



## Advancing qPCR Together

The CFX Connect Real-Time PCR System provides excellent thermal and optical performance with powerful, easy-to-use software for all your SYBR® Green/EvaGreen® and duplex experiments.

The CFX Connect Real-Time PCR System offers:

- **Easy startup** — obtain great results right away with factory-calibrated dyes, quick setup, and intuitive software
- **Effortless optimization** — save time and reduce costs by optimizing assays in a single run using the thermal gradient
- **Powerful data analysis tools** — quickly and accurately validate and analyze data with the advanced analysis modules of CFX Maestro Software

Visit [bio-rad.com/CFXConnect](http://bio-rad.com/CFXConnect) for more information.



### Simplicity through Innovation

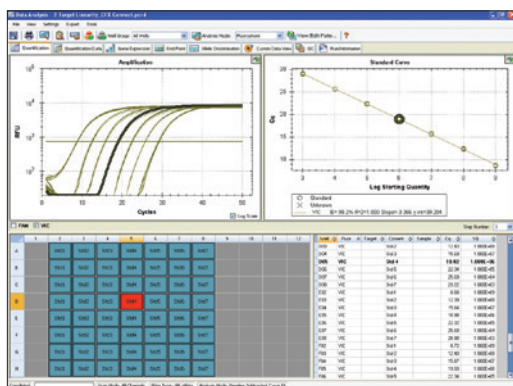
The CFX Connect Real-Time PCR System offers two-target analysis with the same reliable performance as the CFX96 Touch Real-Time PCR System. The system incorporates innovative optical technologies with long-lasting LEDs and solid-state components to provide maximal reliability and flexibility.

- Scanning optics read each well individually with high sensitivity and no cross talk to deliver optimal quantitative results
- Multiple data acquisition modes, including a fast scan option for EvaGreen® or SYBR® Green I users, let a run be tailored to suit the application
- Ability to independently run up to 4 instruments from 1 computer increases throughput and flexibility

### Software Solutions

CFX Maestro Software offers tools that simplify real-time PCR for every researcher. Quickly start experiments by following the intuitive experiment setup. Enter or edit well information before, during, or after a run. Perform data analysis when and where you want by receiving an email with an attached data file after a run is completed. The comprehensive data analysis tools take the guesswork out of analyzing results for any real-time PCR application.

- CFX Maestro Software lets you perform gene expression analysis using multiple reference genes and individual reaction efficiencies
- Precision Melt Analysis Software accurately identifies sample genotypes based on their thermal denaturation properties
- Data can be imported into qbase+ Software for access to wizard-guided statistical analysis, advanced copy number variation analysis, and global mean normalization methods



CFX Maestro Software data analysis module.

### Ordering Information

Catalog #	Description
<b>Instruments</b>	
1855200	<b>CFX Connect Real-Time PCR System with Starter Package</b> , includes CFX Connect Thermal Cycler Chassis, CFX Connect Optical Reaction Module, CFX Maestro Software, license for qbase+ Software, communication cable, reagents, consumables
1855201	<b>CFX Connect Real-Time PCR System</b> , includes CFX Connect Thermal Cycler Chassis, CFX Connect Optical Reaction Module, communication cable
1814000	<b>PX1 PCR Plate Sealer</b> , heat sealing instrument
1845075	<b>CFX Automation System II</b> , includes plate handler and barcode scanner, mounting plate, automation software
<b>Software</b>	
All software for Windows unless otherwise noted.	
12013758	<b>CFX Maestro Software 2.0</b>
12004128	<b>CFX Maestro Software for Mac</b>
12012832	<b>CFX Maestro Software 2.0, Security Edition</b> , 1 license
12013028	<b>CFX Maestro Software 2.0, Security Edition</b> , 5 licenses
12012834	<b>CFX Maestro Software 2.0, Chinese Edition</b>
12012833	<b>CFX Maestro Software 2.0, Russian Edition</b>
1845025	<b>Precision Melt Analysis Software</b> , includes 2 user licenses, data analysis software, 2 HASP HL keys, calibration kit
<b>Reagents</b>	
1708841	<b>iScript Reverse Transcription Supermix</b> , 400 µl (4 x 100 µl vials), 100 x 20 µl reactions
1725035	<b>iScript gDNA Clear cDNA Synthesis Kit</b> , 100 x 20 µl reactions
1725038	<b>iScript Advanced cDNA Synthesis Kit</b> , 100 x 20 µl reactions
1708891	<b>iScript cDNA Synthesis Kit</b> , 100 x 20 µl reactions
1725271	<b>SsoAdvanced Universal SYBR® Green Supermix</b> , 5 ml (5 x 1 ml vials), 500 x 20 µl reactions
1725281	<b>SsoAdvanced Universal Probes Supermix</b> , 5 ml (5 x 1 ml vials), 500 x 20 µl reactions
1725160	<b>SsoAdvanced PreAmp Supermix</b> , 1.25 ml (1 x 1.25 ml vial), 50 x 50 µl reactions
12010220	<b>Reliance One-Step Multiplex RT-qPCR Supermix</b> , 5 ml (5 x 1 ml vials), 1,000 x 20 µl reactions
12010221	<b>Reliance One-Step Multiplex RT-qPCR Supermix</b> , 10 ml (2 x 5 ml vials), 2,000 x 20 µl reactions
1725120	<b>iTaq Universal SYBR® Green Supermix</b> , 2 ml (2 x 1 ml vials), 200 x 20 µl reactions
1725151	<b>iTaq Universal SYBR® Green One-Step Kit</b> , 500 x 20 µl reactions
1725130	<b>iTaq Universal Probes Supermix</b> , 2 ml (2 x 1 ml vials), 200 x 20 µl reactions
1725141	<b>iTaq Universal Probes One-Step Kit</b> , 500 x 20 µl reactions
<b>Consumables</b>	
HSP3805	<b>Hard-Shell 384-Well Skirted PCR Plates</b> , clear shell/white well for higher fluorescent signals, 50
MSB1001	<b>Microseal 'B' Adhesive Seals</b> , optically clear, 100
MSF1001	<b>Microseal 'F' PCR Plate Seals</b> , foil, pierceable, 100

BIO-RAD, HARD-SHELL, and MICROSEAL are trademarks of Bio-Rad Laboratories, Inc. in certain jurisdictions. Hard-Shell Plates are covered by one or more of the following U.S. patents or their foreign counterparts owned by Eppendorf AG: U.S. Patent Numbers 7,347,977; 6,340,589; and 6,528,302. SYBR is a trademark of Thermo Fisher Scientific Inc. Bio-Rad Laboratories, Inc. is licensed by Thermo Fisher Scientific Inc. to sell reagents containing SYBR Green I for use in real-time PCR, for research purposes only. EvaGreen is a trademark of Biotium, Inc. All trademarks used herein are the property of their respective owner.



Bio-Rad PCR reagents and analytical instruments are manufactured under an ISO 13485:2016 certified Quality Management System and are quality control tested to ensure consistent product performance you can trust.



**Bio-Rad Laboratories, Inc.**

Life Science Group

Website bio-rad.com **USA** 1 800 424 6723 **Australia** 61 2 9914 2800 **Austria** 00 800 00 24 67 23 **Belgium** 00 800 00 24 67 23 **Brazil** 4003 0399 **Canada** 1 905 364 3435 **China** 86 21 6169 8500 **Czech Republic** 00 800 00 24 67 23 **Denmark** 00 800 00 24 67 23 **Finland** 00 800 00 24 67 23 **France** 00 800 00 24 67 23 **Germany** 00 800 00 24 67 23 **Hong Kong** 852 2789 3300 **Hungary** 00 800 00 24 67 23 **India** 91 124 4029300 **Israel** 0 3 9636050 **Italy** 00 800 00 24 67 23 **Japan** 81 3 6361 7000 **Korea** 82 2 3473 4460 **Luxembourg** 00 800 00 24 67 23 **Mexico** 52 555 488 7670 **The Netherlands** 00 800 00 24 67 23 **New Zealand** 64 9 415 2280 **Norway** 00 800 00 24 67 23 **Poland** 00 800 00 24 67 23 **Portugal** 00 800 00 24 67 23 **Russian Federation** 00 800 00 24 67 23 **Singapore** 65 6415 3188 **South Africa** 00 800 00 24 67 23 **Spain** 00 800 00 24 67 23 **Sweden** 00 800 00 24 67 23 **Switzerland** 00 800 00 24 67 23 **Taiwan** 886 2 2578 7189 **Thailand** 66 2 651 8311 **United Arab Emirates** 36 1 459 6150 **United Kingdom** 00 800 00 24 67 23

