

T100 Firmware Update Instructions

Overview

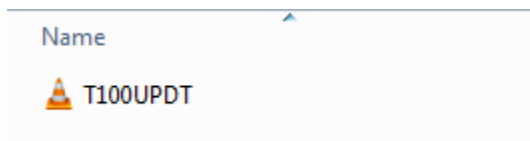
This document contains instructions for updating the user accessible firmware installation on the T100 Thermal Cycler. Firmware, corresponding file name, and the most current version are presented in the table below:

Firmware	File Name	Current Version
Main firmware	T100UPDT.bin	1.201

Firmware upgrade is performed by inserting a USB flash drive with the appropriate file loaded in the root directory into the front USB port on the T100 Thermal Cycler. For any questions or problems you may encounter, please contact Bio-Rad Laboratories. For technical support in the United States and Canada, call 1-800-424-6723 (toll-free) and select the technical support option. For technical support outside North America, contact your local Bio-Rad Laboratories office.

Procedures

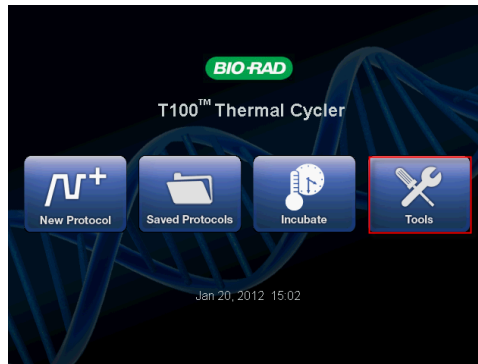
- 1) Obtain the most recent firmware from the **Download** tab on the [Bio-Rad T100 Thermal Cycler product page](#) or contacting your local Bio-Rad technical support
- 2) Unzip T100_Version_1.201
- 3) Copy the firmware file, T100UPDT.bin, to the root directory of a USB flash drive. Ensure there are no older versions of the firmware files on the flash drive. When copied correctly, the USB flash drive will list the file as shown in the figure below



NOTE: Ensure the firmware file is copied to the root directory of the USB flash drive and not to a folder on the flash drive. The file name must match exactly as shown in the figure above for the firmware update to complete successfully.

- 4) Turn on the T100 Thermal Cycler if it's not already on
- 5) Insert the USB flash drive into the front USB port on the instrument
- 6) Touch the **Tools** button

T100 Firmware Update Instructions



- 7) Touch the **Update Firmware** button. Then touch **Start** to begin. The instrument will reboot to finish the firmware update process

NOTE: DO NOT turn off the instrument or remove the USB flash drive during this process. This process may take approximately 5 minutes to complete.

- 8) View the installed firmware version by touching **Tools** > **About** to verify that the firmware version 1.201 has been installed