

# **Bio-Rad CFX Manager on 64-Bit PC**

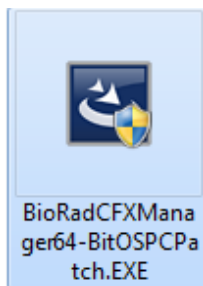
## **Driver Installation for 64-Bit OS PC**

### **Installation Steps:**

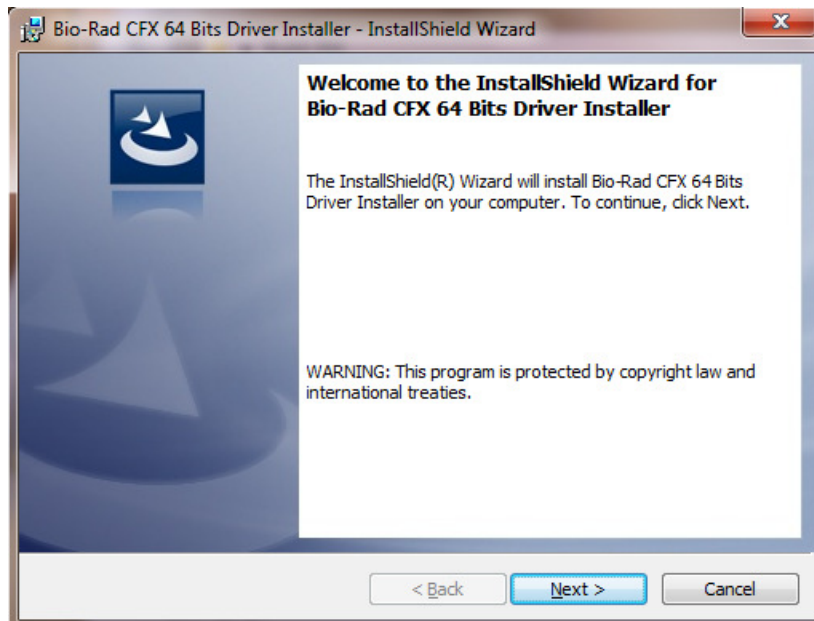
**1) Make sure the Bio-Rad CFX Manager is already installed on the 64-Bit Operating System PC.**

**Do not connect any instrument at this stage.**

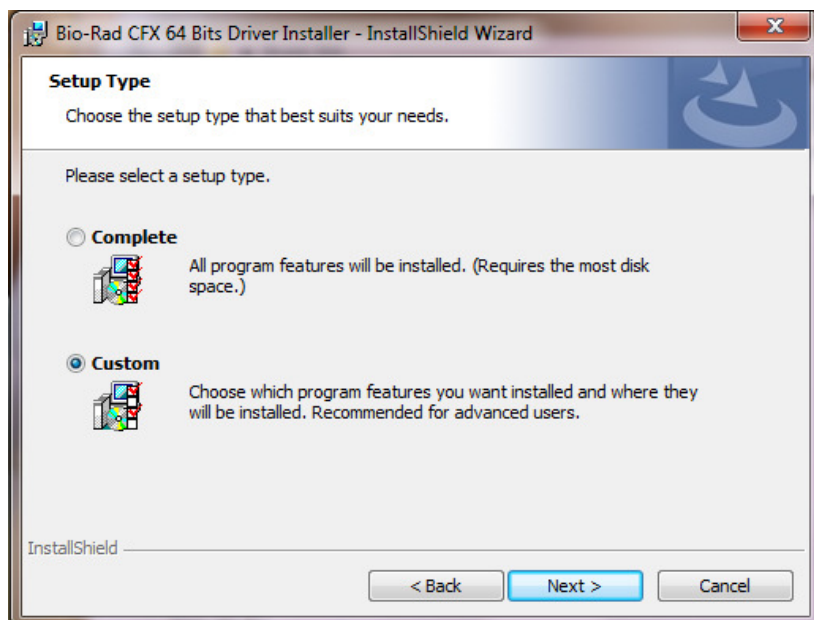
**2) Right-click on Bio-Rad CFX Manager 64-Bit Operating System Driver Patch and select "Run as Administrator"**



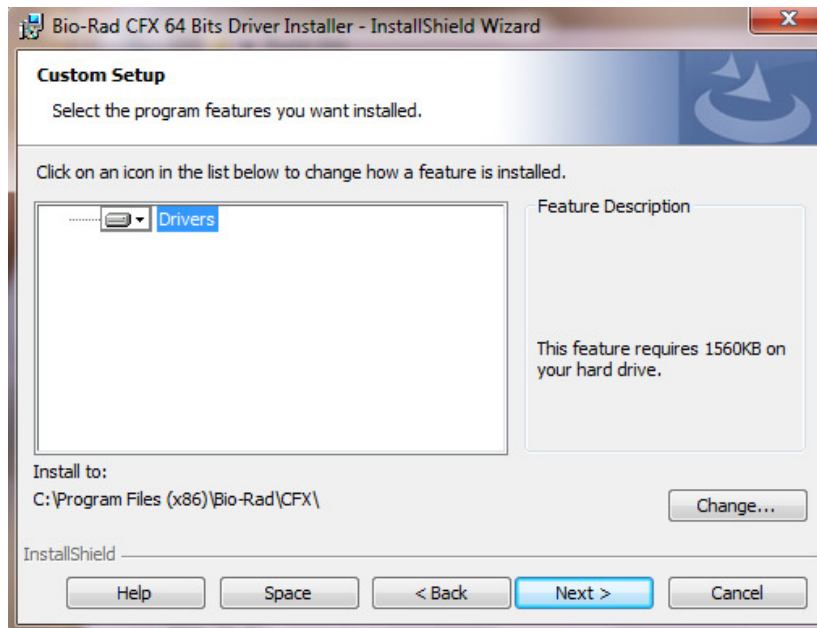
**3) Click Next to Start the install**



#### 4 Select Custom, then click Next



#### 5) Customize the path if needed



**If CFX 1.6 is installed under the default path:**

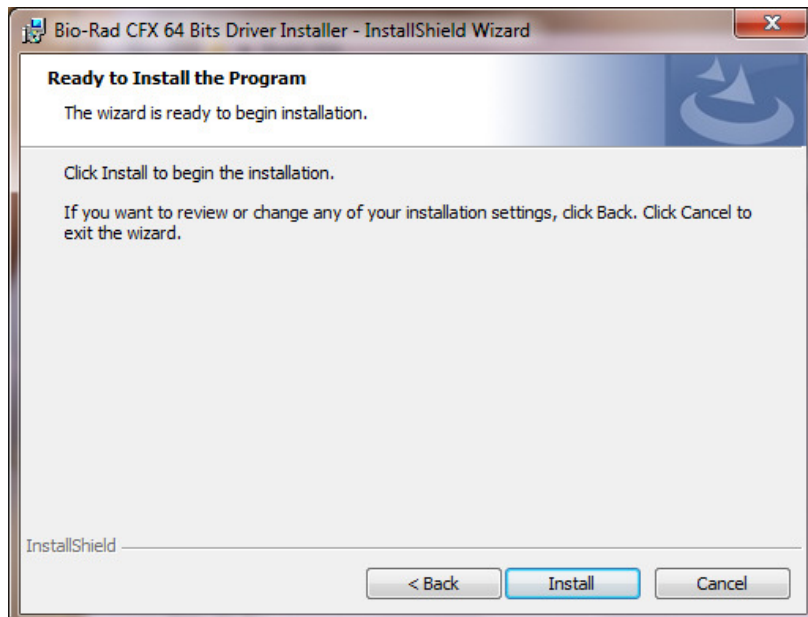
c:\Program Files (x86)\Bio-Rad\CFX\

**Click Next**

**If CFX 1.6 was installed in a non default location:**

**Click Change to provide the correct CFX 1.6 \CFX\ installation path, then click OK**

**6) Click Install**



**A new window showing the 64-Bit driver installation will be displayed**

```
C:\Windows\system32\cmd.exe
LOG ok: 0, C:\Program Files (x86)\Bio-Rad\CFX\Drivers\BaseUnit64\C1000_ThermalCy
cler.inf is preinstalled.
LOG ok: 1, RETURN: DriverPackagePreinstallW (0xB7)
LOG ok: 1, RETURN: DriverPackagePreinstallA (0xB7)
difx_install_preinstall_inf: err b7, last event 0, last error 0. ERROR_ALREADY_
EXISTS

Processing HWID USB\VID_0614&PID_03FB
Installing a non-signed driver package for USB\VID_0614&PID_03FB
Device node (hwnd:USB\VID_0614&PID_03FB): does not exist and is not configured.
Pre-installing.

Processing HWID USB\VID_4079&PID_0221
Installing a non-signed driver package for USB\VID_4079&PID_0221
Device node (hwnd:USB\VID_4079&PID_0221): does not exist and is not configured.
Pre-installing.

Processing HWID USB\VID_4079&PID_0222
Installing a non-signed driver package for USB\VID_4079&PID_0222
Device node (hwnd:USB\VID_4079&PID_0222): does not exist and is not configured.
Pre-installing.
install: completed successfully

C:\Program Files (x86)\Bio-Rad\CFX\Drivers\BaseUnit64>pause
Press any key to continue . . .
```

**7) Once finished the cmd.EXE window should say "Install: completed successfully"**  
**Press any key to continue...**

**The new 64-Bit driver is now installed and the instrument can be connected to the PC.**

**CFX Manager can now be used with the instrument.**