

PROTEIN PURIFICATION **Bio-Scale™ Mini Cartridges**

- Convenient, prepacked, and disposable design
- Easy connection to liquid chromatography systems using luer lock fittings
- Innovative cartridge design for run-to-run reproducibility
- Wide range of available chromatography media



Convenient, Reliable, and Ready to Use

Chromatography System Compatibility

Bio-Scale Mini cartridges conveniently run a wide variety of chromatography media in the Profinia™ protein purification system, the BioLogic™ LP and BioLogic DuoFlow™ systems, a peristaltic pump, and other chromatography systems. For simple step elution, the cartridges can be used with a luer lock syringe. Fittings are available for connection to HPLC- and FPLC-type chromatography systems.

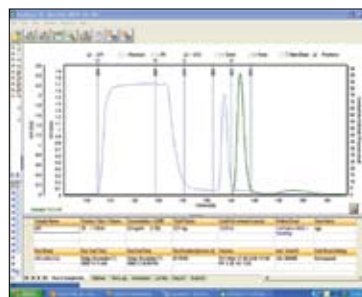
Innovative and Robust Design

Bio-Scale Mini cartridges have a double-wall cartridge design that provides extra durability and allows easy, reliable runs at pressures up to 45 psi and with aqueous buffers most commonly used for protein separation. These new cartridges are robust and constructed of chemically compatible polypropylene. The cartridge design and packing process are a unique patented* Bio-Rad design.

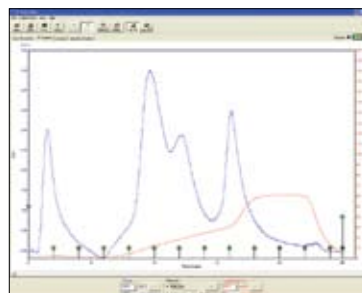
Media Variety and Cartridge Size

The cartridges are prepacked with Bio-Rad's chromatography media for ion exchange, affinity, and size exclusion chromatography. The cartridges come in 1 and 5 ml formats that can be used for method scouting or simple purifications. Larger 10 and 50 ml desalting cartridges are also available. Bio-Scale Mini cartridges are convenient, disposable, and ready to use.

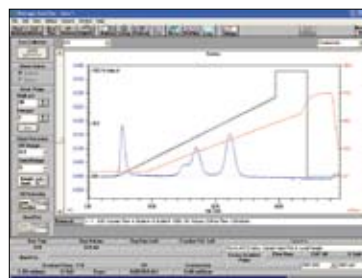
* U.S. patent 7,208,087 B2.



Chromatogram from the Profinia protein purification system using a Bio-Scale™ Mini Profinity™ IMAC cartridge.



Chromatogram from the BioLogic LP system using a Bio-Scale™ Mini Macro-Prep® High Q cartridge.



Chromatogram from the BioLogic DuoFlow system using a Bio-Scale Mini Macro-Prep High S cartridge.



Bio-Scale Mini Cartridges

Prepacked Cartridge Selection

Cartridge by Application	Support	Type of Separation	Chemical Form	Protein Capacity/ml*	Catalog Numbers by Cartridge Size				
					5 x 1 ml	1 x 5 ml	5 x 5 ml		
Protein and Plasmid Purification									
High Q	Macro-Prep High Q	Strong anion exchange	-N ⁺ (CH ₃) ₃	≥37 mg BSA	732-4120	732-4122	732-4124		
UNOsphere™ Q	UNOsphere Q	Strong anion exchange	-N ⁺ (CH ₃) ₃	180 mg BSA	732-4100	732-4102	732-4104		
UNOsphere S	UNOsphere S	Strong cation exchange	-SO ₃ ⁻	60 mg human IgG	732-4110	732-4112	732-4114		
DEAE	Macro-Prep DEAE	Weak anion exchange	-HN ⁺ (C ₂ H ₅) ₂	>35 mg protein	732-4140	732-4142	732-4144		
Protein Purification									
High S	Macro-Prep High S	Strong cation exchange	-SO ₃ ⁻	≥49 mg human IgG	732-4130	732-4132	732-4134		
IgG Purification									
DEAE Blue	DEAE	Affinity Affi-Gel® Blue	Cibacron Blue	0.2–1.0 ml serum F3GA and DEAE	—	732-4632	732-4634		
Antibody Purification									
Protein A	Affi-Prep® protein A	Affinity	Protein A	8–10 mg mouse monoclonal IgG ₁ 16–23 mg human IgG	732-4600	732-4602	—		
CHT™ Type I	CHT ceramic Hydroxyapatite Type I, 40 μm	Hydroxyapatite	(Ca ₅ (PO ₄) ₃ OH) ₂	25–60 mg human IgG	—	732-4322	732-4324		
CHT Type II	CHT ceramic Hydroxyapatite Type II, 40 μm	Hydroxyapatite	(Ca ₅ (PO ₄) ₃ OH) ₂	15–25 mg human IgG	—	732-4332	732-4334		
Affinity-Tagged Protein Purification									
IMAC	Profinity IMAC	Affinity	Iminodiacetic acid	≥15 mg recombinant histidine (His)-tagged protein	732-4610	732-4612	732-4614		
GST	Profinity GST	Affinity	Glutathione	≥7 mg/ml recombinant GST-tagged protein	732-4620	732-4622	732-4624		
Purification of Serum Proteins, Enzymes									
Blue	Affi-Gel Blue	Affinity	Cibacron Blue F3GA	0.2 ml serum 11 mg albumin	—	732-4642	732-4644		
Cartridge by Application	Support	Type of Separation	Chemical Form	Protein Capacity/ml*	Catalog Numbers by Cartridge Size				
					1 x 5 ml	5 x 5 ml	5 x 10 ml	1 x 50 ml	5 x 50 ml
Desalting, Buffer Exchange									
P-6	Bio-Gel® P-6	Gel filtration	Polyacrylamide	10–22% CV**	732-4502	732-4504	732-5304	732-5312	732-5314

* Purification capacity based on bulk support; check individual instruction manuals for run conditions and specifications.

** Column volume.

Specifications

Sizes (bed volumes)	1 ml, 5 ml, 10 ml, and 50 ml
Maximum operating pressure	1, 5, and 10 ml: 45 psi 50 ml: 40 psi
Recommended flow rate	Varies for each support type*
Fittings	Female luer inlet and male luer outlet
Column material	Polypropylene
Frit material	Polyethylene (HDPE)
Dimensions (L x ID)**	1 ml — 40 mm x 5.6 mm 5 ml — 40 mm x 12.6 mm 10 ml — 80 mm x 12.6 mm*** 50 ml — 80 mm x 28.2 mm***

* Recommended flow rates are given for each support type in the instruction manual.

** L, length; ID, inner diameter.

*** Available for desalting cartridges only.



For current information on prepacked cartridges, visit www.bio-rad.com/cartridges/

Cibacron is a trademark of Ciba-Geigy Corporation.

Purification and preparation of fusion proteins and affinity peptides containing at least two adjacent histidine residues may require a license under U.S. patent 5,284,933 and U.S. patent 5,310,663, including foreign patents (assignee: Hoffmann-La Roche).

Expression and purification of GST fusion proteins may require a license under U.S. patent 5,654,176 (assignee: Chemicon International).



**Bio-Rad
Laboratories, Inc.**

Life Science
Group

Web site www.bio-rad.com USA 800 4BIORAD Australia 61 02 9914 2800 Austria 01 877 89 01 Belgium 09 385 55 11 Brazil 55 21 3237 9400
Canada 905 712 2771 China 86 21 6426 0808 Czech Republic 420 241 430 532 Denmark 44 52 10 00 Finland 09 804 22 00 France 01 47 95 69 65
Germany 089 318 84 0 Greece 30 210 777 4396 Hong Kong 852 2789 3300 Hungary 36 1 455 8800 India 91 124 4029300 Israel 03 963 6050
Italy 39 02 216091 Japan 03 5811 6270 Korea 82 2 3473 4460 Mexico 52 555 488 7670 The Netherlands 0318 540666 New Zealand 0508 805 500
Norway 23 38 41 30 Poland 48 22 331 99 99 Portugal 351 21 472 7700 Russia 7 495 721 14 04 Singapore 65 6415 3188 South Africa 27 861 246 723
Spain 34 91 590 5200 Sweden 08 555 12700 Switzerland 061 717 95 55 Taiwan 886 2 2578 7189 United Kingdom 020 8328 2000