

NGC Chromatography Systems for Protein Purification

The New Standard in Automation and Reliability for Drug Discovery and Development

BIO-RAD

INTEGRATING FLEXIBILITY AND SCALABILITY

From **small-scale purification projects** supporting

- downstream assays in target identification and validation
- lead discovery and optimization
- preclinical research

...to **process development / early scale-up initiatives** supporting

- clinical research
- manufacturing operations
- quality control (QC) procedures

Reliable
Flexible
Secure
Robust
Scalable
Automated
Innovative

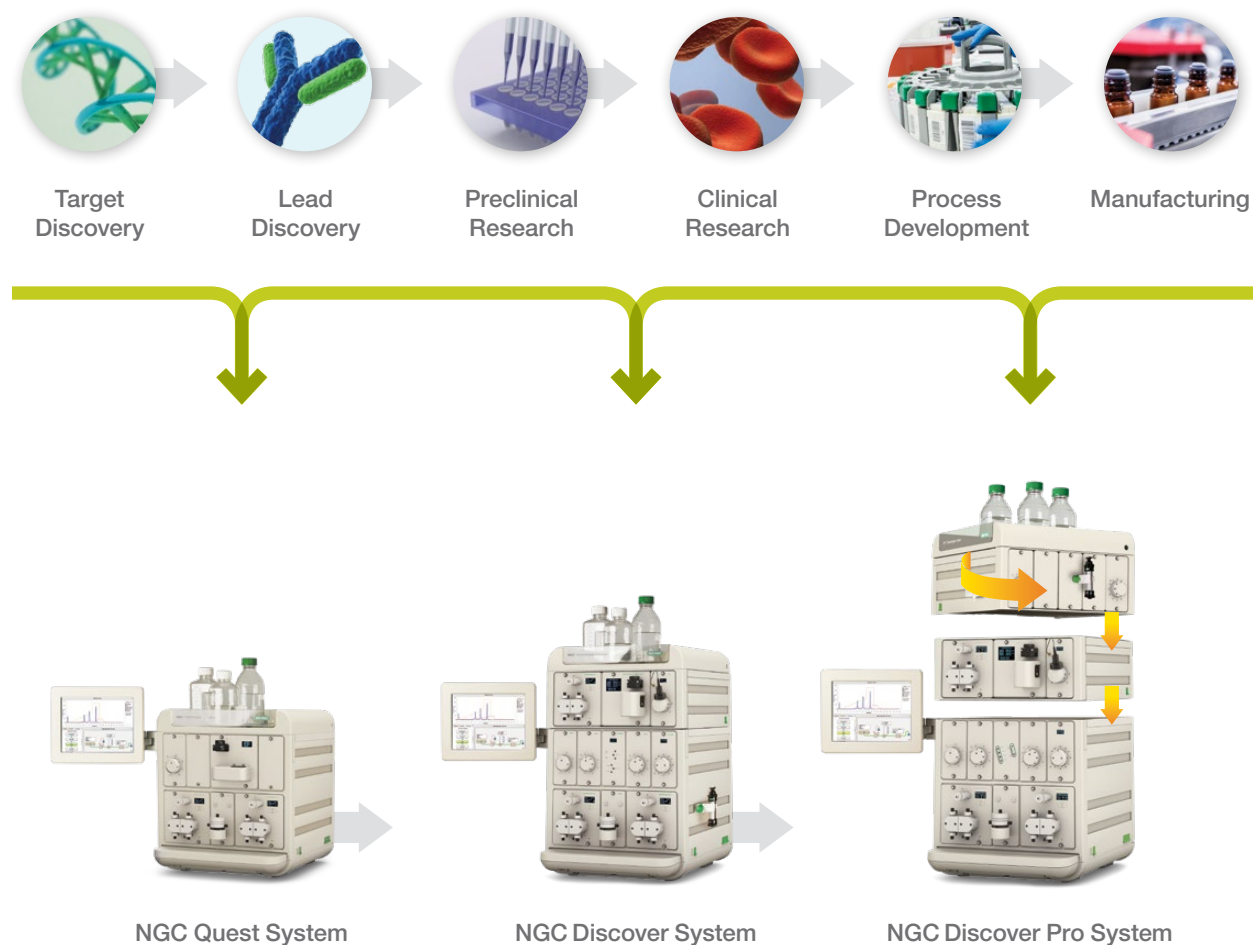


NGC Chromatography System
with NGC Fraction Collector*

* Optional on all systems.

PROVIDING COMPLETE SUPPORT

Designed to Support Protein Purification across All Stages of Drug Discovery and Development



All systems work with industry-leading Bio-Rad columns and resins.

Downstream Assays

Structure

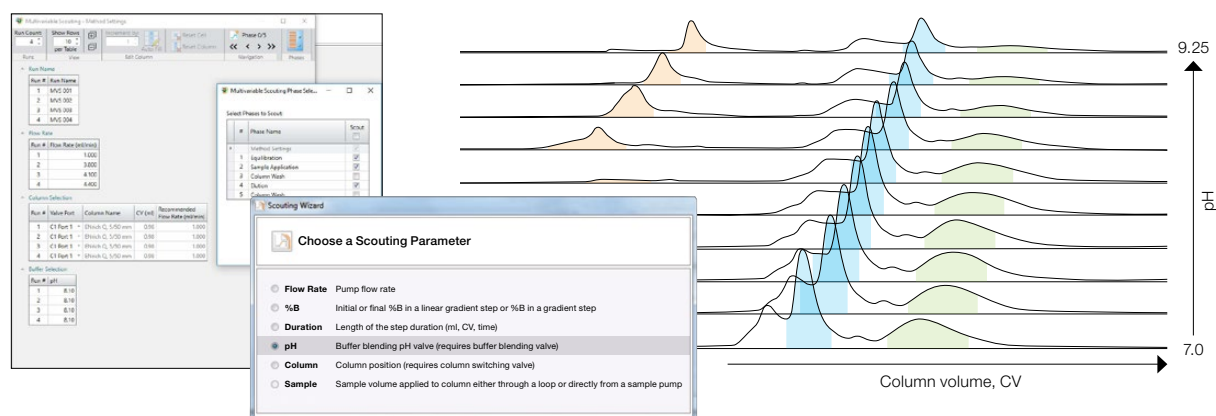
Function

Activity

ACCELERATING TIME TO RESULTS

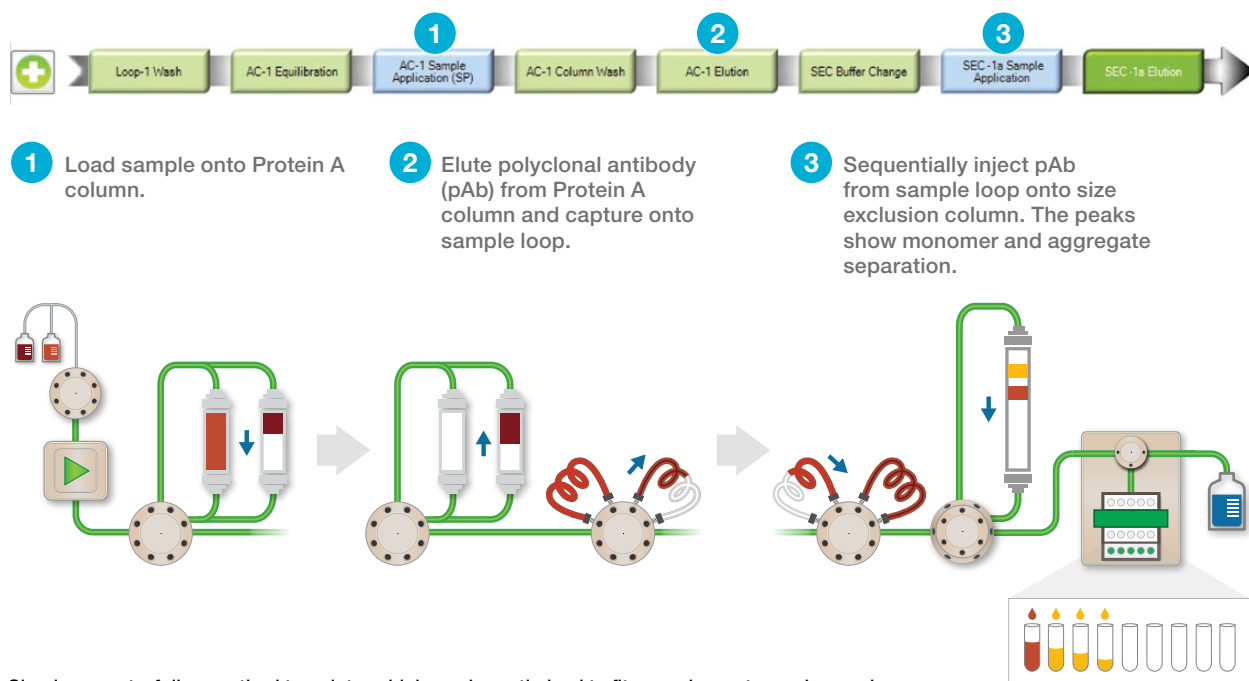
Faster Method Optimization Using Automation When Scouting

Optimal purification conditions can be determined in an automated manner using scouting features. Focus on one parameter at a time with the Scouting Wizard or evaluate multiple conditions using the Multivariable Scouting (MVS) feature. MVS simplifies the evaluation of multiple conditions provided by design of experiment statistical software. The buffer blending valve automates optimal buffer formation to further accelerate your method development process.



Improved Efficiency and Reproducibility in Multidimensional (Multi-D) Purifications

Multi-D purification templates offer optimal efficiency for the tandem or sequential purification of multiple samples. Orthogonal techniques, such as affinity followed by size exclusion chromatography (SEC), provide unattended two-step processing without the risk of sample loss or operator error.



Simple, easy-to-follow method template, which can be optimized to fit your chromatography needs.

To learn more about Multi-D purifications, read the [application note \(bulletin 6725\)](#) and [watch the webinar](#).

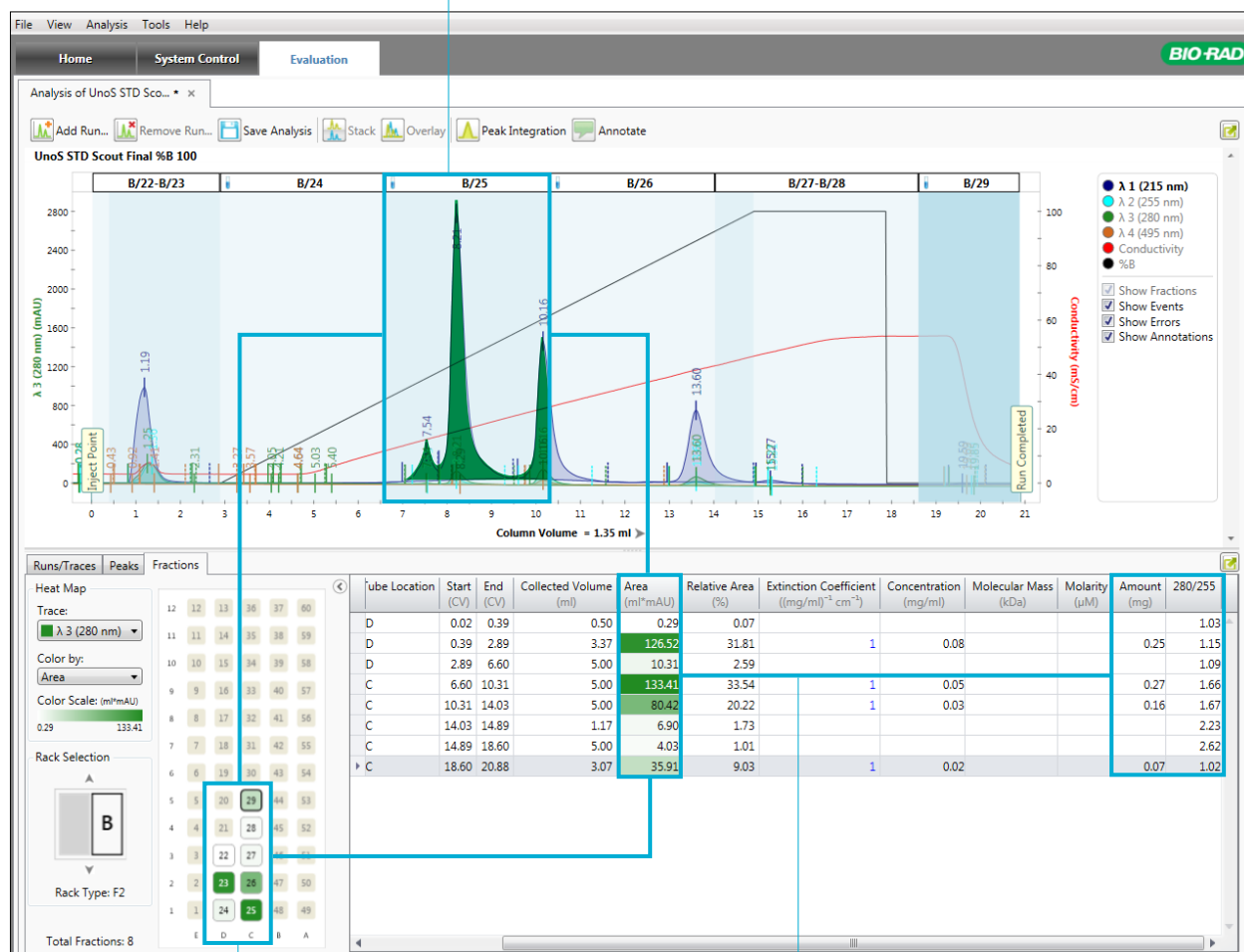
STREAMLINING DATA ANALYSIS

Unique ChromLab Software Tools for Faster Analysis

Data analysis has traditionally been viewed as a bottleneck, being both complicated and time-consuming. ChromLab Software streamlines data processing by providing one-click peak detection and integration, rapid creation of trace comparisons between multiple chromatograms, and customizable chromatogram layouts with a variety of viewing and data analysis options.

What Sets Us Apart

- 1 Single-click chromatogram overlay and peak integration allow for effortless analysis and comparison of multiple run files.*



- 2 Fraction heat maps highlight fractions containing proteins of interest, allowing researchers to confidently pool fractions.
- 3 Instant data analysis and tabulation display protein concentration and purity of each fraction.

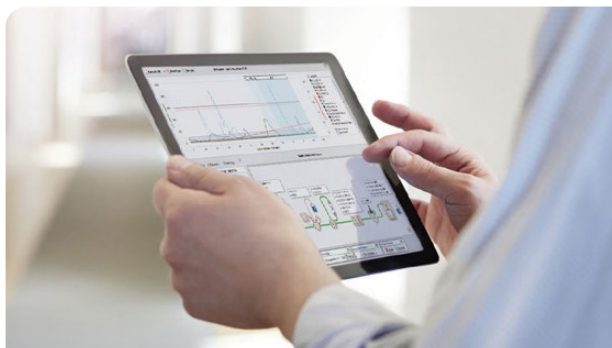
* To ensure continuity, researchers can use ChromLab Software to import UNICORN 5 and 6 result files for analysis.

ENSURING CONSISTENCY, ROBUSTNESS, AND RELIABILITY

Our Innovative Solution

Pharma and biotech customer-centric product development delivers ideal solutions that address your needs.

- Remote monitoring and control from any networked device for flexibility and peace of mind
- Email notifications upon run completion or mid-run if something unexpected occurs
- Real-time monitoring of active fluidics path with Point-to-Plumb LEDs, system touch screen, and ChromLab Software
- Centralized database with different levels of user access for increased traceability and security
- Multi-instrument control from a single computer



Stringent Standards for IT and Regulatory Requirements

- Security compliance
- U.S. FDA 21 CFR Part 11 compliance
- Installation qualification/operational qualification (IQ/OQ)
- Microsoft SQL database
- User, group, and NGC System management

Rigorous Testing during Development

The entire fluid path in the NGC Systems is constructed with PEEK Tubing, the gold standard for chromatography applications due to its robustness, biocompatibility, and chemical inertness. The system will remain corrosion- and contamination-free with routine cleaning and maintenance.

Every NGC Chromatography System is built in our ISO 13485–accredited manufacturing facility and undergoes 9 hours of QC testing before being carefully packed and shipped.



50,000

VALVE ACTUATIONS

With no peak broadening or pressure fluctuations.



3,000,000

CONTINUAL CYCLES

Reproducibly formulating buffers under the most rigorous conditions over and over again.



10,000,000

PISTON STROKES

Equivalent to running continually 8 hours a day, 5 days a week, for 9 months.

Ordering Information

Discovery

NGC Quest Chromatography Systems

For the all-purpose purification of biomolecules:

7880001	NGC Quest 10 System
7880003	NGC Quest 10 Plus System
7880002	NGC Quest 100 System
7880004	NGC Quest 100 Plus System

NGC Scout Chromatography Systems

For rapid scouting of proteins, peptides, and nucleic acids:

7880005	NGC Scout 10 System
7880007	NGC Scout 10 Plus System
7880006	NGC Scout 100 System
7880008	NGC Scout 100 Plus System

Visit bio-rad.com/resin to view our lab-scale resins and bio-rad.com/column to view our lab-scale columns.

Development and Scale-Up

NGC Discover Chromatography Systems

For method development:

7880009	NGC Discover 10 System
7880011	NGC Discover 10 Pro System
7880010	NGC Discover 100 System
7880012	NGC Discover 100 Pro System

Visit bio-rad.com/process to view our process- and manufacturing-scale resins.

CONFIGURE YOUR NGC SYSTEM
at bio-rad.com/DesignYourNGC

NGC System Modules and Accessories

System Pumps

7884002	NGC F10 Pump Module , pkg of 1, includes 10 ml/min system pump kit with necessary tubing and fittings, for creating buffer gradients; for use with the buffer blending valve to generate flow rates of up to 20 ml/min
7884003	NGC F100 Pump Module , pkg of 1, includes 100 ml/min system pump kit with necessary tubing and fittings, for creating buffer gradients; for use with the buffer blending valve to generate flow rates of up to 200 ml/min

Sample Pump

7884004	NGC Sample Pump Module , pkg of 1, includes 100 ml/min sample pump kit with necessary tubing and fittings, for automated large-volume sample application via sample inject valve
---------	---

Detectors

7884008	NGC Single-Wavelength Detector Module , pkg of 1, includes UV/conductivity detector kit with necessary tubing and fittings, for nucleotide and protein detection, salt gradient generation
7884009	NGC Multi-Wavelength Detector Module , pkg of 1, includes UV/Vis and conductivity detector kit with necessary tubing and fittings, for simultaneous 4-wavelength monitoring of elution fractions between 190 and 800 nm and salt gradient generation
7885022	NGC UV Flow Cell (2 mm) , preparative
7885023	NGC UV Flow Cell (10 mm) , analytical
7885024	NGC UV Flow Cell (5 mm) , included with all 10 ml/min and 100 ml/min systems

Valves

7884010	NGC Buffer Blending Valve Module , pkg of 1, kit includes necessary tubing and fittings for inline buffer preparation and generating pH gradients for quick pH scouting
7884006	NGC Inlet Valve Module , pkg of 1, kit includes necessary tubing and fittings for automated switching between multiple buffers and samples during method development
7884012	NGC Column Switching Valve Module (10 ml) , kit includes the necessary tubing and fittings to accommodate the most common column types, holds 5 columns; for use with F10 systems for quick column scouting and reverse flow applications

7884026	NGC Column Switching Valve Module (100 ml) , kit includes the necessary tubing and fittings to accommodate the most common column types, holds 5 columns; for use with F100 systems for quick column scouting and reverse flow applications
7884013	NGC Outlet Valve Module , pkg of 1, kit includes necessary tubing and fittings for automated fraction collection of large-volume fractions with up to 12 vessels
7884011	NGC pH Valve Module , pkg of 1, kit includes the pH valve kit, pH probe, tubing, and fittings, for accurate inline pH measurement
7884016	NGC Signal Import Module , pkg of 1, enables analog to digital signal conversion and connection to third-party autosamplers and detectors

Air Sensors

7885017	NGC Air Sensor Module , pkg of 1, kit includes 2 large-bore air sensors for detection of end of buffer and sample to protect against air entering pumps and columns; supports up to 4 large- and small-bore air sensors
7885018	NGC Air Sensor Extension Module , pkg of 1, connects to the base air sensor module to support 4 additional air sensors; does not include any air sensors, optional part
7885020	NGC Small Air Sensor , pkg of 1, includes air sensor to detect air in small-diameter PEEK Tubing
7885021	NGC Large Air Sensor , pkg of 1, includes air sensor to detect air in large-diameter PTFE tubing
7885019	NGC Air Sensor Extension Cable , pkg of 1, for placement of air sensors outside air sensor module

Fraction Collectors

17002070	NGC Fraction Collector , 100/240 V, fraction collector compatible with all NGC Systems, includes power cord, rack set (two 13 mm tube racks), tubing, union
7410002	BioFrac Fraction Collector , 100/240 V, fraction collector compatible with all NGC Systems, includes power cord, rack set F1 (2 x flatpack, 13 mm), BioFrac Diverter Valve, fittings kit

Bio-Rad is a trademark of Bio-Rad Laboratories, Inc. in certain jurisdictions.

All trademarks used herein are the property of their respective owner.

DESIGNED BY YOU BUILT BY BIO-RAD

BIO-RAD



Available on the
App Store



Download the NGC System Tour on the App Store
and use this augmented reality (AR) target to visualize the
NGC System in your lab.

BIO-RAD

**Bio-Rad
Laboratories, Inc.**

Life Science
Group

Web site bio-rad.com **USA** 1 800 424 6723 **Australia** 61 2 9914 2800 **Austria** 43 01 877 89019 **Belgium** 32 03 710 53 00 **Brazil** 55 11 3065 7550
Canada 1 905 364 3435 **China** 86 21 6169 8500 **Czech Republic** 36 01 459 6192 **Denmark** 45 04 452 10 00 **Finland** 35 08 980 422 00
France 33 01 479 593 00 **Germany** 49 089 3188 4393 **Hong Kong** 852 2789 3300 **Hungary** 36 01 459 6190 **India** 91 124 4029300
Israel 972 03 963 6050 **Italy** 39 02 49486600 **Japan** 81 3 6361 7000 **Korea** 82 2 3473 4460 **Mexico** 52 555 488 7670 **The Netherlands** 31 0 318 540 666
New Zealand 64 9 415 2280 **Norway** 47 0 233 841 30 **Poland** 36 01 459 6191 **Portugal** 351 21 4727717 **Russia** 7 495 721 14 04
Singapore 65 6415 3188 **South Africa** 36 01 459 6193 **Spain** 34 091 49 06 580 **Sweden** 46 08 555 127 00 **Switzerland** 41 0617 17 9555
Taiwan 886 2 2578 7189 **Thailand** 66 2 651 8311 **United Arab Emirates** 971 4 8187300 **United Kingdom** 44 01923 47 1301

