

MULTIPLEX ASSAYS

Bio-Plex Manager™ MP

Software Upgrade

Quick Guide

Installing Bio-Plex Manager MP

1 Install xPONENT 4.2 (if not already installed).

1. Use the CD that comes with the system or contact Bio-Rad Technical Support to obtain one.

2 Check your xPONENT license.

1. xPONENT must have the Automation license activated.
2. To verify Automation license activation, open xPONENT (leave user and password blank) and navigate to the Admin screen. Select **Licensing** from the Admin screen as indicated in Figure 1.
3. The Current License Agreements screen should have the indicated options activated (Figure 1). Bio-Plex Manager MP software requires the Automation license to be active (Full License) but will not work with active CFR or Security licenses.

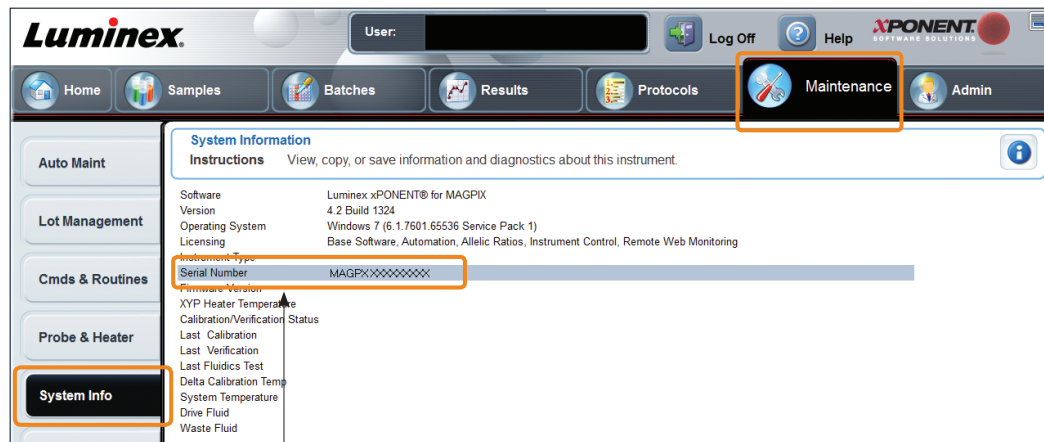
Activation code

Current License Agreements:	Status
Accepted	
Licenses	Status
Base Software	Full License
LIS	Not Licensed
21 CFR Pat 11	Not Licensed
Automation	Full License
Security	Not Licensed
Allelic Ratios	Full License
Instrument Control (SN: MAGPIX00000000)	Not Connected
Remote Web Monitoring	Full License

Fig 1. Current license information on xPONENT software.

3 Obtain correct xPONENT license.

1. Copy and paste the current activation code to a document (or e-mail). See Figure 1 for locating activation code.
2. Obtain your MAGPIX serial number. Navigate to the Maintenance screen and select **System Info** to obtain the serial number (Figure 2).
3. Send the current activation code and serial number to your local Bio-Rad Technical Support (Figure 2).
4. Bio-Rad will send you a new activation code, which will activate the Automation license.



Right click to copy serial number

Fig. 2. Locating xPONENT serial number.

Activate Bio-Plex Manager MP

- 1 Obtain an activation code from the Bio-Plex Manager MP CD holder.
- 2 Insert the Bio-Plex Manager MP software CD and install the software.
- 3 If you are connected to the Internet, simply enter the activation code when prompted (Figure 3).

1. To install the software, Microsoft.NET will need to be active on your operating system. If it is not, it will be automatically installed. You will be required to restart your operating system to complete the installation of the Bio-Plex Manager MP software.

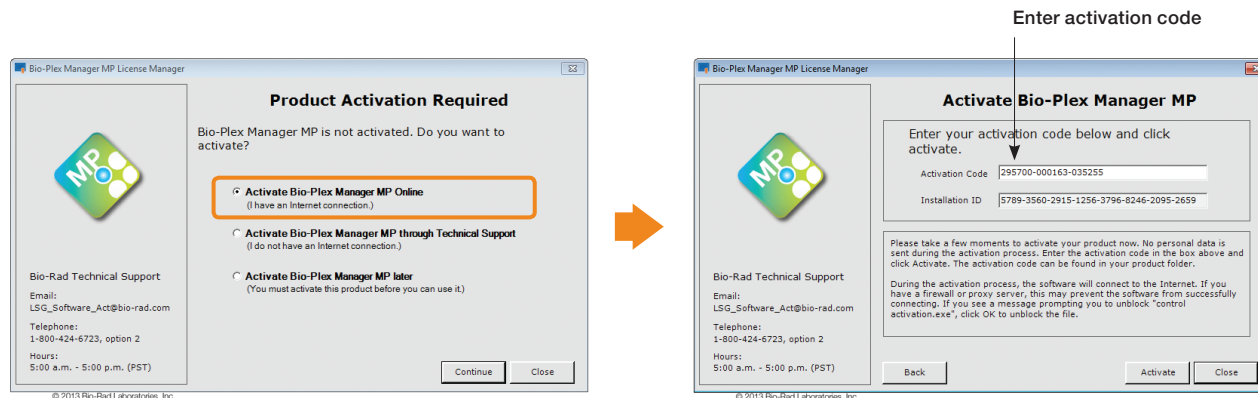


Fig. 3. Activating Bio-Plex Manager MP software via the Internet.

4 If you are not connected to the Internet, follow the instructions for activating through Bio-Rad Technical Support (Figure 4).

1. Choose **Activate Bio-Plex Manager MP through Technical Support**.
2. Choose **Send Credentials to Technical Support** and select **Continue**. Save the credentials.

3. Send saved file to Bio-Rad Technical Support.
4. When you receive the file from Technical Support, start the software again and import the file as shown in Figure 4.

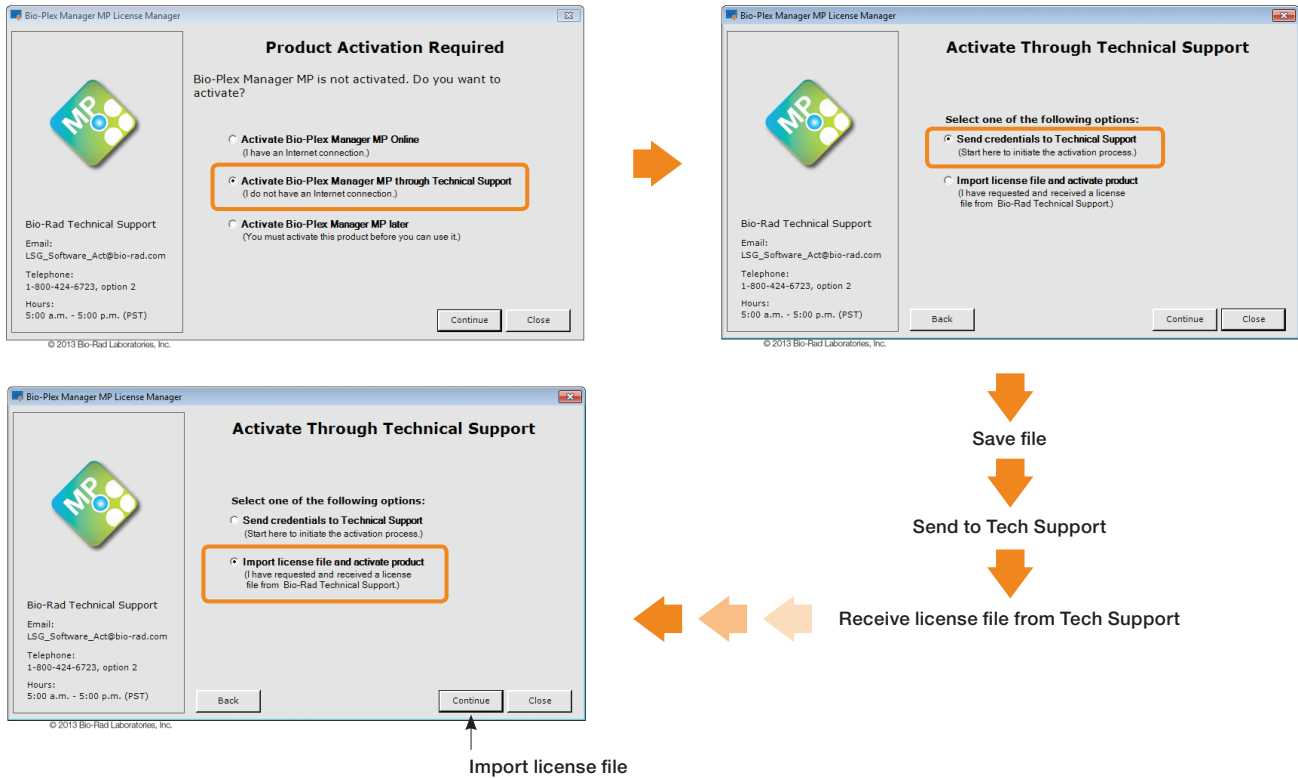


Fig. 4. Activating Bio-Plex Manager MP software through Bio-Rad Technical Support.

Setup Wizard

- 1 On your first use of the software, the Setup MAGPIX Wizard will walk you through setup of the instrument.**

Bio-Plex Manager MP Daily Workflow

1 Run Daily Start Up at the start of each day.

1. Navigate to the Maintenance screen (Figure 5).
2. Choose **Daily Start Up** routine.
3. Follow the Daily Start Up instructions.
4. Click **Start**.

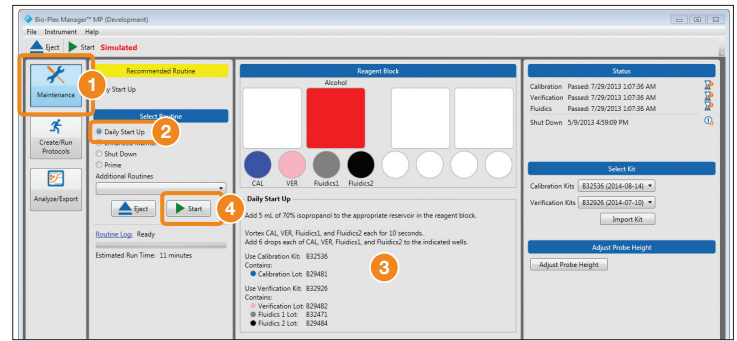


Fig. 5. Daily startup instructions.

2 Create and run your protocols.

1. Navigate to the Create/Run Protocols screen (Figure 6).
2. Click **New** in the toolbar.
3. After clicking **New**, several options are available that allow selection of a new assay panel or management of already existing panels. Select the feature that best suits your needs. Click **OK** when finished.
4. Click **Start** in the toolbar.
5. Save the protocol (optional).

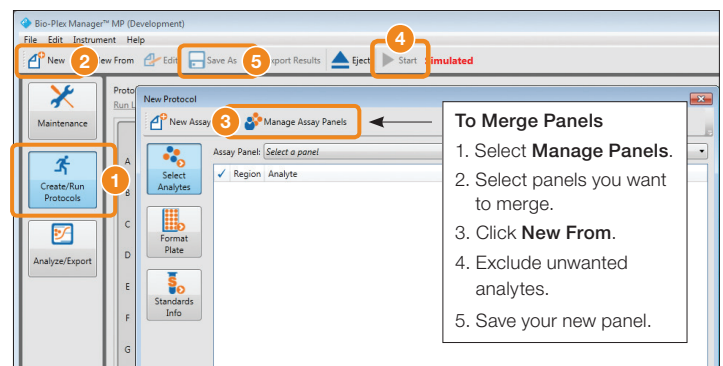


Fig. 6. Create or run existing protocols.

3 Analyze results by exporting to Bio-Plex Manager 6.1.

1. Select **Export Results** from the toolbar (Figure 7).

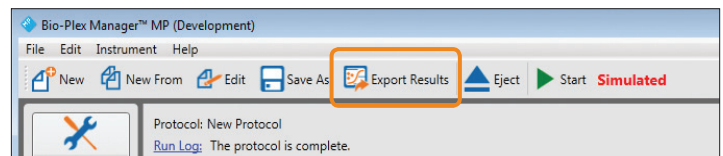


Fig. 7. Export results to Bio-Plex Manager 6.1.

4 Run Shut Down at the end of each day.

1. Navigate to the Maintenance screen.
2. Select the **Shut Down** routine.
3. Follow the instructions in the application window.
4. Click **Start**.

MAGPIX and xPONENT are trademarks of Luminex Corporation.
Microsoft is a trademark of Microsoft Corporation.



**Bio-Rad
Laboratories, Inc.**

Life Science
Group

Web site www.bio-rad.com **USA** 800 424 6723 **Australia** 61 2 9914 2800 **Austria** 01 877 89 01 **Belgium** 09 385 55 11 **Brazil** 55 11 5044 5699
Canada 905 364 3435 **China** 86 21 6169 8500 **Czech Republic** 420 241 430 532 **Denmark** 44 52 10 00 **Finland** 09 804 22 00
France 01 47 95 69 65 **Germany** 089 31 884 0 **Greece** 30 210 9532 220 **Hong Kong** 852 2789 3300 **Hungary** 36 1 459 6100 **India** 91 124 4029300
Israel 03 963 6050 **Italy** 39 02 216091 **Japan** 03 6361 7000 **Korea** 82 2 3473 4460 **Mexico** 52 555 488 7670 **The Netherlands** 0318 540666
New Zealand 64 9 415 2280 **Norway** 23 38 41 30 **Poland** 48 22 331 99 99 **Portugal** 351 21 472 7700 **Russia** 7 495 721 14 04
Singapore 65 6415 3188 **South Africa** 27 861 246 723 **Spain** 34 91 590 5200 **Sweden** 08 555 12700 **Switzerland** 026 674 55 05
Taiwan 886 2 2578 7189 **Thailand** 800 88 22 88 **United Kingdom** 020 8328 2000