

## PROTEIN ASSAYS

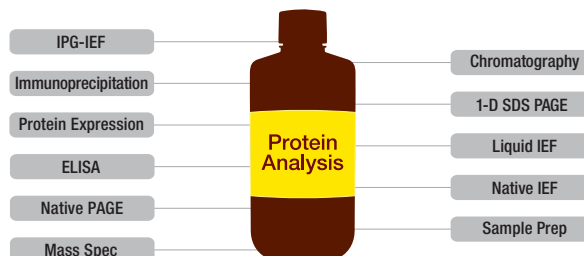
# Reagent Compatibility Chart for Bio-Rad Protein Assays

### Quick Guide

#### Reagent Compatibility

The following reagents were tested for their compatibility with Bio-Rad protein assays: Quick Start™ Bradford Protein Assay, Bio-Rad Protein Assay, DC™ Protein Assay, and RC DC™ Protein Assay. The concentrations represent maximum concentrations for standard assay.

#### Where to Use a Protein Assay



	Quick Start Bradford Protein Assay	Bio-Rad Protein Assay	DC Protein Assay	RC DC Protein Assay
Acetate	—	0.6 M	—	—
Acetone	10%	✓	—	—
Acetonitrile	10%	—	—	—
Acidic pH	—	✓	—	—
Adenosine	—	0.001 M	—	—
Amino acids	—	—	✓	—
Ammonium sulfate	1 M	1 M	0.5 M	—
Ampholytes pH 3–10	0.5%	0.5%	—	—
ASB-14	0.03%	—	—	—
Ascorbic acid	0.05 M	—	—	—
ATP	—	0.001 M	—	—
Barbital	—	✓	—	—
BES	—	2.5 M	—	—
Bis-Tris, pH 6.5	0.2 M	—	—	—
Boric acid	—	✓	—	—
Brij-35	—	—	1%	—
C <sub>12</sub> E <sub>8</sub>	—	—	0.2%	—
Cacodylate-Tris	—	0.1 M	—	—
Calcium chloride	0.04 M	—	0.05 M	—
CDTA	—	0.05 M	—	—
CHAPS	10%	—	1%	2%
CHAPSO	10%	—	1%	1

	Quick Start Bradford Protein Assay	Bio-Rad Protein Assay	DC Protein Assay	RC DC Protein Assay
Citrate	—	0.05 M	—	—
Deoxycholate	—	0.1%	—	—
Deoxycholic acid	0.2%	—	—	—
Dithioerythritol (DTE)	0.01 M	—	—	—
Dithiothreitol (DTT)	0.01 M	1 M	0.001 M	0.1 M
DMSO	5%	—	—	—
DNA	—	1 mg/ml	—	—
Eagle's MEM	✓	✓	—	—
Earle's salt solution	✓	✓	—	—
EDTA	0.2 M	0.1 M	0.025 M	0.1 M
EGTA	0.2 M	0.05 M	—	—
Ethanol	10%	✓	—	—
Formic acid	—	1.0 M	—	—
Fructose	—	✓	—	—
Glucose	20%	✓	—	—
Glutathione	—	✓	—	—
Glycerol	5%	99%	—	—
Glycine	0.1 M	0.1 M	—	—
Guanidine HCl	2 M	✓	0.4 M	—
Hank's salt solution	✓	✓	—	—
HCl	0.1 M	—	0.5 M	—

✓, compatible; —, not tested; X, not compatible.



	Quick Start Bradford Protein Assay	Bio-Rad Protein Assay	DC Protein Assay	RC DC Protein Assay
HEPES	0.1 M	0.1 M	—	—
Imidazole	0.2 M	—	—	0.5 M
Laemmli buffer	—	—	—	✓
Magnesium chloride	1 M	1 M	—	—
Malic acid	—	0.2 M	—	—
2-Mercaptoethanol	1 M	1 M	X	5%
MES	0.1 M	0.7 M	—	—
Methanol	10%	✓	—	—
Modified Dulbecco's PBS	✓	—	—	—
MOPS	0.1 M	0.2 M	—	—
NAD	0.002 M	0.001 M	—	—
NaSCN	—	3 M	—	—
Nonidet P-40	0.25%	—	2%	—
Octyl β-glucoside	0.5%	—	1%	—
Octyl β-thioglucopyranoside	1%	—	—	—
PBS	✓	—	—	—
Peptone	—	✓	—	—
Phenol Red	0.5 mg/ml	—	—	—
Phenol	—	5%	—	—
Phosphate	—	1 M	—	—
PIPES	0.2 M	0.5 M	—	—
PMSF	0.002 M	—	—	—
Polyadenylic acid	—	0.001 M	—	—
Polypeptides (MW <3000)	—	✓	—	—
Potassium chloride	2 M	1 M	—	—
Potassium phosphate	0.5 M	—	—	—
Pyrophosphate	—	0.2 M	—	—
rRNA	—	0.25 mg/ml	—	—
SB 3–10	0.1%	—	—	—
SDS	0.03%	0.1%	10%	—

	Quick Start Bradford Protein Assay	Bio-Rad Protein Assay	DC Protein Assay	RC DC Protein Assay
Sodium acetate, pH 4.8	0.2 M	—	—	—
Sodium azide	0.5%	—	0.05%	—
Sodium bicarbonate	0.2 M	—	—	—
Sodium carbonate	0.1 M	—	—	—
Sodium chloride	2.5 M	5 M	—	—
Sodium citrate, pH 4.8 or 6.4	0.2 M	—	—	—
Sodium hydroxide	0.1 M	—	0.5 M	2.5 M
Sodium phosphate	0.5 M	✓	—	—
Streptomycin sulfate	—	20%	—	—
Sucrose	10%	—	—	—
TBP	0.005 M	—	—	0.002 M
TBS	0.5x	—	—	—
TCEP	0.02 M	—	—	—
Thesit	—	—	1%	—
Thiourea	1 M	—	—	—
Thymidine	—	0.001 M	—	—
Total RNA	—	0.30 mg/ml	—	—
Tricine	0.05 M	✓	—	—
Triethanolamine, pH 7.8	0.05 M	—	—	—
Tris, pH 8	1 M	2 M	0.1 M	0.5 M
Tris/glycine	1x	—	—	—
Tris/glycine/SDS	0.5x	—	—	—
Triton X-100	0.05%	0.1%	1%	2%
tRNA	—	0.4 mg/ml	—	—
Tween 20	0.01%	—	1%	2%
Tyrosine	—	0.001 M	—	—
Urea	4 M	6 M	4 M	—
Vitamins	—	✓	—	—

✓, compatible; —, not tested; X, not compatible.

## Ordering Information

Catalog #	Description
5000001	<b>Bio-Rad Protein Assay Kit I</b> , includes dye concentrate and bovine γ-globulin standard
5000002	<b>Bio-Rad Protein Assay Kit II</b> , includes dye concentrate and bovine serum albumin standard
5000201	<b>Quick Start Bradford Protein Assay Kit 1</b> , includes 1 L 1x dye reagent, BSA standard (5 x 2 mg/ml)
5000202	<b>Quick Start Bradford Protein Assay Kit 2</b> , includes 1 L 1x dye reagent, BSA standard set (2 sets of 7 standards, 2 ml of 0.125–2.0 mg/ml)
5000203	<b>Quick Start Bradford Protein Assay Kit 3</b> , includes 1 L 1x dye reagent, bovine γ-globulin standard (5 x 2 mg/ml)
5000204	<b>Quick Start Bradford Protein Assay Kit 4</b> , includes 1 L 1x dye reagent, bovine γ-globulin standard set (2 sets of 7 standards, 2 ml of 0.125–2.0 mg/ml)

Catalog #	Description
5000111	<b>DC Protein Assay Kit I</b> , includes DC protein assay reagents package and bovine γ-globulin standard
5000112	<b>DC Protein Assay Kit II</b> , includes DC protein assay reagents package and bovine serum albumin standard
5000121	<b>RC DC Protein Assay Kit I</b> , includes RC reagents package, DC protein assay reagents package, bovine γ-globulin standard
5000122	<b>RC DC Protein Assay Kit II</b> , includes RC reagents package, DC protein assay reagents package, bovine serum albumin standard

Visit [bio-rad.com/proteinassaykits](http://bio-rad.com/proteinassaykits) for more information.

Costar is a trademark of Corning Incorporated. Triton is a trademark of Dow Chemical Company. Tween is a trademark of ICI Americas Inc.



**Bio-Rad  
Laboratories, Inc.**

Life Science  
Group

Web site [bio-rad.com](http://bio-rad.com) USA 1 800 424 6723 Australia 61 2 9914 2800 Austria 43 1 877 89 01 177 Belgium 32 (0)3 710 53 00 Brazil 55 11 3065 7550 Canada 1 905 364 3435 China 86 21 6169 8500 Czech Republic 420 241 430 532 Denmark 45 44 52 10 00 Finland 358 09 804 22 00 France 33 01 47 95 69 65 Germany 49 89 31 884 0 Hong Kong 852 2789 3300 Hungary 36 1 459 6100 India 91 124 4029300 Israel 972 03 963 6050 Italy 39 02 216091 Japan 81 3 6361 7000 Korea 82 2 3473 4460 Mexico 52 555 488 7670 The Netherlands 31 (0)318 540 666 New Zealand 64 9 415 2280 Norway 47 23 38 41 30 Poland 48 22 331 99 99 Portugal 351 21 472 7700 Russia 7 495 721 14 04 Singapore 65 6415 3188 South Africa 27 (0) 861 246 723 Spain 34 91 590 5200 Sweden 46 08 555 12700 Switzerland 41 026 674 55 05 Taiwan 886 2 2578 7189 Thailand 66 662 651 8311 United Arab Emirates 971 4 8187300 United Kingdom 44 020 8328 2000

