

ddPCR™ *SMN2* Copy Number Determination Kit



The ddPCR *SMN2* Copy Number Determination Kit is designed to determine the copy number of the *SMN2* gene only. The kit contains a 20x ddPCR *SMN2* Copy Number Determination Assay, positive controls, and ddPCR Supermix for Probes (No dUTP).

Combined with Bio-Rad's QX100™, QX200™, or QX200™ AutoDG™ Droplet Digital PCR (ddPCR) System, the ddPCR *SMN2* Kit allows you to:

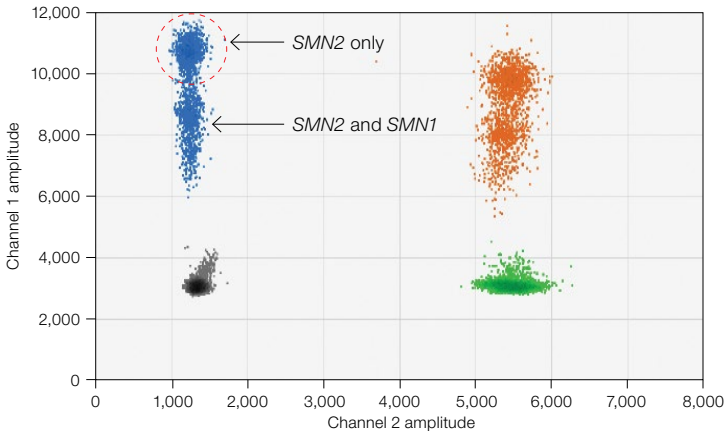
- **Generate accurate and reproducible copy number calls for *SMN2*** — provides superior performance
- **Perform high-throughput screening** — allows processing of several hundred samples in a single day
- **Benefit from economical cost per sample**

Visit bio-rad.com/web/SMN2CNkit for more information.

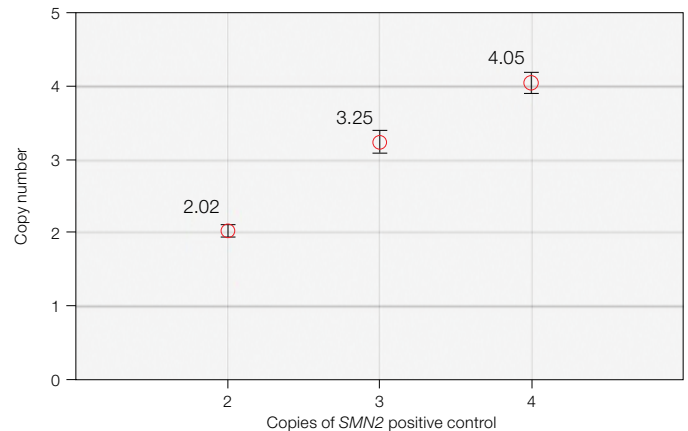
BIO-RAD

Near-Integer Copy Number Calls for *SMN2*

Spinal muscular atrophy (SMA) is a group of inherited diseases that cause muscles to lose function. The progressive muscle deterioration causes weakness and eventually leads to death. SMA affects the motor neurons, especially those in the spinal cord and brain stem. There are two highly similar genes that play a pivotal role in SMA: *SMN1* and *SMN2*. *SMN1* and *SMN2* genes can be distinguished by only two nucleotide differences: one in exon 7 and the other in exon 8. The ddPCR *SMN2* Copy Number Determination Kit is designed to detect the copy number of the *SMN2* gene only. For *SMN1* detection, use the ddPCR *SMN1* Copy Number Determination Kit (catalog #186-3500).



Detection of *SMN2* copy number. A 2-D fluorescence amplitude plot shows the wells of a sample duplexed with the *SMN2* and reference assays. The black cluster on the plot represents the negative droplets, the green cluster represents the droplets that are positive for the reference only, the blue cluster within the red circle represents the droplets that are present for *SMN2* only, and the orange cluster represents the droplets that are positive for both *SMN2* and the reference target.



Accurate and reproducible copy number calls for *SMN2*. Copy number plot shows positive controls, ranging from two to four copies, detected using the ddPCR *SMN2* Copy Number Determination Kit. All error bars are generated by QuantaSoft™ Software and represent a 95% confidence interval.

Ordering Information

Catalog #	Description
186-3503	ddPCR <i>SMN2</i> Copy Number Determination Kit , 200 x 20 µl reactions, includes 20x ddPCR <i>SMN2</i> Copy Number Determination Assay (1 x 200 µl vial), positive controls, ddPCR Supermix for Probes (No dUTP) (2 x 1 ml vials)

The QX100 or QX200 Droplet Digital PCR System and/or its use is covered by claims of U.S. patents, and/or pending U.S. and non-U.S. patent applications owned by or under license to Bio-Rad Laboratories, Inc. Purchase of the product includes a limited, non-transferable right under such intellectual property for use of the product for internal research purposes only. No rights are granted for diagnostic uses. No rights are granted for use of the product for commercial applications of any kind, including but not limited to manufacturing, quality control, or commercial services, such as contract services or fee for services. Information concerning a license for such uses can be obtained from Bio-Rad Laboratories. It is the responsibility of the purchaser/end user to acquire any additional intellectual property rights that may be required.



**Bio-Rad
Laboratories, Inc.**

Life Science
Group

Web site www.bio-rad.com **USA** 800 424 6723 **Australia** 61 2 9914 2800 **Austria** 43 1 877 89 01 **Belgium** 03 710 53 00 **Brazil** 55 11 3065 7550
Canada 905 364 3435 **China** 86 21 6169 8500 **Czech Republic** 420 241 430 532 **Denmark** 44 52 10 00 **Finland** 09 804 22 00
France 01 47 95 69 65 **Germany** 49 89 31 884 0 **Greece** 30 210 9532 220 **Hong Kong** 852 2789 3300 **Hungary** 36 1 459 6100 **India** 91 124 4029300
Israel 03 963 6050 **Italy** 39 02 216091 **Japan** 81 3 6361 7000 **Korea** 82 2 3473 4460 **Mexico** 52 555 488 7670 **The Netherlands** 0318 540666
New Zealand 64 9 415 2280 **Norway** 23 38 41 30 **Poland** 48 22 331 99 99 **Portugal** 351 21 472 7700 **Russia** 7 495 721 14 04
Singapore 65 6415 3188 **South Africa** 27 (0) 861 246 723 **Spain** 34 91 590 5200 **Sweden** 08 555 12700 **Switzerland** 026674 55 05
Taiwan 886 2 2578 7189 **Thailand** 1800 88 22 88 **United Kingdom** 020 8328 2000