



Model 491 Prep Cell and Mini Prep Cell



The Resolution Solution

BIO-RAD

The Prep Cell System for Preparative Gel Electrophoresis

Purification, Fractionation by Continuous-Elution Electrophoresis

The Model 491 prep cell and mini prep cell separate biomolecules quickly and efficiently by continuous-elution electrophoresis. In as little as 5 hours — using native PAGE, SDS-PAGE, or agarose gel electrophoresis — the prep cell separates and purifies proteins, nucleic acids, and other biomolecules into discrete liquid fractions for sequencing, antibody production, crystallography, and other downstream applications.

Virtually any molecule that can be resolved by gel electrophoresis can be purified on the Model 491 prep cell and mini prep cell.

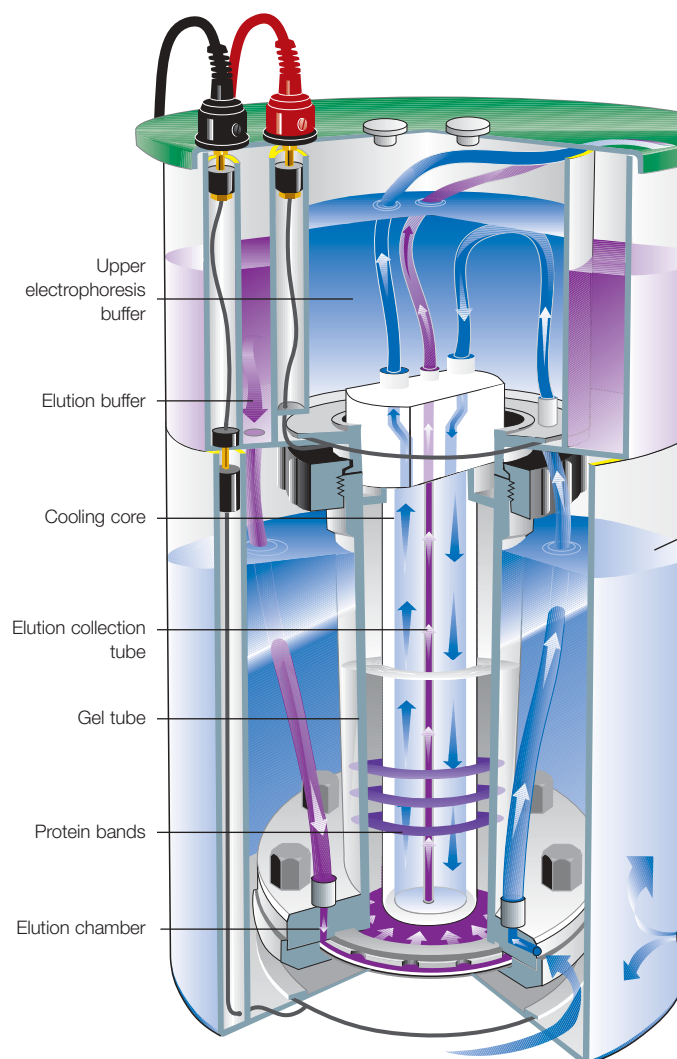
- Using SDS-PAGE, separate and purify proteins that differ in molecular mass by as little as 1,000 Da
- Using native PAGE, isolate proteins that differ in isoelectric point by as little as 0.1 pH unit
- Using agarose gel electrophoresis, purify large proteins, DNA, or RNA fragments (up to 18 kb)
- Process 1–500 mg samples with the Model 491 prep cell
- Process 0.5–1 mg samples with the mini prep cell
- Collect purified molecules automatically in individual liquid fractions
- Obtain sufficient amounts of purified protein for antibody production, sequencing, functional characterization, and a number of other downstream applications

The high sample capacity of the prep cell also makes this device a versatile tool for size-dependent pre-fractionation and enrichment of low-abundance proteins in proteomics applications.

Target Any Molecule for Purification

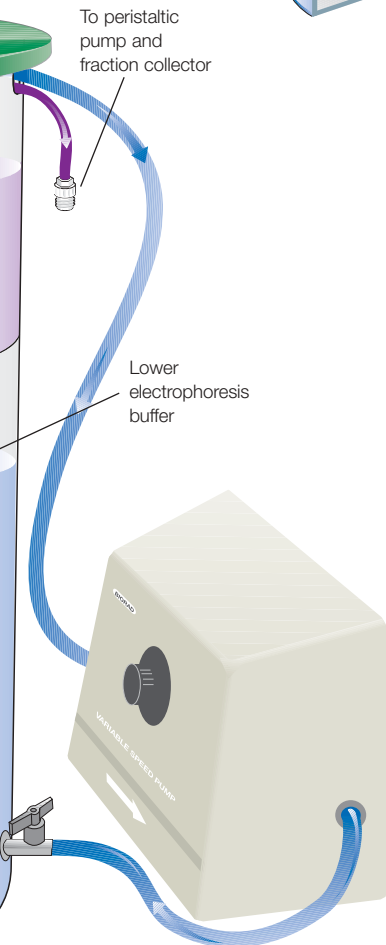
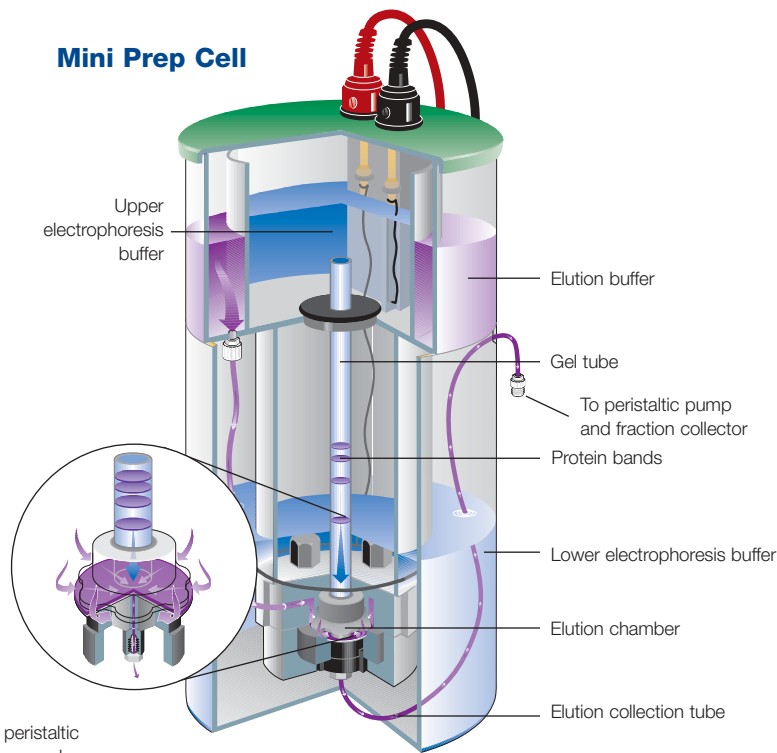
Using the Model 491 prep cell or mini prep cell, you can target any molecule in a complex mixture for purification. Simply select the optimal gel concentration for separating a given molecular weight protein from its nearest contaminants. When working with biologically active proteins, consult our comprehensive library of native electrophoresis buffers and recipes to select a system appropriate for your application. Continuous-elution electrophoresis does the rest.

Model 491 Prep Cell





Mini Prep Cell



How the Prep Cell System Works

During a run, samples are electrophoresed through a cylindrical gel. As molecules migrate through the gel matrix, they separate into ring-shaped bands. Individual bands migrate off the bottom of the gel, where they pass directly into a thin frit contained within the patented* elution chamber.

Elution buffer enters the chamber around the perimeter of a gasket that is specifically designed to ensure an even flow of buffer into the elution frit. The isolated bands and elution buffer are drawn radially inward to an elution tube by a peristaltic pump, and then driven on to a fraction collector. As molecules are purified, they are collected in discrete liquid fractions and are available for assay and characterization.

*US patent 4,877,510

Buffer recirculation pump

What Can You Expect?

Phycocyanin contains three protein subunits of 18.5, 21, and 23 kD. The two larger proteins are naturally blue and are visible during purification on the Model 491 prep cell.



Phycocyanin subunits are visible as individual bands during separation on the Model 491 prep cell.

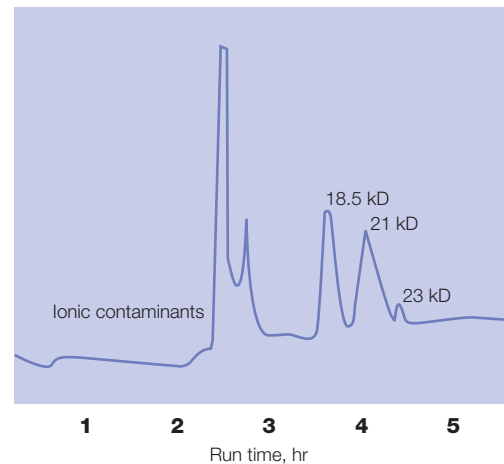
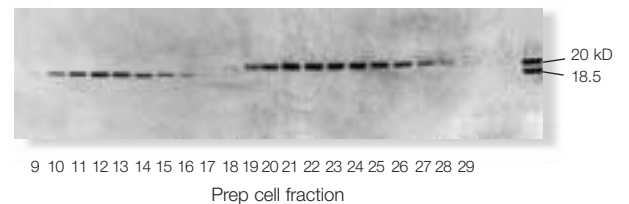


Chart recorder tracing for phycocyanin. The subunits eluted from the Model 491 prep cell over a 5 hour run.

Prep cell fractions 9–29, containing the separated 18.5 and 21 kD subunits of phycocyanin, were analyzed on silver-stained SDS-PAGE gels. Crude phycocyanin was loaded in the extreme right lane. The 18.5 kD subunit eluted in fractions 9–17 and the 21 kD subunit eluted in fractions 18–29.



Separation of phycocyanin fractions by molecular weight.



The World's Only Preparative 2-D System

Purify any protein with the resolution of analytical 2-D PAGE using Bio-Rad's unique preparative-scale 2-D system.

First dimension — Bio-Rad's revolutionary Rotofor® system rapidly separates proteins of interest from the bulk proteins in a crude sample using liquid-phase isoelectric focusing (IEF).

Second dimension — The Model 491 prep cell or mini prep cell is used to isolate individual proteins of interest from Rotofor fractions by continuous-elution PAGE.

Auxiliary Equipment

Model 491 prep cell

- 1,000 V power supply (PowerPac™ 1000 or 3000)
- Peristaltic pump with flow rate 1 ml/min
- Fraction collector

Mini prep cell

- 300 V power supply for SDS-PAGE applications (PowerPac™ Basic)
- 1,000 V power supply for native PAGE applications (PowerPac 1000 or 3000)
- Peristaltic pump with flow rate 100 µl/min
- Fraction collector

Specifications

The size of your sample will determine which prep cell you need.

	Model 491 Prep Cell	Mini Prep Cell
Sample load capacity	1–500 mg	0.5–1 mg
Sample volume	500 µl to 15 ml	50–500 µl
Dimensions (diameter x H)	7.5 x 14"	5 x 11"
Voltage limit	500 V	500 V
Current limit	40 mA	10 mA
Power limit	20 W	5 W
Elution buffer flow rate	1 ml/min	100 µl/min

Ordering Information

Catalog #	Description
Prep Cells	
170-2926	Model 491 Prep Cell, 100/120 V, includes buffer recirculation pump and reagent starter kit with protein standard
170-2927	Model 491 Prep Cell, 220/240 V
170-2915	Mini Prep Cell With Reagent Starter Kit
170-2908	Mini Prep Cell Without Reagent Starter Kit
Auxiliary Equipment	
165-5056	PowerPac 3000 Power Supply, 110/120 V
165-5057	PowerPac 3000 Power Supply, 220/240 V
165-5054	PowerPac 1000 Power Supply, 110/120 V
165-5055	PowerPac 1000 Power Supply, 220/240 V
164-5050	PowerPac Basic Power Supply
731-8140	Peristaltic Pump: Model EP-1 Econo™ Pump, 100/120 V
731-8141	Peristaltic Pump: Model EP-1 Econo Pump, 220/240 V
731-8122	Model 2110 Fraction Collector, 110 V
731-8120	Model 2110 Fraction Collector, 220 V
741-0002	BioFrac™ Fraction Collector

Protocols and References

Detailed protocols describing published applications for the prep cell system are available in the prep cell technical folder, bulletin 1555B. To receive a free copy, contact your local Bio-Rad representative or request it online at discover.bio-rad.com



The ProteomeWorks system is the global alliance between Bio-Rad Laboratories, Inc. and Waters Corporation (Micromass MS Technologies), dedicated to furthering proteomics research.

BIO-RAD

**Bio-Rad
Laboratories, Inc.**

Life Science
Group

Web site www.bio-rad.com USA (800) 4BIORAD Australia 02 9914 2800 Austria (01)-877 89 01 Belgium 09-385 55 11 Brazil 55 21 507 6191 Canada (905) 712-2771 Czech Republic + 420 2 41 43 05 32 China (86-21) 63052255 Denmark 44 52 10 00 Finland 09 804 22 00 France 01 47 95 69 65 Germany 089 318 84-177 Hong Kong 852-2789-3300 India (91-124)-6398112/113/114, 6450092/93 Israel 03 951 4127 Italy 39 02 216091 Japan 03-5811-6270 Korea 82-2-3473-4460 Latin America 305-894-5950 Mexico 52 5 534 2552 to 54 The Netherlands 0318-540666 New Zealand 64 9 415 2280 Norway 23 38 41 30 Poland + 48 22 331 99 99 Portugal 351-21-472-7700 Russia 7 095 721 1404 Singapore 65-6415 3188 South Africa 00 27 11 4428508 Spain 34 91 590 5200 Sweden 08 555 12700 Switzerland 061 717-9555 Taiwan (8862) 2578-7189/2578-7241 United Kingdom 020 8328 2000