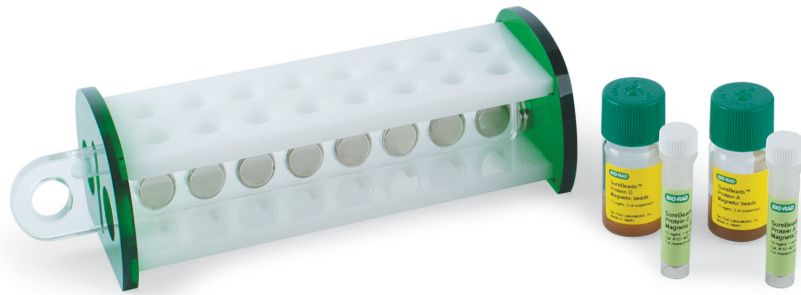


---

# SureBeads™ Magnetic Beads

Standard Immunoprecipitation Protocol



**BIO-RAD**

## Preparation and Binding

1. Thoroughly resuspend the SureBeads in their solution and transfer 100  $\mu$ l (1 mg at 10 mg/ml) of SureBeads to 1.5 ml tubes. Magnetize beads and discard supernatant.
2. Wash with 1,000  $\mu$ l PBS-T (PBS + 0.1% Tween 20):
  - a. Resuspend the beads thoroughly
  - b. Magnetize beads and discard supernatant, repeat three times (3x).

**Tip:** Resuspension can be achieved by vortexing or pipetting while the magnet slider is outside of the tube holder. If vortexing, spin down the tubes before magnetization to bring down drops from the tube cap.

3. Add 1–10  $\mu$ g antibody in final volume of 200  $\mu$ l and resuspend the beads.
4. Rotate 10 min at room temperature (RT).
5. Magnetize beads and discard supernatant.
6. Wash with 1,000  $\mu$ l PBS-T:
  - a. Resuspend the beads thoroughly
  - b. Magnetize beads and discard supernatant, repeat three times (3x).
7. Add the antigen-containing lysate, 100–500  $\mu$ l.
8. Rotate for 1 hr at room temperature (RT).
9. Magnetize beads and discard supernatant.

10. Wash with 1,000  $\mu$ l PBS-T:
  - a. Resuspend the beads thoroughly
  - b. Magnetize beads and discard supernatant, repeat three times (3x). Before the last magnetization, transfer the resuspended beads to a new tube.
11. Spin down all tubes for several seconds.
12. Magnetize beads and aspirate residual buffer from the tubes.

## Elution

### Elution Strategy 1:

- a. Add 20  $\mu$ l glycine 20 mM pH 2.0 and incubate 5 min at RT
- b. Magnetize beads and move eluent to a new vial
- c. Neutralize eluent with 2  $\mu$ l (10% eluent volume) 1 M phosphate buffer pH 7.4.

### Elution Strategy 2:

- a. Add 40  $\mu$ l 1x Laemmli buffer and incubate for 10 min at 70°C
- b. Magnetize beads and move eluent to a new vial.

# Ordering Information

Catalog #	Description
161-4013	<b>SureBeads Protein A Magnetic Beads</b> , 3 ml
161-4023	<b>SureBeads Protein G Magnetic Beads</b> , 3 ml
161-4916	<b>SureBeads Magnetic Rack</b> , 16 tube holder
161-4833	<b>SureBeads Starter Kit AG</b> , 3 ml protein A beads, 3 ml G beads and a 16 tube magnetic rack
161-4813	<b>SureBeads Starter Kit AA</b> , two 3 ml protein A beads and a 16 tube magnetic rack
161-4823	<b>SureBeads Starter Kit GG</b> , two 3 ml protein G beads and a 16 tube magnetic rack

Visit [www.bio-rad.com/SureBeadsIP](http://www.bio-rad.com/SureBeadsIP) for more information on SureBeads magnetic beads.

Tween is a trademark of ICI Americas Inc.

Copyright 2014 Bio-Rad Laboratories, Inc.



**Bio-Rad  
Laboratories, Inc.**

Life Science  
Group

**Web site** [www.bio-rad.com](http://www.bio-rad.com) **USA** 800 424 6723 **Australia** 61 2 9914 2800 **Austria** 01 877 89 01 **Belgium** 09 385 55 11 **Brazil** 55 11 3065 7550  
**Canada** 905 364 3435 **China** 86 21 6169 8500 **Czech Republic** 420 241 430 532 **Denmark** 44 52 10 00 **Finland** 09 804 22 00  
**France** 01 47 95 69 65 **Germany** 089 31 884 0 **Greece** 30 210 9532 220 **Hong Kong** 852 2789 3300 **Hungary** 36 1 459 6100 **India** 91 124 4029300  
**Israel** 03 963 6050 **Italy** 39 02 216091 **Japan** 81 3 6361 7000 **Korea** 82 2 3473 4460 **Mexico** 52 555 488 7670 **The Netherlands** 0318 540666  
**New Zealand** 64 9 415 2280 **Norway** 23 38 41 30 **Poland** 48 22 331 99 99 **Portugal** 351 21 472 7700 **Russia** 7 495 721 14 04  
**Singapore** 65 6415 3188 **South Africa** 27 861 246 723 **Spain** 34 91 590 5200 **Sweden** 08 555 12700 **Switzerland** 026674 55 05  
**Taiwan** 886 2 2578 7189 **Thailand** 1800 88 22 88 **United Kingdom** 020 8328 2000