

S3e™ Individual Dichroic Filter Holder

Catalog #	Description
144-1013	S3e Individual Dichroic Filter Holder , pkg of 1, empty dichroic filter holder with lens retaining ring

For research purposes only.

Intended Use

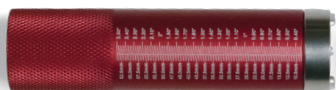
The S3e Individual Dichroic Filter Holder is used with the S3™ or S3e Cell Sorter to customize filter combinations for experimental fluorophore panels. The filter holders are designed to be easily accessible on the instrument for quick exchanges within the filter blocks. They are compatible with commercially available filters and installation is quick and easy. Unmounted 1 inch or 25 mm filters are required for the dichroic filter holders.

Contents

- Dichroic filter holder
- Lens retaining ring

Tools Required

- Spanner wrench (included in S3e Accessory Kit, catalog #145-1065)



- 2 mm hex driver (included in S3e Accessory Kit, catalog #145-1065)



Warning and Precautions

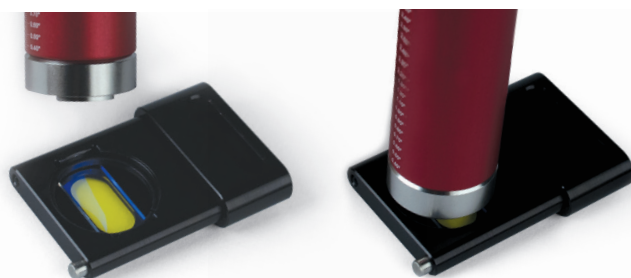
The filters are very delicate and require the utmost care in handling. These filters are made of glass and can cause injury, especially if they are cracked or shattered during the installation procedure.

If the filters are incorrectly installed, light transmission will not be directed to the correct channel. **In most cases, the labeled filter side is installed facing the incoming light.**

Note: Please refer to the filter vendor instructions for filter orientation.

Directions for Filter Installation

1. Set the spanner wrench into the S3e Individual Dichroic Filter Holder and ensure that the notches align with the retaining ring inside the holder.
2. Unscrew counterclockwise until the retaining ring disengages from the dichroic filter holder.



Setting the spanner wrench into the dichroic filter holder.

3. Carefully handling the filter only by its edges, install the filter by placing it in the holder with the arrow indicator or lettering facing the source of emitted light.
4. Secure the retaining ring back in place by using the spanner wrench and rotating clockwise. (It may help to set the ring in place lying flat in the opening before using the spanner wrench.)
5. Rotate the spanner wrench until the retaining ring fits gently against the filter without overtightening.
6. Verify that everything is tight and does not rattle.

Note: Use the 2 mm hex driver to unscrew and release the dichroic filter holder in the filter block. Replace with the newly assembled dichroic filter holder with installed filter.

Visit bio-rad.com/DichroicFilterHolder for more information.