

Bio-Plex Pro™ Human Isotyping Assays

Instruction Manual

For technical support, call your local Bio-Rad office, or in the U.S., call 1-800-424-6723.
For research use only. Not for diagnostic procedures.



BIO-RAD

Table of Contents

Introduction	1
Principle	2
Kit Contents and Storage	4
Recommended Materials	5
Assay Workflow	6
Important Considerations	7
Detailed Instructions	7
1. Plan Plate Layout	8
2. Prepare Instrument	9
3. Prepare Wash Method	10
4. Prepare Wash Buffer	11
5. Prepare Standards and Controls	11
6. Prepare Samples	14
7. Prepare Coupled Beads	16
8. Run Assay	17
9. Read Plate	21
Troubleshooting Guide	28
Plate Layout Template	33
Calculation Worksheet	34
Safety Considerations	35
Legal Notices	35
Ordering Information	36

Introduction

Bio-Plex Pro™ Human Isotyping Assays

Bio-Plex Pro isotyping assays enable you to measure multiple immunoglobulin isotypes in only 5 µl of sample. A detailed profile of the immune response to infection, disease, vaccination, or drug therapy can now be obtained in a single three hour experiment. Bio-Plex Pro isotyping assays are multiplex bead-based assays designed to quantitate multiple immunoglobulin isotypes in diverse matrices, including serum, plasma, and tissue culture supernatants. These assays are optimized for the Bio-Plex suspension array system, which utilizes xMAP technology. For a brief overview of the assay protocol, see the Bio-Plex isotyping assay workflow in this manual. The Bio-Plex suspension array system, which incorporates novel technology using color-coded beads, allows the simultaneous detection of up to 100 analytes in a single well of a 96-well microplate. The advantages over traditional methods of immunoglobulin isotyping include the ability to create a complete quantitative immunoglobulin class and subclass profile from limited sample, reduced sample preparation and assay time, and increased throughput. The use of magnetic beads allows researchers to automate wash steps.

Advantages of Magnetic Bead-Based Assays

Products in the Bio-Plex Pro family of assays are on magnetic polystyrene beads. These beads provide a choice in the method of assay preparation — standard or magnet-based. The standard workflow for Bio-Plex assay preparation requires multiple wash steps in which the 96-well filter plate is placed on a vacuum manifold to draw the liquid through the bottom of the filter plate. In contrast, magnet-based assay preparation permits liquid removal from the top of the well and thus does not require a filter plate or vacuum manifold. As a result, either an automated or manual washer can be used. Bio-Rad offers both solutions with the automated Bio-Plex Pro wash station and the manual Bio-Plex handheld magnetic washer. Magnetic separation offers greater convenience and reproducibility compared to vacuum filtration.

For a current listing of Bio-Plex assays, panels, and reagents, please visit www.bio-rad.com/bio-plex.

Principle

Technology

The Bio-Plex® suspension array system is built upon the three core elements of xMAP technology:

- Fluorescently dyed microspheres (also called beads), each with a distinct color code or spectral address to permit discrimination of individual tests within a multiplex suspension. This allows simultaneous detection of more than 100 different types of molecules in a single well of a 96-well microplate
- A dedicated flow cytometer with two lasers and associated optics to measure the different molecules bound to the surface of the beads. The Bio-Plex® MAGPIX™ uses LED and CCD technology to accomplish the same
- A high-speed digital signal processor that efficiently manages the fluorescence data

Assay Format

Bio-Plex Pro™ assays are essentially immunoassays formatted on magnetic beads. The assay principle is similar to that of a sandwich ELISA (Figure 1). Capture antibodies directed against the desired biomarker are covalently coupled to the beads. Coupled beads react with the sample containing the biomarker of interest. After a series of washes to remove unbound protein, a biotinylated detection antibody is added to create a sandwich complex. The final detection complex is formed with the addition of streptavidin-phycoerythrin (streptavidin-PE or SA-PE) conjugate. Phycoerythrin serves as a fluorescent indicator, or reporter.

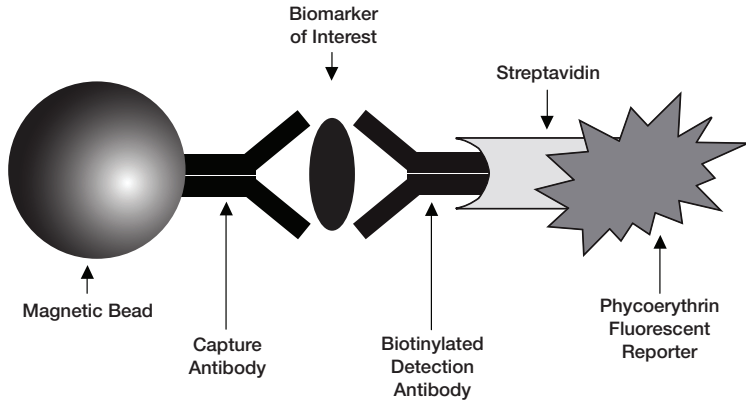


Fig. 1. Bio-Plex sandwich immunoassay.

Data Acquisition and Analysis

Data from the reactions are acquired using a Bio-Plex system or similar Luminex-based reader. When a multiplex assay suspension is drawn into the Bio-Plex 200 reader, for example, a red (635 nm) laser illuminates the fluorescent dyes within each bead to provide bead classification and thus assay identification. At the same time, a green (532 nm) laser excites PE to generate a reporter signal, which is detected by a photomultiplier tube (PMT). A high-speed digital processor manages data output, and Bio-Plex Manager™ software presents data as median fluorescence intensity (MFI) as well as concentration. The concentration of analyte bound to each bead is proportional to the MFI of the reporter signal.

Kit Contents and Storage

Reagents Supplied

Bio-Plex Pro™ isotyping assays are available in a convenient all-in-one kit format that includes assay, reagent, and diluent components in a single box.

Table 1. Contents of 1 x 96-well kits.

Component	Quantity*
Isotyping diluent	1 bottle, 180 ml
Assay buffer	1 bottle, 50 ml
Wash buffer (10x)	1 bottle, 60 ml
Detection antibody diluent	1 bottle, 5 ml
Streptavidin-PE (100x)	1 tube
Assay plate (96-well flat bottom plate)	1 plate
Sealing tape	1 pack of 4
Assay quick guide	1 booklet
Product data sheet	1
Coupled magnetic beads (20x)	1 tube
Detection antibodies (20x)	1 tube
Standard	1 vial
Quality Control	1 vial

* Volumes shown are approximate.

Storage and Stability

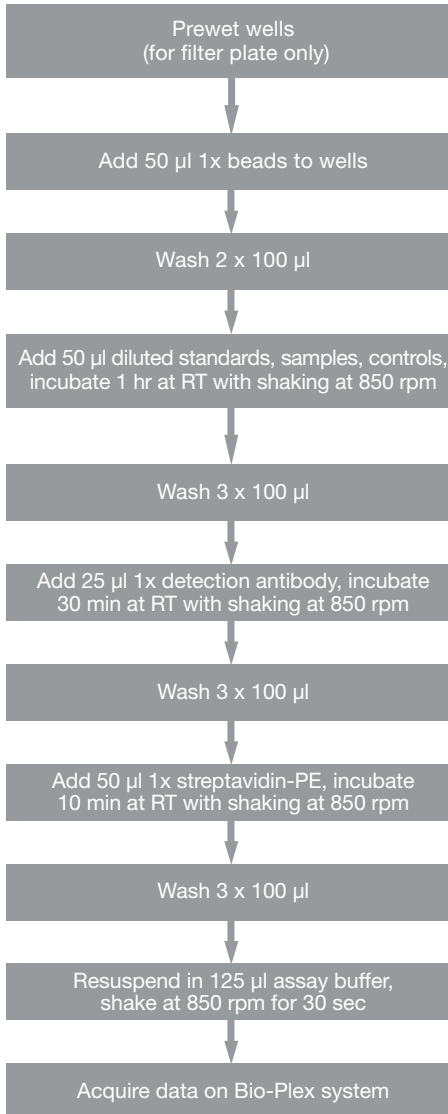
Kit contents should be stored at 4°C and never frozen. Coupled magnetic beads and streptavidin-PE should be stored in the dark. All components are guaranteed for a minimum of six months from the date of purchase when stored as specified.

Table 2. Recommended materials.

Item	Ordering Information
Bio-Plex® 200 system or Luminex system with HTF	Bio-Rad catalog #171-000205
Bio-Plex validation kit Note: Run the validation kit monthly to ensure optimal performance of fluidics and optics systems	Bio-Rad catalog #171-203001
Bio-Plex calibration kit Note: Run the calibration kit daily to standardize fluorescence signal	Bio-Rad catalog #171-203060
Bio-Plex Pro wash station For use with magnetic bead-based assays only	Bio-Rad catalog #300-34376
Bio-Plex Pro II wash station For use with both polystyrene (nonmagnetic) and magnetic bead-based assays	Bio-Rad catalog #300-34377
Bio-Plex handheld magnetic washer For use with magnetic bead-based assays only	Bio-Rad catalog #170-20100
Bio-Plex Pro flat bottom plates (forty 96-well plates) For magnetic separation on the Bio-Plex Pro wash station	Bio-Rad catalog #171-025001
Titertube® micro test tubes For preparing replicate standards, samples, and controls prior to loading the plate	Bio-Rad catalog #223-9390
Microtiter plate shaker IKA MTS 2/4 shaker for 2 or 4 microplates or Barnstead/Lab-Line Model 4625 plate shaker (or equivalent capable of 300–1,100 rpm)	IKA catalog #320-8000 WWR catalog #57019-600
Bio-Rad® Aurum™ vacuum manifold For vacuum filtration	Bio-Rad catalog #732-6470
BR-2000 vortexer	Bio-Rad catalog #166-0610
Reagent reservoirs, 25 ml For capture beads and detection antibodies	VistaLab catalog #3054-1002 or VistaLab catalog #3054-1004
Reagent reservoir, 50 ml (for reagents and buffers)	VistaLab catalog #3054-1006
Pall Life Science Acrodisc: 25 mm PF syringe filter (0.8/0.2 µm Supor membrane)	Pall Life Sciences catalog #4187
Filter plate, 1 x 96 with clear plastic lid and tray	Bio-Rad catalog #171-304502

Other: 15 ml polypropylene tubes for reagent dilutions, calibrated pipets, pipet tips, sterile distilled water, aluminum foil, absorbent paper towels, 1.5 or 2 ml microcentrifuge tubes, and standard flat bottom microplate (for calibrating vacuum manifold).

Assay Workflow



Important Considerations

Instruments and Software

The Bio-Plex Pro™ assays described in this manual are compatible with all currently available Luminex-based life science research instruments. Assays can be read and analyzed with either Bio-Plex Manager™ software or Luminex xPONENT software (section 9).

Assay Procedures

Pay close attention to vortexing, shaking, and incubation times and to Bio-Plex® reader PMT (RP1) setting, as these have been optimized specifically for each assay panel.

Assay Quick Guide

Each assay kit includes a printed Bio-Plex Pro Assay Quick Guide (bulletin #10028208), which can be used to prepare and run a full 1 x 96-well assay plate. Users can also download a copy at www.bio-rad.com/bio-plex.

Bead Regions

Bead regions for all analytes are listed in the Read Plate section.

Multiplexing Capabilities

Due to different sample dilution considerations, IgE assay should not be multiplexed with other assays in the isotyping product line.

Multiplexing singleplex assays (IgA, IgM, and IgG total) is not recommended due to lot differences of components. If assaying for IgA and IgM, then consider running the 6-plex panel.

To avoid cross-reactivity, IgG total assay should not be multiplexed with any of its subclasses (IgG₁, IgG₂, IgG₃, and IgG₄).

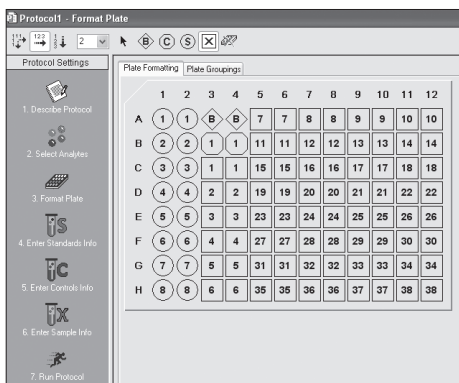
Detailed Instructions

The following pages provide detailed instructions for each step of the assay procedure, including preparation, running the assay, and reading the plate with Bio-Plex Manager™ and Luminex xPONENT software.

1. Plan Plate Layout

Prior to running the assay, determine the total number of wells in the experiment using the Plate Layout Template on page 33 or the Plate Formatting tab in Bio-Plex Manager™ software. A suggested plate layout is shown in Figure 2, with all conditions in duplicate.

1. Assign standards to columns 1 and 2, with the highest concentration in row A and the lowest concentration in row H.
2. Assign the blank to wells A3 and A4. The blank should consist of your chosen isotyping diluent or a diluent similar to your final sample type or matrix. Note that Bio-Plex Manager automatically subtracts the blank (B) MFI value from all other assay wells.
3. Controls, either user-specified or the quality controls supplied, are assigned to wells in columns 3 and 4.
4. The remainder of the plate is available for samples.
5. Once the total number of wells is known, calculate the required volumes of beads, detection antibody, and streptavidin-PE needed. Use Tables 6, 8, and 9, respectively, or the Calculation Worksheet on page 34.



Legend



Standard



Blank



Samples



Controls

Fig. 2. Suggested plate layout. For detailed instructions on plate formatting in Bio-Plex Manager software, see section Read Plate.

2. Prepare Instrument



These directions are specific for the Bio-Plex® 100/200 reader. To prepare either a Bio-Plex 3D or Bio-Plex® MAGPIX™ reader, consult their respective user manuals.

Note: While the instrument is warming up, bring the 10x wash buffer, assay buffer, and isotyping diluent to room temperature. Keep other items on ice until needed. Also, begin to thaw frozen samples.


Start up and calibrate the Bio-Plex system with Bio-Plex Manager™ software prior to setting up the assay. The calibration kit should be run daily or before each use of the instrument to standardize the fluorescent signal. For instructions on using other xMAP system software packages, contact Bio-Rad Technical Support.

The validation kit should be run monthly to ensure optimal performance of fluidics and optics systems. Refer to either the software manual or online Help for directions on how to conduct validation.


Start Up System (Bio-Plex 100, 200, or similar)

1. Empty the waste bottle and fill the sheath fluid bottle before starting if high throughput fluidics (HTF) are not present. This will prevent fluidic system backup and potential data loss.
2. Turn on the reader, XY platform, and HTF (if included). Allow the system to warm up for 30 min (if not already done).
3. Select Start up  and follow the instructions. If the system is idle for 4 hr without acquiring data, the lasers will automatically turn off. To reset the 4-hr countdown, select Warm up  and wait for the lasers/optics to reach operational temperature.

Calibrate System

1. Select Calibrate  and confirm that the default values for CAL1 and CAL2 are the same as the values printed on the bottle of Bio-Plex calibration beads. Use the Bio-Plex system low RP1 target value.

2. Select OK and follow the software prompts for step-by-step instructions for CAL1 and CAL2 calibration.

Note: In Bio-Plex Manager version 6.1 and higher, startup, warm up, and calibration can be performed together by selecting the “Start up and calibrate” icon. 

3. Prepare Wash Method

Bio-Plex Pro assays are compatible with both magnetic separation and vacuum filtration methods. However, for best results, we recommend performing the assays in a flat bottom plate with magnetic separation.

Table 3. Summary of compatible wash stations and plate types.

Wash Method	Wash Station	Assay Plate
Magnetic separation	Bio-Plex Pro™ Bio-Plex Pro II (use MAG programs) Bio-Plex handheld magnetic washer	Flat bottom plate
Vacuum filtration	Bio-Plex Pro II (use VAC programs) Vacuum manifold (manual)	Filter plate

Setting up the Bio-Plex Pro or Bio-Plex Pro II Wash Station

The wash station does not require calibration; however, it should be primed before use. For more information, refer to the Bio-Plex Pro and Pro II wash station quick guide (bulletin #5826).

1. Install the appropriate plate carrier on the wash station.
2. Use the prime procedure to prime channel 1 with wash buffer.

Setting Up the Bio-Plex Handheld Magnetic Washer

Place an empty flat bottom plate on the magnetic washer by sliding it under the retaining clips. Push the clips inward to secure the plate. Make sure the plate is held securely. If needed, the clips can be adjusted for height and tension. For detailed instructions, refer to the user guide (bulletin #10023087).

Setting up a Vacuum Manifold

Calibrate the vacuum manifold by placing a standard 96-well flat bottom plate on the unit and adjusting the pressure to -1 to -3 " Hg. In general, 100 μ l liquid should take 3–4 sec to clear the well. For more detailed instructions, refer to bulletin #10005042.

4. Prepare Wash Buffer

1. Bring the 10x stock solution to room temperature.
2. If crystals exist, ensure that they are completely dissolved. Mix the 10x stock solution by inversion before preparing the 1x wash buffer.
3. To prepare 1x wash buffer, dilute 1 part of 10x stock solution with 9 parts of deionized water.

5. Prepare Standards and Controls

General Instructions

- It is essential to prepare standards and quality controls exactly as described in this section. Incorrect preparation may lead to low signal or variable measurements from plate to plate
- The product data sheet provided lists the most concentrated point on the standard curve (S1). Enter the values and units into Bio-Plex Manager™ software as instructed in section 9

Using the Quality Controls (optional)

One vial of quality controls is included. Its use is intended for monitoring the day-to-day quality of assay results.

Selecting a Diluent for Standards and Controls

Refer to Table 4 for recommended diluents based on different sample types.

In order to meet the lot-specific control ranges provided on the product data sheet, both the standards and controls should be reconstituted in Bio-Plex® isotyping diluent. If reconstituting in a different diluent, users will need to establish/validate their own control ranges or acceptance criteria.

Table 4. Summary of recommended diluents for samples.

Sample Type	Diluent for Standard and Controls*	Add BSA
Serum and plasma	Isotyping diluent	None
Culture media, with serum	Culture media	None
Culture media, serum-free	Culture media	To 0.5% final

* If using diluents other than the isotyping diluent provided, then users must establish their own control ranges.

Reconstitute Standards and Quality Controls

This procedure prepares enough standard to run each dilution in duplicate.

Note: The appearance of the lyophilized standards or controls may vary from a white pellet to clear crystals. Regardless of appearance, the vials have passed QC specifications and perform accordingly.

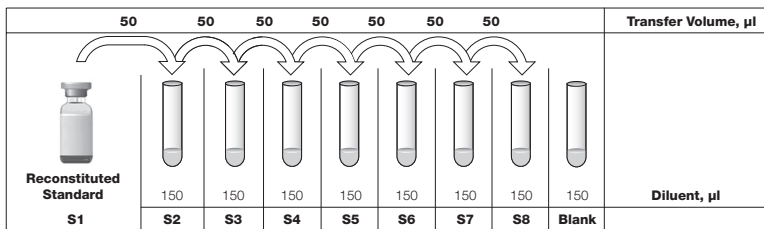
1. Gently tap the vial of lyophilized standards on a solid surface to ensure that all material is at the bottom of the vial.
2. Reconstitute the vial of standards with **781 µl** of the appropriate diluent. Optional: at the same time, reconstitute the vial of controls with **250 µl** of the appropriate diluent as summarized in Table 4. **Controls do not require further dilution.** If using diluents other than the isotyping diluent provided, then users must establish their own control ranges.
3. Gently **vortex** the reconstituted standards and controls for **5 sec**, then incubate **on ice for 30 min**. It is important that reconstitution of standards and controls is started and ended at the same time. Be consistent with this incubation time to ensure optimal assay performance and reproducibility.
4. During the incubation period, prepare the samples as instructed in the Prepare Samples section.

Prepare the Standard Dilution Series

The following procedure produces an eight-point standard curve with a fourfold dilution between each point. Pipet carefully using calibrated pipets and use a new pipet tip for every volume transfer.

1. Label eight 1.5 ml microcentrifuge tubes S2 through S8 and Blank. Alternatively, using Titertube® micro test tubes may prove to be more convenient if a multichannel pipet will be used to load the plate.
2. Add **150 µl** of the appropriate diluent to tubes S2–S8 and Blank. (Figure 3).
3. **Vortex** reconstituted standards at medium speed for **5 sec** before removing any volume. Transfer **50 µl** to the S2 tube containing the chosen standard diluent. **Vortex** for **5 sec**.
4. Use a new pipet tip to transfer **50 µl** from the S2 tube to the S3 tube. **Vortex** for **5 sec**.
5. Continue with 1:4 (fourfold) serial dilutions as shown in Figure 3.
6. Use reconstituted and diluted standards and controls immediately. Do not freeze for future use.

Fig. 3. Preparing a fourfold dilution series with a single reconstituted standard.



6. Prepare Samples

These assays are designed to quantitate classes and subclasses of immunoglobulins in serum, plasma, and cell culture media. For optimal recovery and sensitivity, it is important to properly prepare samples.

- Once thawed, keep samples on ice. Prepare dilutions just prior to the start of the assay and equilibrate to room temperature before use
- Prepare sample dilutions in 1.5 or 2 ml microcentrifuge tubes. If a multichannel pipet will be used to load the plate, then aliquot the required volumes into Titertube® micro test tubes.
- Do not freeze diluted samples

Table 5. Summary of recommended sample diluents and dilution factors.

Sample Type	Diluent	Add BSA	Recommended Sample Dilution
Serum and plasma	Isotyping diluent	None	1:40,000 for IgG ₁ , IgG ₂ , IgG ₃ , IgG ₄ , IgA, IgM, IgG total 1:500 for IgE
Culture media, with serum	Culture media	None	User defined
Culture media, serum-free	Culture media	To 0.5% final	User defined

Sample Preparation

Serum and Plasma

EDTA or citrate is preferred as an anticoagulant. Heparin-treated plasma, while compatible with Bio-Plex Pro™ assays, may absorb certain soluble proteins of interest. Avoid using hemolyzed samples as this may lead to false positive results.

1. Draw whole blood into collection tubes containing anticoagulant. Invert tubes several times to mix.
2. For serum, allow blood to clot at room temperature for **30 to 45 min**. For plasma, proceed directly to the centrifugation steps.
3. Perform centrifugation at 1,000 x g for **15 min** at 4°C and transfer the serum or plasma to a clean polypropylene tube.

4. Extremely lipemic samples may be filtered through a 0.2 μm filter to prevent clogging.
5. Dilute samples with isotyping diluent following a 2-step dilution scheme as noted below, **vortexing** for **5 sec** between each dilution step.
1:40,000 dilution for IgG₁, IgG₂, IgG₃, IgG₄, IgA, IgM, and IgG total
Step 1. 5 μl of sample + 995 μl of diluent
Step 2. 5 μl of solution from first step + 995 μl of diluent
1:500 dilution for IgE
Step 1. 5 μl of sample + 120 μl of diluent
Step 2. 10 μl of solution from first step + 190 μl of diluent
6. Assay samples immediately or aliquot into single-use tubes and store at -70°C . Avoid repeated freeze-thaw cycles.

Cell Culture Supernatant

1. Collect supernatants and centrifuge at 1,000 x g for **15 min** at 4°C . For cell lines cultured in serum-free culture media, collect samples and add BSA as a carrier protein to a final concentration of 0.5% to stabilize protein analytes and to prevent adsorption to labware.
2. Transfer to a clean polypropylene tube. If cellular debris or precipitates are present, centrifuge again at 10,000 x g for **10 min** at 4°C .
3. Reconstitute and dilute the isotyping standard in the same medium or matrix in which cells are prepared. Be sure to include all medium components (such as **FBS**) as appropriate. To minimize error due to lot-to-lot variation of culture media, use the same lot of culture medium that was used to prepare the cells.
4. Assay immediately or store samples in single-use aliquots at -70°C . Avoid repeated freeze-thaw cycles.

7. Prepare Coupled Beads

1. Use Table 6 or the Calculation Worksheet on page 34 to calculate the volume of coupled beads and assay buffer needed.
2. Add the required volume of Bio-Plex® assay buffer to a 15 ml polypropylene tube.
3. **Vortex** the 20x stock of coupled beads at medium speed for **30 sec**. Carefully open the cap and pipet any liquid trapped in the cap back into the tube. This is important to ensure maximum bead recovery. **Do not centrifuge the vial**; doing so will cause the beads to pellet.
4. Dilute coupled beads to 1x by pipetting the required volume into the 15 ml tube. **Vortex**.

Each well of the assay requires 2.5 μl of the 20x stock adjusted to a final volume of 50 μl in assay buffer.

5. Protect the beads from light with aluminum foil. Equilibrate to room temperature prior to use.

Note: To minimize volume loss, use a 200–300 μl capacity pipet to remove beads from the 20x stock tube. If necessary, perform the volume transfer in two steps. Do not use a 1,000 μl capacity pipet and/or wide bore pipet tip.

Table 6. Preparing 1x coupled beads from 20x stock (includes 20% excess volume).

# of Wells	20x Beads, μl	Assay Buffer, μl	Total Volume, μl
96	288	5,472	5,760
48	144	2,736	2,880

8. Run Assay

Considerations

- Bring all buffers, diluents, diluted standards, diluted coupled beads, and samples to room temperature before use
- Use calibrated pipets and pipet carefully, avoiding bubbles. Use new pipet tips for every volume transfer
- Pay close attention to vortexing, shaking, and incubation instructions. Deviation from the protocol may result in low assay signal and assay variability
- Assay incubations are carried out in the dark at **850 ± 50 rpm**. Cover the plate with sealing tape and protect from light with aluminum foil

Table 7. Summary of wash steps and incubations. After each assay step, select the appropriate Bio-Plex Pro™ wash station program or perform the appropriate manual wash step as summarized below.

Assay Step	Bio-Plex Pro or Pro II Wash Station	Bio-Plex Pro II Wash Station	Handheld Magnet or Vacuum Manifold
	Magnetic Program	Vacuum Program	Manual Wash Steps
Add beads to plate	MAG x2	VAC x2	2 x 100 µl
Sample incubation			
Detection Ab incubation	MAG x3	VAC x3	3 x 100 µl
SA-PE incubation			

Considerations When Using a Vacuum Manifold

- After each incubation, place the filter plate on a calibrated vacuum apparatus and remove the liquid by vacuum filtration
- To wash, add 100 µl wash buffer to each well and remove the liquid as before. Ensure that all wells are exposed to the vacuum
- Thoroughly blot the bottom of the filter plate with a clean paper towel between each vacuum step to prevent cross contamination
- Place the assay plate on the plastic plate holder/tray as needed
- Before each incubation, gently cover the plate with a new sheet of sealing tape. Avoid pressing down over the wells to prevent leaking from the bottom

Add Coupled Beads, Samples, Standards, Blank, and Controls

1. Cover unused wells of the assay plate with sealing tape.
2. Prewet the filter plate. Skip this step if using a flat bottom plate.
 - a) Prewet the wells with **100 µl** assay buffer and remove the liquid by vacuum filtration. Dry the bottom of the filter plate thoroughly by blotting on a clean paper towel.
3. **Vortex** the diluted (1x) beads for **30 sec** at medium speed. Pour into a reagent reservoir and transfer **50 µl** to each well of the assay plate.

***TIP:** A multichannel pipet is highly recommended for ease of use and efficiency.*

4. **Wash the plate two times** with **100 µl** Bio-Plex® wash buffer according to your wash method of choice.
5. **Vortex** the diluted samples, standards, blank, and controls for **5 sec**. Transfer **50 µl** of each to the appropriate well of the assay plate, changing the pipet tip after every volume transfer.
6. **Cover** with a new sheet of sealing tape and **incubate** in the dark for **1 hr** at room temperature with shaking at **850 ± 50 rpm**.

Prepare and Add Detection Antibodies

1. While the samples are incubating use Table 8 or the Calculation Worksheet on page 34 to calculate the volume of detection antibodies and Bio-Plex detection antibody diluent needed. Detection antibodies should be prepared **10 min before use**.
2. Add the required volume of Bio-Plex detection antibody diluent to a 15 ml polypropylene tube.
3. **Vortex** the 20x stock of detection antibodies for **15 sec** at medium speed, then perform a **30 sec** spin to collect the entire volume at the bottom of the tube.

- Dilute detection antibodies to 1x by pipetting the required volume into the 15 ml tube. **Vortex**.

Each well of the assay requires 1.25 μl of the 20x stock adjusted to a final volume of 25 μl in detection antibody diluent.

Table 8. Preparing 1x detection antibodies from 20x stock (includes 25% excess volume).

# of Wells	20x Detection Antibodies, μl	Detection Antibody Diluent, μl	Total Volume, μl
96	150	2,850	3,000
48	75	1,425	1,500

- After incubating the beads, samples, standards, blank, and controls, slowly remove and discard the sealing tape.
- Wash the plate three times** with **100 μl** wash buffer according to the wash method of choice.
- Vortex** the diluted (1x) detection antibodies gently for **5 sec**. Pour into a reagent reservoir and transfer **25 μl** to each well of the assay plate using a multichannel pipet.
- Cover** with a new sheet of sealing tape and **incubate** in the dark for **30 min** at room temperature with shaking at **850 \pm 50 rpm**.

Prepare and Add Streptavidin-PE (SA-PE)

- While detection antibodies are incubating, use Table 9 or the Calculation Worksheet on page 34 to calculate the volume of SA-PE and assay buffer needed. SA-PE should be prepared **10 min before use**.
- Add the required volume of assay buffer to a 15 ml polypropylene tube.
- Vortex** the 100x stock of SA-PE for **5 sec** at medium speed. Perform a **30 sec** spin to collect the entire volume at the bottom of the vial.

- Dilute SA-PE to 1x by pipetting the required volume into the 15 ml tube. **Vortex** and protect from light until ready to use.

Each well of the assay requires 0.5 μ l of the 100x stock adjusted to a final volume of 50 μ l in assay buffer.

Table 9. Preparing 1x SA-PE from 100x stock (includes 25% excess volume).

# of Wells	100x SA-PE, μ l	Assay Buffer, μ l	Total Volume, μ l
96	60	5,940	6,000
48	30	2,970	3,000

- After detection antibody incubation, slowly remove and discard the sealing tape.
- Wash the plate three times** with **100 μ l** of wash buffer according to the wash method of choice.
- Vortex** the diluted (1x) SA-PE at medium speed for **5 sec**. Pour into a reagent reservoir and transfer **50 μ l** to each well using a multichannel pipet.
- Cover** with a new sheet of sealing tape and **incubate** in the dark for **10 min** at room temperature with shaking at **850 \pm 50 rpm**.
- After the streptavidin-PE incubation step, slowly remove, then discard the sealing tape.
- Wash the plate three times** with **100 μ l** of wash buffer according to the wash method of choice.
- To resuspend beads for plate reading, add **125 μ l** assay buffer to each well. Cover the plate with a new sheet of sealing tape. Shake at room temperature at **850 \pm 50 rpm** for **30 sec** and slowly remove the sealing tape. Ensure that the plate cover has been removed before placing the plate on the reader.

9. Read Plate


Bio-Plex Manager™ software is recommended for all Bio-Plex Pro™ assay data acquisition and analysis. Instructions for Luminex xPONENT software are also included. For instructions using other xMAP system software packages, contact Bio-Rad Technical Support or your regional Bio-Rad field applications specialist.

Prepare Protocol in Bio-Plex Manager Software Version 6.0 and Higher

The protocol should be prepared in advance so that the plate is read as soon as the experiment is complete.

A protocol file specifies the analytes in the assay, the plate wells to be read, sample information, the values of standards and controls, and instrument settings.

Bio-Plex Manager software versions 6.0 and higher contain protocols for most Bio-Plex® assays. Choose from available protocols or create a new protocol. To create a new protocol, select **File**, then **New** from the main menu. Locate and follow the steps under **Protocol Settings**.

1. Click **Describe Protocol** in the Protocol Settings bar and enter information about the assay (optional).
2. Click **Select Analytes** and create a new panel. Visually confirm the selected analytes and proceed to step 3.
 - a. Click the **Add Panel** button  in the Select Analytes toolbar. Enter a new panel name. Select **Bio-Plex Pro Assay Magnetic** from the assay dropdown list. If using Bio-Plex Manager version 5.0 or lower, select **MagPlex** from the assay dropdown list.

- b. Click the **Add** button. Enter the bead region number and name for the first analyte. Click **Add Continue** to repeat for each analyte in the assay.

For reference, bead regions are shown in Table 10.

Table 10. Bead regions for Bio-Plex Pro isotyping assays.

Analyte	Bead Region	Analyte	Bead Region
IgG ₁	54	IgA	12
IgG ₂	21	IgM	56
IgG ₃	36	IgE	38
IgG ₄	72	IgG Total	66

- c. Click the **Add** button when the last analyte has been added and click **OK** to save the new panel.
 - d. Highlight analytes from the Available list (left) and move to the Selected list (right) using the **Add** button. To move all analytes at once, simply click the **Add All** button.
 - e. If some of the analytes need to be removed from the Selected list, highlight them and select **Remove**. If desired, it is possible to rename the panel by clicking on **Rename Panel** and entering a new panel name.
3. Click **Format Plate** and format according to the plate template created in section 1 (Plan Plate Layout). To modify the plate layout, follow the steps below (see Figure 4).
 - a. Select the **Plate Formatting** tab.
 - b. Select the standards icon **(S)** and drag the cursor over all the wells that contain standards. Repeat this process for blanks **(B)**, controls **(C)**, and samples **(X)**. Note that Bio-Plex Manager automatically subtracts the blank FI value from all other assay wells.

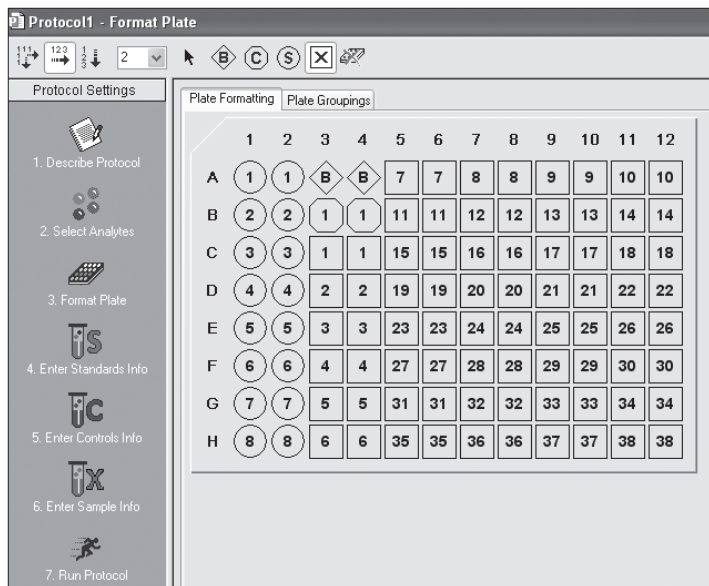


Fig. 4. Plate formatting.

4. Click **Enter Standards Info**.

- Enter the highest concentration and units of each analyte in the top row (labeled S1) of the table. S1 concentration information is listed in the product data sheet.
- Enter a dilution factor of 4 and click **Calculate**. The concentrations for each standard point will be populated for all analytes in the table.
- Optional: enter the lot number of the vial of standards into the Standard Lot box and click **Save**.

5. Click **Enter Controls Info**.

- For user-specified controls, select an analyte from the dropdown menu, then enter a description and concentration. Repeat for each additional analyte in the assay.

- b. For the vial of quality controls supplied, format the appropriate wells as controls and enter descriptions, but leave the concentrations blank. Alternatively, the quality controls can be formatted as samples with clear descriptions such as “quality control.” In any case, **the expected control ranges provided on the product data sheet are not entered into Bio-Plex Manager software version 6.1 and earlier.**
6. Click **Enter Sample Info** and enter sample information and the appropriate dilution factor.
 7. Click **Run Protocol** and confirm that the settings follow Table 11.

Table 11. Read the plate using the appropriate instrument settings.



Instrument	RP1 (PMT)	DD Gates	Bead Events
Bio-Plex 100, 200*	Low	5,000 (low), 25,000 (high)	50
Bio-Plex 3D*	Standard	Select MagPlex beads	50
Bio-Plex® MAGPIX™	N/A, use default instrument settings		

* A similar Luminex-based system may be used.

- a. Confirm that data acquisition is set to **50 beads per region**.
- b. In Bio-Plex Manager software prior to 6.1, go to Advanced Settings and confirm that the bead map is set to **100 region**, the sample size is set to **50 µl**, and the doublet discriminator (DD) gates are set to **5,000 (Low) and 25,000 (High)**. In Bio-Plex Manager software versions 4.0, 4.1, 4.1.1, and 5.0, check **Override Gates** and set the DD gate values as indicated.
- c. Select **Start**, name and save the .rbx file, and begin data acquisition. The Run Protocol pop-up screen will appear. Click **Eject/Retract** to eject the plate carrier.

Acquire Data

1. Shake the assay plate at **850 ± 50 rpm** for **30 sec**, and visually inspect the plate to ensure that the assay wells are filled with buffer. Slowly remove the sealing tape and any plate cover before placing the plate on the plate carrier.

2. Run Protocol — on the pop-up screen, select **Load Plate** and click **OK** to start acquiring data.
3. Use the **Wash Between Plates**  command after every plate run to reduce the possibility of clogging the instrument.
4. If acquiring data from more than one plate, empty the waste bottle and refill the sheath bottle after each plate (if HTF are not present). Select Wash Between Plates and follow the instructions. Then repeat the Prepare Protocol and Acquire Data instructions.
5. When data acquisition is complete, select **Shut Down**  and follow the instructions.

Reacquire Data

It is possible to acquire data from a well or plate a second time using the **Rerun/Recovery** mode located below Start in the Run Protocol step. Any previous data will be overwritten.

1. Check the wells from which data will be reacquired.
2. Aspirate the buffer with the wash method of choice, but do not perform wash step.
3. Add **100 µl** of assay buffer to each well. Cover the plate with a new sheet of sealing tape.
4. Repeat the **Acquire Data** steps to reacquire data. The data acquired should be similar to those acquired initially; however, the acquisition time will be extended because the wells have fewer beads.

Data Analysis

Quality Controls

If the quality controls were run in the assay plate, open the results (.rbx) file, click on **Report Table**, and locate the control wells. Compare the observed concentrations against the lot-specific control ranges in the product data sheet.

Note: Expected control ranges are provided for reference and should be used as general guidelines. Actual results may vary for some operators. If the controls do not fall within the expected ranges, please refer to the troubleshooting section for possible causes and solutions.

Removing Outliers

Outliers are identified as standard data points that do not meet accuracy or precision requirements and should be considered invalid when performing curve fitting. As such, they should be removed to generate a more realistic and accurate standard curve. This may result in an extended assay working range and allow quantitation of samples that might otherwise be considered out of range.

In Bio-Plex Manager software version 6.0 and higher, outliers can be automatically removed by selecting the **Optimize** button in the Standard Curve window. In Bio-Plex Manager software 6.0 and earlier versions, outliers can be manually selected in the Report Table. Visit online Help to learn more about the standard curve optimizer feature and how outliers are determined.

Previous Versions of Bio-Plex Manager Software

For instructions on using previous versions of Bio-Plex Manager software, please contact Bio-Rad Technical Support.

In Depth Data Analysis

To better understand your data's biological significance, consider using Bio-Plex Data Pro™ software, which makes data management and comparison easier. This software offers various graphing options and automatic calculations with simple, conservative statistical calculations.

Contact your local Bio-Rad representative for more information.

Luminex xPONENT Software

Luminex xPONENT software may be used to analyze Bio-Plex assays. Although guidelines are provided here, consult the xPONENT software manual for more details. Perform a system initialization with Luminex's calibration and performance verification kit, as directed by Luminex. Select **Batches** to set up the protocol and follow the information under Settings.

Note: The instrument settings described below apply to Luminex 100/200 and FLEXMAP or Bio-Plex 3D instruments. For the Bio-Plex MAGPIX reader, use the default instrument settings.

1. Select MagPlex as the bead type for magnetic beads. This automatically sets the DD gates.
2. Volume = 50 μ l.
3. Refer to Table 11 to select the appropriate PMT setting for your instrument.
4. Plate name: 96-well plate.
5. Analysis type: Quantitative, 5PL Curve Fit.
6. Number of standards: 8.

Select **Analytes** to set up the panel.

1. Enter "ng/ml" in the Units field.
2. Enter 50 in the Count field.
3. Select the bead region and enter the analyte name.
4. Click **Apply all** for Units and Count.

Select **Stds and Ctrl.**

1. Enter standard concentrations, lot number, dilution factor, and other information as applicable.

After the assay is complete, select **Results**, then select **Saved Batches**.

Troubleshooting Guide

This troubleshooting guide addresses problems that may be encountered with Bio-Plex Pro™ assays. If you experience any of the problems listed below, review the possible causes and solutions provided. Poor assay performance may also be due to the Bio-Plex® suspension array reader. To eliminate this possibility, use the validation kit to assist in determining if the array reader is functioning properly.

Possible Causes

High Inter-Assay CV

Standards and controls were not reconstituted consistently between assays

Reconstituted standards, controls, and diluted samples were not stored properly

Bottom of filter plate not dry

Possible Solutions

Incubate the reconstituted standards for 30 min on ice. Always be consistent with the incubation time and temperature.

Reconstituted standards and diluted samples should be prepared on ice as instructed. Prior to plating, the reconstituted standards and diluted samples should be equilibrated to room temperature.

Dry the bottom of the filter plate with absorbent paper towel (preferably lint-free) to prevent cross-well contamination.

Possible Causes

High Intra-Assay CV

Improper pipetting technique

Reagents and assay components not equilibrated to room temperature prior to pipetting

Contamination with wash buffer during wash steps

Slow pipetting of samples and reagents across the plate

Possible Solutions

Pipet carefully when adding standards, controls, samples, detection antibodies, and streptavidin-PE, especially when using a multichannel pipet. Use a calibrated pipet. Change pipet tip after every volume transfer.

All reagents and assay components should be equilibrated to room temperature prior to pipetting.

During the wash steps, be careful not to splash wash buffer from one well to another. Be sure that the wells are filtered completely and that no residual volume remains. Ensure that the microplate shaker setting is not too high. Reduce the microplate shaker speed to minimize splashing

Sample pipetting across the entire plate should take less than 4 min. Reagent pipetting across the entire plate should take less than 1 min.

Possible Causes

Low Bead Count

Miscalculation of bead dilution

Beads clumped in multiplex bead stock tube

Vacuum on for too long when aspirating buffer from wells

Assay plate not shaken enough during incubation steps and prior to reading

Reader is clogged

Incorrect needle height of the reader

Low Signal or Poor Sensitivity

Standards reconstituted incorrectly

Detection antibody or streptavidin-PE diluted incorrectly

Possible Solutions

Check your calculations and be careful to add the correct volumes.

Vortex for 30 sec at medium speed before aliquoting beads.

Do not apply vacuum to the filter plate for longer than 10 sec after the buffer is completely drained from each well.

Shake the plate at 850 ± 50 rpm during incubation steps and for 30 sec immediately before reading the plate.

Refer to the troubleshooting guide in the Bio-Plex® system hardware instruction manual (bulletin #10005042).

Adjust the needle height to coincide with the plate type provided in the kit.

Follow the instructions carefully.

Check your calculations and be careful to add the correct volumes.

Possible Causes

High Background Signal

Incorrect buffer was used
(for example, assay buffer used
to dilute standards)

Accidentally spiked blank wells

Detection antibodies or
streptavidin-PE incubated too long

Poor Recovery

Expired Bio-Plex reagents
were used

Incorrect amounts of components
were added

Microplate shaker set to an
incorrect speed

High end saturation of the
standard curve

Quality controls do not fall within
expected ranges.

Possible Solutions

Use isotyping diluent to dilute
standards.

Do not add any antigens to the
blank wells.

Follow the procedure incubation
time precisely.

Check that reagents have not expired.
Use new or nonexpired components.

Check your calculations and be
careful to add the correct volumes.

Check the microplate shaker speed
and use the recommended setting.
Setting the speed too high may
cause splashing and contamination.
Use the recommended plate shaker.

Make sure that correct shaker speed
and incubation times are used.
Remove S1 for data analysis if needed.

Make sure that the vial of controls
is reconstituted at the same time as
standards and in the same diluent.
Incubate for precisely 30 min.

Possible Causes

Poor Recovery

Improper pipetting technique

Impact of Sample Matrix

Negative MFI values in samples or standards

Poor precision in serum and plasma sample measurements

Possible Solutions

Pipet carefully when adding standards, samples, detection antibodies, and streptavidin-PE, especially when using a multichannel pipet. Use a calibrated pipet. Change pipet tip after every volume transfer.

If samples contain little or no analyte, negative values observed may be due to statistical variation. If assay drift is suspected, retest the samples by positioning them next to the standards. If contamination of standards is suspected, check the standard replicate value and be careful when adding samples to the wells. Matrix effects could also produce negative sample values.

Bio-Plex Manager™ software automatically subtracts the blank (B) FI value from all other assay wells. While this has no impact on observed concentrations of samples within the assay working range, it may result in a negative FI value if the blank's FI value is greater than either the standard or the sample value. If this is undesirable, then reformat the blank wells as sample (X) or control (C) in the protocol or results file.

Check if any interfering components such as heparin-based anticoagulant, additives, or gel from separators were introduced into the samples. Avoid using hemolyzed and heavily lipemic samples. Remove visible particulate in samples by centrifugation. Avoid multiple freeze-thaw cycles of samples.

Plate Layout Template

12								
11								
10								
9								
8								
7								
6								
5								
4								
3								
2								
1								
	A	B	C	D	E	F	G	H

Calculation Worksheet

If using either a **premixed panel or one singleplex assay**, follow these directions.

Plan the plate layout and enter the number of wells to be used in the assay: _____
1

1. Determine the volume of 1x coupled beads needed.

a. Each well requires 50 μl of coupled beads (1x): _____ x 50 μl = _____ μl
1 2

b. Include 20% excess to ensure enough volume: _____ μl x 0.20 = _____ μl
2 3

c. Total volume of 1x coupled beads: _____ μl + _____ μl = _____ μl
2 3 4

d. Volume of **20x coupled beads** required: _____ $\mu\text{l}/20$ = _____ μl
4 5

e. Volume of **assay buffer** required: _____ μl - _____ μl = _____ μl
4 5 6

2. Determine the volume of 1x detection antibody needed.

a. Each well requires 25 μl detection antibodies (1x): _____ x 25 μl = _____ μl
1 7

b. Include 25% excess to ensure enough volume: _____ μl x 0.25 = _____ μl
7 8

c. Total volume of 1x detection antibodies: _____ μl + _____ μl = _____ μl
7 8 9

d. Volume of **20x detection antibodies** required: _____ $\mu\text{l}/20$ = _____ μl
9 10

e. Volume of **detection antibody diluent** required: _____ μl - _____ μl = _____ μl
9 10 11

3. Determine the volume of 1x streptavidin-PE needed.

a. Each well requires 50 μl streptavidin-PE (1x): _____ x 50 μl = _____ μl
1 10

b. Include 25% excess to ensure enough volume: _____ μl x 0.25 = _____ μl
10 11

c. Total volume of 1x streptavidin-PE: _____ μl + _____ μl = _____ μl
10 11 12

d. Volume of **100x streptavidin-PE** required: _____ $\mu\text{l}/100$ = _____ μl
12 13

e. Volume of **assay buffer** required: _____ μl - _____ μl = _____ μl
12 13 14

Safety Considerations

Eye protection and gloves are recommended when using these products. Consult the MSDS for additional information. The Bio-Plex Pro™ assays contain components of animal origin. This material should be handled as if capable of transmitting infectious agents. Use universal precautions. These components should be handled at Biosafety Level 2 containment as defined by U.S. government publication, *Biosafety in Microbiological and Biomedical Laboratories* (Centers for Disease Control, 1999).

Legal Notices

Acrodisc and Supor are trademarks of Pall Corporation. MagPlex, xMAP, xPONENT, and Luminex are trademarks of Luminex Corporation.

The Bio-Plex® suspension array system includes fluorescently labeled microspheres and instrumentation licensed to Bio-Rad Laboratories, Inc. by the Luminex Corporation.

Ordering Information

Detailed ordering information can be found at www.bio-rad.com/bio-plex.

Catalog #	Premixed All-In-One Multiplex Kit
	Premixed multiplex kit includes coupled magnetic beads, detection antibodies, standards, 1-level quality controls, detection antibody diluent, isotyping diluent (for use with samples, standards, and controls), assay buffer, wash buffer, streptavidin-PE, 96-well flat bottom plate, sealing tape, assay quick guide, and product data sheet
171-A3100M	Bio-Plex Pro Human Isotyping Panel , 6-plex, 1 x 96-well, for the detection of IgG1, IgG2, IgG3, IgG4, IgA, IgM
Catalog #	All-In-One Singleplex Kits
	Singleplex kits are specific for each assay indicated below and include coupled magnetic beads, detection antibodies, standards, 1-level quality controls, detection antibody diluent, isotyping diluent (for use with samples, standards, and controls), assay buffer, wash buffer, streptavidin-PE, 96-well flat bottom plate, sealing tape, assay quick guide, and product data sheet
171-A3101M	Bio-Plex Pro Human IgA Isotyping Assay
171-A3102M	Bio-Plex Pro Human IgE Isotyping Assay
171-A3104M	Bio-Plex Pro Human IgM Isotyping Assay
171-A3103M	Bio-Plex Pro Human IgG Total Isotyping Assay
Catalog #	Wash Stations and Accessories
300-34376	Bio-Plex Pro Wash Station , includes magnetic plate carrier, waste bottle, 2 buffer bottles
300-34377	Bio-Plex Pro II Wash Station , includes magnetic plate carrier, vacuum manifold plate carrier, waste bottle, 2 buffer bottles
171-025001	Bio-Plex Pro Flat Bottom Plates , 40 x 96-well plates
171-304500	Bio-Plex Wash Buffer , 1.5 L
171-304502	Filter plate , pkg of 1, 96-well plate with clear plastic lid and tray, for Bio-Plex assays using the vacuum wash method, sealing tape not included
171-020100	Bio-Plex Handheld Magnetic Washer , includes magnetic washer and adjustment hex tools for use in manual wash steps for all Bio-Plex magnetic assays
Catalog #	Software
171-001513	Bio-Plex Data Pro Software (5 seats) , for multi-experiment analysis and advanced data visualization
171-001523	Bio-Plex Data Pro Plus Software , contains all the features of Bio-Plex Data Pro software with added visualization, sharing, and analysis functionality
171-STND01	Bio-Plex Manager Software (1 seat) Standard Edition , for instrument data evaluation and optimization

BIO-RAD

**Bio-Rad
Laboratories, Inc.**



*Life Science
Group*

Web site www.bio-rad.com **USA** 800 424 6723 **Australia** 61 2 9914 2800
Austria 01 877 89 01 **Belgium** 09 385 55 11 **Brazil** 55 11 5044 5699
Canada 905 364 3435 **China** 86 21 6169 8500
Czech Republic 420 241 430 532 **Denmark** 44 52 10 00
Finland 09 804 22 00 **France** 01 47 95 69 65 **Germany** 089 31 884 0
Greece 30 210 9532 220 **Hong Kong** 852 2789 3300
Hungary 36 1 459 6100 **India** 91 124 4029300 **Israel** 03 963 6050
Italy 39 02 216091 **Japan** 03 6361 7000 **Korea** 82 2 3473 4460
Mexico 52 555 488 7670 **The Netherlands** 0318 540666
New Zealand 64 9 415 2280 **Norway** 23 38 41 30
Poland 48 22 331 99 99 **Portugal** 351 21 472 7700
Russia 7 495 721 14 04 **Singapore** 65 6415 3188
South Africa 27 861 246 723 **Spain** 34 91 590 5200
Sweden 08 555 12700 **Switzerland** 026 674 55 05
Taiwan 886 2 2578 7189 **Thailand** 800 88 22 88
United Kingdom 020 8328 2000