

Molecular Imager® Gel Doc™ XR+ Installation Guide

To install your Gel Doc XR+, perform these seven steps in the following order:

1. Unpack the Gel Doc XR+ system.
2. Install Image Lab™ software.
3. Set up the universal hood.
4. Install the camera.
5. Connect the cables.
6. Load the camera driver.
7. Calibrate the system.



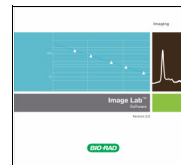
1 Unpack the Gel Doc XR+ System

The Gel Doc XR+ system arrives in multiple containers labeled with several part numbers. The universal hood and the parts pictured below are all you need to assemble and calibrate your system.

Part No.	Gel Doc XR+ System Components for Windows/Mac (170-8195)	Component Pictures
170-8199	Gel Doc XR+ Installation Kit contains this installation guide, the Image Lab software CD, the standard filter, the white Lens Flat Field Calibration disc, a Focus Calibration Target, and a system label	
170-8180	Universal hood (includes an accessory box, with 6 ft. and 10 ft. USB cables, power cord, and thumbscrew)	
170-8181	Gel Doc XR+ camera (includes camera with attached lens and power supply)	

2 Install Image Lab Software

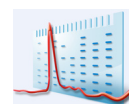
Before assembling your Gel Doc XR+ system, install Image Lab software on the computer you intend to use with the system. You must be in the “administrator” user group to install software.



Windows

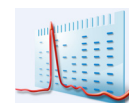
1. Place the Image Lab software CD into a CD drive. The installation should start automatically. If not, open “My Computer” and click your CD drive icon.
2. Double-click *setup.exe* to install the software.

The Image Lab software icon appears on your desktop. There is no need to start the software now. Instead, follow the instructions below to assemble and calibrate your system.



Macintosh

1. Insert the Image Lab software CD into a CD drive.
2. Double-click the CD icon on your desktop to see the folder contents.
3. Double-click the *Image Lab.dmg* file.
4. Drag the Image Lab application icon into the Applications folder.



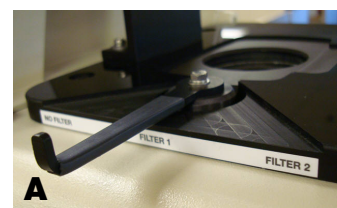
There is no need to start the software now. Instead, follow the instructions below to assemble and calibrate your system.

3 Set Up the Universal Hood

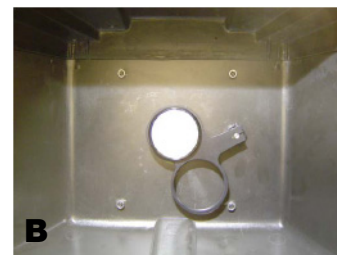
The components from the universal hood accessory box and the hood itself are everything you need to assemble the universal hood.

1. Lift the top lid and the cardboard sides off the main box. Carefully lift the universal hood from the bottom foam, and place it on a workbench. Level the hood by adjusting the rubber feet, if necessary.

CAUTION: The universal hood should be carried by at least two people, holding the instrument from the bottom. Be sure that the door and drawer are completely closed before lifting.



2. The filter slider on the right side of the camera support (A) aligns the filter with the hole on top of the hood. There are three selectable filter positions. Move the filter selector so that it is in the Filter 1 position.
3. Open the hood door. Locate the standard filter (170-8081) in the Installation Kit. While looking up into the hood (B), thread the filter clockwise onto the ring that is currently centered under the hole.



4 Install the Camera

Now you will need the camera, power supply, and thumbscrew.

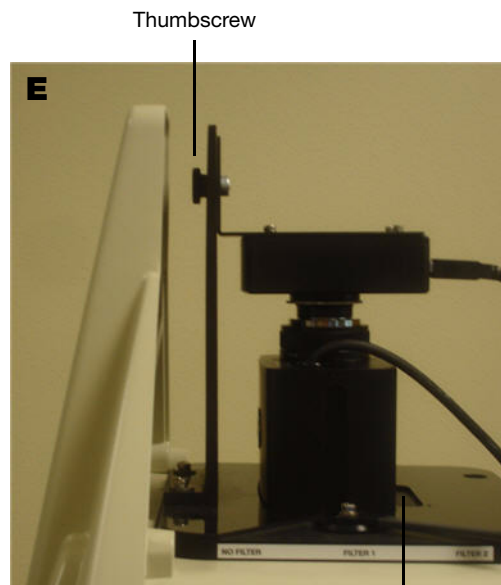
1. Place the camera on the bench sideways as shown (C), and remove the lens cap. Screw the thumbscrew onto the camera bracket two or three turns.
2. Lift the camera to the top of the universal hood and slide the thumbscrew through the slot in the vertical camera bracket (D). This orients the camera so the camera lens can be centered in the gasket.
3. Make sure that the camera lens is upright and seated on the gasket (E). Tighten the thumbscrew.
4. There is an adhesive-backed label with the name of your camera system in the Installation Kit. Read the label sheet instructions to see where and how to place the label on the universal hood. Placing this label on your system makes it easy for you to tell Technical Support which type of camera you are using, should you ever require assistance.



Thumbscrew



Thumbscrew in
vertical slot of
the camera bracket



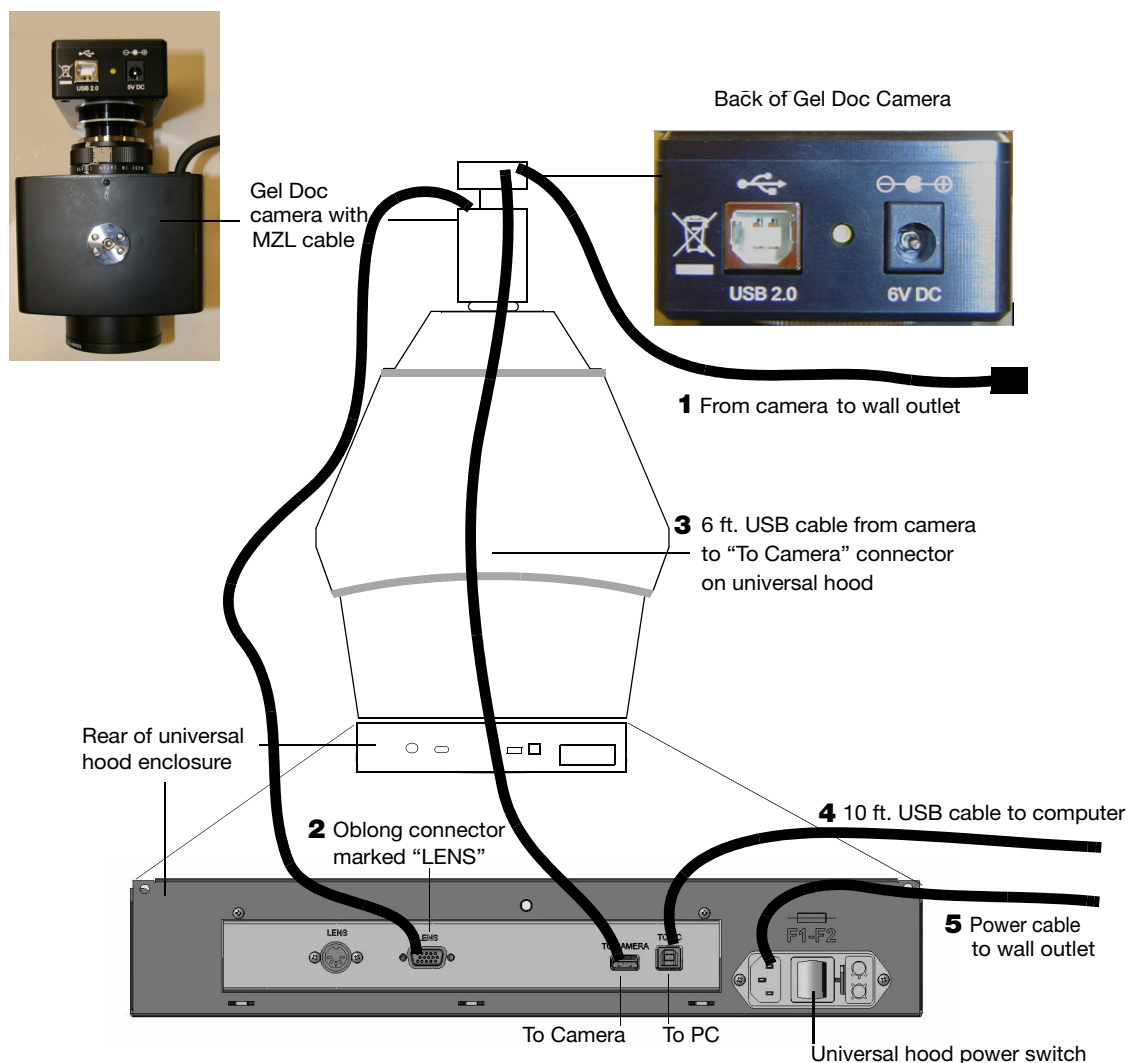
Gasket

5 Connect the Cables

You'll find the cables in the universal hood accessory box.

CAUTION: Do not turn the system on until the Image Lab software is installed and all cables are connected. Be sure the power source is grounded and is protected by a circuit breaker.

1. Plug the camera power cable into the camera power supply connector labeled "6V DC," and the other end to a wall outlet.
2. Connect the motorized zoom lens (MZL) cable connector to the rear panel oblong connector labeled "LENS" on the universal hood.
3. Connect one end of the 6 ft. USB cable to the USB port labeled "USB 2.0" on the camera. Connect the other end to the port on the rear panel of the universal hood labeled "TO CAMERA".
4. Connect the 10 ft. USB cable from the universal hood connector labeled "TO PC" to the computer.
5. Connect the main power cable to the rear of the universal hood power module and then to a wall power outlet.



6 Install the Camera Drivers

NOTE: Do not launch your Image Lab software until this process is complete.

Once the camera is plugged in, and the universal hood power switch is turned on, (refer to the drawing on page 4 for its location) a computer running Windows will detect the camera, and display a “Found New Hardware Wizard” screen. If your computer has Windows XP installed, the following screens will display. If your computer runs Vista or Windows 7, see the screens on page 7. (Macintosh driver installation requires no intervention.)

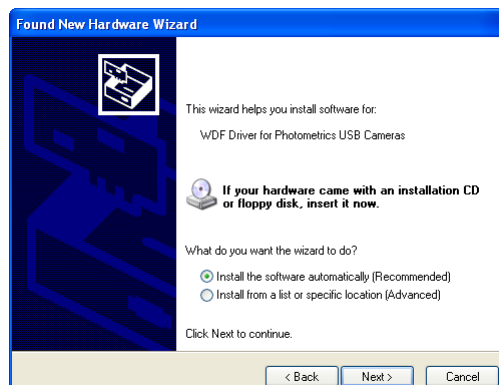
Windows XP

The wizard starts at a welcome screen. Follow these steps to install the camera driver.

1. Click “No, not this time,” and then click “Next” to continue.



2. Select “Install software automatically,” and then click “Next” to continue.



3. Click “Continue Anyway,” Windows will install the first camera driver. Click on the “Finish” button when it appears.

A message appears briefly on the lower right corner of the screen indicating “Your new hardware is ready to use.” The wizard starts again, this time to install the second driver.



- Click “No, not this time,” and then click “Next” to continue.



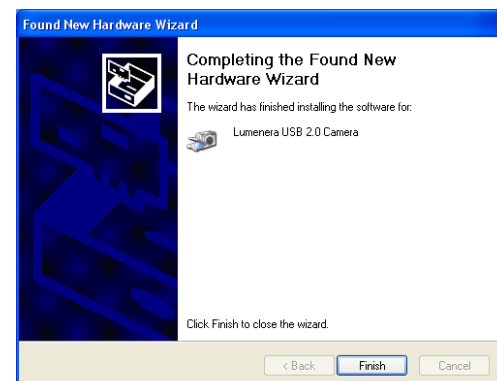
- Select “Install software automatically,” and then click “Next” to continue.



- Click “Continue Anyway,” Windows will install the second camera driver.

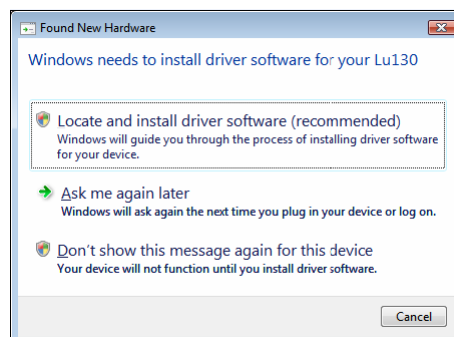


- Click on the “Finish” button when it appears.

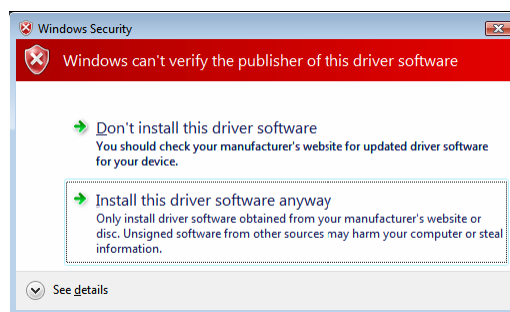


Windows Vista

1. After the power is turned on, the PC will automatically recognize the imager, and this screen prompts you to install the drivers. Click “Locate and install driver software.” Vista finds the drivers automatically.



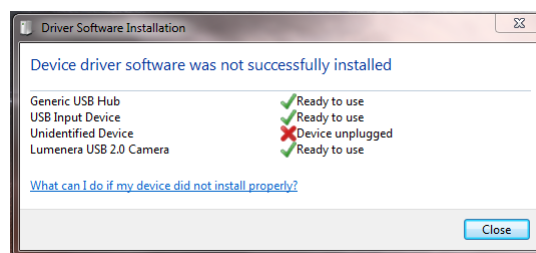
2. You may see this screen. If you do, click “Install this driver software anyway.” The drivers will be installed.
3. Click on the Finish button when it appears. A message appears briefly on the lower right corner of the screen indicating “Your new hardware is ready to use.”



NOTE: Windows Vista may prompt you to go through the driver installation a second time. If this happens, repeat steps 1 through 3, until you receive a “Your new hardware is ready to use” message.

Windows 7

During the installation process you may see the following warning. This warning can be ignored, because it appears even when the driver has been installed correctly.

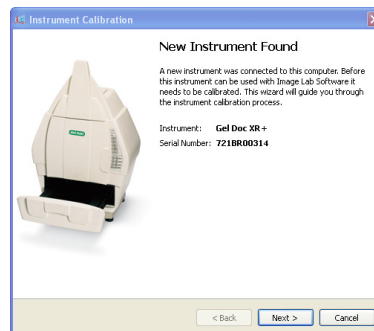


7 Calibrate the System

The Instrument Calibration wizard performs several procedures required to calibrate your system, based on the illumination sources and accessories you choose. Once these calibrations are performed, your image focus remains correct, whether you view an entire sample or a small section of a gel or blot. While some of these calibrations can be skipped, performing calibrations for all accessories that you have is required for accurate results.

The Instrument Calibration wizard appears automatically when a Gel Doc XR+ system is detected the first time. The wizard need only be used once, as your system is installed. The calibrations remain valid over the life of the instrument.

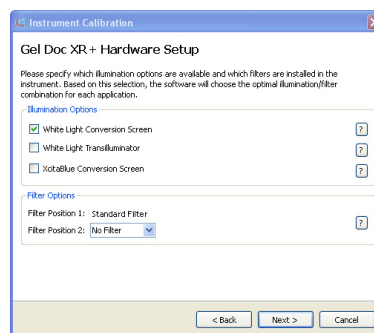
1. Start Image Lab software by clicking on the desktop software icon. (If your system runs a Macintosh operating system, open your Applications Folder to click on the software icon.) The New Instrument Found screen displays the system name and serial number. Click “Next” to continue.



2. Specify all accessory illumination options and any optional filter you have installed in the instrument.

If you aren't sure which illumination options you have, click on the question mark buttons to the right of each option. You will see an illustration and part number of each option.

There is also a dropdown list of filter options. The question mark to the right of filter options includes application information and part numbers. Choose the filter you have installed in the universal hood.

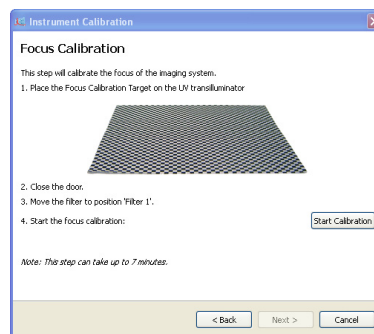


3. Click “Next” to continue.

The illumination and filter options you have chosen will determine which calibration screens are presented in the wizard.

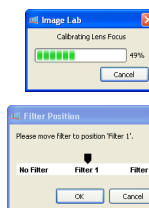
4. Perform the steps on the Focus Calibration screen to calibrate your system focus.

NOTE: This step may take up to seven minutes.



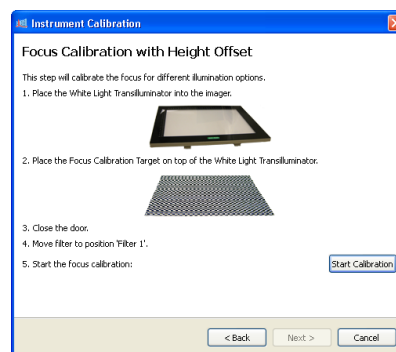
As the system is calibrating, various screens display that help track your progress.

The wizard also tells you which filter selection to use as you proceed through the various steps.

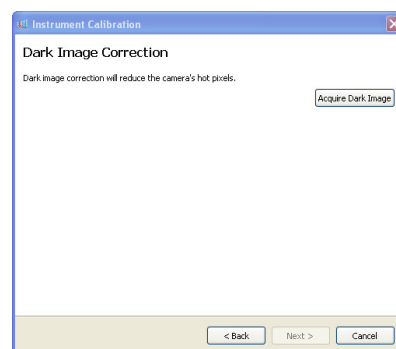


If any illumination option was selected in step 2, the tallest option displays in the Focus Calibration with Height Offset screen. The focus height for the other options are interpolated by the software.

5. Place the indicated illumination option and then the Focus Calibration Target in the imager. After following the listed steps, click the “Start Calibration” button.



6. This step acquires a dark image correction image, which is required to reduce the background intensity in your images.

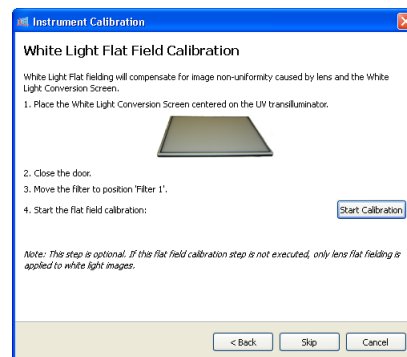


7. The Lens Flat Field calibration corrects for the non-uniformity inherent in any lens. This requires a special Lens Flat Field Calibration disc to be installed in filter position 2. Once this is installed, click “Start Calibration.”

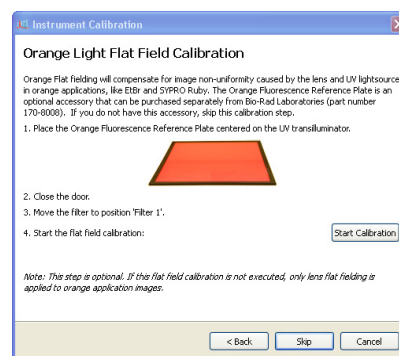
NOTE: After completing this step, remove the Lens Flat Field Calibration disc and replace the filter normally in position 2, if any.



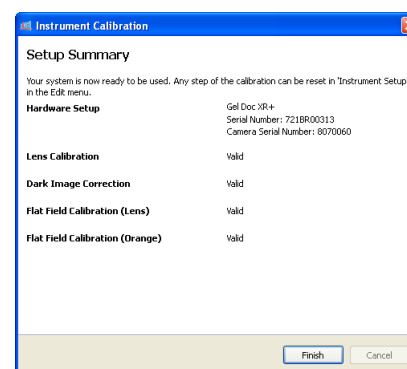
8. This calibration only displays if you have selected the White Light Conversion Screen in Step 2. Perform the steps listed on the screen, then click the “Start Calibration” button. The wizard prompts you to move the correct filter into position. When you select “OK,” the system performs the calibration.



9. The Orange Light Flat Field calibration corrects for the distortion inherent in a UV light source, when using orange light applications like EtBr and SYPRO Ruby. If you do not have this accessory, skip this calibration.



10. The last screen of the wizard displays a setup summary which indicates which options have been calibrated.



The Instrument Calibration wizard is only used during system installation. Click on “Instrument Setup” under the Edit menu to display your calibrations. These calibrations need not be changed unless you add accessories, such as a new light source. Recalibrate your system to use any new accessories by using the Instrument Setup screen.

Now that your Gel Doc XR+ system is unpacked, assembled, and calibrated, refer to the instruction manual (10017218) on the software CD for detailed instructions to operate the system.

Mac and Macintosh are trademarks of Apple Inc. Windows XP, Windows 7, and Windows Vista are trademarks of Microsoft Corporation.



**Bio-Rad
Laboratories, Inc.**

*Life Science
Group*

Web site www.bio-rad.com **USA** 800 4BIORAD **Australia** 61 02 9914 2800 **Austria** 01 877 89 01 **Belgium** 09 385 55 11 **Brazil** 55 21 3237 9400
Canada 905 364 3435 **China** 86 21 6426 0808 **Czech Republic** 420 241 430 532 **Denmark** 44 52 10 00 **Finland** 09 804 22 00 **France** 01 47 95 69 65
Germany 089 318 84 0 **Greece** 30 210 777 4396 **Hong Kong** 852 2789 3300 **Hungary** 36 1 455 8800 **India** 91 124 4029300 **Israel** 03 963 6050
Italy 39 02 216091 **Japan** 03 6361 7000 **Korea** 82 2 3473 4460 **Mexico** 52 555 488 7670 **The Netherlands** 0318 540666 **New Zealand** 0508 805 500
Norway 23 38 41 30 **Poland** 48 22 331 99 99 **Portugal** 351 21 472 7700 **Russia** 7 495 721 14 04 **Singapore** 65 6415 3188 **South Africa** 27 861 246 723
Spain 34 91 590 5200 **Sweden** 08 555 12700 **Switzerland** 061 717 95 55 **Taiwan** 886 2 2578 7189 **United Kingdom** 020 8328 2000