

InteliQ Quick Reference Guide for Beckman Coulter AU 5800 and DxC 700 AU analyzers

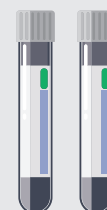
The Smart QC choice for Beckman Coulter AU series chemistry analyzers.

For First set-up/ New lot



1. QC Product Set-up

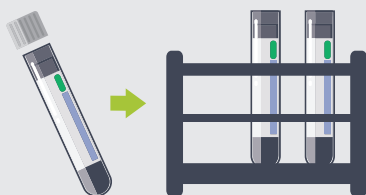
Program and set up the new control file on your chemistry systems for InteliQ controls



2. QC Product Set-up

Place **Supplemental barcode labels** on tube

Daily QC process : 3 Steps

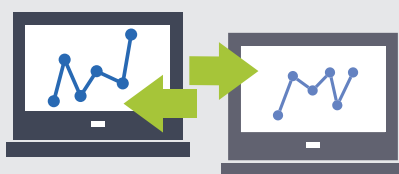


1. Load

Load uncapped InteliQ tubes directly onto your DxC 700 AU and AU series instruments using QC rack.

Simply load, and go!

No manual preparation steps



2. Run QC & Compare Data

Access Unity Data Management program.

Compare results with labs worldwide



3. Store

Recap and store InteliQ controls back in Refrigerator

1. QC Setup and Panel Programming¹

Controls Screen

Program a maximum of 100 controls required for specific tests. Control numbers 1 to 100 are programmed to a Type (Serum, Urine, Other-1, or Other-2) by Beckman Coulter determined by laboratory requirements.

Detailed Procedure for AU 5800 Series:

Select **Menu List > Parameters > QC Parameters > Controls**

Detailed Procedure for DxC 700 AU:

Select **CONFIG. > QC Setup > Controls**

QC Parameters: Controls Screen for AU 5800 Series

Parameters		QC Parameters					
Controls		QC Specific					
<input type="checkbox"/> Barcode Operation							
No.	Cup Position	Type	Name	Control ID	Lot No.	Expiration	Multi Rock
1	0001-01	Serum	All Control 1				No
2	0001-02	Serum	All Control 2				No
3	0001-03	Serum					No
4	0001-04	Serum					No
5	0001-05	Serum					No
6	0001-06	Serum					No
7	0001-07	Serum					No
8	0001-08	Serum					No
9	0001-09	Serum					No
10	0001-10	Serum					No
11	0002-01	Serum					No
12	0002-02	Serum					No
13	0002-03	Serum					No
14	0002-04	Serum					No
15	0002-05	Serum					No

QC Setup: Controls tab for DxC 700 AU

<< Quality Control > QC Setup						
Chart		Twin Plot Chart		QC Setup		
Controls		Check	Preset	Cumulative		
<input type="checkbox"/> Bar Code Operation						
No.	Cup Position	Type	Name	Control ID	Lot No.	Expiration
1		Serum	Biorad Liquicheck 1	0000010511	16641	11/30/2016
2		Serum	Biorad Liquicheck 2	0000010512	16642	11/30/2016
3		Serum	Biorad Lipid 1	0000010513	57251	09/30/2016
4		Serum	Biorad Lipid 2	0000010514	57252	09/30/2016
5		Serum	Biorad Immuno 1	0000011515	40251	02/28/2017
6		Serum	Biorad Immuno 3	0000011516	40253	02/28/2017
7		Serum				
8		Serum				
9		Serum				
10		Serum				
11		Serum				
12		Serum				

¹ AU5800 reference manual, Section 2-44/DxC 700 AU reference manual, section 2-43

1.1. Bar code label set up

- **Select 'Barcode operation' on QC set up screen:** If you select 'Bar Code Operation', the system assigns control IDs to control materials, and you can place controls in **any position in the green rack**. If 'Bar Code Operation' is cleared, you have to program and assign controls to positions in the green rack.
- You can place IntelliQ barcoded controls in the designated green racks and "load-and-go" for streamlined processing.

Quality Control > QC Setup

Chart Twin Plot Chart **QC Setup**

Controls Check Preset Cumulative

Bar Code Operation

No.	Cup Position	Type	Name	ID	Lot No.	Expiration
1		Serum	Biorad Liquicheck 1	0000010511	10041	11/30/2016

1.2. Controls Set-up Description

Item	Contents	Input Notes
Bar Code Operation	Selected or Cleared	If you select Bar Code Operation , the system assigns control IDs to control materials, and you can place controls in any position in the green rack or STAT table. If Bar Code Operation is cleared, you assign controls to positions in the green rack or STAT table.
Cup Position	Cup Position	Display only If you select Bar Code Operation , nothing displays. If Bar Code Operation is cleared, the system displays the cup positions on the rack.
Type	Sample Type	Display only The system displays the sample type (Serum, Urine, Other-1, Other-2, or Whole Blood).
Name	Control Name	A maximum of 20 characters
ID	Control ID (Bar Code)	When you select Bar Code Operation , a maximum of 26 alphanumeric characters for the control ID.
Lot No.	Control Lot Number	A maximum of 15 alphanumeric characters
Expiration	Control Expiration Date	Enter a date

1.3. Set up the InteliQ Control Barcode ID on DxC 700 AU & AU 5800 Series

1. On Main Menu, Select << Configuration Parameters > System Condition > Analysis Mode

DxC 700 AU
10/05/2022 13:06:00

<< Configuration Parameters > System Condition > Analysis Mode

Analysis Mode | System Setup | Program the Logon | Comment Master | User Menu

[Test Order] [Auto Rerun] [S.ID Bar Code] <Editing>

Routine Bar Code Rack Enabled Bar Code Type MULTI CODE
Emergency Bar Code STAT Enabled Digits 0
Check Mode No (No Chk.Chr.)

Sequential Sample ID Read [Event Sound] [Others]

Announce None Default Type Serum
Caution Caution_001 System Action for Reagent Empty Event Only
Warning Warning_001

[Rack ID Limit]

Routine	9999			
Emergency	9999			

Save F1 | Event Sound F5

Start | Pause | Stop Feeder | Stop | STANDBY | Printer | LIS | PROService | Start STAT

USER MENU | ERROR MESSAGES | EVENT DETAILS | NOTEPAD

- Inspect Analyzer Status
- Analyzer Daily Maintenance Perform Routine Inspections
- Monitor Reagent Status Perform Reagent Volumn Check
- Inspect ISE Reagents Review Number of Tests and Stability
- ISE Daily Maintenance Clean and Calibrate the ISE
- Order and Perform Calibration from Racks
- Review Calibration Data Recent and History
- Order and Perform QC from Racks
- Review QC Data Charts
- Monitor Results Status, Time to Completion, Flags

2. On [SID Barcode], select Bar Code Type to 'MULTI CODE' from dropdown list

DxC 700 AU
10/05/2022 13:07:07

<< Configuration Parameters > System Condition > Analysis Mode

Analysis Mode | System Setup | Program the Logon | Comment Master | User Menu

[Test Order] [Auto Rerun] [S.ID Bar Code] <Editing>

Routine Bar Code Rack Enabled Bar Code Type MULTI CODE
Emergency Bar Code STAT Enabled Digits NW-7
Check Mode CODE39
MULTI CODE
INT 2of5
ISBT 128

Sequential Sample ID Read [Event Sound] [Others]

Announce None Default Type Serum
Caution Caution_001 System Action for Reagent Empty Event Only
Warning Warning_001

[Rack ID Limit]

Routine	9999			
Emergency	9999			

Save F1 | Event Sound F5

Start | Pause | Stop Feeder | Stop | STANDBY | Printer | LIS | PROService | Start STAT

USER MENU | ERROR MESSAGES | EVENT DETAILS | NOTEPAD

- Inspect Analyzer Status
- Analyzer Daily Maintenance Perform Routine Inspections
- Monitor Reagent Status Perform Reagent Volumn Check
- Inspect ISE Reagents Review Number of Tests and Stability
- ISE Daily Maintenance Clean and Calibrate the ISE
- Order and Perform Calibration from Racks
- Review Calibration Data Recent and History
- Order and Perform QC from Racks

3. Select Digit to '0'

4. Select Check Mode to 'No (No Chk Chr)'

Comment Master		User Menu	
[S.ID Bar Code]		<Editing>	
Bar Code Type	MULTI CODE	▼	
Digits	0		
Check Mode	No (No Chk.Chr.)	▼	

1.4. Program default QC panel of test:

QC panel definition of tests that are ordered at the same time for each control ID eliminating the need to requests individual tests each time QC is run.

2. Load

Load InteliQ QC on the Green QC rack and run sample



**Bio-Rad
Laboratories, Inc.**

*For further information, please contact the Bio-Rad office nearest you
or visit our website at www.bio-rad.com/qualitycontrol*

*Clinical
Diagnostics Group*

Website www.bio-rad.com/diagnostics **U.S.** 1-800-224-6723 **Australia** +61(2)9914-2800 **Austria** +43-1-877-8901 **Belgium** +32(3)710-53-00 **Brazil** +55(31)3689-6600
Canada 1-514-334-4372 **China** +86 21 6169 8500 **Czech Republic** +420-241-430-532 **Denmark** +45-4452-1000 **Finland** +358-9-804-22-00 **France** +33-1-47-95-60-00
Germany +49(0)89-318-840 **Greece** +30-210-7774396 **Hong Kong** +852-2789-3300 **Hungary** +36-1-459-6100 **India** +1800-180-1224 **Israel** +972-3-9636050 **Italy** +39-02-216091
Japan +81-3-6361-7070 **Korea** +82-2-3473-4460 **Mexico** +52(55)5488-7670 **The Netherlands** +31-318-540666 **New Zealand** +64-9-415-2280 **Norway** +47-23-38-41-30
Poland +48-22-3319999 **Portugal** +351-21-472-7700 **Russia** +7-495-721-1404 **Singapore** +65-6415-3170 **South Africa** +27-11-442-85-08 **Spain** +34-91-590-5200
Sweden +46-8-555-127-00 **Switzerland** +41(0)26-674-55-05/06 **Taiwan** +886-2-2578-7189 **Thailand** +662-651-8311 **United Kingdom** +44(0)20-8328-2000