



## TANGO **infinity** Fully Automated System for Microplate Technology



# TANGO infinity

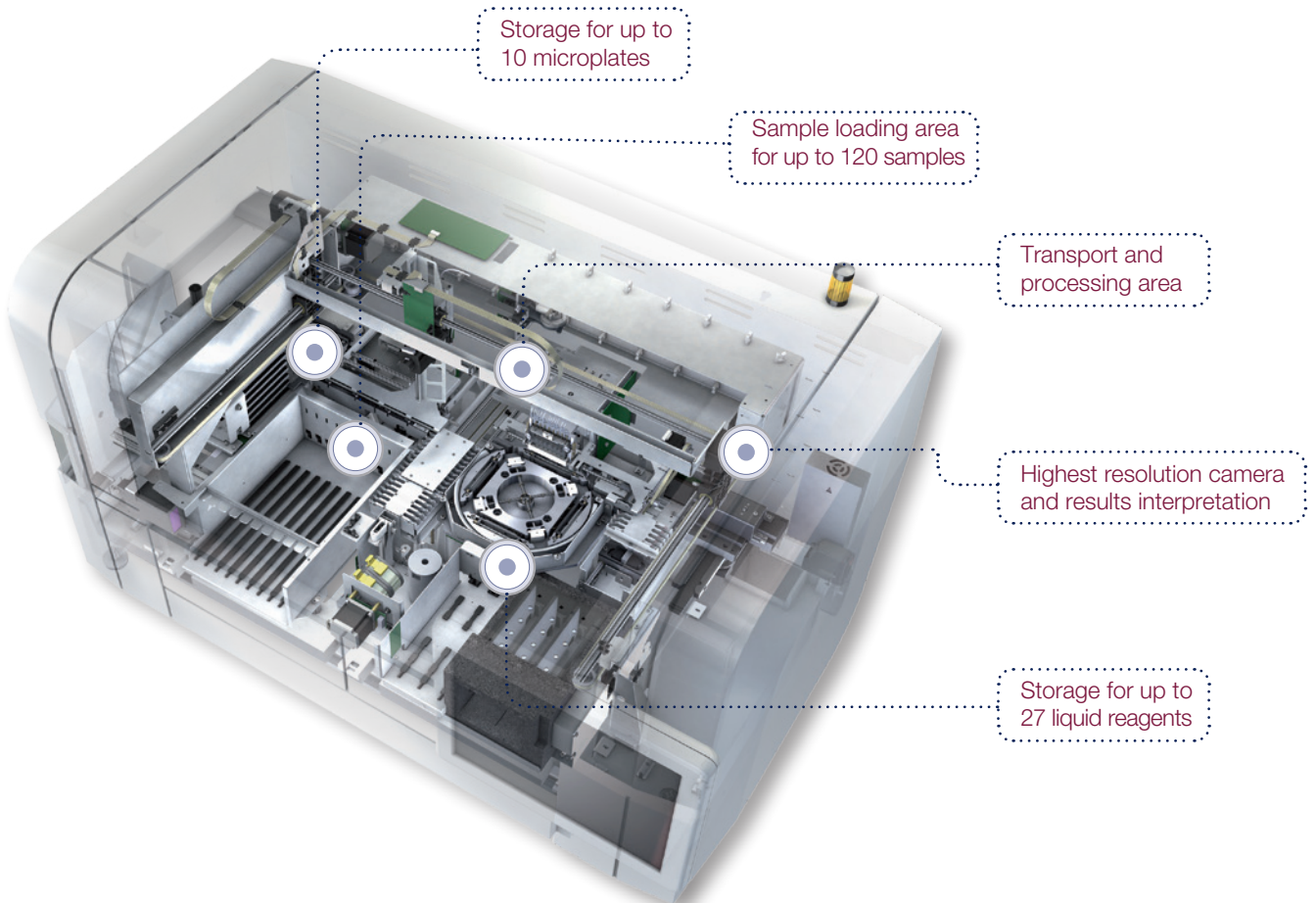
## Reach Full Potential



TANGO **infinity** is a compact and fully automated immunochemistry bench-top system.

TANGO **infinity** enables almost hands-off operation and provides the highest level of intelligent automation and security due to proven solid phase and hemagglutination technology, state-of-the-art components and software.

- Highest level of security
- Highest level of convenience
- Highest level of flexibility
- Proven technology



## No Easier Way to Manage the Day

- No set-up time because resources are on board
- 24/7 system availability to run samples
- True 24 hr STAT due to stand-by function
- Continuous access to load or unload samples
- Daily care under 10 minutes
- Customized sample grouping optimizes test processing
- Skips over samples for which reagents are missing; reschedules them when reagents are replenished



TANGO infinity instrument

## High Capacity Storage of Resources for Multiple Assay Options

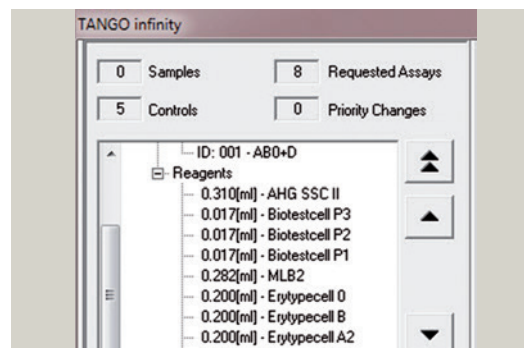
- 120 samples storage for all common tube sizes
- 27 liquid reagents storage
- 10 microplates storage (10x12x8 = 960 wells)
- Only a few seconds to load and start a centrifuged sample



Sample and reagent racks

## Easy to Learn and Teach

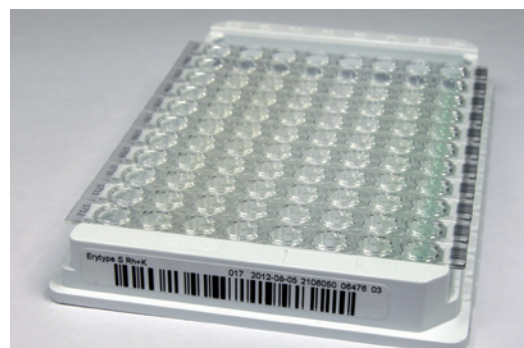
- Intuitive software with user-friendly touchscreen monitor
- Process steps follow manual workflow
- Process/SOP oriented user manual with on-line search function
- Tips, flags and system assistance signals



Intuitive, informative software

## Economical Reagent Management

- Designed to avoid strip and reagent waste
- If 2 bottles of the same reagent are on board, the reagent with the shortest shelf-life will be used first
- QC only once daily and with lot changes

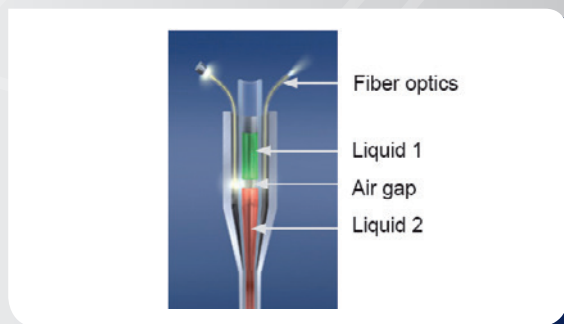


Microplate with 12 strips

## Security Due to SPOLV\*

Measures precisely both the aspirated and the dispensed volume of each pipetted liquid as well as the total volume of the assay (triple check)

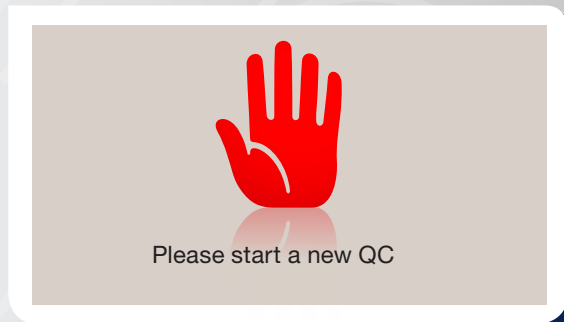
\* SPOLV = Syringe, Pipettor, Optical Liquid Verification.



SPOLV pipettor needle

## Security Due to Integrated QC

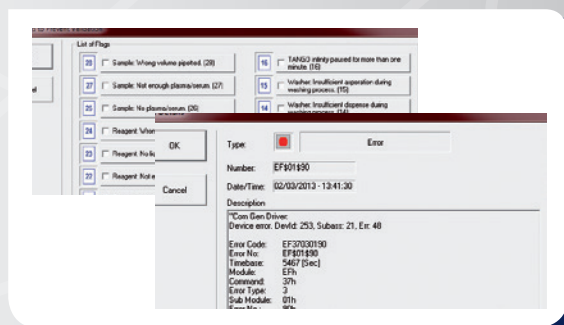
- Fully automated on board QC management
- New reagent lots trigger a reminder to run a QC



Warning message "new reagent lot"

## Security Due to Controls and Full Traceability

- Controlled processes and full traceability of users, reagents and all events
- Database management for up to 15,000 patient records
- Flags for unexpected events
- 4 levels of user rights and automatic log-out after validation
- Automatic check with previous results



Unexpected results messages

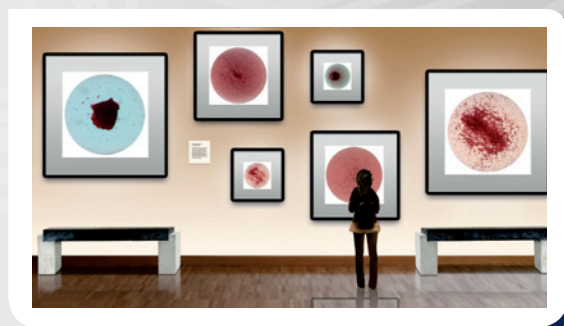
## Security Due to Proven Reagent Methodology

- Erytype S, Solidscreen II and associated liquid reagents have been used since 2000 in Europe
- Erytype S, Solidscreen II and associated liquid reagents have been FDA approved since 2005



## Security Due to Brilliantly Clear Images

- State-of-the-art highest definition camera
- Zoom function for expanded images



Well results images



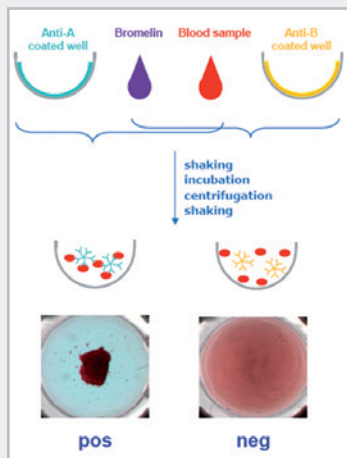
# Proven Erytype S and Solidscreen II Methodology

- Fully automated
- Requires only 50 µl of sample plasma per microwell
- Blood grouping ABO/D
- ABO serum reverse testing
- Phenotyping Rh/K
- D typing - including weak D
- Direct AHG test (DAT)
- Crossmatching
- Antibody screening with 2, 3 or pool cells
- Antibody identification with 8 or 11 cell panels



Additional module available:  
**IH-Com**

## Erytype S Test Principle



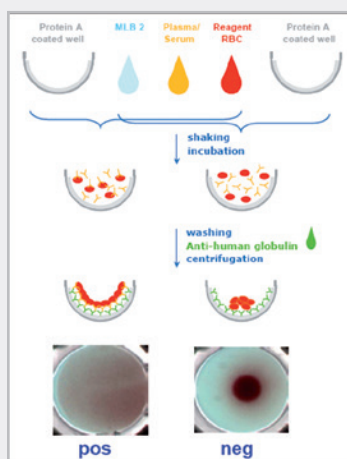
Traditional hemagglutination method

## TANGO infinity automatically:

- Selects a stored, ready-to-use microplate to match the test ordered. Erytype S plates are coated with dried monoclonal antisera
- Prepares a suspension of red blood cells (RBCs) in Bromelin
- Pipettes RBCs suspended in Bromelin into the microwells causing the pre-coated antisera in the microwells to dissolve
- Incubates at room temperature and during this time an antigen-antibody reaction may occur
- Centrifuges, then gently shakes the microplate strip to resuspend negative reactions. Hemagglutinates fall to the bottom of the well
- Takes high definition color images and interprets the results

A user with "Validator" access rights validates the result

## Solidscreen II Test Principle



Solid phase method e.g. for antibody screening

## TANGO infinity automatically:

- Selects a stored, on board, ready-to-use microplate to match the test ordered. Solidscreen II plates are pre-coated with Protein A
- Pipettes sample plasma, MLB2 and Reagent RBCs into the Protein A coated microplate wells
- Incubates at 37°C and during this time an antigen-antibody reaction may occur
- Washes Solidscreen II strips with Washing Solution, then adds Anti-Human Globulin
- Centrifuges strips
- Takes high definition color images and interprets the results

A user with "Validator" access rights validates the result

## Specifications

### Electrical Data

Voltage	100-240 VAC
Power fluctuation	± 10%
Transient overvoltage	UPS unit included
Frequency	50-60 Hz
Power consumption	400 VA

### Environmental Conditions

Operating temperature	+18°C to 28°C (64°F to 82°F)
Operating humidity	10% to 85% rh
Altitude maximum	2,000 m (6,562 ft.)

### Dimensions

Width	135 cm (53 in)
Height (incl. status light)	90 cm (36 in)
Depth	72 cm (29 in)
Required bench depth	55-67 cm (22-26 in)
Weight	165 kg (363 lbs)

### Capacity

Samples	120
Microplates	10/120 strips with 8 wells
Liquid reagents	27 (15 in cool storage)

### Emissions

Heat emission	max. 300 W
Noise level	max. 65 dB
Pollution level	2

## Main Features

- Compact bench-top analyzer
- Fully automates all routine immunohematology tests
- High capacity reagent storage - 7 days
- No set-up time - 24 hour/7 day availability
- Immediate STAT handling
- Minimal hands-on time
- Continuous loading
- Customized sample processing
- Proven microplate technology
- Fully automated on board QC management
- QC reminder with lot changes
- Triple volume check by SPOLV pipettor
- Multiple user rights & password protection
- Controlled processes & full traceability
- Sample or batch validation
- Only one connection to the LIS through **IH-Com**
- CE compliant, according to IVD Directive 98/79/EC

## Ordering Information

Catalog #	Description
850 000 010	<b>TANGO infinity</b>
009000	<b>IH-Com Kit Fullversion</b>

Visit [www.bio-rad.com/immunohematology](http://www.bio-rad.com/immunohematology) for more information.



The following trademarks in this document are trademarks of Bio-Rad Laboratories in some jurisdictions:

TANGO infinity  
Erytype S  
Solidscreen II

**BIO-RAD**

**Bio-Rad  
Laboratories**

*Clinical  
Diagnostics Group*

**Website** [www.bio-rad.com/diagnostics](http://www.bio-rad.com/diagnostics) **Australia** 61-2-9914-2800 **Austria** 43-1-877-8901 **Belgium** +32 (3)710-53-00 **Brazil** +55 (31)3689-6600 **Canada** 1-514-334-4372 **China** 86-21-61698500 **Czech Republic** 420-241-430-532 **Denmark** +45-4452-1000 **Finland** 358-9-804-22-00 **France** 33-1-47-95-60-00 **Germany** +49 (0)89-318-840 **Greece** 30-210-7774396 **Hong Kong** 852-2789-3300 **Hungary** +36-1-459-6100 **India** 1800-180-1224 **Israel** 972-3-9636050 **Italy** +39-02-216091 **Japan** 81-3-6361-7070 **Korea** 82-2-3473-4460 **Mexico** +52 (55)5488-7670 **The Netherlands** +31-318-540666 **New Zealand** 64-9-415-2280 **Norway** +47-23-38-41-30 **Poland** 48-22-3319999 **Portugal** 351-21-472-7700 **Russia** +7-495-721-1404 **Singapore** 65-6415-3170 **South Africa** 27-11-442-85-08 **Spain** 34-91-590-5200 **Sweden** 46-8-555-127-00 **Switzerland** +41 (0)26-674-55-05/06 **Taiwan** 886-2-2578-7189 **Thailand** 662-651-8311 **United Kingdom** +44 (0)20-8328-2000

