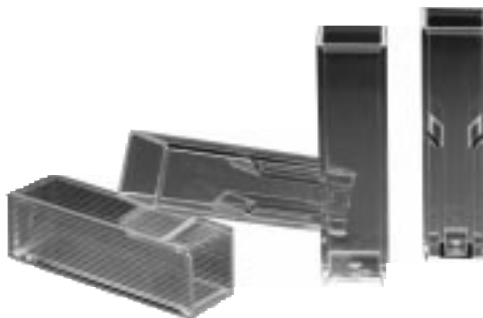




Disposable Cuvettes

**Visible Range, 800-340 nm
Standard and Semi-micro,
for use with Bio-Rad
Protein Assay Kits**



For Technical Service
Call Your Local Bio-Rad Office or
in the U.S. Call **1-800-4BIORAD**
(1-800-424-6723)

BIO-RAD



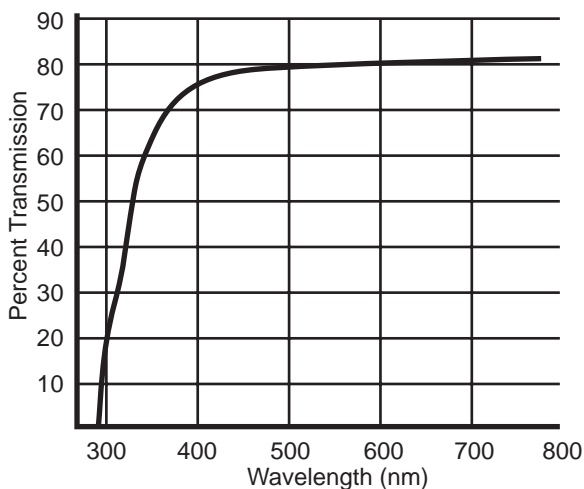
Introduction

Why use expensive glass or quartz cuvettes for many applications, such as protein assay, where you can use excellent quality, disposable polystyrene cuvettes? Bio-Rad's cuvettes fit virtually all spectrophotometer standard cuvette holders, including Beckman®, Gilford®, Hatachi, Perkin-Elmer, Varian, and Zeiss.

- Excellent specifications
- Fit most spectrophotometers
- Delivery from stock
- Inexpensive
- Unconditionally guaranteed by Bio-Rad

Specifications

Energy levels	≥ 80% T at 800 nm ≥ 55% T at 340 nm
Transmission matching	± 1%
Path length matching	± 0.5%
Path length	1 cm
Material	Premium grade virgin polystyrene
Dimensions	12.5 mm square x 45 mm high
Capacity	
Standard	3.5 ml
Semi-micro	1.5 ml



The performance specifications were obtained using a Perkin-Elmer UV/VIS spectrophotometer (scanning double-beam instrument plus output device) with empty cuvettes versus air path and no modifications to 'improve' results.

Disposable Cuvettes for Protein Assays

Bio-Rad's disposable cuvettes adsorb less Coomassie blue dye than glass cuvettes, and much less than quartz. We recommend the standard cuvettes for use with the Bio-Rad Protein Assay (based on the Bradford method) and the Bio-Rad *DC* (detergent-compatible) Protein Assay Kits. The cuvettes can be used as mixing vessels, eliminating messy transfer and clean-up steps between sample measurements. In addition, the volume of reagents can be cut in half, yielding twice as many assays per kit. (For additional information on protein assays, request bulletin 1069.)

The low cost of matched cuvettes allows the use of one cuvette for each sample. This eliminates time consuming, repetitive transfer of samples to spectrophotometer cells.

While optical surfaces are precisely smooth to yield the performance indicated, non-optical walls are grooved from top to bottom to provide an easy grip and quick orientation, and to discourage accidental fingerprinting of optical surfaces or misorientation in machines.



Cuvettes are packaged 100 per tray. Each dust proof styrofoam tray has its own lid and is packed in a locking carton for shipment. In this way you never need expose even one tray of cuvettes to ambient dust, as happens when one styrofoam block serves as both tray and lid in a 'sandwich' arrangement.

Ordering Information

Catalog Number	Product Description
223-9950	Disposable Polystyrene Cuvettes Standard , 3.5 ml, 100/covered, compartmented styrofoam tray
223-9955	Disposable Polystyrene Cuvettes Semi-micro , 1.5 ml, 100/covered, compartmented styrofoam tray

BIO-RAD

**Bio-Rad
Laboratories**

*Life Science
Group*

U.S. (800) 4BIORAD • **California** Ph. (510) 741-1000 • **New York**
Ph. (516) 756-2575 • **Australia** Ph. 02-805-5000 • **Austria**
Ph. (1) 877 89 01 • **Belgium** Ph. 09-385 55 11 • **Canada**
Ph. (905) 624-0713 • **China** Ph. (01) 2563148 • **France** Ph. (1) 49 60 68 34
• **Germany** Ph. 089 31884-0 • **Italy** Ph. 02-21609 1 • **Japan**
Ph. 03-3534-7515 • **Hong Kong** Ph. 7893300 • **The Netherlands**
Ph. 08385-40666 • **New Zealand** Ph. 09-443 3099 • **Singapore**
Ph. (65) 4432529 • **Spain** Ph. (91) 661 70 85 • **Sweden**
Ph. 46 (0) 735 83 00 • **Switzerland** Ph. 01-810 16 77 • **United
Kingdom** Ph. 0800 181134

SIG 093093 Printed in USA

LIT254 Rev C