

Ordering Information

Catalog

Number Product Description

Prestained Standards

- 161-0324 **Kaleidoscope Prestained Standards**, 500 μ l
- 161-0325 **Kaleidoscope Polypeptide Standards**, 500 μ l
- 161-0305 **Prestained SDS-PAGE Standards**, low range, 500 μ l
- 161-0309 **Prestained SDS-PAGE Standards**, high range, 500 μ l
- 161-0318 **Prestained SDS-PAGE Standards**, broad range, 500 μ l

Molecular Weight Standards

- 161-0304 **SDS-PAGE Standards**, low range, 200 μ l
- 161-0303 **SDS-PAGE Standards**, high range, 200 μ l
- 161-0317 **SDS-PAGE Standards**, broad range, 200 μ l
- 161-0314 **Silver Stain SDS-PAGE Standards**, low range, 200 μ l
- 161-0315 **Silver Stain SDS-PAGE Standards**, high range, 200 μ l
- 161-0306 **Biotinylated SDS-PAGE Standards**, low range, 250 μ l
- 161-0311 **Biotinylated SDS-PAGE Standards**, high range, 250 μ l
- 161-0319 **Biotinylated SDS-PAGE Standards**, broad range, 250 μ l
- 161-0320 **2-D SDS-PAGE Standards**, 500 μ l

IEF Standards

- 161-0310 **IEF Standards**, pI range 4.45-9.6, 250 μ l

Bio-Rad Laboratories, 2000 Alfred Nobel Dr., Hercules, CA 94547
510-741-1000 4006029 Rev B

Kaleidoscope Polypeptide Standards

Catalog Number
161-0325

Product shipped at room temperature.
Store at -20 °C upon arrival.

BIO-RAD

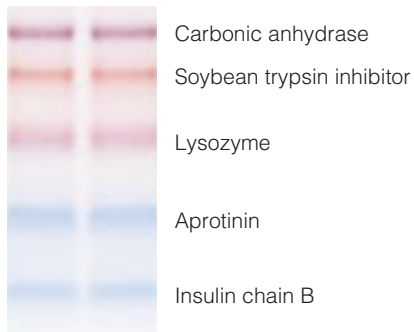


Fig. 1. Kaleidoscope Polypeptide Standards. 5 μ l of the standards were run on a 16.5% Tris-Tricine Ready Gel. The gels were run on the Mini-PROTEAN® II cell and dried using the Model 583 Gel Dryer.



Fig. 2. Kaleidoscope Polypeptide Standards. 5 μ l of the standards were run on a 16.5% Tris-Tricine Ready Gel in the Mini-PROTEAN II cell. The standards were then electrophoretically transferred to nitrocellulose using a Mini Trans-Blot® cell.

Constituent Proteins

(See enclosed insert for lot specific calibrated molecular weights.)[†]

Protein	Protein Color
Carbonic anhydrase	Violet
Soybean trypsin inhibitor	Orange
Lysozyme	Red
Aprotinin	Blue
Insulin chain B	Blue

[†] Covalently bound dye alters the molecular weight of the proteins and produces relatively broad bands. The molecular weights are calibrated from the center of each protein band.

3

Bio-Rad's Kaleidoscope Polypeptide Standards consist of five uniquely colored proteins with molecular weight range of approximately 32,000 to 3,500 daltons. Dyes have been covalently attached to the standard proteins and will not dissociate during normal staining or destaining procedures. The proteins are provided in a stable aqueous solution. No reconstitution or further dilution is required before use.

Applications

Bio-Rad's Kaleidoscope standards provide a quick and easy way to assess the quality of an electrophoretic transfer and act as a control in repetitive blotting experiments. Individual bands are easily identified by their unique colors, making it possible to monitor the separation of proteins while electrophoresis is in progress, even after the dye front has run off the gel. The standards can also be used to locate a protein for excision from an unstained preparative gel.

5

Instructions for Use

Heat the solution to 40 °C for 1 minute to dissolve any solids which may have precipitated at -20 °C. To visualize Kaleidoscope standards after blotting, load 10 µl for full size gels (16-20 cm) and 5 µl for mini gels. To visualize the standards during electrophoresis, load 20 µl for full size gels and 10 µl for mini gels. To see the standards during the run, it is helpful to hold a sheet of white paper behind the gel.

Note

The prestaining of the proteins substantially inhibits them from being further stained with biotin/avidin systems, colloidal gold, Coomassie blue R-250, or amido black. The standards can be silver stained, but silver staining will result in broad bands because of the large amount of protein in the sample.

4

Protein Molecular Weights

The molecular weights of every lot of Kaleidoscope standards are individually calibrated against Bio-Rad's SDS-PAGE Standards. The lot specific calibrated molecular weights are included with every vial. Kaleidoscope standards are useful for estimating the molecular weights of sample proteins, however, for precise molecular weight determinations, use Bio-Rad's SDS-PAGE, Silver Stain, or Biotinylated standards in addition to the prestained standards.

Specifications

Contents	Approximately 1.6 mg total protein in 33% (v/v) glycerol, 0.5% SDS, 10 mM Tris, pH 7.0, 10 mM DTT, 2 mM EDTA, 0.01% NaN ₃
Storage	-20 °C
Shelf life	1 year at -20 °C
Volume	500 µl
Applications per vial	25-100

6