



CE dsDNA 100 Base Pair Ladder

**Catalog Number
148-2019**



The CE dsDNA ladder is a mixture of 10 double-stranded sequences ranging in length from 100 bp to 1,000 bp in exact 100 bp increments. Under the conditions described here, the standard will exhibit 10 major peaks at 260 nm (see Figure 1). Pipette 20–50 μl of the CE dsDNA ladder into a 500 μl sample vial. If the sample is going to be used for multiple analysis, a drop of mineral oil can be layered carefully on top of the sample to help prevent evaporation and extend the useful life of the sample. Routinely, the 100 base pair ladder should be stored 4 °C. However, longer term storage at -20 °C may increase shelf life.

Run buffer: CE dsDNA Run Buffer, 148-5041
Capillary: BioCAP™ DNA analysis capillary, 148-3084, 24 cm
Injection: 10 kV, 3 seconds
Run conditions: 2.5 kV, 30 minutes, 40 °C

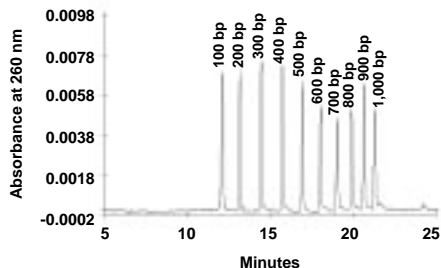


Fig. 1. Electropherogram of CE dsDNA 100 bp Ladder (catalog number 148-2019).