



Amplisize[®] Molecular Ruler

50–2,000 bp Ladder

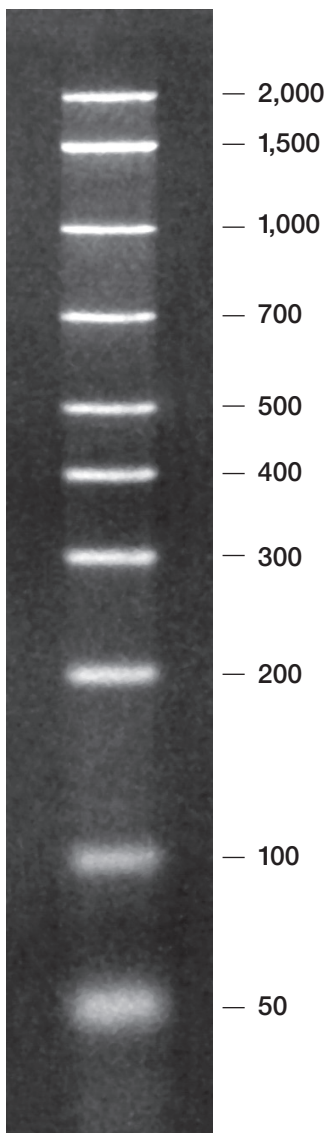
Catalog Number 170-8200

Contents	1 vial Amplisize molecular ruler, 50% GC content, 50–2,000 bp, 10 bands
Quantity	250 μ l, DNA sufficient for 50 lanes at 5 μ l per lane
Concentration	10 ng/band/ μ l
Size	10 fragments of proprietary blunt-ended DNA of precise length and known sequence: 50, 100, 200, 300, 400, 500, 700, 1,000, 1,500, and 2,000 bp
Storage	Store at 4°C
Shelf life	1 year at 4°C. Use only sterile pipet tips when removing aliquots. Introduction of nucleases will shorten shelf life.
Use	Add loading buffer to the standard prior to use to ensure correct results. Adjustments may be made to the loading volume for different well sizes or desired band intensity. 5 μ l of sample per lane is sufficient.

This standard is used to estimate molecular weights of DNA fragments separated on polyacrylamide gels or high percentage agarose gels (for example, 4% Amplisize agarose). **Use only sterile solutions, pipet tips, and tubes.** Since there is an equal amount of DNA of each size, all bands will stain equally with ethidium bromide.

For laboratory use only.

BIO-RAD



AmpliSize molecular ruler.