

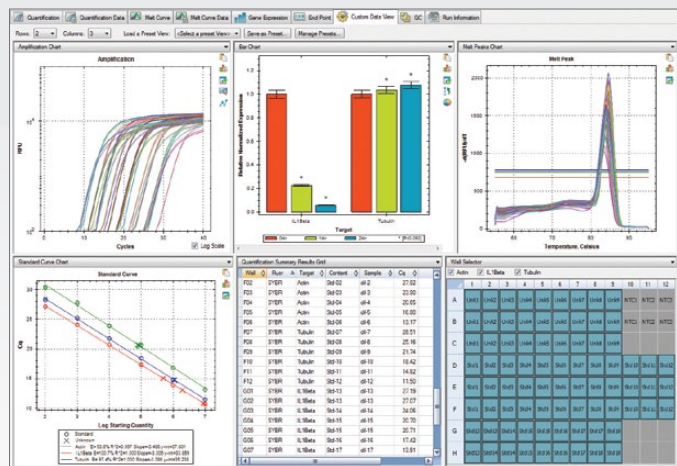


CFX Maestro™ Software

Real-Time PCR Data Collection, Analysis, and Statistics
in One Integrated Package

CFX Maestro Software is real-time PCR software that not only collects data, but understands your data and what you want to do with it, combining data collection, statistics, and publication tools into one comprehensive package. Whether you are a novice researcher running your first qPCR experiment or are analyzing thousands of samples across hundreds of plates, CFX Maestro was built with your needs in mind and to work in whatever way is best for you.

- Perform statistical analysis of data in seconds with *t*-tests and ANOVA
- Work anywhere, on a PC or a Mac
- Set up multivariate experiments and replicates easily
- Streamline selection of reference genes
- Create customized and publication-ready graphs

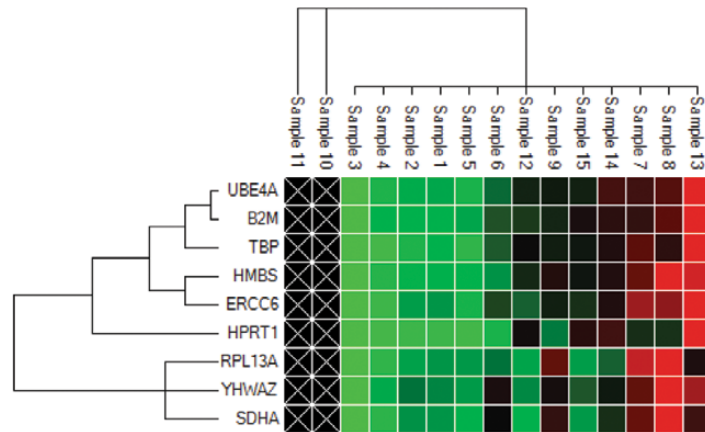


Custom data view. With custom data view, your most relevant data can be viewed and analyzed in one screen.



Perform Automatic Statistical Analysis in Seconds

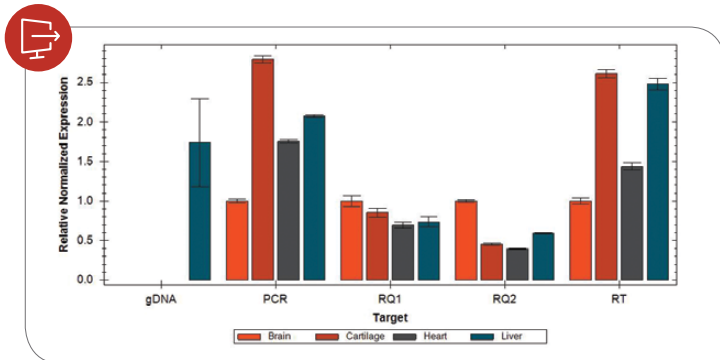
CFX Maestro Software's tools allow you to view, evaluate, and understand your data. With just a few mouse clicks you can view normalized expression levels, perform *t*-tests, or analyze your data with one- and two-way ANOVA.



Automatic data analysis. Clustergram showing gene expression levels grouped by hierarchical similarity in a 15-plate study.

Create and Export Publication-Ready Graphics

Visualize your data to suit your needs using bar charts, dot plots, box and whisker plots, and more. Change colors, fonts, titles, and legends and annotate your graphs with *P* values, text, and arrows to call out specific data. Once your data are displayed in exactly the way you want, export at any size and resolution for presentations, posters, or for publication.



Easily visualize your data and export at high resolution.

Work Anywhere, on a PC or a Mac

With CFX Maestro Software and CFX Maestro Software for Mac, both PC and Mac users can utilize the integrated data analysis, statistics, and publication tools of CFX Maestro. Work on your own computer, anywhere, without the need for an Internet connection.

PrimePCR™ Assay Integration

Want to simplify your primer design, run design, and setup? With CFX Maestro and PrimePCR Real-Time PCR Assays, it's easy. Drag and drop a PrimePCR run file into CFX Maestro to automatically populate plate setup and run conditions. Post run, ensure run quality by viewing pass/no pass results from integrated controls (positive control, RT, gDNA, and RNA quality controls).

Additional Features

- Multiple user profiles allow for easy saving of and access to custom plate setups and qPCR run data files for each user
- Reference Gene Selection Tool — CFX Maestro will calculate reference gene stability and help you select the most ideal reference genes for your experiments
- Custom data views — view all your most important run and analysis data at a glance
- qbase+ license included — perform even more detailed statistics and analysis of your data

Visit bio-rad.com/web/CFXMaestro for more information.

Ordering Information

Catalog #	Description
12004110	CFX Maestro Software
12004128	CFX Maestro Software for Mac
12005258	CFX Maestro Software, Security Edition , includes 1 license
12005259	CFX Maestro Software, Security Edition , includes 5 licenses
12005260	CFX Maestro Software, Chinese Edition
12005678	CFX Maestro Software, Russian Edition
1855195	CFX96 Touch™ Real-Time PCR Detection System
1855485	CFX384 Touch™ Real-Time PCR Detection System
1855201	CFX Connect™ Real-Time PCR Detection System
1854095	CFX96 Touch Deep Well Real-Time PCR Detection System

Bio-Rad's real-time thermal cyclers are covered by one or more of the following U.S. patents or their foreign counterparts owned by Eppendorf AG: U.S. Patent Numbers 6,767,512 and 7,074,367.

Mac is a trademark of Apple Inc.

BIO-RAD

**Bio-Rad
Laboratories, Inc.**

Life Science
Group

Web site bio-rad.com **USA** 1 800 424 6723 **Australia** 61 2 9914 2800 **Austria** 43 1 877 89 01 177 **Belgium** 32 (0)3 710 53 00 **Brazil** 55 11 3065 7550 **Canada** 1 905 364 3435 **China** 86 21 6169 8500 **Czech Republic** 420 241 430 532 **Denmark** 45 44 52 10 00 **Finland** 358 09 804 22 00 **France** 33 01 47 95 69 65 **Germany** 49 89 31 884 0 **Hong Kong** 852 2789 3300 **Hungary** 36 1 459 6100 **India** 91 124 4029300 **Israel** 972 03 963 6050 **Italy** 39 02 216091 **Japan** 81 3 6361 7000 **Korea** 82 2 3473 4460 **Mexico** 52 555 488 7670 **The Netherlands** 31 (0)318 540 666 **New Zealand** 64 9 415 2280 **Norway** 47 23 38 41 30 **Poland** 48 22 331 99 99 **Portugal** 351 21 472 7700 **Russia** 7 495 721 14 04 **Singapore** 65 6415 3188 **South Africa** 27 (0) 861 246 723 **Spain** 34 91 590 5200 **Sweden** 46 08 555 12700 **Switzerland** 41 026674 55 05 **Taiwan** 886 2 2578 7189 **Thailand** 66 2 651 8311 **United Arab Emirates** 971 4 8187300 **United Kingdom** 44 020 8328 2000

