



PROTEIN ASSAYS

DC™ Protein Assay

Quick Guide

Standard Assay



200–1,500 µg/ml

Mix reagent S with reagent A in a ratio of 20 µl:1 ml to create desired amount of reagent A'

Pipet standards or samples into test tubes or microplate

100 µl

Add reagent A'

500 µl

Mix

Add reagent B

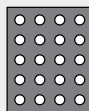
4 ml

Mix

Incubate at room temperature for a minimum of 15 min

Measure absorbance at 750 nm; color will be stable for 1 hr

Microplate Assay



200–1,500 µg/ml

5 µl

Add reagent A'

25 µl

Mix

Add reagent B

200 µl

Mix

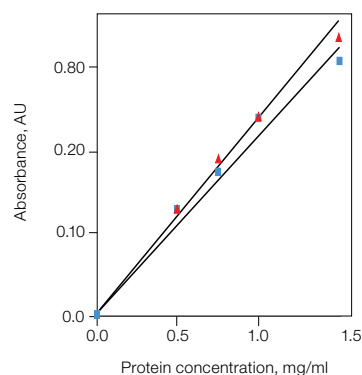
Incubate at room temperature for a minimum of 15 min

Measure absorbance at 750 nm; color will be stable for 1 hr

Setting Up a Standard Curve

Determine protein concentration by plotting the absorbance vs. concentration of known standards. Use the resulting curve to determine the concentration of unknown proteins based on their absorbance.

Note: The best standard to use is a purified sample of your target protein. If this is not available, use Bio-Rad's bovine serum albumin or bovine γ -globulin to make your standard curve.



Standard curve generation using known standards. A typical standard curve for Lowry-based assays, including DC Protein Assays. Bovine serum albumin (■); bovine γ -globulin (▲).

For Best Results

- Run a standard curve with each protein assay
- Run at least 3 replicates of all standards and samples
- Process the sample and standards the same way to ensure that differences in color intensity are due only to differences in protein concentration
- Make sure the sample and standard fall within the same concentration range

Lowry-based*; detergent compatible*

* Adapted from the method of Lowry. Lowry OH et al. (1951). Protein measurement with the Folin phenol reagent. J Biol Chem 193, 265–275.

BIO-RAD

Reagent Compatibility

The following reagents were tested for their compatibility with the protein assay. Concentrations represent maximum concentrations for standard assay. ✓ = compatible.

Reagent	Concentration
Amino acids	✓
Ammonium sulfate	0.5 M
Brij-35	1%
C12E8	0.2%
Calcium chloride	0.05 M
CHAPS	1%
CHAPSO	1%
Dithiothreitol (DTT)	0.001 M
EDTA	0.025 M
Guanidine HCl	0.4 M
HCl HCl	0.5 M
Nonidet P-40	2%
Octyl β-glucoside	1%
SDS	10%
Sodium azide	0.05%
Sodium hydroxide	0.5 M
Thesit	1%
Tris , pH 8	0.1 M
Triton X-100	1%
Tween 20	1%
Urea	4 M

Ordering Information

Catalog #	Description
5000111	DC Protein Assay Kit I , includes DC protein assay reagents package and bovine γ-globulin standard
5000112	DC Protein Assay Kit II , includes DC protein assay reagents package and bovine serum albumin standard

Microplate Reader

1681130	iMark™ Microplate Absorbance Reader
2240096	Costar 96-Well Flat-Bottom EIA Plate , 100 plates

Spectrophotometer

1702525	SmartSpec™ Plus Spectrophotometer
1702510	trUView™ Cuvettes , pkg of 50
1702511	trUView Cuvettes , pkg of 100
2239950	Standard Disposable Polystyrene Cuvettes , 3.5 ml, pkg of 100
2239955	Semimicrovolume Disposable Polystyrene Cuvettes , 1.5 ml, pkg of 100
1702502	Standard Cuvette , 1–3.5 ml, quartz
1702503	Semimicrovolume Cuvette , 0.5–1.4 ml, quartz
1702504	Microvolume Cuvette , 200–700 µl, quartz
1702505	Submicrovolume Cuvette , 80–150 µl, quartz

Visit bio-rad.com/proteinassaykits for more information.

Costar is a trademark of Corning Incorporated. Triton is a trademark of Dow Chemical Company. Tween is a trademark of ICI Americas Inc.

BIO-RAD

**Bio-Rad
Laboratories, Inc.**

Life Science
Group

Web site bio-rad.com USA 1 800 424 6723 Australia 61 2 9914 2800 Austria 43 1 877 89 01 177 Belgium 32 (0)3 710 53 00 Brazil 55 11 3065 7550
Canada 1 905 364 3435 China 86 21 6169 8500 Czech Republic 420 241 430 532 Denmark 45 44 52 10 00 Finland 358 09 804 22 00
France 33 01 47 95 69 65 Germany 49 89 31 884 0 Hong Kong 852 2789 3300 Hungary 36 1 459 6100 India 91 124 4029300
Israel 972 03 963 6050 Italy 39 02 216091 Japan 81 3 6361 7000 Korea 82 2 3473 4460 Mexico 52 555 488 7670 The Netherlands 31 (0)318 540 666
New Zealand 64 9 415 2280 Norway 47 23 38 41 30 Poland 48 22 331 99 99 Portugal 351 21 472 7700 Russia 7 495 721 14 04
Singapore 65 6415 3188 South Africa 27 (0) 861 246 723 Spain 34 91 590 5200 Sweden 46 08 555 12700 Switzerland 41 026 674 55 05
Taiwan 886 2 2578 7189 Thailand 66 662 651 8311 United Arab Emirates 971 4 8187300 United Kingdom 44 020 8328 2000

