

# CFX Automation System II Plate Queue Setup Guide

Interactive PDF  
Click arrow for video.



## Introduction

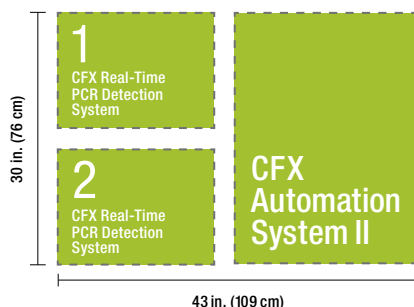
The CFX Automation System II is a robotic plate handler that works with all CFX Real-Time PCR Detection Systems to enable walk-away, high-throughput quantitative PCR (qPCR) operation in a simplified format. This system for automated PCR facilitates the generation of large volumes of data and rapid data analysis. It is ideally suited to meet the high-throughput real-time PCR requirements of today's drug discovery and screening workflows.

The intuitive automation software is designed to work specifically with CFX Systems, eliminating the need for automation system expertise. The software tracks samples with the barcode reader and integrates with laboratory information management systems (LIMS).

This guide provides hardware and software instructions for starting automation runs with the CFX Automation System II. Start an automation run in minutes.

## Hardware

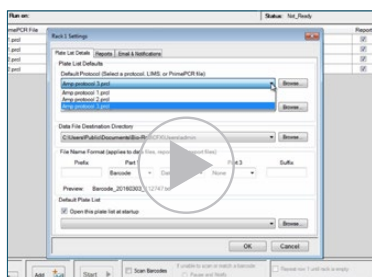
- The CFX Automation System II can accommodate up to 2 CFX Systems (any combination of 96 or 384)
- The CFX Automation System II has a small footprint (30 in. x 43 in.)



## Software

### Starting an Automation Run with Existing Protocol and Plate Files

**Advantage:** Allows the user to generate and select protocol and plate files within the integrated software (CFX Manager™ Software and CFX Automation Software). There is no need to use third-party software.

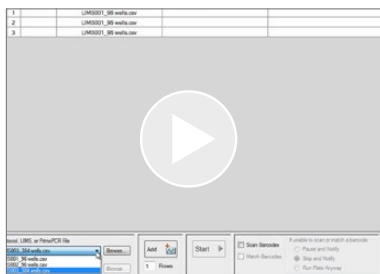


- 1 Generate the protocol and plate files.**  
Use CFX Manager Software version 3.116 or higher to generate protocol and plate files.
- 2 Select the protocol file.**  
In CFX Automation Software v2.1, use the dropdown menu or browse function to select the desired protocol file.
- 3 Select the plate file.**  
Use the dropdown menu or browse function to select the desired plate file.
- 4 Select the CFX System.**
- 5 Modify the barcode controls.**  
Select or deselect the Scan Barcodes option and Match Barcodes option.
- 6 Load the plates.**
- 7 Begin the automation run.**



## Starting an Automation Run with LIMS Files

**Advantage:** Allows the user to directly import protocol and plate files from a LIMS system.



### 1 Choose a LIMS file.

In CFX Automation Software v2.1, use the dropdown menu or browse function to choose a LIMS file. When this file is selected the plate file dropdown box will be disabled because LIMS files contain both protocol and plate information.

### 2 Select the CFX System.

### 3 Modify the barcode controls.

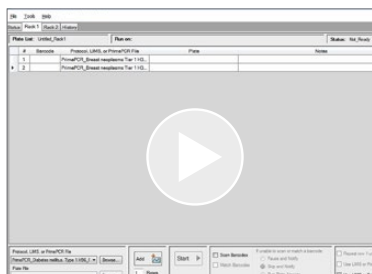
Select or deselect the Scan Barcodes option and Match Barcodes option.

### 4 Load the plates.

### 5 Begin the automation run.

## Starting an Automation Run with PrimePCR™ Files

**Advantage:** Allows the user to directly run PrimePCR files, which contain both protocol and plate information.



### 1 Choose a PrimePCR file.

In CFX Automation Software v2.1, use the dropdown menu or browse function to choose a PrimePCR file. When this file is selected the plate file dropdown box will be disabled because PrimePCR files contain both protocol and plate information.

### 2 Select the CFX System.

### 3 Modify the barcode controls.

Select or deselect the Scan Barcodes option and Match Barcodes option.

### 4 Load the PrimePCR Plates.

### 5 Begin the automation run.

Visit [bio-rad.com/web/CFXAutoSystem](http://bio-rad.com/web/CFXAutoSystem) for more information.

Bio-Rad's thermal cyclers and real-time thermal cyclers are covered by one or more of the following U.S. patents or their foreign counterparts owned by Eppendorf AG: U.S. Patent Numbers 6,767,512 and 7,074,367.

**BIO-RAD**

**Bio-Rad  
Laboratories, Inc.**

Life Science  
Group

Web site [bio-rad.com](http://bio-rad.com) USA 1 800 424 6723 Australia 61 2 9914 2800 Austria 43 1 877 89 01 177 Belgium 32 (0)3 710 53 00 Brazil 55 11 3065 7550  
Canada 1 905 364 3435 China 86 21 6169 8500 Czech Republic 420 241 430 532 Denmark 45 44 52 10 00 Finland 358 09 804 22 00  
France 33 01 47 95 69 65 Germany 49 89 31 884 0 Hong Kong 852 2789 3300 Hungary 36 1 459 6100 India 91 124 4029300  
Israel 972 03 963 6050 Italy 39 02 216091 Japan 81 3 6361 7000 Korea 82 2 3473 4460 Mexico 52 555 488 7670 The Netherlands 31 (0)318 540 666  
New Zealand 64 9 415 2280 Norway 47 23 38 41 30 Poland 48 22 331 99 99 Portugal 351 21 472 7700 Russia 7 495 721 14 04  
Singapore 65 6415 3188 South Africa 27 (0) 861 246 723 Spain 34 91 590 5200 Sweden 46 08 555 12700 Switzerland 41 026674 55 05  
Taiwan 886 2 2578 7189 Thailand 66 662 651 8311 United Arab Emirates 971 4 8187300 United Kingdom 44 020 8328 2000

