

Real-Time PCR: CFX96 Touch™ Real-Time PCR Detection System



Advancing qPCR Together

The CFX96 Touch real-time PCR detection system meets all your real-time PCR needs — whether you are running your first experiment or analyzing complex gene expression studies. With five-target detection, industry-leading stand-alone functionality, unsurpassed thermal cycler performance, and easy-to-use software, the CFX96 Touch system has been designed to advance your qPCR.

The CFX96 Touch real-time PCR detection system makes it easy for you to:

- Start doing experiments right away with factory-calibrated optics and minimal setup
- Incorporate real-time PCR into your laboratory with a compact footprint and the ability to set up runs and view data traces in real time on the integrated LCD touch screen
- Fit experiments into your schedule by shortening run times with fast thermal cycling
- Save research time by optimizing experiments in a single run using a thermal gradient
- Conserve your samples and reagents with true 5-target multiplexing and optimal quantitative results using sample volumes as low as 10 μ l

For more information, visit us on the Web at www.bio-rad.com/qpcrsystems.

BIO-RAD

Simplicity through Innovation™

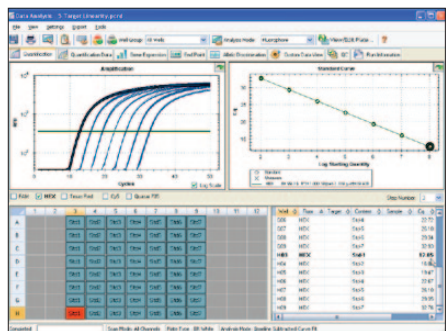
The CFX96 Touch system is built on Bio-Rad's C1000 Touch™ thermal cycler. The system incorporates innovative optical technologies with long-lasting LEDs and solid-state components to provide maximal reliability and flexibility.

- Scanning optics read each well individually with high sensitivity and no cross talk to deliver optimal quantitative results
- Multiple data acquisition modes, including a fast scan option for SYBR® Green I or EvaGreen users, let a run be tailored to suit the application
- Touch screen enables rapid run setup and viewing of data traces in real time
- Several control configurations are available for experiments — run a stand-alone system without a computer or up to 4 instruments from 1 computer

Software Solutions

CFX Manager™ software offers tools that simplify real-time PCR for every researcher. Start experiments in no time following the Startup Wizard and the intuitive experiment setup. Enter or edit well information before, during, or after a run. You can analyze data when and where you want by receiving an email with an attached data file when a run is completed. When data are in hand, use the comprehensive data analysis tools to take the guesswork out of analyzing results for any real-time PCR application.

- CFX Manager software lets you perform gene expression analysis using multiple reference genes and individual reaction efficiencies
- Precision Melt Analysis™ software lets you genotype samples based on their thermal denaturation properties
- Data can be imported into qbase^{PLUS} software for independent analysis of gene expression results with proven solutions for quality control, normalization, and inter-run calibration



CFX Manager software data analysis module.

Ordering Information

Catalog #	Description
184-5096	CFX96™ Optical Reaction Module , for use with C1000 Touch thermal cycler chassis, includes CFX Manager software, license for qbase ^{PLUS} software, communication cable, reagents, consumables
185-5196	CFX96 Touch Real-Time PCR Detection System , includes C1000 Touch thermal cycler chassis, CFX96 optical reaction module, CFX Manager software, license for qbase ^{PLUS} software, communication cable, reagents, consumables
184-5001	CFX Manager Software, Security Edition , includes 1 user license, installation CD, HASP HL key
184-5025	Precision Melt Analysis Software , includes 2 user licenses, installation CD, 2 HASP HL keys, melt calibration kit
184-5008	CFX Manager Software, Chinese Edition , includes 3 user licenses, installation CD, 3 HASP HL keys
184-5028	CFX Manager Software, Russian Edition , includes 3 user licenses, installation CD, 3 HASP HL keys
172-5200	SsoFast™ EvaGreen® Supermix , 200 x 20 µl reactions, 2x mix contains dNTPs, Sso7d fusion polymerase, MgCl ₂ , EvaGreen dye, stabilizers
172-5230	SsoFast Probes Supermix , 200 x 20 µl reactions, 2x mix contains dNTPs, Sso7d fusion polymerase, MgCl ₂ , stabilizers
HSP-9601	Hard-Shell® Thin-Wall 96-Well Skirted PCR Plates , white shell, clear well, 50
MSB-1001	Microseal® 'B' Adhesive Seals , optically clear, 100

EvaGreen is a trademark of Biotium, Inc. Bio-Rad Laboratories, Inc. is licensed by Biotium, Inc. to sell reagents containing EvaGreen dye for use in real-time PCR, for research purposes only. HASP is a trademark of Aladdin Knowledge Systems, Ltd. SYBR is a trademark of Molecular Probes, Inc.

Notice regarding Bio-Rad thermal cyclers and real-time systems:

Purchase of this instrument conveys a limited non-transferable immunity from suit for the purchaser's own internal research and development and for use in human in vitro diagnostics and all other applied fields under U.S. Patent Number 5,475,610 (Claims 1, 44, 158, 160–163, and 167 only), or corresponding claims in its non-U.S. counterpart, owned by Applera Corporation. No right is conveyed expressly, by implication, or by estoppel under any other patent claim, such as claims to apparatus, reagents, kits, or methods such as 5' nuclease methods. Further information on purchasing licenses may be obtained by contacting the Director of Licensing, Applied Biosystems, 850 Lincoln Centre Drive, Foster City, California 94404, USA.

Bio-Rad's real-time thermal cyclers are licensed real-time thermal cyclers under Applera's United States Patent Number 6,814,934 B1 for use in research, human in vitro diagnostics, and all other fields except veterinary diagnostics.

Bio-Rad's real-time thermal cyclers are covered by one or more of the following U.S. patents or their foreign counterparts owned by Eppendorf AG: U.S. Patent Numbers 6,767,512 and 7,074,367.

Practice of the patented 5' Nuclease Process requires a license from Applied Biosystems. The purchase of these products includes an immunity from suit under patents specified in the product insert to use only the amount purchased for the purchaser's own internal research when used with the separate purchase of Licensed Probe. No other patent rights are conveyed expressly, by implication, or by estoppel. Further information on purchasing licenses may be obtained from the Director of Licensing, Applied Biosystems, 850 Lincoln Centre Drive, Foster City, California 94404, USA.

Hard-Shell plates are covered by one or more of the following U.S. patents or their foreign counterparts owned by Eppendorf AG: U.S. Patent Numbers 7,347,977; 6,340,589; and 6,528,302.



BIO-RAD

**Bio-Rad
Laboratories, Inc.**

Life Science
Group

Web site www.bio-rad.com USA 800 424 6723 Australia 61 2 9914 2800 Austria 01 877 89 01 Belgium 09 385 55 11 Brazil 55 31 3689 6600
Canada 905 364 3435 China 86 21 6169 8500 Czech Republic 420 241 430 532 Denmark 44 52 10 00 Finland 09 804 22 00
France 01 47 95 69 65 Germany 089 31 884 0 Greece 30 210 777 4396 Hong Kong 852 2789 3300 Hungary 36 1 459 6100 India 91 124 4029300
Israel 03 963 6050 Italy 39 02 216091 Japan 03 6361 7000 Korea 82 2 3473 4460 Malaysia 60 3 2117 5260 Mexico 52 555 488 7670
The Netherlands 0318 540666 New Zealand 64 9 415 2280 Norway 23 38 41 30 Poland 48 22 331 99 99 Portugal 351 21 472 7700
Russia 7 495 721 14 04 Singapore 65 6415 3170 South Africa 27 861 246 723 Spain 34 91 590 5200 Sweden 08 555 12700
Switzerland 061 717 95 55 Taiwan 886 2 2578 7189 Thailand 66 2 6518311 United Kingdom 020 8328 2000