

Real-Time PCR: CFX Automation System



CFX Automation System

The CFX automation system works with the CFX96 Touch™ and CFX384 Touch™ real-time PCR detection systems to enable walk-away, high-throughput operation in a simplified format that does not compromise precision. The plug-and-go benchtop plate handler has the capacity to stack and load up to 20 PCR plates at a time. This system facilitates the automation of workflows, generation of large volumes of data, and rapid data analysis. The system is ideally suited to meet the high-throughput requirements of today's drug discovery workflows, letting you process up to 7,680 samples in a single run of twenty 384-well plates on the CFX384 Touch system.

The CFX automation system makes it easy to:

- Maximize laboratory throughput by integrating 1 CFX96 Touch or CFX384 Touch real-time PCR detection system with hands-free running of up to 20 plates
- Improve experimental workflow and automation tasks to ensure maximum productivity
- Track samples using the integrated bar code reader
- Navigate, set up, and execute multiple PCR experiments using intuitive CFX automation control software
- Define PCR protocols for an entire plate stack at once
- Receive email notification with an attached data file or report upon completion of a single run



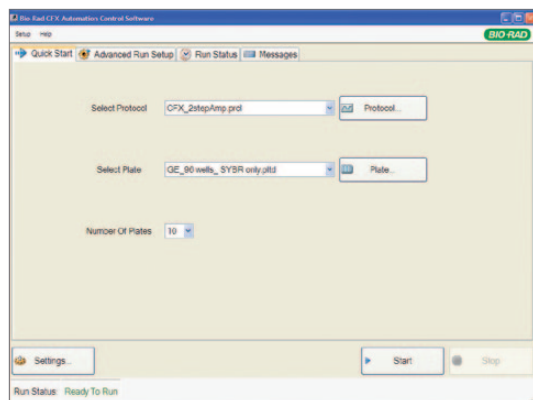
BIO-RAD

Simple Operation and Intuitive Software

CFX automation control software manages the configuration and operation of the CFX automation system with the CFX96 Touch or CFX384 Touch real-time PCR detection system, ensuring maximum productivity. The software includes Quick Start and Advanced Run Setup options to program your runs.

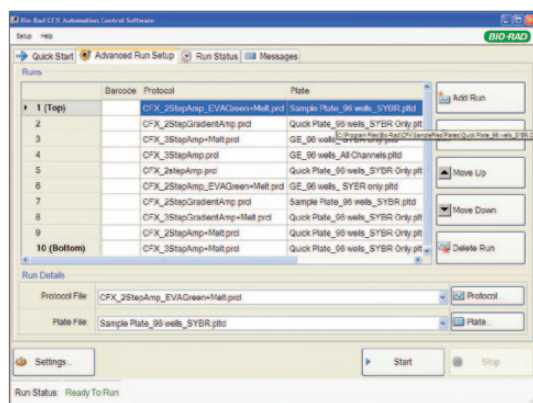
To get started using the Quick Start option:

1. Select a protocol from the pre-existing list.
2. Select a suitable plate setup.
3. Select the number of plates.
4. Click **Start** to initiate the automation run.



Quick Start window.

Use the Advanced Run Setup option to manage different protocols and plate setups within a batch run.



Advanced Run Setup window.

Ordering Information

Catalog #	Description
184-5072	CFX Automation System , includes robotic plate handler, base tray, bar code scanner, CFX automation control software CD
185-5196	CFX96 Touch Real-Time PCR Detection System , includes C1000 Touch™ thermal cycler chassis, CFX96™ optical reaction module, CFX Manager™ software, license for qbase ^{PLUS} software, communication cable, reagents, consumables
185-5484	CFX384 Touch Real-Time PCR Detection System , includes C1000 Touch thermal cycler chassis, CFX384™ optical reaction module, CFX Manager software, license for qbase ^{PLUS} software, communication cable, reagents, consumables
HSP-3905	Hard-Shell® Thin-Wall 384-Well Skirted PCR Plates , clear shell, white well, bar-coded, 50
HSP-9901	Hard-Shell Thin-Wall 96-Well Skirted PCR Plates , white shell, clear well, bar-coded, 50

Notice regarding Bio-Rad thermal cyclers and real-time systems: Purchase of this instrument conveys a limited non-transferable immunity from suit for the purchaser's own internal research and development and for use in human in vitro diagnostics and all other applied fields under one or more of U.S. Patent Numbers 5,656,493; 5,333,675; 5,475,610 (Claims 1, 44, 158, 160–163, and 167 only); and 6,703,236 (Claims 1–7 only), or corresponding claims in their non-U.S. counterparts, owned by Applied Biosystems, 850 Lincoln Centre Drive, Foster City, California 94404, USA.

Bio-Rad's real-time thermal cyclers are licensed real-time thermal cyclers under Applied Biosystems' United States Patent Number 6,814,934 B1 for use in research, human in vitro diagnostics, and all other fields except veterinary diagnostics.

Bio-Rad's real-time thermal cyclers are covered by one or more of the following U.S. patents or their foreign counterparts owned by Eppendorf AG: U.S. Patent Numbers 6,767,512 and 7,074,367.

Hard-Shell plates are covered by one or more of the following U.S. patents or their foreign counterparts owned by Eppendorf AG: U.S. Patent Numbers 7,347,977; 6,340,589; and 6,528,302.



**Bio-Rad
Laboratories, Inc.**

Life Science
Group

Web site www.bio-rad.com **USA** 800 424 6723 **Australia** 61 2 9914 2800 **Austria** 01 877 89 01 **Belgium** 09 385 55 11 **Brazil** 55 31 3689 6600
Canada 905 364 3435 **China** 86 21 6169 8500 **Czech Republic** 420 241 430 532 **Denmark** 44 52 10 00 **Finland** 09 804 22 00
France 01 47 95 69 65 **Germany** 089 31 884 0 **Greece** 30 210 777 4396 **Hong Kong** 852 2789 3300 **Hungary** 36 1 459 6100 **India** 91 124 4029300
Israel 03 963 6050 **Italy** 39 02 216091 **Japan** 03 6361 7000 **Korea** 82 2 3473 4460 **Malaysia** 60 3 2117 5260 **Mexico** 52 555 488 7670
The Netherlands 0318 540666 **New Zealand** 64 9 415 2280 **Norway** 23 38 41 30 **Poland** 48 22 331 99 99 **Portugal** 351 21 472 7700
Russia 7 495 721 14 04 **Singapore** 65 6415 3170 **South Africa** 27 861 246 723 **Spain** 34 91 590 5200 **Sweden** 08 555 12700
Switzerland 061 717 95 55 **Taiwan** 886 2 2578 7189 **Thailand** 66 2 6518311 **United Kingdom** 020 8328 2000