

Acute Phase Response

Cancer
Cardiovascular Disease
Cytokine Chemokines,
Growth Factors
Diabetes
Gene Expression
Genotyping
Immunoglobulin Isotyping
MicroRNA Expression
Signal Transduction
Toxicology

Bio-Plex Pro™ Human Acute Phase Assay Panel

MAGNETIC SEPARATION ENABLED

α -2-Macroglobulin, CRP, Ferritin, Fibrinogen, Haptoglobin, Procalcitonin, SAA, SAP, Tissue Plasminogen Activator

- Validation in serum, plasma, and tissue culture samples
- Premixed assays for convenience and reproducibility
- Magnetic or vacuum assay separation
- Contains standards and controls
- Includes targets unique to the xMAP platform

Reliable Multiplex Measurement of Nine Human Acute Phase Markers

Bio-Plex Pro human acute phase assays deliver accurate and reproducible measurements of nine commonly studied acute phase markers in serum, plasma, and tissue culture supernatant. A snapshot of panel performance is shown here as demonstrated by representative parallelism and linearity of sample dilution in normal human serum and plasma.

These assays are offered as two separate kits to achieve optimal working assay ranges. The Bio-Plex Pro human acute phase 5-plex assay requires a 100-fold sample dilution, and the Bio-Plex Pro human acute phase 4-plex assay requires a 10,000-fold sample dilution as required by the physiological ranges of the analytes. Dividing the targets into panels that require similar dilutions reduces the need to expend assay reagents on multiple dilutions of each sample.

Magnetic Bead-Based Assays

Magnetic bead-based assays allow optional magnetic separation and automation of wash steps. This innovation greatly simplifies assay processing, eliminating the need for a vacuum manifold.

Performance Characteristics

Specifications at Standard PMT Setting

Precision	
Intra-assay CV	≤15%
Inter-assay CV	≤25%
Accuracy (% recovery)	70–130%
Cross-reactivity	<0.5%
Matrices	Serum, plasma, culture supernatant, and other biological fluids

Demonstration of Parallel Standard Curves

Parallelism is a measure of the impact of matrix effect on an assay using different sample matrices. Parallel standard curves generated using matrices such as standard diluent, plasma, and serum demonstrate assay robustness in these sample types. Results are shown for the serum amyloid A (SAA) assay, a member of the Bio-Plex Pro acute phase 5-plex panel (Figure 1). Comparable results were obtained for the other targets in this panel.

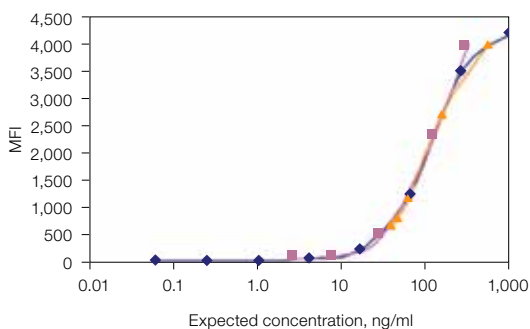


Fig. 1. Parallelism of standard curves. Results represent standard curves obtained using standard diluent (◆), human serum (■), and human plasma (▲). Result is shown for the SAA assay.

BIO-RAD

Representative Assay Ranges, Sensitivity, and Standardization

Target	Working Assay Range*	Sensitivity	Dynamic Ranges**	WHO Standard Reference #	1 IU = x ng
α-2-Macroglobulin	0.5–1,875 ng/ml	0.25 ng/ml	0.5–7,500 ng/ml	—	—
CRP	0.01–50 ng/ml	0.004 ng/ml	0.01–125 ng/ml	85/506	3.0 x 10 ⁶
Ferritin	3.05–50,000 pg/ml	1.3 pg/ml	3.05–50,000 pg/ml	—	—
Fibrinogen	5–813 ng/ml	2.8 ng/ml	1.95–32,000 ng/ml	—	—
Haptoglobin	0.1–500 ng/ml	0.07 ng/ml	0.03–500 ng/ml	—	—
Procalcitonin	14–10,000 pg/ml	11.3 pg/ml	0.61–10,000 pg/ml	—	—
SAA	1–700 ng/ml	1.1 ng/ml	0.06–1,000 ng/ml	—	—
Serum amyloid P (SAP)	0.1–250 ng/ml	0.063 ng/ml	0.02–250 ng/ml	—	—
Tissue plasminogen activator	28–5,000 pg/ml	6.15 pg/ml	0.31–5,000 pg/ml	98/714	2.4 x 10 ⁻¹

* Lower limit of quantitation–upper limit of quantitation. ** Standard curve ranges. IU, international units.

Linearity of Dilution

The Bio-Plex Pro human acute phase assays were tested for their specificity in serum and plasma samples. Serial dilutions of samples containing high levels of the target protein were performed using diluted normal human serum and plasma as diluents. Four-fold serial dilutions show a corresponding linear 4-fold reduction in concentration, demonstrating that the assays did not detect nonspecific proteins in the normal human serum. Results are shown for the C-reactive protein (CRP) assay (Figure 2). Comparable results were achieved for the other targets in this panel.

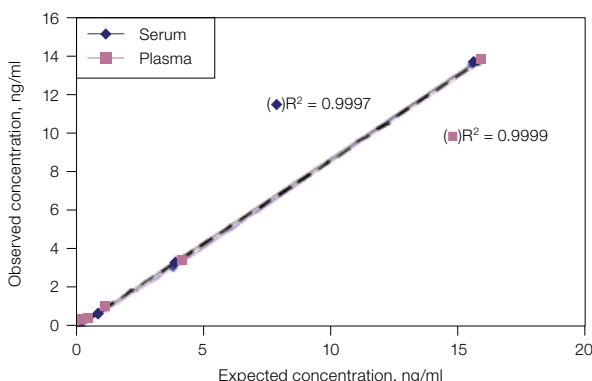


Fig. 2. Linearity of sample dilution in normal human serum and plasma. Results are shown for the Bio-Plex Pro human acute phase CRP assay.

Data Analysis

Bio-Plex Pro human acute phase assays can be analyzed using Bio-Plex Manager™ software version 4.0 and higher, as well as Luminex xPONENT and other software. When using other software, including Bio-Plex Manager 3.0 and those provided by Luminex, contact Technical Support or your Bio-Rad field applications specialist for more information.

For a current listing of Bio-Plex Pro human acute phase assays, visit us on the Web at www.bio-rad.com/bio-plex.

Ordering Information

Catalog #	Description
Bio-Plex Pro Human Acute Phase Complete Kits*	
171-A4S07M	Bio-Plex Pro Human Acute Phase 5- + 4-Plex Panel Complete Kit , 1 x 96-well
171-A4C09M	Bio-Plex Human Acute Phase 4-Plex Panel Complete Kit , 1 x 96-well
171-A4C07M	Bio-Plex Pro Human Acute Phase 5-Plex Panel Complete Kit , 1 x 96-well
Bio-Plex Pro Human Acute Phase Assay Kits**	
171-A4007M	Bio-Plex Pro Human Acute Phase 5-Plex Panel , 1 x 96-well, includes coupled beads, detection antibodies, and standards for the detection of ferritin, fibrinogen, procalcitonin, serum amyloid A, tissue plasminogen activator
171-A4008M	Bio-Plex Pro Human Acute Phase 5-Plex Panel , 10 x 96-well
171-A4009M	Bio-Plex Pro Human Acute Phase 4-Plex Panel , 1 x 96-well, includes coupled beads, detection antibodies, and standards for the detection of α-2-macroglobulin, CRP, haptoglobin, serum amyloid P
171-A4010M	Bio-Plex Pro Human Acute Phase 4-Plex Panel , 10 x 96-well
Acute Phase Reagent Kits	
171-304050	Bio-Plex Pro Human Acute Phase Reagent Kit , 1 x 96-well, includes Bio-Plex reagent kit and acute phase instruction manual
171-304051	Bio-Plex Pro Human Acute Phase Reagent Kit , 10 x 96-well
Acute Phase Diluent Kit***	
171-305050	Bio-Plex Pro Human Acute Phase Diluent Kit , 1 x 96-well, includes 15 ml serum-based diluent and 300 ml serum-free diluent

* For simplified ordering, the complete kits include the acute phase panel, acute phase reagent kit, and acute phase diluent kit.

** One acute phase reagent kit is required for use with each assay kit.

*** One acute phase diluent kit is sufficient to perform the 5-plex and the 4-plex assays.

Luminex, xPONENT, and xMAP are trademarks of the Luminex Corporation. The Bio-Plex suspension array system includes fluorescently labeled microspheres and instrumentation licensed to Bio-Rad Laboratories, Inc. by the Luminex Corporation.



BIO-RAD

**Bio-Rad
Laboratories, Inc.**

Life Science
Group

Web site www.bio-rad.com USA 800 424 6723 Australia 61 2 9914 2800 Austria 01 877 89 01 Belgium 09 385 55 11 Brazil 55 31 3689 6600
Canada 905 364 3435 China 86 21 6169 8500 Czech Republic 420 241 430 532 Denmark 44 52 10 00 Finland 09 804 22 00
France 01 47 95 69 65 Germany 089 31 884 0 Greece 30 210 777 4396 Hong Kong 852 2789 3300 Hungary 36 1 459 6100 India 91 124 4029300
Israel 03 963 6050 Italy 39 02 216091 Japan 03 6361 7000 Korea 82 2 3473 4460 Malaysia 60 3 2117 5260 Mexico 52 555 488 7670
The Netherlands 0318 540666 New Zealand 64 9 415 2280 Norway 23 38 41 30 Poland 48 22 331 99 99 Portugal 351 21 472 7700
Russia 7 495 721 14 04 Singapore 65 6415 3170 South Africa 27 861 246 723 Spain 34 91 590 5200 Sweden 08 555 12700
Switzerland 061 717 95 55 Taiwan 886 2 2578 7189 Thailand 66 2 6518311 United Kingdom 020 8328 2000