

C1000™ Thermal Cycler

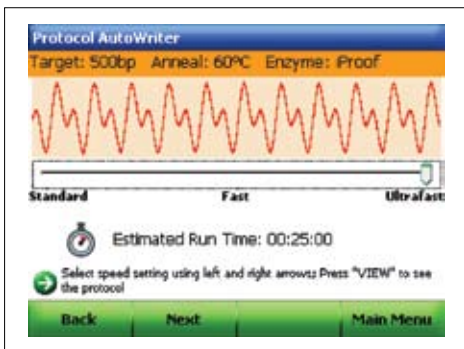
The C1000 thermal cycler provides superb thermal performance for fast, reliable results. This fully modular platform supports interchangeable reaction modules — including two optical modules for real-time PCR — that swap in seconds, without requiring tools. Equipped with a state-of-the-art interface, the C1000 cycler offers multiple programming methods, including graphical, text based, and automatic (using the protocol autowriter).

- Interchangeable reaction modules, including five-color CFX96™ optical, four-color CFX384™ optical, gradient-enabled dual 48/48 fast, gradient-enabled 96-well fast, and gradient-enabled 384-well reaction modules
- USB ports that support peripherals, such as storage device and mouse
- Optional PC control and networking capability for up to 32 systems enable the ultimate in high throughput

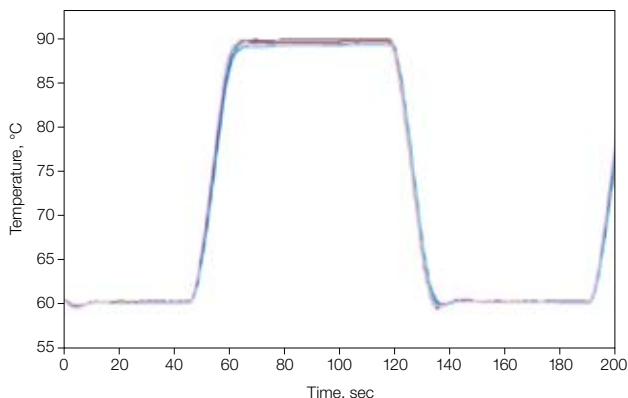


Specifications

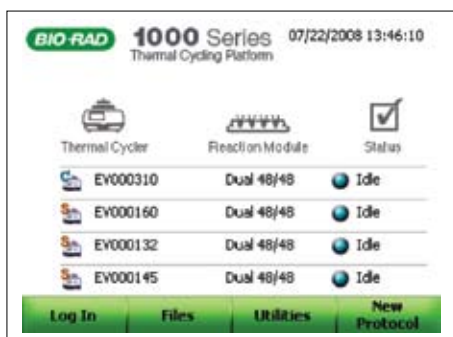
| | | | |
|--------------------------------|---|--|---|
| Thermal Cycler | | (cont.) | |
| Input power | 400 W, maximum | Programming options | Step-based graphical, text based, automatic |
| Frequency | 50–60 Hz, single phase | Security features | Password-protected folders, optional log-in, and secured mode for highly regulated environments |
| Display | 12 x 9 cm, high resolution, color | Reporting | Exportable run logs, system error logs |
| Ports | 5 USB A, 1 USB B | Onboard software | Windows CE 6.0 |
| Fuses | Two 6.3 A, 250 V, 5 x 20 mm | PC compatibility | Windows XP or higher |
| Memory | >1,000 typical programs onboard Unlimited with USB flash drive | USB peripheral compatibility | Mouse, USB flash drive, bar code reader |
| Dimensions (W x D x H) | 13 x 18 x 8" | Real-time upgrade | 6-channel, 5-color CFX96 or 5-channel, 4-color CFX384 optical reaction modules |
| Weight | 23 lb | Instant incubation | Yes |
| Temperature control modes | Calculated and block | | |
| PCR license | Yes | | |
| Reaction Modules | | Dual 48/48 Fast | 384-Well |
| Sample capacity | 96-Well Fast 96 x 0.2 ml tubes or 1 x 96-well PCR plate | 2 x 48 x 0.2 ml tubes | 1 x 384-well PCR plate |
| Maximum ramp rate | 5°C/sec | 4°C/sec | 2.5°C/sec |
| Average ramp rate | 3.3°C/sec | 3°C/sec | 2°C/sec |
| Temperature range | 0–100°C | 0–100°C | 0–100°C |
| Temperature accuracy | ±0.2°C of programmed target at 90°C | ±0.2°C of programmed target at 90°C | ±0.2°C of programmed target at 90°C |
| Temperature uniformity | ±0.4°C well-to-well within 10 sec of arrival at 90°C | ±0.4°C well-to-well within 10 sec of arrival at 90°C | ±0.4°C well-to-well within 10 sec of arrival at 90°C |
| Gradient capability | Yes | Yes | Yes |
| Gradient | | | |
| Gradient accuracy | ±0.2°C of programmed temperature at end rows | | |
| Row uniformity | ±0.4°C well-to-well (within row) within 10 sec of arrival at target temperature | | |
| Gradient range | 30–100°C | | |
| Temperature differential range | 1–24°C | | |



Quick and easy protocol programming. The protocol autowriter in the cycler's onboard software can automatically suggest a fast temperature protocol based on input parameters. Suggested protocol is based on standard PCR guidelines, with hot-start, initial denaturation, annealing, and extension steps. Further reductions of run times are achieved by minimizing the number of steps and cycles, incubation times, and temperature differentials.



Rapid arrival at target temperature and superior uniformity. Graph shows temperature measured by probes in 15 wells across the sample block of a C1000 thermal cycler. Traces are nearly indistinguishable due to high uniformity. Note the consistent ramp rate throughout heating and cooling. 1000-series thermal cyclers exhibit high average ramp rates, rapid settling time, and tight thermal uniformity throughout the ramp, resulting in rapid arrival at target temperature and enabling faster protocol run times.



Multi-instrument control. The C1000 cycler can control multiple thermal cyclers using a single interface.

Ordering Information

| Catalog # | Description |
|-----------|---|
| 184-1000 | C1000 Thermal Cycler Chassis , includes USB flash drive, C1000 Manager™ software CD, power cord, instruction manual; does not include reaction module |
| 185-1048R | C1000 Thermal Cycler With Dual 48/48 Fast Reaction Module , includes thermal cycler chassis, dual 48/48 fast reaction module, USB flash drive, C1000 Manager software CD, power cord, reagent and consumable samples, instruction manual |
| 185-1096R | C1000 Thermal Cycler With 96-Well Fast Reaction Module , includes thermal cycler chassis, 96-well fast reaction module, USB flash drive, C1000 Manager software CD, power cord, reagent and consumable samples, instruction manual |
| 185-1384R | C1000 Thermal Cycler With 384-Well Reaction Module , includes thermal cycler chassis, 384-well reaction module, USB flash drive, C1000 Manager software CD, power cord, reagent and consumable samples, instruction manual |
| 184-0048 | Dual 48/48 Fast Reaction Module , 2 independent 48-well blocks, fits C1000 and S1000 thermal cyclers |
| 184-0096 | 96-Well Fast Reaction Module , fits C1000 and S1000 thermal cyclers |
| 184-0384 | 384-Well Reaction Module , fits C1000 and S1000 thermal cyclers |
| 184-4000 | C1000 Manager Software , version 1.0, includes installation CD, instructions |
| 184-5096 | CFX96 Optical Reaction Module , includes CFX Manager™ software, license for qbase ^{PLUS} software, communication cable, reagent and consumable samples, instruction manual |
| 184-5384 | CFX384 Optical Reaction Module , includes CFX Manager software, license for qbase ^{PLUS} software, communication cable, reagent and consumable samples, instruction manual |
| 170-8870 | iTaq™ DNA Polymerase , 5 U/μl |
| 172-5301 | iProof™ High-Fidelity DNA Polymerase , 2 U/μl, 100 U |

Windows is a trademark of Microsoft Corporation.

Purchase of this instrument conveys a limited non-transferable immunity from suit for the purchaser's own internal research and development and for use in human in vitro diagnostics and all other applied fields under one or more of U.S. Patents 5,656,493, 5,333,675, 5,475,610 (claims 1, 44, 158, 160-163 and 167 only), and 6,703,236 (claims 1-7 only), or corresponding claims in their non-U.S. counterparts, owned by Applied Biosystems. No right is conveyed expressly, by implication or by estoppel under any other patent claim, such as claims to apparatus, reagents, kits, or methods such as 5' nuclease methods. Further information on purchasing licenses may be obtained by contacting the Director of Licensing, Applied Biosystems, 850 Lincoln Centre Drive, Foster City, California 94404, USA.

Bio-Rad's real-time thermal cyclers are licensed real-time thermal cyclers under Applera's United States Patent 6,814,934 B1 for use in research, human in vitro diagnostics, and all other fields except veterinary diagnostics.

This product is covered by one or more of the following U.S. patents or their foreign counterparts owned by Eppendorf AG: U.S. Patent Nos. 6,767,512 and 7,074,367.

Practice of the patented 5' Nuclease Process requires a license from Applied Biosystems. The purchase of these products includes an immunity from suit under patents specified in the product insert to use only the amount purchased for the purchaser's own internal research when used with the separate purchase of Licensed Probe. No other patent rights are conveyed expressly, by implication, or by estoppel. Further information on purchasing licenses may be obtained from the Director of Licensing, Applied Biosystems, 850 Lincoln Centre Drive, Foster City, California 94404, USA.



**Bio-Rad
Laboratories, Inc.**

Life Science
Group

Web site www.bio-rad.com USA 800 4BIORAD Australia 61 02 9914 2800 Austria 01 877 89 01 Belgium 09 385 55 11 Brazil 55 21 3237 9400 Canada 905 364 3435 China 86 21 6426 0808 Czech Republic 420 241 430 532 Denmark 44 52 10 00 Finland 09 804 22 00 France 01 47 95 69 65 Germany 089 318 84 0 Greece 30 210 777 4396 Hong Kong 852 2789 3300 Hungary 36 1 455 8800 India 91 124 4029300 Israel 03 963 6050 Italy 39 02 216091 Japan 03 6361 7000 Korea 82 2 3473 4460 Mexico 52 555 488 7670 The Netherlands 0318 540666 New Zealand 0508 805 500 Norway 23 38 41 30 Poland 48 22 331 99 99 Portugal 351 21 472 7700 Russia 7 495 721 14 04 Singapore 65 6415 3188 South Africa 27 861 246 723 Spain 34 911 590 5200 Sweden 08 555 12700 Switzerland 061 717 95 55 Taiwan 886 2 2578 7189 United Kingdom 020 8328 2000