



**Bio-Plex™**

x-Plex™ Assays

Personal Selection

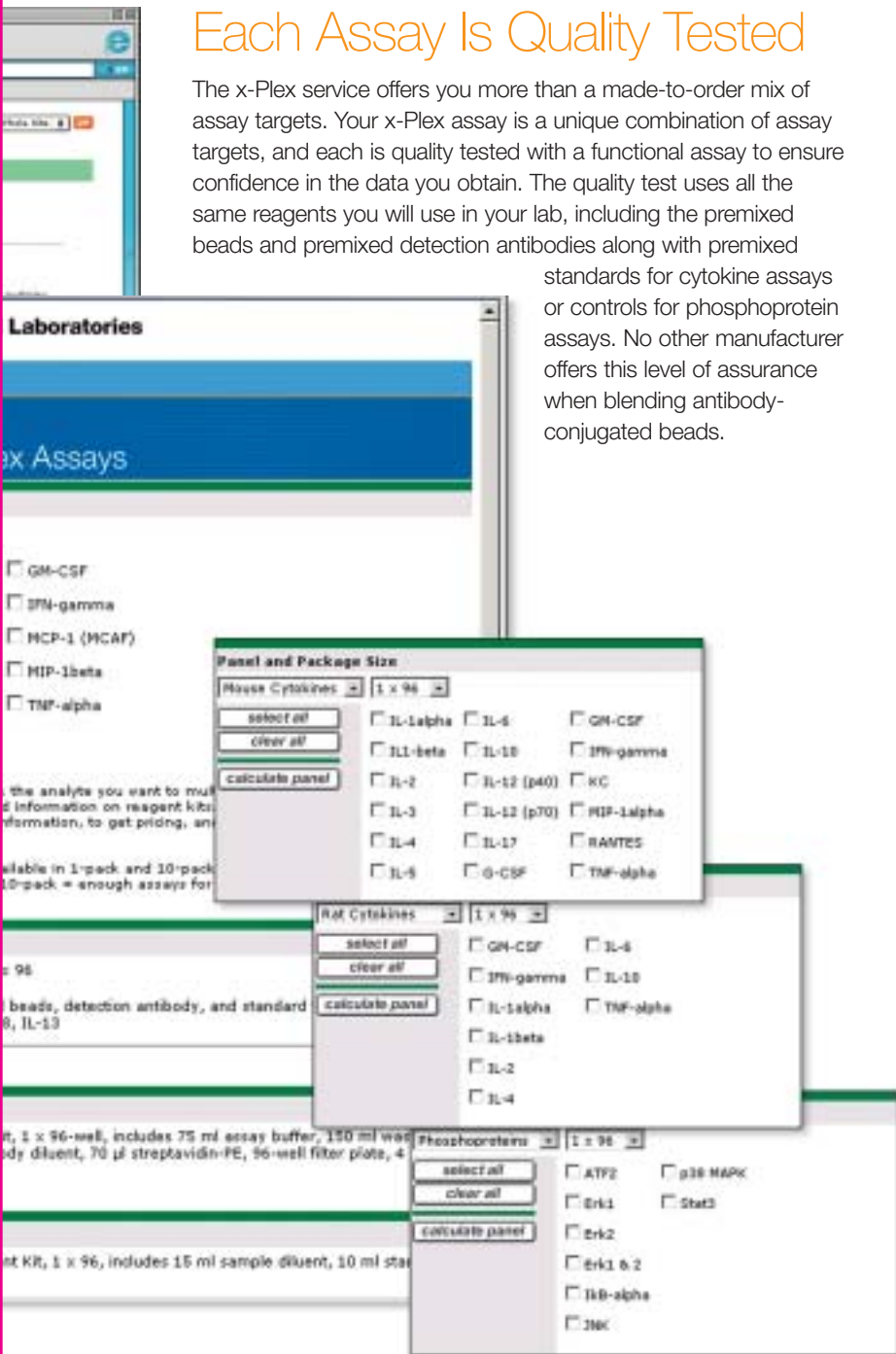
**BIO-RAD**



# Order Assays Combination

## Each Assay Is Quality Tested

The x-Plex service offers you more than a made-to-order mix of assay targets. Your x-Plex assay is a unique combination of assay targets, and each is quality tested with a functional assay to ensure confidence in the data you obtain. The quality test uses all the same reagents you will use in your lab, including the premixed beads and premixed detection antibodies along with premixed standards for cytokine assays or controls for phosphoprotein assays. No other manufacturer offers this level of assurance when blending antibody-conjugated beads.

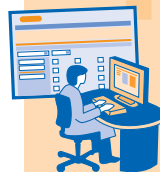


## How our delivery system works

1

### Make your selection

Configure your x-Plex panel online at [www.bio-rad.com/bioplex/x-plex/](http://www.bio-rad.com/bioplex/x-plex/). Then place your order using your unique x-Plex catalog number.



2

### Made to order

Our highly trained specialists will custom mix your assay to your specifications.



3

### Quality tested

All custom mixes will be thoroughly tested by our quality control department, then carefully packaged and shipped to you.



4

### Get just what you need

Receive the custom assay panel made specifically for your research.



## Ordering Information

### x-Plex Assays

Once you have obtained a catalog number specific to your x-Plex assay through [www.bio-rad.com/bioplex/x-plex/](http://www.bio-rad.com/bioplex/x-plex/), place your order as with any other Bio-Rad product. For cytokine x-Plex assays, you also need the universal cytokine reagent kit and a serum diluent kit if you are testing serum samples. For phosphoprotein x-Plex assays, you also need the universal phosphoprotein reagent kit and a cell lysis kit for lysate preparation. When reordering your x-Plex panel, simply use the same x-Plex catalog number.

Catalog #	Description
<b>x-Plex Assays</b> (numbers generated online)	
x-Number	<b>Bio-Plex Human Cytokine x-Plex Panel</b>
x-Number	<b>Bio-Plex Mouse Cytokine x-Plex Panel</b>
x-Number	<b>Bio-Plex Rat Cytokine x-Plex Panel</b>
x-Number	<b>Bio-Plex Phosphoproteins x-Plex Panel</b>
<b>Reagent Kits</b>	
171-304000	<b>Bio-Plex Cytokine Reagent Kit</b> , 1 x 96-well
171-304001	<b>Bio-Plex Cytokine Reagent Kit</b> , 10 x 96-well
171-304004	<b>Bio-Plex Phosphoprotein Reagent Kit</b> , 1 x 96-well
171-304005	<b>Bio-Plex Phosphoprotein Reagent Kit</b> , 10 x 96-well
<b>Sample Preparation Kits</b>	
171-304011	<b>Bio-Plex Cell Lysis Kit</b> , 1 x 96-well
171-304012	<b>Bio-Plex Cell Lysis Kit</b> , 10 x 96-well
171-305000	<b>Bio-Plex Human Serum Diluent Kit</b> , 1 x 96-well
171-305001	<b>Bio-Plex Human Serum Diluent Kit</b> , 10 x 96-well
171-305004	<b>Bio-Plex Mouse Serum Diluent Kit</b> , 1 x 96-well
171-305005	<b>Bio-Plex Mouse Serum Diluent Kit</b> , 10 x 96-well
171-305008	<b>Bio-Plex Rat Serum Diluent Kit</b> , 1 x 96-well

### Cell Signaling Analysis Just Got Easier

Maximize the benefits of the Bio-Plex system and profile both the extracellular cytokines and intracellular kinases present in the same sample. Use the cell culture supernatant with Bio-Plex cytokine assays, and the cell pellet for activated kinases with phosphoprotein assays.

### What You Need For ...

Cytokine Testing	Phosphoprotein Testing
<b>Human, mouse, or rat samples</b>	<b>Mammalian samples</b>
 Bio-Plex Cytokine Assays	 Bio-Plex Phosphoprotein Assays
 Bio-Plex Cytokine Reagent Kit	 Bio-Plex Cell Lysis Kit
 Bio-Plex Diluent Kit (optional)	 Bio-Plex Phosphoprotein Reagent Kit



**Bio-Rad**  
Laboratories, Inc.

Life Science  
Group

Web site [www.bio-rad.com](http://www.bio-rad.com) USA (800) 4BIORAD Australia 02 9914 2800 Austria (01)-877 89 01 Belgium 09-385 55 11 Brazil 55 21 507 6191 Canada (905) 712-2771 China (86-21) 63052255 Czech Republic + 420 2 41 43 05 32 Denmark 44 52 10 00 Finland 09 804 22 00 France 01 47 95 69 65 Germany 089 318 84-1777 Hong Kong 852-2789-3300 India (91-124)-6398112/113/114, 6450092/93 Israel 03 951 4127 Italy 39 02 216091 Japan 03-5811-6270 Korea 82-2-3473-4460 Latin America 305-894-5950 Mexico 55-52-00-05-20 The Netherlands 0318-540666 New Zealand 64 9 415 2280 Norway 23 38 41 30 Poland + 48 22 331 99 99 Portugal 351-21-472-7700 Russia 7 095 721 1404 Singapore 65-6415 3188 South Africa 00 27 11 4428508 Spain 34 91 590 5200 Sweden 08 555 12700 Switzerland 061 717-9555 Taiwan (8862) 2578-7189/2578-7241 United Kingdom 020 8328 2000