

## Regional Options for Microsoft Windows 2000 and XP Operating Systems

### Introduction

Bio-Plex Manager™ data files are exported to Microsoft Excel spreadsheets using English number settings. For example, the number 1,234.56 has a comma as the digit grouping symbol and a period for the decimal symbol. The number settings for most European regions in Windows 2000 and XP Regional Options will use a period as the digit grouping symbol and a comma for the decimal symbol, i.e., 1.234,56. If Bio-Plex Manager is being used on a computer that has the Windows Regional Options set for any region other than English (United States), data exported from Bio-Plex Manager to Excel may be exported as text rather than as numerical

values. The data set will therefore not be recognized by Excel as containing valid numbers, and calculations cannot be performed. This document illustrates how to change the Regional Options number settings to remedy this problem.

### Procedure for Changing Windows 2000/XP Regional Options

Regional Options may be changed in Windows 2000 and XP as needed. Excel must be closed at the time the Regional Options are set in order for the new settings to take effect in the application. If the application is not closed at the time the settings are changed, the application must be closed and restarted before the settings will become active.

Please follow the steps below for:

Windows 2000	Windows XP
<p><b>Step 1</b> In the Windows 2000 Desktop view, go to Start/Settings/Control Panel (Figure 1A).</p> <p><b>Step 2</b> In the Control Panel, choose Regional Options (Figure 2A).</p> <p><b>Step 3</b> In the Regional Options window, choose the Numbers tab (Figure 3A).</p> <p><b>Step 4</b> In the Regional Options “Numbers” tab window, set the new number options as shown in Figure 4A:</p> <ul style="list-style-type: none"> <li>• Change the decimal symbol to a period (.)</li> <li>• Change the digit grouping symbol to a comma (,)</li> </ul> <p>Once these two options are set, click Apply.</p> <p><b>Step 5</b> In the Appearance samples box, the number should now be displayed as 123,456,789.00 as shown (Figure 5A).</p> <p><b>Step 6</b> Click OK to close the Regional Options window. You should now be able to export values from Bio-Plex Manager to Excel and use them in calculations.</p>	<p><b>Step 1</b> In the Windows XP Desktop view, go to Start/Settings/Control Panel (Figure 1B).</p> <p><b>Step 2</b> In the Control Panel, choose Regional and Language Options (Figure 2B).</p> <p><b>Step 3</b> In the Regional and Language Options Window, click the Customize button in the Regional Options tab window to open Customize Regional Options (Figure 3B).</p> <p><b>Step 4</b> In the Customize Regional Options window, choose the Numbers tab (Figure 4B).</p> <p>In the Regional Options “Numbers” tab window, set the new number options:</p> <ul style="list-style-type: none"> <li>• Change the decimal symbol to a period (.)</li> <li>• Change the digit grouping symbol to a comma (,)</li> </ul> <p>Once these two options are set, click Apply.</p> <p><b>Step 5</b> In the Regional Options Samples&gt;Number box, the number should now be displayed as 123,456,789.00 as shown (Figure 5B).</p> <p><b>Step 6</b> Click OK to close the Regional and Language Options window. You should now be able to export values from Bio-Plex Manager to Excel and use them in calculations.</p>

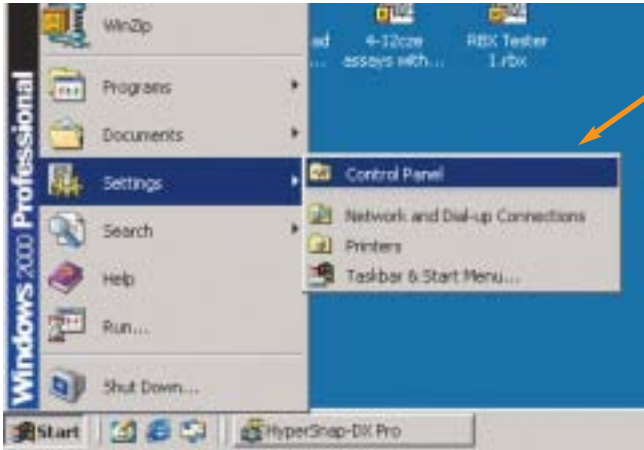


Fig. 1A. Windows 2000 Desktop view.

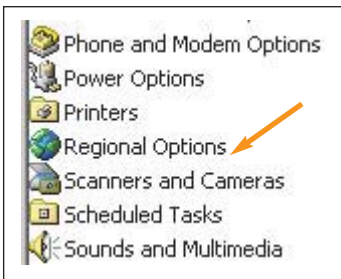


Fig. 2A. Windows 2000 Control Panel window.

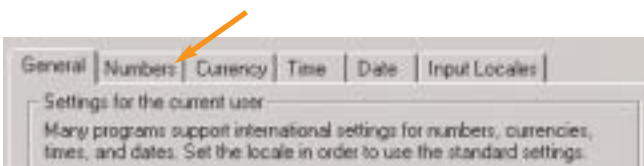


Fig. 3A. Windows 2000 Regional Options window.

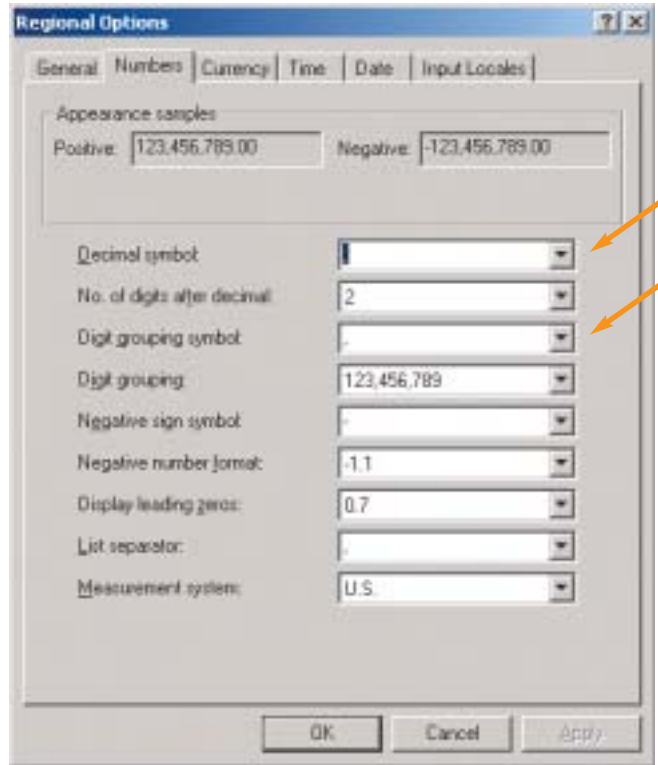


Fig. 4A. The Appearance samples box displays correct number format in the Windows 2000 Regional Options "Numbers" tab window.

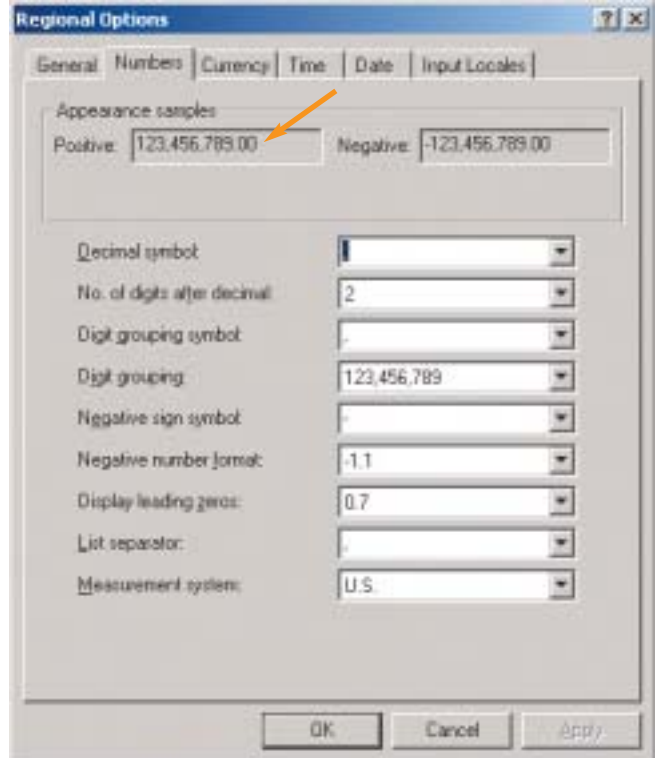


Fig. 5A. The Appearance samples box displays correct number format in the Windows 2000 Regional Options "Numbers" tab window.

# Windows XP



Fig. 1B. Windows XP Desktop view.

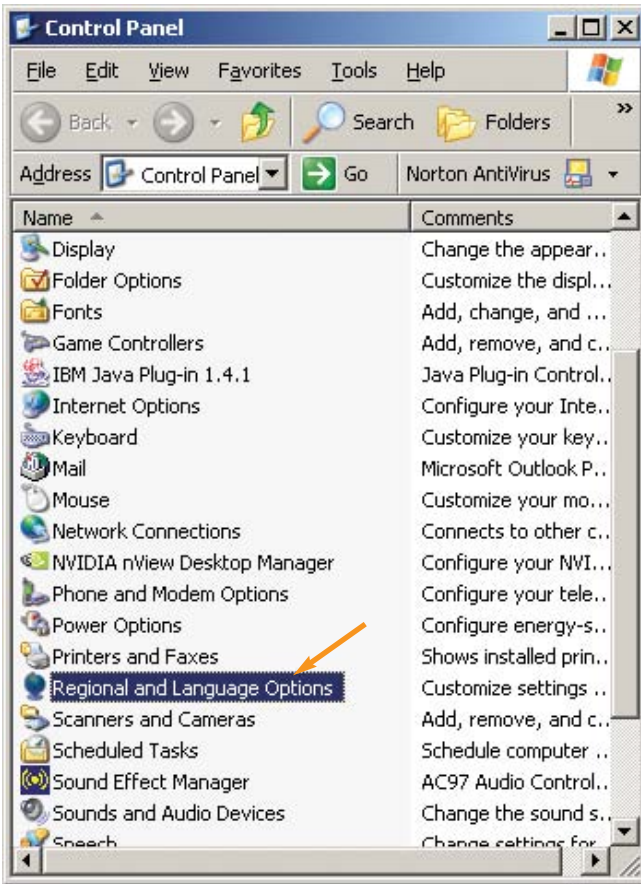


Fig. 2B. Windows XP Control Panel window.

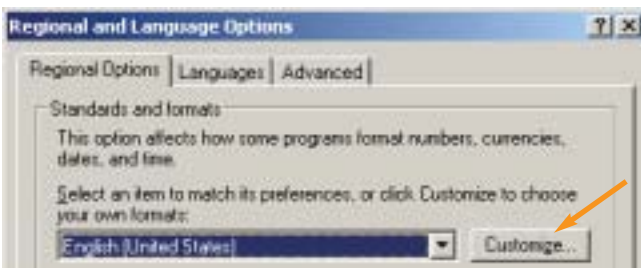


Fig. 3B. Windows XP Regional and Language Options window.

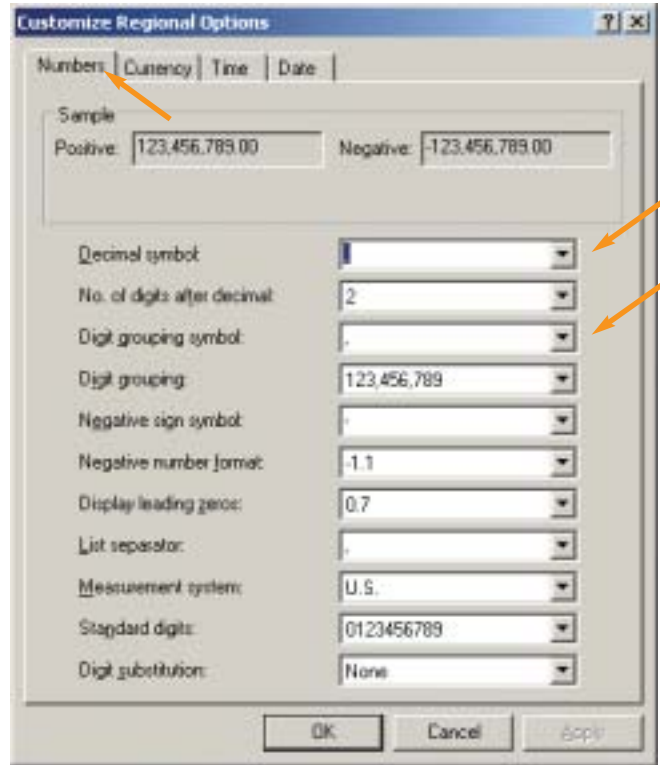


Fig. 4B. Windows XP Customize Regional Options window.

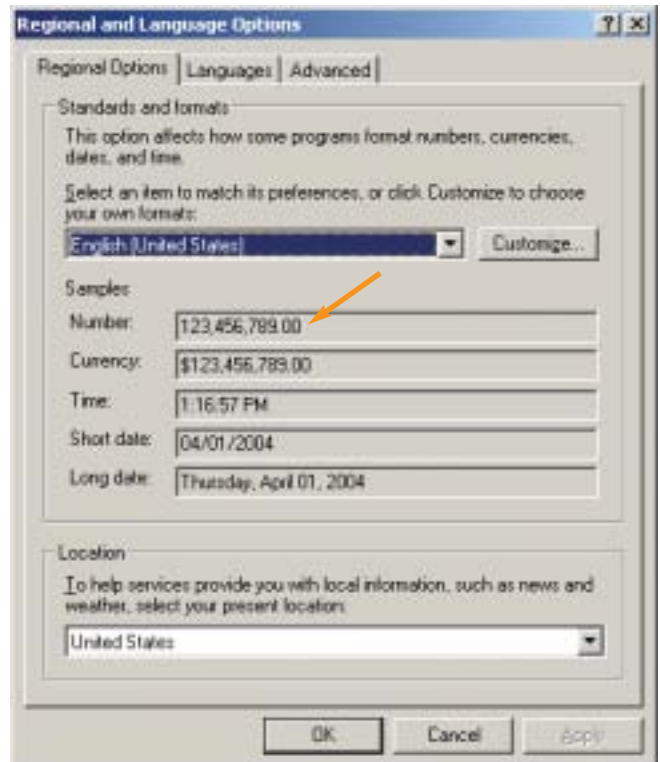


Fig. 5B. The Samples>Number box displays the correct number format in the Windows XP Regional and Language Options "Regional Options" tab window.

Excel, Windows, Windows 2000, and Windows XP are trademarks of Microsoft Corporation.



**Bio-Rad  
Laboratories, Inc.**

---

*Life Science  
Group*

**Web site** [www.bio-rad.com](http://www.bio-rad.com) **USA** (800) 4BIORAD **Australia** 02 9914 2800 **Austria** (01)-877 89 01 **Belgium** 09-385 55 11 **Brazil** 55 21 2527 3454  
**Canada** (905) 712-2771 **China** (86-21) 63052255 **Czech Republic** + 420 2 41 43 05 32 **Denmark** 44 52 10 00 **Finland** 09 804 22 00  
**France** 01 47 95 69 65 **Germany** 089 318 84-0 **Hong Kong** 852-2789-3300 **Hungary** 36 1 455 8800 **India** (91-124)-6398112/113/114, 6450092/93  
**Israel** 03 951 4127 **Italy** 39 02 216091 **Japan** 03-5811-6270 **Korea** 82-2-3473-4460 **Latin America** 305-894-5950 **Mexico** 55-52-00-05-20  
**The Netherlands** 0318-540666 **New Zealand** 64 9 415 2280 **Norway** 23 38 41 30 **Poland** + 48 22 331 99 99 **Portugal** 351-21-472-7700  
**Russia** 7 095 721 1404 **Singapore** 65-6415 3188 **South Africa** 00 27 11 4428508 **Spain** 34 91 590 5200 **Sweden** 08 555 12700  
**Switzerland** 061 717-9555 **Taiwan** (8862) 2578-7189/2578-7241 **United Kingdom** 020 8328 2000