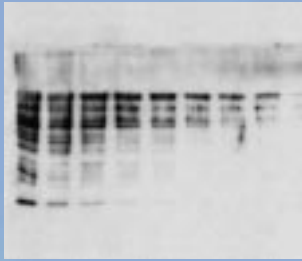




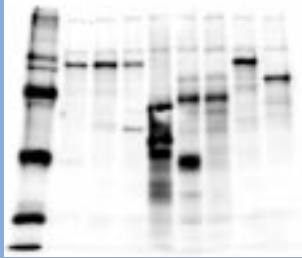
See What You've Been Missing.
The Fluor-S[®] MAX Multimager Offers Ultra-Sensitive
Chemiluminescent Imaging.

BIO-RAD

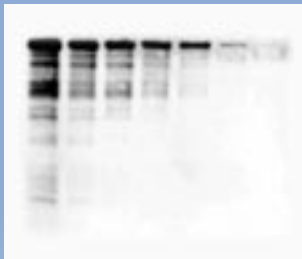
MAX flexibility



Amplight Chemiluminescent Western Blot



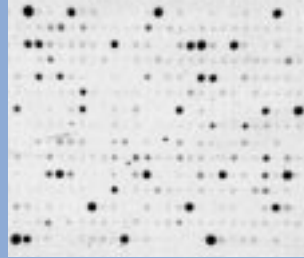
ECL Chemiluminescent Western Blot



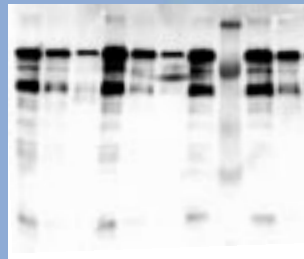
CDP-Star Western Blot



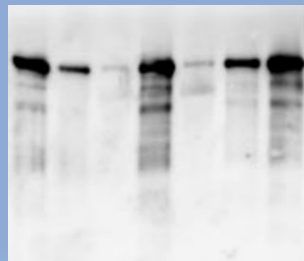
AttoPhos Chemifluorescent Western Blot



CDP-Star Array Blot



SuperSignal Ultra Chemiluminescent Western Blot



ECL Plus Chemifluorescent Western Blot

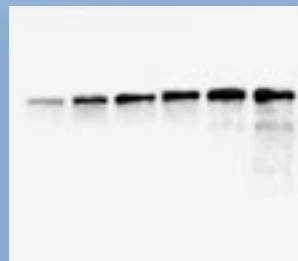
To say the Fluor-S MAX is flexible is to understate the extraordinary capabilities of this ultra-sensitive system. It is, in a word, astounding. From low abundance chemiluminescent blots and multi-colored fluorescence gels to direct fluorescence blots, colorimetric samples and x-ray film, the Fluor-S MAX provides perfect images and precise quantitation. Every time. The patented optical design also incorporates multi-color fluorescence collection to produce perfectly aligned multi-color images. The Fluor-S MAX. A single-source quantitative imaging system that truly is the essence of light imaging.

The Essence of Chemiluminescence

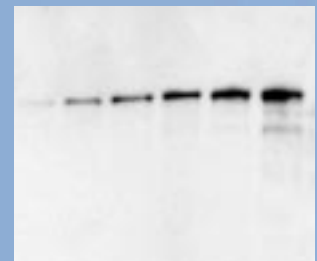
- Experience filmless detection while saving time and money
- Achieve unsurpassed sensitivity down to 20 pg of protein on an ECL western dot blot
- Produce time-saving exposures at speeds equal to or faster than film
- Obtain more accurate quantitation than film-based detection with 16-bit acquisition and a dynamic range of 4.8 orders
- Detect all Horseradish Peroxidase (HRP) activated substrates, including Amplight™, ECL®, ECL Plus®, SuperSignal™, SuperSignal Ultra, SuperSignal NA and SuperSignal Blaze
- Detect all Alkaline Phosphatase (AP) activated substrates, including CDP-Star®, CSPD® and AMPPD®
- Perform high sensitivity detection of chemifluorescent substrates, including AttoPhos® and ECL Plus

EXCEPTIONAL SENSITIVITY

- Three-phase peltier-controlled, super-cooled CCD detector operating at -35 °C
- Back-thinned CCD for enhanced signal detection and low signal-to-noise
- Very large 24 x 24 micron pixels for superior light collection



Fluor-S MAX



Film

Comparison of Fluor-S MAX and film detection. CDP-Star western blot of transferrin 2-fold serial dilutions exposed for 1 minute to both the Fluor-S MAX and Kodak® XAR film.

MAX performance



The Fluor-S MAX is a traditional image camera with a super-cooled CCD sensor. The Fluor-S MAX offers faster speeds. Chemical reactions can be analyzed in real time or faster than real time. A wide range of the dynamic range of the detector can be analyzed. This is ideal for research with time-lapse imaging.

The Most Accurate

- Extended dynamic range and strong signal-to-noise ratio
- 16-bit precision for accurate quantification of closely matched signals
- Advanced dark field and background noise reduction



Performance

MAX dramatically surpasses the performance limits of imaging technologies. By combining the next generation in CCD detector technology with high efficiency optics, MAX produces superior quality images at extraordinary fluorescence results are typically obtained in the same time as film-based methods, and the extended dynamic range ensures that even the most challenging samples are imaged with precision. So if you want to advance your imaging to the ultimate in digital imaging, just take it to the MAX!

Accurate Quantitation

Dynamic range of 4.8 orders for quantitation of both weak and strong signals on the same sample. High resolution (65,536 gray levels) for enhanced discrimination of closely spaced signals. Automatic background correction to remove electronic noise.

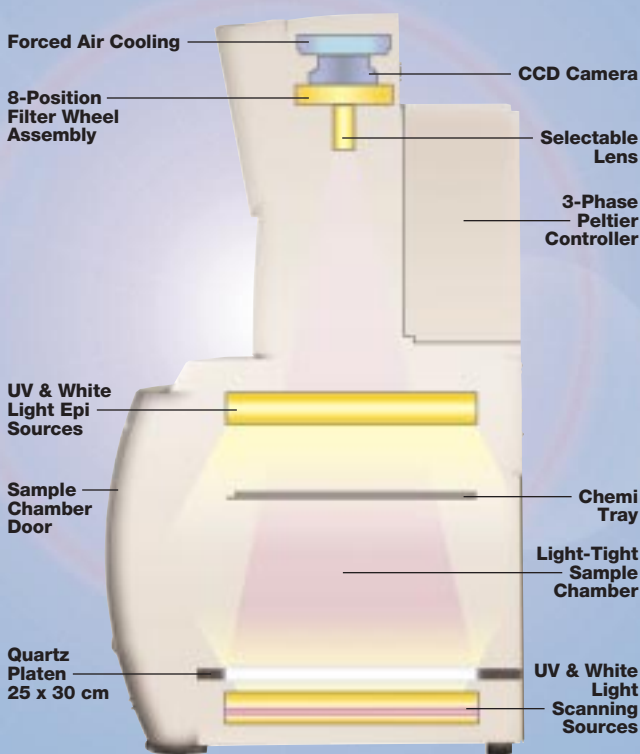


Advanced Imaging Technology

- Multi-mode imaging with the ability to select either transmittance illumination for visualizing transparent samples such as gels and film or epi-illumination for detecting opaque samples such as blots
- Rapid scanning trans-illumination mechanism with higher uniformity than stationary bulb sources
- Broad bandwidth UV excitation supports the excitation of an extensive range of fluorescent dyes and labels
- Large UV fluorescence Stokes shift (the discrimination between the excitation and emission wavelengths) and minimal auto-fluorescence for improved signal-to-noise ratios and fluorescence sensitivity
- White light illumination for high sensitivity detection of colorimetric samples and autoradiographs
- Large, easy-access sample stage (40 x 60 cm) and sample imaging area (25 x 30 cm)
- Flexible optics design for compatibility with most f-mount lenses for custom applications

Powerful, Easy-to-Use Software

- Turn-key application-driven acquisition, requiring no user knowledge of sample excitation or collection settings
- Automated control of scanning system through a flexible de-coupled computer interface
- Intelligent multi-platform software which operates in Macintosh® and Windows® 95, 98 and NT environments
- Choice of application-specific programs for fingerprinting, 2-D and sequence analysis

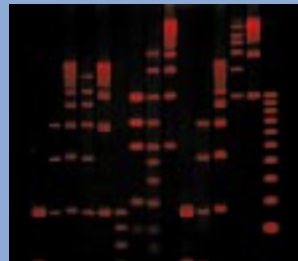


The Essence of Fluorescence

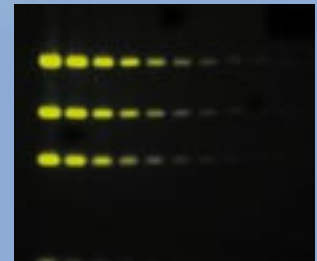
- Experience compatibility with an extensive range of fluorescent dyes and labels, including ethidium bromide, SYBR Green®, SYBR Gold®, SYPRO®, Radiant™ Red, DNA Star®, fluorescein (FITC), rhodamine, Cy®2, Cy3, Texas Red®, Green Fluorescent Protein and many more
- Perform true multi-color fluorescence imaging with a choice of eight emission filter positions and interchangeable (user-accessible) filters
- Produce perfectly co-registered images for accurate analysis and overlay production with patented multi-imaging optics
- Use multiplex analysis (loading multiple samples or combining standards and samples in the same lane) for more accurate molecular weight determinations and increased sample throughput

Densitometry and Colorimetric Imaging

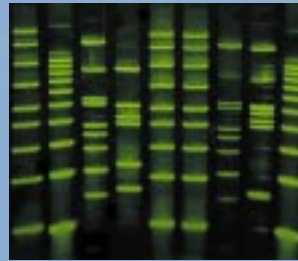
- Perform high quality imaging and analysis of 1-D and 2-D gels, blots and autoradiograms
- Detect numerous colorimetric stains, including Coomassie® blue, copper, zinc and silver stain



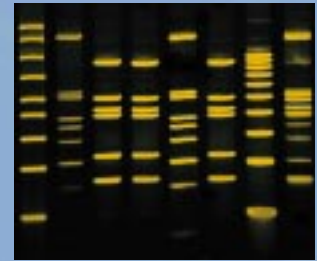
Ethidium Bromide



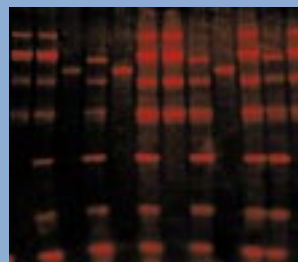
DNA Star



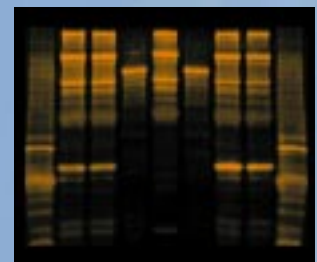
SYBR Green I



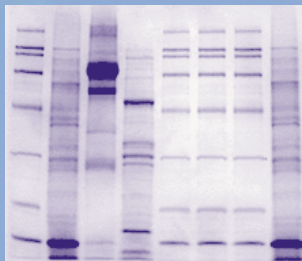
SYBR Gold



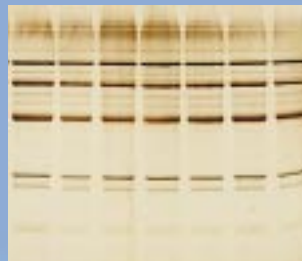
SYPRO Red Protein Stain



SYPRO Orange Protein Stain



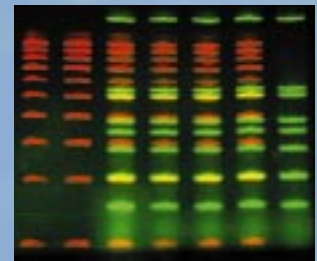
Coomassie Blue



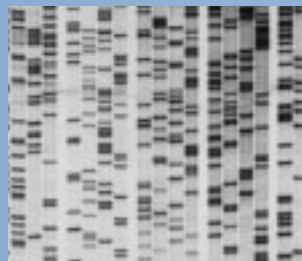
Silver Stain



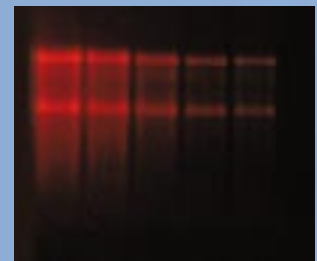
FITC Microplate



FITC/Texas Red Dual Color Fluorescence



X-ray Film



Radiant Red

Specifications

Detector	Back illuminated high sensitivity CCD
Cooling System	Forced-air 3 stage peltier thermoelectric system
Cooling Range	0 to -35 °C
Pixel Size	24 micron x 24 micron
Pixel Density	512 (H) x 512 (W)
Sensitivity	20 pg transferrin ECL western dot blot
Dynamic Range	4.8 orders
Data Density	16 bit (65,536 gray levels)
Illumination Modes	Scanning and epi-illumination
Excitation Wavelengths	Broad bandwidth UV and white light
Standard Emission Filters	520 long pass, 530DF30, 610 long pass
Maximum Sample Size	40 x 60 cm
Maximum Imaging Area	25 x 30 cm
Software Compatibility	Windows 95/98/NT and Macintosh
Dimensions	68 (W) x 54 (D) x 109 (H) cm
Weight	120 lbs. (69.5 kg)

Ordering Information

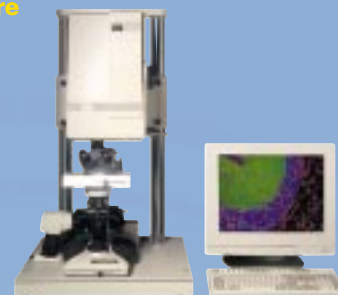
Catalog #	Description
170-7720	Fluor-S MAX Multimager System/PC 100/240 V for PC operating systems, includes 50 mm and 28-80 mm zoom lens, sample tray, PC SCSI cable, cleaning kit, Quantity One™ software and instructions
170-7721	Fluor-S MAX Multimager System/Mac 100/240 V for Macintosh® operating systems, includes 50 mm and 28-80 mm zoom lens, sample tray, Mac SCSI cable, cleaning kit, Quantity One software and instructions

Molecular Imager, Fluor-S, AmpLight, Radiant and Quantity One are trademarks of Bio-Rad Laboratories. Macintosh and Power Macintosh are trademarks of Apple Computer, Inc. Windows, Windows 95, Windows 98 and Windows NT are trademarks of Microsoft, Inc. SYBR, SYPRO and Texas Red are trademarks of Molecular Probes, Inc. Cy, ECL and ECL Plus are trademarks of Amersham Pharmacia Biotech Ltd. SuperSignal, SuperSignal Ultra, SuperSignal Blaze and SuperSignal NA are trademarks of Pierce Chemical Co. CDP-Star, CSPD and AMPPD are trademarks of Tropix, Inc. Coomassie is a registered trademark of ICI Organics, Inc. AttoPhos is a registered trademark of JBL Scientific, Inc. DNA Star is a registered trademark of FMC.

Integrated Imaging Systems and Software



MOLECULAR IMAGER® FX SYSTEMS



CONFOCAL IMAGING SYSTEMS



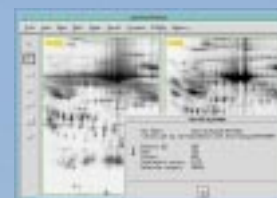
FLUOR-S® MULTIIMAGER SYSTEMS



DENSITOMETRY SYSTEMS



GEL DOCUMENTATION SYSTEMS



SPECIALIZED RFLP, 2-D AND SEQUENCING SOFTWARE

Fluorescent Reagents and Kits

AMPLIGHT FLUORESCENT & CHEMILUMINESCENT DETECTION KITS

These kits employ novel HRP-based chemistries which have been optimized for highly sensitive western detection using digital imaging systems.

SYPRO ORANGE FLUORESCENT PROTEIN STAIN

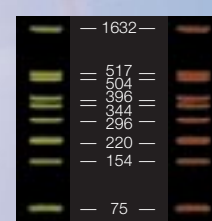
Highly sensitive and easy-to-use stain for visualizing 1-D and 2-D SDS-PAGE and native protein gels.

RADIANT RED FLUORESCENT RNA STAIN

A sensitive fluorescent stain for visualizing RNA following electrophoresis in denaturing agarose gels.

TWO-COLOR FLUORESCENT DNA STANDARDS

Our DNA standards allow the ultimate in fragment sizing accuracy. Standards are pre-labeled with either fluorescein or Texas Red and available in a range of sizes, including convenient molecular weight rulers. Complementary sample end-labeling kits are also available.



BIO-RAD

**Bio-Rad
Laboratories**

Life Science
Group

Website www.bio-rad.com **Bio-Rad Laboratories Main Office** 2000 Alfred Nobel Drive, Hercules, CA 94547, Ph. (510) 741-1000, Fx. (510)741-5800
Also in: **Australia** Ph. 02 9914 2800, Fx. 02 9914 2889 **Austria** Ph. (01) 877 89 01, Fx. (01) 876 56 29 **Belgium** Ph. 09-385 55 11, Fx. 09-385 65 54
Canada Ph. (905) 712-2771, Fx. (905) 712-2990 **China** Ph. 86-10-62051850/51, Fx. 86-10-62051876 **Denmark** Ph. 45 39 17 99 47, Fx. 45 39 27 16 98
Finland Ph. 358 (0)9 804 2200, Fx. 358 (0)9 804 1100 **France** Ph. 01 43 90 46 90, Fx. 01 46 71 24 67 **Germany** Ph. 089 318 84-0, Fx. 089 318 84-100
Hong Kong Ph. 852-2789-3300, Fx. 852-2789-1257 **India** Ph. (91-11) 461-0103, Fx. (91-11) 461-0765 **Israel** Ph. 03 951 4127, Fx. 03 951 4129
Italy Ph. 39-02-216091, Fx.39-02-21609-399 **Japan** Ph. 03-5811-6270, Fx. 03-5811-6272 **Korea** Ph. 82-2-3473-4460, Fx. 82-2-3472-7003
Latin America Ph. 305-894-5950, Fx. 305-894-5960 **Mexico** Ph. 514-2210, Fx. 514-2209 **The Netherlands** Ph. 0318-540666, Fx. 0318-542216
New Zealand Ph. 64-9-4152280, Fx. 64-9-4152284 **Russia** Ph. 7-095-4585822, Fx. 7-095-4585782 **Singapore** Ph. 65-2729877, Fx. 65-2734835
Spain Ph. 34-91-661-7085, Fx. 34-91-661-9698 **Sweden** Ph. 46 (0)8 627 50 00, Fx. 46 (0)8 627 54 00 **Switzerland** Ph. 01-809 55 55, Fx. 01-809 55 00
United Kingdom Ph. 0800-181134, Fx. 01442-259118