



## dsDNA 1000 Fluorescent Detection and Analysis Kit

### Specifications

Fragment size range	100–1,000 bp
Resolution	10–20 bp
Number assays	400 runs
Capillary	BioCAP 75 $\mu$ m ID, coated, 50 cm length, 2
Dye	Fluorescent nucleic acid stain
Run buffer	Hydrophilic polymer in TBE
DNA standard	100 bp ladder
Dye excitation wavelength	488 nm
Dye emission wavelength	520 nm

### Fluorescent DNA analysis.

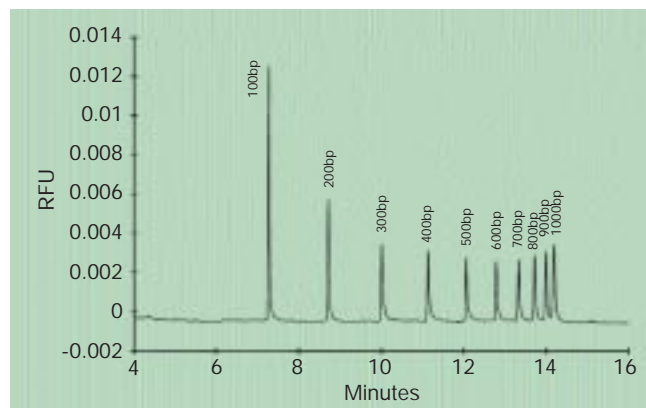
Bio-Rad now offers a completely automated DNA analysis system that's extremely fast and convenient. Our new dsDNA 1000 Fluorescent Detection and Analysis Kit is designed to complement the new BioFocus<sup>®</sup> capillary electrophoresis laser Induced Fluorescence LIF<sup>2</sup> Detection System. These two comprise an excellent choice for automated fluorescent analysis of DNA fragment size polymorphisms, DNA point mutations, microsatellite DNA analysis, DNA deletion analysis, and PCR<sup>®</sup> product analysis.

### Easy labeling, high resolution.

The new dsDNA 1000 Fluorescent Detection and Analysis Kit contains all the reagents you need to quickly label and resolve double stranded DNA fragments ranging from 100 to 1,000 base pairs. The kit utilizes a special hydrophilic polymer buffer which creates a sieving effect analogous to acrylamide. The ready-to-use buffer is replenished prior to each analysis, insuring the highest reproducibility of DNA fragment migration time and peak area. A 100 base-pair DNA ladder is included so you can accurately determine fragment sizes.

### Superior fluorescence sensitivity.

The BioFocus LIF<sup>2</sup> detector is at least 1,000 times more sensitive than existing UV absorbance detection. The key to laser induced fluorescence sensitivity is focusing a beam of high intensity, single wavelength laser light on a capillary. The BioFocus LIF<sup>2</sup> detector is capable of detecting picomolar concentrations of DNA, which is as sensitive as autoradiography, without the hazardous radioisotopes.



*Bio-Rad 100 bp molecular ruler (170-8202) resolved with the dsDNA Fluorescent Detection and Analysis Kit.*

**Focus on Performance**  
**The BioFocus<sup>®</sup> System**

**BIO-RAD**



## dsDNA 1000 Fluorescent Detection and Analysis Kit

### Electrophoretic analysis that's completely automated.

Simply load the carousels with buffers and samples, program the run conditions, and the BioFocus system does it all – real time detection, automatic data integration, and report printing for each DNA analysis. Not only are capillary separations fast, but the resolution is outstanding.

The BioFocus system virtually eliminates the need for conventional separation techniques including gel casting, sample loading, staining, exposing film, and film imaging.

BioFocus LIF<sup>2</sup> is the most advanced capillary electrophoresis system. Let the BioFocus LIF<sup>2</sup> system work for you! Contact your local Bio-Rad representative today.

\* The Polymerase Chain Reaction (PCR) Process is covered by patents owned by Hoffman-LaRoche. Use of the PCR process requires a license.

### Ordering Information

Catalog No.

148-4132

Product Description

dsDNA 1000 Fluorescent Detection and Analysis Kit, includes 2 capillaries, run buffer, DNA ladder, fluorescent nucleic acid stain

148-5100

dsDNA 1000 Fluorescent Nucleic Acid Stain

**Focus on Performance**  
**The BioFocus<sup>®</sup> System**

**BIO-RAD**

**Bio-Rad  
Laboratories**

Life Science  
Group

U.S. (202) 622-2700 • Canada (616) 761-1000 • Australia 02 9214 2200 • Austria (1) 277 2201 • Belgium 02 226 66 11 • Canada (905) 773-2771 • China (26) (0) 20499022 • Denmark 22 (7) 2267 • Finland 20 246 2207 • France (1) 62 20 69 20 • Germany 029 2 62 35-0 • India 21 (1) 661-0102 • Italy 02 210211 • Japan 03 6211-6210 • Hong Kong 22222000 • The Netherlands 020 2 62 0000 • New Zealand 02 442 2222 • Singapore (65) 273 2207 • Spain (91) 661 70 25 • Sweden 08 012 627 60 00 • Switzerland 01 262 65 65 • United Kingdom 020 3217 35