

# The GelAir Drying System

**BIO-RAD**



# Great Results

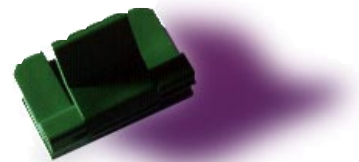
Are Not Created in a Vacuum



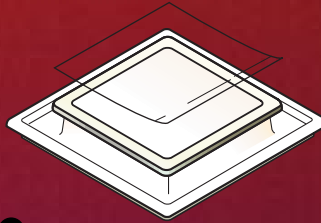
# The GelAir Drying System

You no longer need a vacuum drying system to get great gel drying results. The GelAir Drying System is perfect for drying polyacrylamide and agarose gels, even hard to dry gels. GelAir works like a convection oven to quickly dry gels to a perfectly clear, publication quality finish. These gels are ideal for densitometry, photo documentation, and autoradiography.

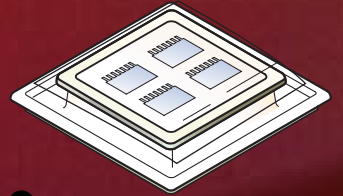
The only maintenance GelAir requires is an occasional cleaning with a damp cloth. Combining affordability, large capacity, and no-nonsense functionality, GelAir is the clear choice for busy labs requiring great results.



## Drying Gels with GelAir is This Easy



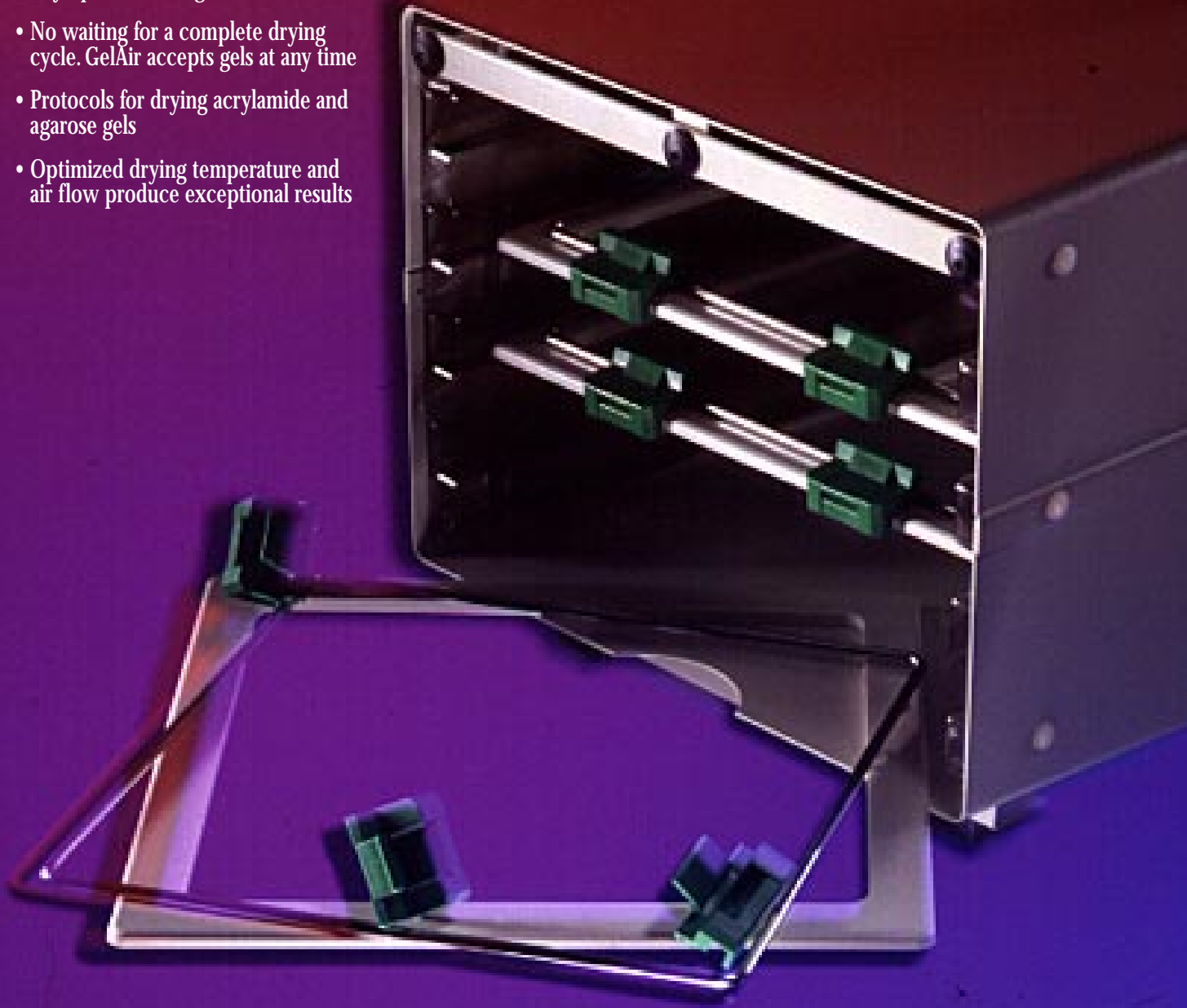
1 Place a sheet of cellophane on the assembly table

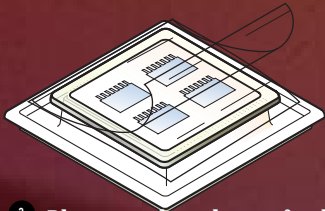


2 Lay a gel on top of the cellophane

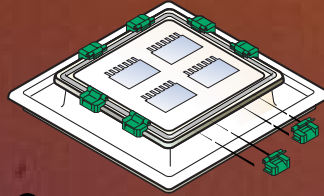
## Clear Reasons For Choosing a GelAir System

- Dry mini gels in less than 60 minutes
- No vacuum pump means no messy maintenance
- Dry up to 16 mini gels at one time
- No waiting for a complete drying cycle. GelAir accepts gels at any time
- Protocols for drying acrylamide and agarose gels
- Optimized drying temperature and air flow produce exceptional results

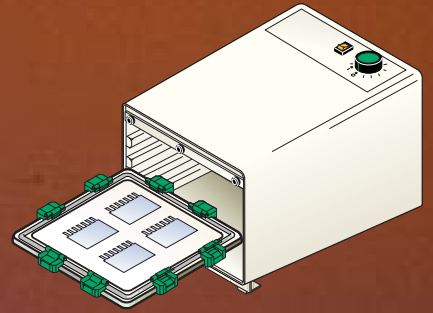




3 Place another sheet of cellophane over the gel



4 Clamp the drying frames together



5 Slide the drying frame into the dryer





## Specifications

### GelAir Dryer

Timer control	0 to 3 hour, fully adjustable
Function modes	Fan only, fan plus heat, and off
Dryer capacity	4 shelves, each accommodating 1 drying frame
Dimensions	27 x 43 x 30 cm (H x D x W)
Weight	8 kg

### Drying Frame

Dimensions	20 x 20 cm
Drying frame	Molded polycarbonate bottom frame, stainless steel top frame
Clamps	Molded polysulfone
Gel capacity	1 large (20 x 16 cm) gel or 4 small (7 x 8 cm) gels



## Ordering Information

### Catalog Number

### Product Description

165-1771	<b>GelAir Drying System</b> , 115 V, 60 Hz, includes dryer, 2 drying frames, 16 clamps, assembly table, and cellophane support (50 precut sheets)
165-1772	<b>GelAir Drying System</b> , 230 V, 50 Hz, includes dryer, 2 drying frames, 16 clamps, assembly table, and cellophane support (50 precut sheets)
165-1775	<b>GelAir Drying Frames</b> , includes 2 complete drying frames and 16 clamps
165-1776	<b>GelAir Assembly Table</b>
165-1777	<b>GelAir Dryer</b> , 115 V, 60 Hz
165-1778	<b>GelAir Dryer</b> , 230 V, 50 Hz
165-1779	<b>GelAir Cellophane Support</b> , 50 precut sheets
165-1780	<b>GelAir Drying Frame Clamps</b> , 8 clamps



**BIO-RAD**

**Bio-Rad  
Laboratories**