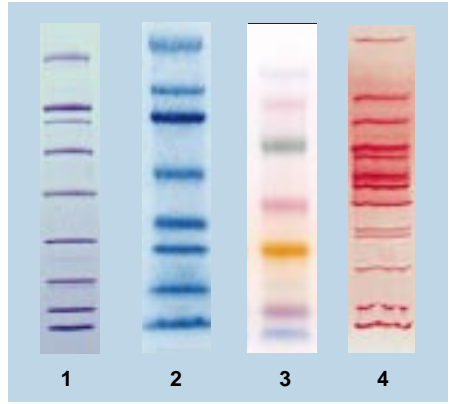


# Protein Standards

Bio-Rad offers protein standards for every application. Prestained standards are ideal for monitoring electrophoresis runs and assessing the efficiency of Western blots. Molecular weight standards allow precise molecular weight determination. IEF and 2-D standards calibrate pH gradients in native and first dimension isoelectric focusing gels.

For a poster size copy of the protein migration chart on the cover, request bulletin 1787.



1. SDS-PAGE Standards, broad range, 2. Prestained SDS-PAGE Standards, broad range, 3. Kaleidoscope Prestained Standards, 4. IEF Standards.

Protein Standard	MW Ranges	Detection Method	Applications	Notes
SDS-PAGE Standards	Low 14.4–97.4 kd High 45–200 kd Broad 6.5–200 kd Polypeptide 1.4–26.6 kd	Coomassie® blue, Zinc stain	MW determination in SDS-PAGE gels	Blended for Coomassie blue and zinc stained gels
Silver Stain SDS-PAGE Standards	Low 14.4–97.4 kd High 45–200 kd	Silver Stain/ Silver Stain Plus	MW determination in SDS-PAGE gels	Blended for silver stained gels
SDS-PAGE Standards for SYPRO Orange	Low High Broad	SYPRO Orange™ stain	MW determination and staining efficiency in SDS-PAGE	Formulated for use with SYPRO Orange stain.
Biotinylated SDS-PAGE Standards	Low 14.4–97.4 kd High 45–200 kd Broad 6.5–200 kd	Avidin-AP/ Avidin-HRP	MW determination on Western blots	MW determination without protein stain
Prestained SDS-PAGE Standards	Low ~18.5–106 kd High ~49.5–205 kd Broad ~6.5–205 kd	None required	Monitor gel runs and assess blotting efficiency	Lot specific calibrated molecular weights
Kaleidoscope Prestained Standards	~6.5–205 kd; Polypeptide ~3.5–40 kd	None required	Monitor SDS-PAGE runs and assess blotting efficiency	Lot specific calibrated molecular weights
2-D Standards	17.5–76 kd pI 4.5–8.5	Coomassie blue/ Silver Stain	pI and MW in 2-D gels	Run on same gel as the sample.
IEF Standards	pI 4.45–9.6	Crocein Scarlet/ Silver Stain	pI determination in native IEF gels	Monitor focus process

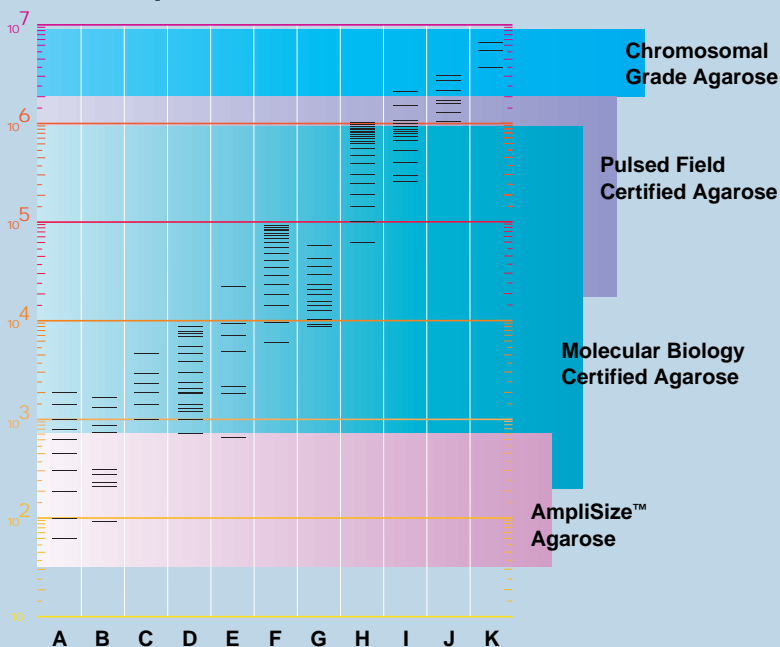
## DNA Standards

All of Bio-Rad's DNA size standards are batch tested for proper concentration and mobility, to provide a reliable control for gel-to-gel variability in either polyacrylamide or agarose gels. DNA standards are provided in solution for

normal ranges from 50 bp to 48.5 kb and in convenient pre-made agarose plugs for DNA standards 1 mb and larger.

For a poster size copy of the DNA migration chart below, request bullet in 1813.

### DNA Electrophoresis Standards



#### Standards

<b>A</b> AmpliSize	<b>E</b> $\lambda$ -Hind III	<b>I</b> <i>S. cerevisiae</i>
<b>B</b> pBR322-AvaII/EcoRI	<b>F</b> 5 kb ladder	<b>J</b> <i>H. wingei</i>
<b>C</b> 1.0–4.2 kb ladder	<b>G</b> 8–48 kb	<b>K</b> <i>S. pombe</i>
<b>D</b> 0.7–8.4 kb	<b>H</b> $\lambda$ -ladder	

## Ordering Information

Catalog Number	Description	Quantity
161-0324	<b>Kaleidoscope Prestained Standards</b>	500 µl
161-0325	<b>Kaleidoscope Polypeptide Standards</b>	500 µl
161-0305	<b>Prestained SDS-PAGE Standards, low range</b>	500 µl
161-0309	<b>Prestained SDS-PAGE Standards, high range</b>	500 µl
161-0318	<b>Prestained SDS-PAGE Standards, broad range</b>	500 µl
161-0304	<b>SDS-PAGE Standards, low range</b>	200 µl
161-0303	<b>SDS-PAGE Standards, high range</b>	200 µl
161-0317	<b>SDS-PAGE Standards, broad range</b>	200 µl
161-0326	<b>Polypeptide SDS-PAGE Standards</b>	200 µl
161-0314	<b>Silver Stain SDS-PAGE Standards, low range</b>	200 µl
161-0315	<b>Silver Stain SDS-PAGE Standards, high range</b>	200 µl
161-0330	<b>SDS-PAGE Standards for SYPRO Orange, low range</b>	200 µl
161-0331	<b>SDS-PAGE Standards for SYPRO Orange, high range</b>	200 µl
161-0332	<b>SDS-PAGE Standards for SYPRO Orange, broad range</b>	200 µl
161-0306	<b>Biotinylated SDS-PAGE Standards, low range</b>	250 µl
161-0311	<b>Biotinylated SDS-PAGE Standards, high range</b>	250 µl
161-0319	<b>Biotinylated SDS-PAGE Standards, broad range</b>	250 µl
161-0320	<b>2-D SDS-PAGE Standards</b>	500 µl
161-0310	<b>IEF Standards,</b>	250 µl

### DNA Size Standards

170-8200	<b>AmpliSize DNA Size Standard, 50–2,000 bp ladder</b>	50 appl.
170-3465	<b>DNA Size Standard, <i>Avall</i>/<i>EcoRI</i>-digested pBR322</b>	50 appl.
170-8210	<b>DNA Size Standard, 1.0–4.2 kb ladder</b>	50 appl.
170-8220	<b>DNA Size Standard, mid range, 1–14.1 kb</b>	100 appl.
170-3470	<b>DNA Size Standard, <i>HindIII</i>-digested λ</b>	1,600 appl.
170-3624	<b>CHEF DNA Size Standard, 5 kb ladder</b>	20 µg
170-3707	<b>CHEF DNA Size Standard, 8–48 kb</b>	25 µg
170-3635	<b>CHEF DNA Size Standard, lambda ladder</b>	5 plugs
170-3605	<b>CHEF DNA Size Standard, <i>S. cerevisiae</i> chromosomes</b>	5 plugs
170-3667	<b>CHEF DNA Size Standard, <i>H. wingei</i> chromosomes</b>	5 plugs
170-3633	<b>CHEF DNA Size Standard, <i>S. pombe</i> chromosomes</b>	5 plugs

Coomassie is a trademark of ICI.

SYPRO Orange is a trademark of, and the dye is manufactured by, Molecular Probes Inc.

**BIO-RAD**

**Bio-Rad  
Laboratories**

**Life Science  
Group**

U.S. (800) 4BIORAD California (510) 741-1000 Australia 02-9914-2800 Austria (1) 877 89 01 Belgium 09-385 55 11 Canada (905) 712-2771 China (01)2046622 Denmark 39 17 9947 Finland 90 804 2200 France (1) 49 60 68 34 Germany 089 31884-0 India 91-11-461-0103 Italy 02-21609 1 Japan 03-5811-6270 Hong Kong 7893300 The Netherlands 0318-540666 New Zealand 09-443 3099 Singapore (65) 272-9877 Spain (91) 661 70 85 Sweden 46 (0) 735 83 00 Switzerland 01-809 55 55 United Kingdom 0800 181134