



# The Only Thing it Won't Collect is Dust



Introducing the  
Model 2128 Fraction Collector

**BIO-RAD**



## The Model 2128 Does it All

Designed for analytical to preparative applications, the Model 2128 features racks and adaptors to accommodate practically any size collection vessel. The new Model 2128 Fraction Collector provides advanced collection control options, allowing you to customize your collection methods with time windows and peak collection features.

Easy-to-use software guides you through the creation of a simple "collect entire run" method to a more sophisticated method including the combination of different thresholds within time windows. Help screen options make intuitive operation easy.

```
Rack# 1 Collect All  
Start# 1 End# 128  
Frac Size: 1.00 Min  
READY EDIT DROP MODE
```

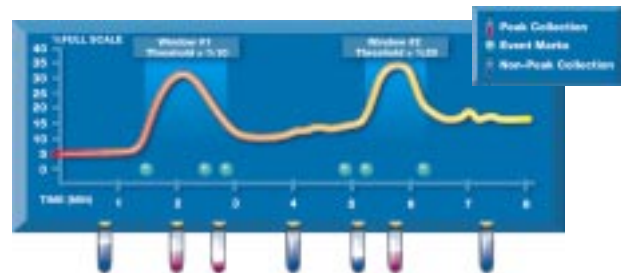




## Collection Options

Utilizing an X, Y motion, two interchangeable racks and two adaptors, the Model 2128 fraction collector collects from microliters to liters at flow rates up to 100 ml/min. The Model 2128 lets you collect into standard test tubes using the standard rack or, by using adaptors, you can collect into microtiter plates, capless microtubes or bottles of any size.

Methods can be programmed by time or drop, using time windows and/or peak detection by UV threshold. Using peak detection, both peak and non-peak fractions can be collected, or non-peak fractions can be diverted to waste or a separate collection vessel. User-friendly software allows you to easily program any collection scheme, including one that runs unattended, over night or over the weekend.



*The Model 2128 facilitates collection of small volumes. Collect into microtubes or microplates using the Micro Adaptor.*

The optional 3-way diverter valve lets you divert flow to any collection vessel. The valve also diverts flow during tube changes, an essential feature when working with small collection volumes or high flow rates.



The Model 2128 lets you exercise your collection options in the cold-room or in a crowded lab. The collector is cold-room compatible and its small footprint conserves space on crowded benchtops.



*The Model 2128 makes it simple to collect preparative fractions. The Prep Adaptor lets you collect large volumes of eluant into bottles of any size.*

# As Easy as A, B, C

## A Dispenser Arm

Arm can be rotated to align with the body of the instrument for compact storage.

## B Tubing Guides

Integral tubing guide eliminates tangled tubing.

## C Drain Trough

When the optional diverter valve is not used, the drain trough collects and discards unwanted eluant.

## D Diverter Valve

The optional diverter valve performs two vital functions: it diverts unwanted eluant to waste, and diverts flow between fraction changes.

## E Rack Alignment Feet

Aligns test tube rack with the side of the fraction collector for trouble-free collection.

## F Help Screens

Help screens quickly answer most common programming questions.

## G Drop Former

Accepts common 1/4-28 fittings for a range of tubing ID sizes.

## H Adjustable Rack

Versatile racks can accommodate tube heights from 54 mm to 180 mm (it's 6 racks in 1!) Additional racks are available for microtubes and microtiter plates.

## I Numbered Tube Positions

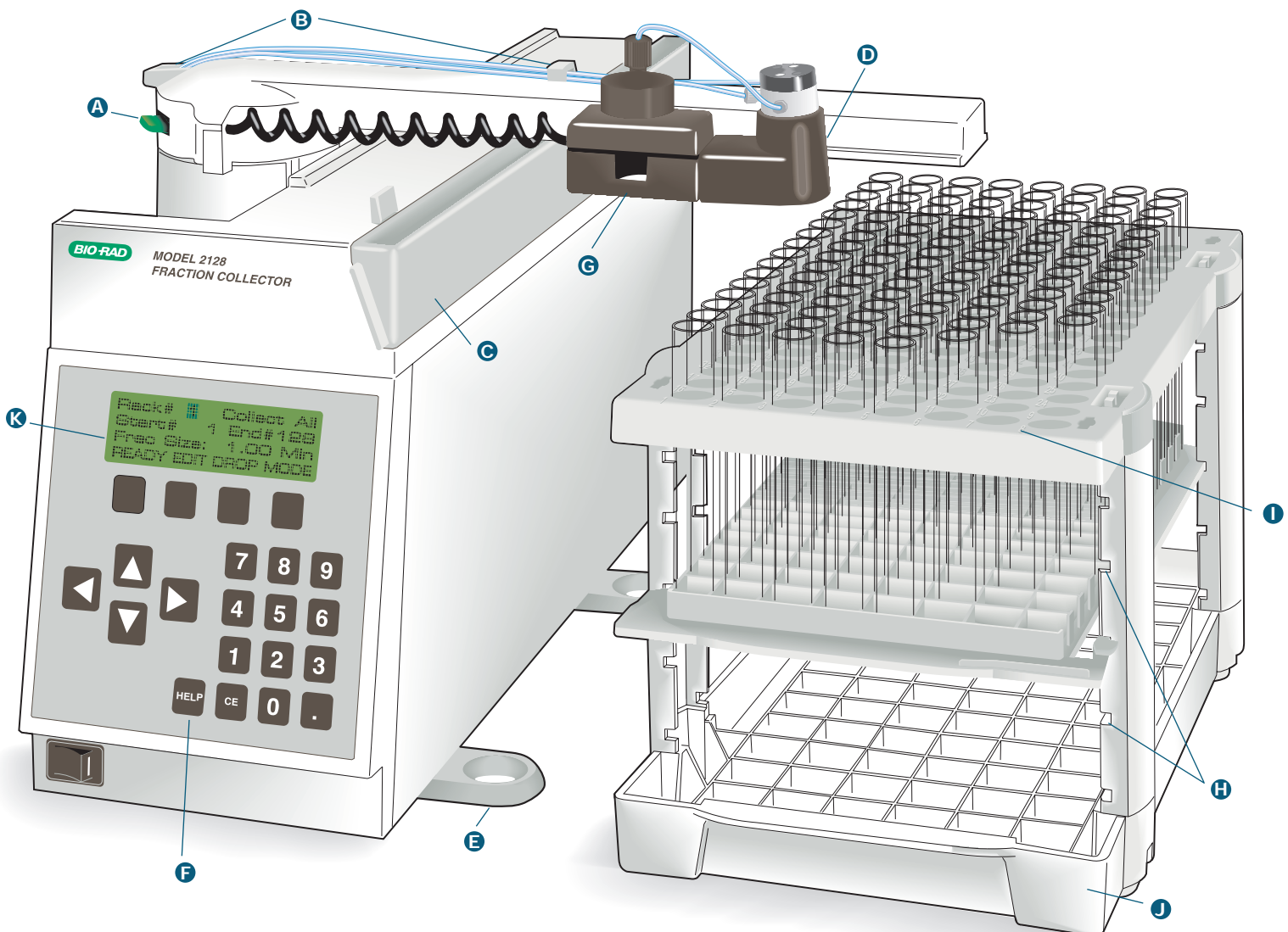
Tube numbers are easily identifiable on the top of the rack. You don't have to hunt for your sample.

## J Removable Rack

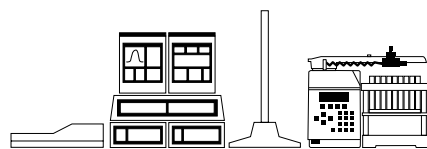
Rack can be stored separately from the main unit to minimize the use of bench space.

## K Menu-Driven Software

Simple to sophisticated collection methods are easy to program.



## Ordering Information



The Model 2128 works with the Econo System through a dedicated ECONO software option. The Model 2128 also operates in a standard mode, for use with other low, medium, or high pressure chromatography systems.

Catalog Number	Description	US List Price
<b>Model 2128 Fraction Collector</b>		
731-8123	<b>Model 2128 Fraction Collector</b> , 110 V, includes Rack #1, 110 V power cable, cable (15-pin to mini-DIN), and fittings.	\$1,795.00
731-8124	<b>Model 2128 Fraction Collector</b> , 220 V, includes Rack #1, cable (15-pin to mini-DIN), and fittings	Inquire
731-8125	<b>Rack #1</b> , accepts 128 - 12 and 13 mm diameter tubes	150.00
731-8126	<b>Rack #2</b> , accepts 78 - 16 to 18 mm diameter tubes	150.00
731-8127	<b>Model 2128 Micro Adaptor</b> , accepts 3 microtiter plates, or 128 microtubes	100.00
731-8128	<b>Model 2128 Prep Adaptor</b> , for preparative collection into 10 collection vessels (max.); includes tygon tubing	150.00
731-8238	<b>Model 2128 Diverter Valve</b> , includes fittings and tubing	250.00
731-8263	<b>Econo System Cable #3</b> , 8-pin mini-DIN to 8-pin mini-DIN, for Econo System control of the Model 2128 Diverter Valve	50.00
731-8286	<b>Econo System Cable #15</b> , 15-pin to mini-DIN, for connection of the Model 2128 fraction collector to the Econo Pump or Econo System Controller	60.00
731-8290	<b>Model 2128 Accessory Cable</b> , 15-pin to bare wires for connection of the Model 2128 fraction collector to equipment other than the Econo System	60.00
731-8291	<b>Model 2128 HPLC Cable</b> , for connection of the Model 2128 to Bio-Rad's HPLC systems	60.00
<b>Collection Tubes*</b>		
223-9751	<b>13 x 100 mm natural polypropylene test tubes</b> , 1000/box	32.65
223-9750	<b>13 x 100 mm clear polystyrene test tubes</b> , 1000/box	32.65
223-9500	<b>1.5 ml Capless Micro Test Tubes</b> , polypropylene, natural, 500/box	15.75

\* Additional tube sizes are available from Bio-Rad. Contact your local Bio-Rad representative for a Liquid Handling catalog.

## Model 2128 Fraction Collector Specifications

<b>Fractionation</b>	Time or drops, (volume, when connected to the Model EP-1 Econo Pump or Econo System) <b>Time:</b> 0.03 - 99.9 min in 0.1 min units <b>Drop:</b> 0 - 999 drops	<b>Rack 2:</b> 16 to 18 mm diameter tubes (78), adjustable for tube heights (54, 75, 100, 125, 150, and 180 mm) <b>Micro Adaptor:</b> 96-well microtiter plates (3) or microtubes (128); mounts on top of Rack #1 <b>Prep Adaptor:</b> Preparative fraction "separator" - up to 10 fractions can be funneled to bottles of any size	<b>Remote Operation:</b> Can be controlled by the Econo System, Bio-Rad's HPLC systems, or other via external commands <b>Wetted Parts:</b> All non-metal, including PTFE, tefzel, PPS, PEEK, KEL-F <b>Operating Temperatures:</b> 4 °C to 40 °C
<b>Operating modes</b>	Time, drop, time windows (20), peak detection, time windows plus peak detection		<b>Dimensions:</b> 30.5 cm x 42 cm x 24 cm (W x D x H) (unit with Rack #1) <b>Weight</b> (without Rack #1) 5.7 kg
<b>Peak detection</b>	Threshold, including detection of maxima/minima for collection of double peaks above a set threshold.	<b>Tube Change Time</b> 330 ms (Rack #1) 450 ms (Rack #2) <b>Detector Input</b> ± 0-10mV, 0-100mV, 0-1V <b>Event Marker</b> TTL: diverter valve mark Contact closure: fraction mark <b>Power Consumption</b> 45W, no external fusing <b>Diverter Valve:</b> Optional 3-way diverter valve mounts next to the drop head to divert flow to the drain trough, or to a collection vessel; minimizes spillage during fraction changes.	<b>Safety Certification</b> Meets I.E.C. 1010 certification
<b>Flow rate capacity</b>	Up to 100ml/min; counts drops up to 5ml/min		
<b>Tube capacity</b>	<b>Rack 1:</b> 12 and 13 mm diameter tubes (128), adjustable for tube heights (54, 75, 100, 125, 150, and 180 mm)		



Bio-Rad  
Laboratories

Life Science  
Group

U.S. (800) 4BIORAD • California Ph. (510) 741-1000 • New York Ph. (516) 756-2575 • Australia Ph. 02-805-5000 • Austria Ph. (1)-877 89 01 • Belgium Ph. 09-385 55 11 • Canada Ph. (905) 712-2771 • China Ph. (01) 2051873 • France Ph. (1) 49 60 68 34 • Germany Ph. 089 31884-0 • Italy Ph. 02-21609 1 • Japan Ph. 03-3534-7665 • Hong Kong Ph. 7893300 • The Netherlands Ph. 08385-40666 • New Zealand Ph. 09-443 3099 • Singapore Ph. (65) 4432529 • Spain Ph. (91) 661 70 85 • Sweden Ph. 46 (0) 8-735 83 00 • Switzerland Ph. 01-810 16 77 • United Kingdom Ph. 0800 181134