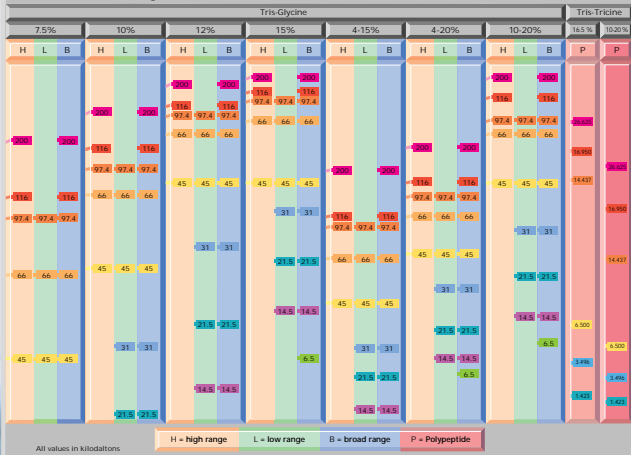


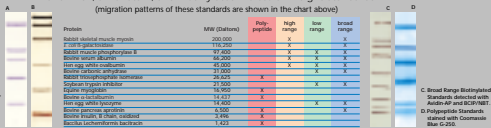
# Protein Standards for Electrophoresis and Blotting

## Migration of Bio-Rad's SDS-PAGE Protein Standards

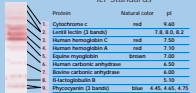


## SDS-PAGE, Silver Stain, and Biotinylated Molecular Weight Standards

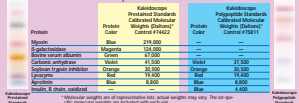
(migration patterns of these standards are shown in the chart above)



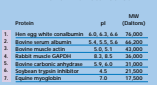
## IEF Standards



## Kaleidoscope Prestained Standards



## 2-D SDS-PAGE Standards



## Prestained SDS-PAGE Standards

