

Economical Antigen Screening with New Mini-Incubation Trays

Blotting has become a routine procedure for biochemical characterization of macromolecules. Electrophoretic transfers are highly controllable and reproducible; antigen screening assays employing this transfer mode are capable of exquisite sensitivity and specificity. Incubation trays are a valuable tool for the antigen screening assay. They insure efficient, economical, and reproducible detection results.

Mini-Incubation Trays Simplify Immunodetection Assays

Protein blotting, from the preparation of the electrophoresis gel to antigen detection, requires a variety of experimental procedures. Most assay steps involve incubation of blotted molecules with a series of reagent solutions. The Mini-Incubation Tray simplifies the screening process by providing an easily accessible reservoir for the incubation process. When a strip of membrane containing the blotted proteins is cut from a membrane sheet, it becomes a delicate sample to handle. The Mini-Incubation Tray isolates each strip in its own trough, where it is exposed for immersion in solutions, and protected from potential handling damage. Using a Mini-Incubation Tray enables you to process multiple samples with minimal handling.



The Mini-Incubation Trays are specially designed for screening antigens that have been separated and blotted using the mini gel format provided by the Mini-PROTEAN® II and Mini Trans-Blot® cells. Each Mini-Incubation Tray has eight 10.5 cm x 5 mm channels to accommodate strips of blotted membrane.

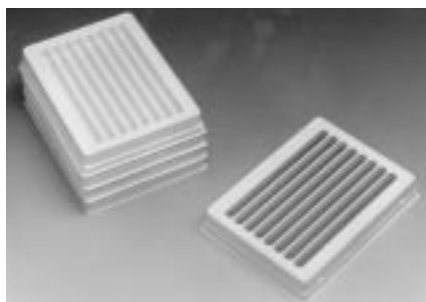
Benefits of Using a Mini-Incubation Tray

- **Expensive Reagents are Conserved.** Immunodetection assays can be performed with as little as 400 µl of antibody solution. Minimal reagent volumes conserve costly antibody solutions.
- **Well-to-Well Contamination is Eliminated.** Ribbs in the tray lid combine with the design of the sample channels to eliminate cross contamination between sample lanes. And since a lid is provided with each tray, contamination during storage is eliminated.

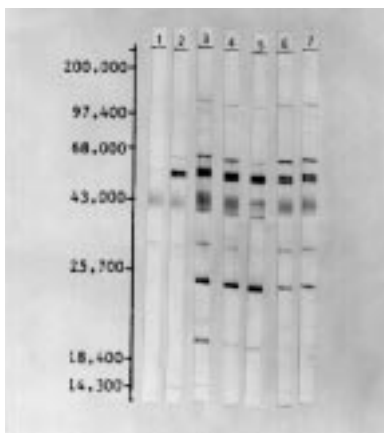
Immun-Blot® assay blotting procedure



SDS-PAGE electrophoresis and electrophoretic transfer



Incubation with detection reagents



Immunodetection results

- **Designed for Use with Multi-Tip Pipettors.** Mini-Incubation Trays are structured to accept 8 channel multi-tip pipettors, for rapid screening of samples from 96-well microplates.
- **Disposable for Simple Elimination of Hazardous Reagents.** Screening hazardous biological samples means equipment must be decontaminated following each assay. Disposable Mini-Incubation Trays eliminate the need to clean the trays.

Bio-Rad is a leader in blotting technology. We offer a complete line of chemicals, membranes, and instruments for all electrophoretic blotting applications. Our Technical Service Representatives are available to answer any question you might have concerning blotting techniques. Call 1-800-4BIORAD, or contact your local Bio-Rad sales office, if you have questions concerning the Mini-Incubation Trays or any of our blotting products.

Ordering Information

Catalog Number	Product Description	Price
Incubation Trays		
Mini-Incubation Trays , eight 10.5 cm x 5 mm wells per tray		
170-3902	Mini-Incubation Trays , 20 trays with lids	\$55.00
170-3903	Mini-Incubation Trays , 100 trays with lids	220.00
Blotting Membranes		
Nitrocellulose , 0.45 micron pore size		
162-0115	Roll, 33 cm x 3 m, 1	155.00
162-0145	Sheets, 7 x 8.4 cm, 10	35.00
Nitrocellulose , 0.2 micron pore size		
162-0112	Roll, 33 cm x 3 m, 1	200.00
162-0146	Sheets, 7 x 8.4 cm, 10	45.00
PVDF , 0.2 micron pore size		
162-0184	Roll, 24 cm x 3.3 m, 1	220.00
162-0180	Sheets, 10 x 15 cm, 10	65.00
Blotting Equipment		
165-2940	Mini-PROTEAN II Cell	475.00
170-3930	Mini Trans-Blot Transfer Cell	355.00
170-3935	Mini Trans-Blot Module	295.00
170-3910	Trans-Blot Transfer Cell	435.00
170-3946	Trans-Blot Cell with Plate Electrodes	525.00
170-3940	Trans-Blot SD Semi-Dry Transfer Cell	625.00
165-4761	Model 200/2.0 Power Supply , 100/120 V, 50/60 Hz	715.00
165-4762	Model 200/2.0 Power Supply , 220/240 V, 50/60 Hz	715.00
170-4017	Mini-PROTEAN II Multiscreen Apparatus	465.00
170-6545	Bio-Dot Dot Blot Apparatus	385.00
170-6542	Bio-Dot SF Slot Blot Apparatus	385.00



Life Science Group

3300 Regatta Boulevard
Richmond, California 94804
Telephone 510 741-1000
Fax: 510 741-1000

Eastern Regional Office, P.O. Box 1225, 85A Marcus Dr., Melville, New York 11747 • Phone (516) 756-2575 • Fax (516) 755-2594
European Headquarters, Bio-Rad Laboratories, Dresse du Saennichal, 19, B-1180 Brussels • Phone 02 375 59 70 • Fax 02 374 61 62
Australia, Bio-Rad Laboratories Pty Limited, Unit 11, 112-118 Talavera Rd P.O. Box 371, North Ryde, N.S.W. 2113 • Phone 02-805-5000 • Fax 02-805-1920
Austria, Bio-Rad Laboratories Ges.m.b.H., Auhofstrasse 78D, A-1130 Wien • Phone 0222-87 79 901 • Fax 0222-87 65 629
Belgium, Bio-Rad Laboratories S.A./N.V., Begoniastraat 5, B-9810 Nazareth • Eke • Phone 091-85 55 11 • Fax 091-85 55 54
Canada, Bio-Rad Laboratories (Canada) Ltd., 5149 Braddock Boulevard, Mississauga, Ontario L4W 2A6 • Phone (416) 624-0713 • Fax (416) 624-3019
China, Bio-Rad Laboratories, Yanshan Hotel Office Tower, #1317, A138 Haidian Road, Beijing • Phone 2564308 • Fax 2568540
France, Bio-Rad S.A., 94/98 rue Victor Hugo, B.P. 220, 94203 Ivry Sur Seine Cedex • Phone 01-49 60 683 4 • Fax 01-46 71 24 67
Germany, Bio-Rad Laboratories GmbH, Heidemarießtraße 164, Postfach 45 01 30, D-8000 München 45 • Phone 089-318 84-0 • Fax 089-318 84 100
Italy, Bio-Rad Laboratories S.r.l., Via Cellini, 18A, I-20090 Segrate Milano • Phone 02-21609.1 • Fax 02-21609-359
Japan, Nippon Bio-Rad Laboratories, K. K., Sumitomo Seimei Kaishiki Bldg 5-3-6 Kaishiki, Chuo-Ku, Tokyo 104 • Phone 03-3534-7515 • Fax 03-3534-8027
The Netherlands, Bio-Rad Laboratories B. V., Fokkerstraat 10, 3905 KV Veenendaal • Phone 08085-40686 • Fax 08085-42216
New Zealand, Bio-Rad Laboratories, Pty Ltd., P. O. Box 100-051, North Shore Mail Centre, Auckland 10 • Phone 09-443 3099 • Fax 09-443 3097
Pacific, Bio-Rad Laboratories, Unit 1111, 11/F, New Kowloon Plaza, 38, Tai Kok Tsui Road, Tai Kok Tsui, Kowloon, Hong Kong • Phone 7828300 • Fax 7891257
Spain, Bio-Rad Laboratories, S. A. Avda Valdelepinos 3, Pol. Ind. Alcobendas, E-28100 Alcobendas, Madrid • Phone (91) 661 70 85 • Fax (91) 661 96 98
Switzerland, Bio-Rad Laboratories AG, Kanalstrasse, 17, CH-8152 Glattbrugg • Phone 01-810 16 77 • Fax 01-810 19 33
United Kingdom, Bio-Rad Laboratories Ltd., Bio-Rad House, Maylands Avenue, Harnet Hempstead, Herts HP2 7TD • Phone 0800 181134 • Fax 0442 259118