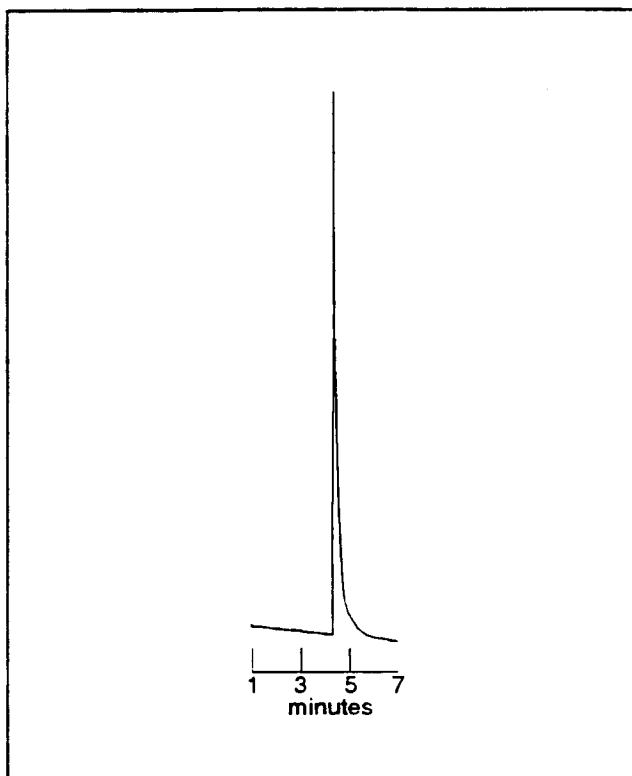


## Human Monocomponent Insulin

Application  
Note: 41

Capillary electrophoresis can be used for checking the purity of bioengineered pharmaceuticals such as human insulin. The electropherogram below shows a single peak detected in five minutes for human insulin synthesized by yeast.



Data provided by Dr. David Begley, King's College London

<b>Capillary:</b>	20 cm x 25 $\mu$ m, coated
<b>Buffer:</b>	0.1M sodium phosphate, pH 2.5
<b>Load Conditions:</b>	6 kV, 4 seconds
<b>Run Conditions:</b>	8 kV, constant voltage, $\oplus \rightarrow \ominus$ polarity
<b>Detection:</b>	UV, 200 nm, 0.02 AUFS