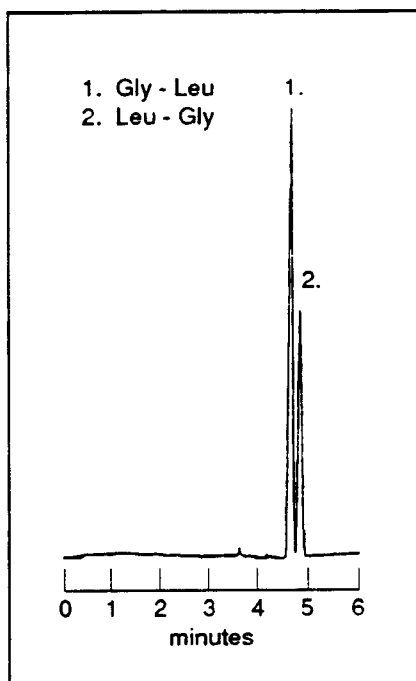


Dipeptide Separation

Application
Note: 38

Glycyl-L-leucine and leucyl-glycine are identical in amino acid content and molecular weight. Yet their slightly different configurations permit separation by capillary electrophoresis.



Data provided by Dr. David Begley, King's College London

Capillary:	20 cm x 25 μ m, coated
Buffer:	0.1M sodium phosphate, pH 2.5, linear polymers
Load Conditions:	4 kV, 4 seconds
Run Conditions:	8 kV, constant voltage, $\oplus \rightarrow \ominus$ polarity
Detection:	UV, 200 nm, 0.02 AUFS