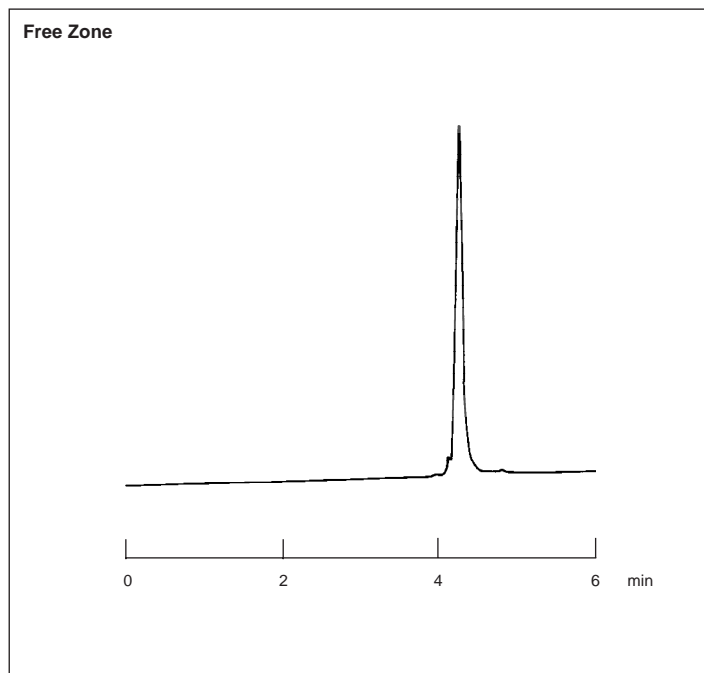
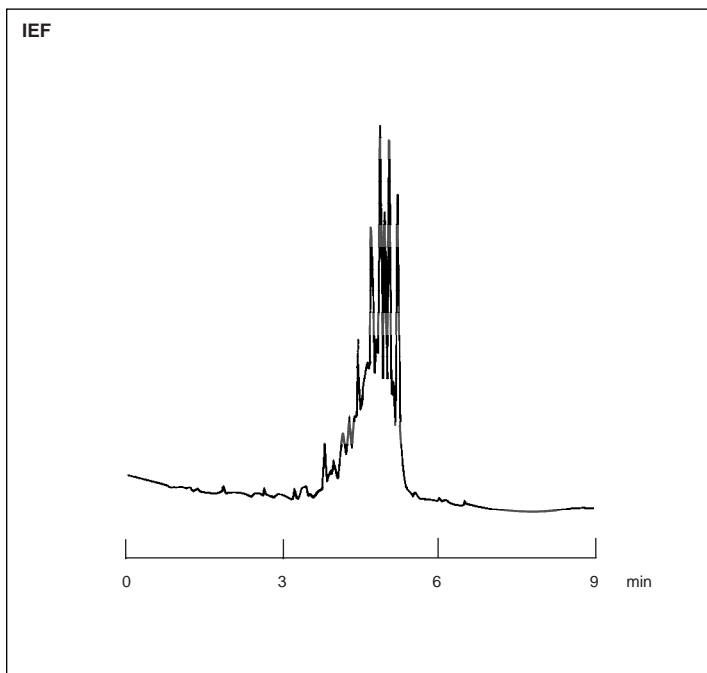


Human Serum Albumin

Application
Note: 19

Because of its stability and availability at low cost and high purity, serum albumin is widely used as a calibration standard in bioanalytical methods. Human serum albumin (HSA) consists of a single polypeptide chain of 584 amino acids and has been well characterized. Serum levels of this transport protein are frequently measured and correlated with various disease states. Capillary electrophoresis allows rapid detection of HSA and its isoforms by isoelectric focusing and free zone methods.



Capillary: 12 cm x 25 μm , coated
Buffer: Bio-Lyte[®] ampholytes
Catholyte: 0.01 M phosphoric acid
Anolyte: 0.02 M NaOH
Mobilizer: 0.08 M NaCl and
0.02 M NaOH
Focusing conditions: 6 kV, constant voltage, positive polarity
Mobilization: 7 kV, constant voltage, positive polarity
Detection: UV, 280 nm, 0.02 AUFS

Capillary: 20 cm x 25 μm , coated
Buffer: 0.1 M phosphate, pH 2.5
Load conditions: 5 kV, 4 seconds
Run conditions: 6 kV, constant voltage, positive polarity
Detection: UV, 200 nm, 0.05 AUFS