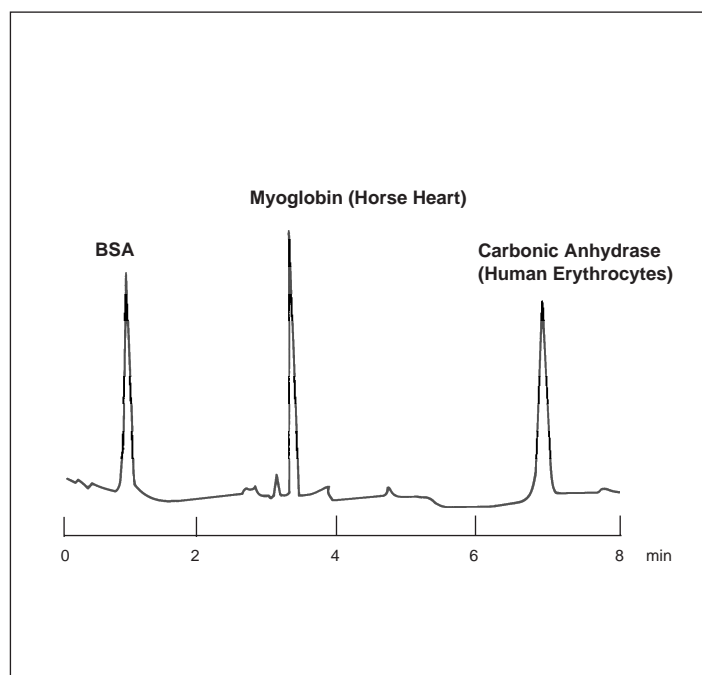


Separation of Albumin, Myoglobin, and Carbonic Anhydrase

Under acidic conditions, many proteins aggregate and precipitate or there may be insufficient difference in their mass-to-charge ratios to achieve good separation by capillary electrophoresis. Often protein separations may be enhanced by running the sample under basic conditions. Coated capillaries reduce electroendosmosis and protein adsorption to the capillary wall, allowing rapid separation at alkaline pH.



Capillary:	12 cm x 25 μ m, coated
Buffer:	0.1 M Tris borate, pH 8.5, zwitterion additives
Load conditions:	8 kV, 8 seconds
Run conditions:	8 kV, constant voltage, negative polarity
Detection:	UV, 200 nm, 0.02 AUFS