

Aurum™ Serum Protein Mini Kit

Protocol Overview

For complete protocol, consult instruction manual.

Column Setup

1. Place serum protein column in a test tube for 5 min to allow resin to settle.
2. Remove cap and break tip from column and return to test tube to start gravity flow in column.
3. Wash column with 1 ml of serum protein binding buffer using gravity flow. Repeat.
4. Place column in empty 2.0 ml collection tube and centrifuge for 20 sec at 10,000 x g to dry resin bed. **Discard collection tube.**
5. Place a yellow column tip on bottom of column and place into a clean 2.0 ml collection tube labeled "unbound".

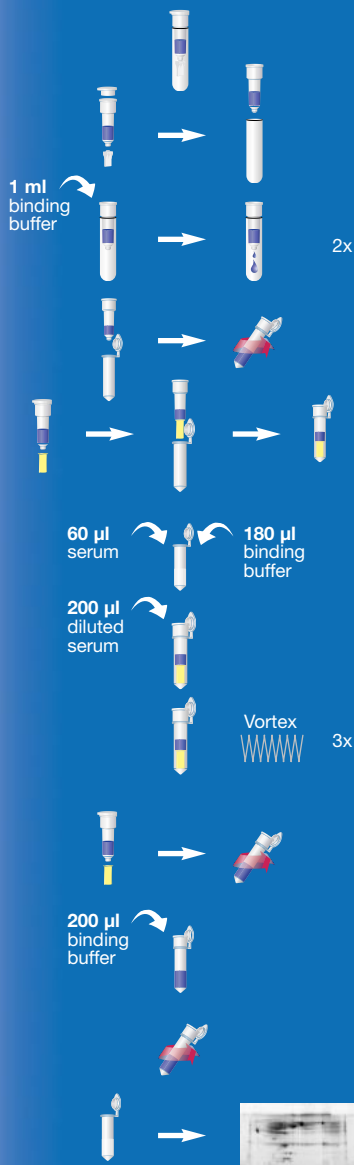
Sample Binding and Purification

6. In a separate tube, prepare sample by diluting 60 μ l serum or plasma with 180 μ l of serum protein binding buffer.
7. Add 200 μ l of diluted serum to top of resin bed in column.
8. Gently vortex column and repeat after 5 and 10 min. **Allow column to sit an additional 5 min.**

Collection of Purified Samples

9. Remove yellow tip from column and return to tube. Centrifuge column for 20 sec at 10,000 x g, collecting protein fraction in "unbound" collection tube.
10. Using same collection tube, wash column with 200 μ l of serum protein binding buffer.
11. Centrifuge column for 20 sec at 10,000 x g, collecting protein fraction in same "unbound" collection tube. Discard serum protein column.
12. The combined fractions contain the albumin- and IgG-depleted serum or plasma sample. The sample is now ready for gel analysis.

Aurum



Aurum Serum Protein Mini Kit: Cat. #732-6701

For more information, call Technical Support at 1-800-4BIORAD (1-800-424-6723). Visit us on the Web at www.bio-rad.com/aurum/