

Bio-Plex Pro™ Human Inflammation Assays

Instruction Manual

For technical support, call your local Bio-Rad office, or in the U.S., call 1-800-424-6723.
For research use only. Not for diagnostic procedures.



BIO-RAD

Table of Contents

Introduction	1
Principle	2
Kit Contents and Storage	4
Recommended Materials	5
Assay Workflow	6
Important Considerations	7
Detailed Instructions	7
1. Plan Plate Layout	8
2. Prepare Instrument	9
3. Prepare Wash Method	10
4. Preparing Buffer and Diluent	11
5. Prepare Standards and Controls	11
6. Prepare Samples	13
7. Prepare Coupled Beads	17
8. Run Assay	18
9. Read Plate	22
Troubleshooting Guide	29
Plate Layout Template	34
Calculation Worksheet	35
Safety Considerations	37
Legal Notices	37
Ordering Information	38

Introduction

Cytokines are low molecular weight proteins that are generated mostly by immune cells and in turn play crucial roles in a cascade of vascular changes, including the differentiation, maturation, and activation of various immune cells. These cytokines may exert either pro- or anti-inflammatory effects, depending on the nature of the activating or inhibitory signal and timing. Inflammatory processes resulting from the secretion of these cytokines lead to various manifestations in skin, joints, and other tissues, as well as altered cytokine homeostasis. These processes are required for a healthy immune response. However, they are also responsible for many pathological conditions, such as autoimmune, neurological, cardiovascular, and metabolic disorders, as well as tumor proliferation. Chief among the immune cells are the regulatory T cells (Tregs), which are known to modulate the immune system by maintaining tolerance to self-antigens and limiting autoimmune and chronic inflammatory diseases.

The Bio-Plex Pro™ human inflammation panel I consists of a wide range of assays to facilitate the study of pro- and anti-inflammatory cytokines in various pathophysiological conditions. These assays provide a tool to study the impact of Tregs on clinical diseases, to evaluate the mechanism of action of investigational agents. The assays can also facilitate the drug discovery process by studying efficacy and toxicity. The assays are compatible with a wide variety of sample matrices, including serum, plasma, and culture supernatant. For researchers working with limited sample volume, the capacity to multiplex will provide an effective option over the traditional ELISA method.

Multiplexing with Bio-Plex Pro Human Inflammation Assays

These assays enable researchers to quantify multiple protein biomarkers in a single well of a 96-well plate in just 3–4 hours. These robust immunoassays require as little as 12.5 µl of serum or plasma or 50 µl of other biological fluid. The use of magnetic (MagPlex) beads allows researchers to automate wash steps on a Bio-Plex Pro (or similar) wash station. Magnetic separation offers greater convenience and reproducibility compared with vacuum filtration.

For more information, please visit www.bio-rad.com/bio-plex.

Principle

Technology

The Bio-Plex® multiplex system is built upon the three core elements of xMAP technology:

- Fluorescently dyed magnetic microspheres (also called beads), each with a distinct color code or spectral address to permit discrimination of individual tests within a multiplex suspension. This allows simultaneous detection of up to 500 different molecules in a single well of a 96-well microplate on the Bio-Plex® 3D system, up to 100 different molecules on the Bio-Plex® 200 system, and up to 50 different molecules on the Bio-Plex® MAGPIX™ system
- A dedicated plate reader. The Bio-Plex 200 and Bio-Plex 3D systems are flow cytometry–based instruments with two lasers and associated optics to measure the different molecules bound to the surface of the beads. In the Bio-Plex MAGPIX system, the sample is injected into a chamber where the beads are imaged using LED and CCD technology
- A high-speed digital signal processor that efficiently manages the fluorescence data

Assay Format

Bio-Plex Pro™ assays are essentially immunoassays formatted on magnetic beads. The assay principle is similar to that of a sandwich ELISA (Figure 1). Capture antibodies directed against the desired biomarker are covalently coupled to the beads. Coupled beads react with the sample containing the biomarker of interest. After a series of washes to remove unbound protein, a biotinylated detection antibody is added to create a sandwich complex. The final detection complex is formed with the addition of streptavidin-phycoerythrin (SA-PE) conjugate. Phycoerythrin serves as a fluorescent indicator, or reporter.

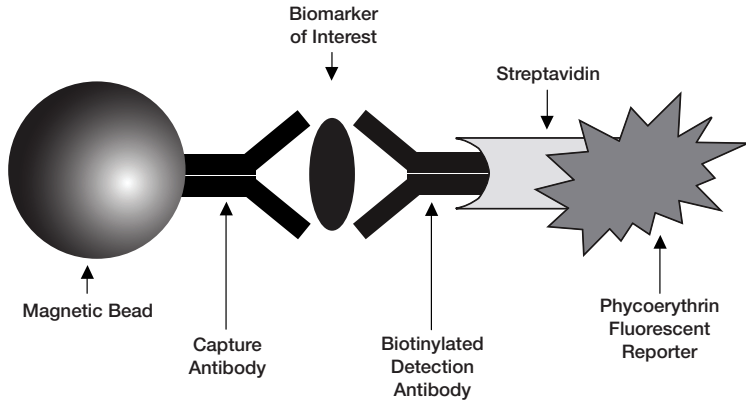


Fig. 1. Bio-Plex sandwich immunoassay.

Data Acquisition and Analysis

Data from the reactions are acquired using a Bio-Plex system or similar Luminex-based reader. When a multiplex assay suspension is drawn into the Bio-Plex 200 reader, for example, a red (635 nm) laser illuminates the fluorescent dyes within each bead to provide bead classification and thus assay identification. At the same time, a green (532 nm) laser excites PE to generate a reporter signal, which is detected by a photomultiplier tube (PMT). A high-speed digital processor manages data output, and Bio-Plex Manager™ software presents data as median fluorescence intensity (MFI) as well as concentration (pg/ml). The concentration of analyte bound to each bead is proportional to the MFI of reporter signal.

Using Bio-Plex Data Pro™ software, data from multiple instrument runs can be combined into a single project for easy data management, quick visualization of results, and simple statistical analysis.

Kit Contents and Storage

Reagents Supplied

Bio-Plex Pro™ human inflammation assays are available in a convenient all-in-one kit format that includes assay, reagent, and diluent components in a single box.

Table 1. Contents of 1 x 96-well kits.

Component	Quantity**
Coupled magnetic beads (10x)	1 tube
Detection antibodies (10x)	1 tube
Standards	1 vial
Quality control*	1 vial
Sample diluent HB	1 bottle (30 ml)
Detection antibody diluent HB	1 bottle (3.5 ml)
Standard diluent HB	1 bottle (10 ml)
Assay buffer	1 bottle (50 ml)
Wash buffer (10x)	1 bottle (60 ml)
Streptavidin-PE (100x)	1 tube
Assay plate (96-well flat bottom plate)	1 plate
Sealing tape	1 pack of 4
Assay quick guide	1 booklet
Product data sheet	1 sheet

* Provided with the premixed panel only.

** Volumes shown are approximate.

Storage and Stability

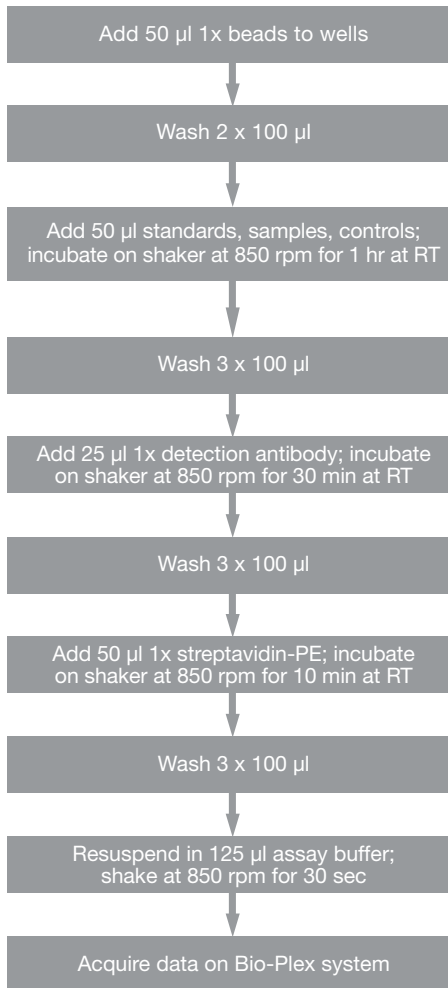
Kit contents should be stored at 4°C and never frozen. Coupled magnetic beads and streptavidin-PE should be stored in the dark. All components are guaranteed for a minimum of six months from the date of purchase when stored as specified.

Table 2. Recommended materials.

Item	Ordering Information
Bio-Plex Pro Inflammation Assays Quick Guide	Bulletin #10044281 (download at www.bio-rad.com/bio-plex)
Bio-Plex® MAGPIX™, Bio-Plex Manager™	Bio-Rad catalog #171-015001
Bio-Plex validation kit Note: Run the validation kit monthly to ensure optimal performance of fluidics and optics systems	Bio-Rad catalog #171-203001
Bio-Plex calibration kit Note: Run the calibration kit daily to standardize fluorescence signal	Bio-Rad catalog #171-203060
Bio-Plex Pro wash station For use with magnetic bead-based assays only	Bio-Rad catalog #300-34376
Bio-Plex handheld magnetic washer For use with magnetic bead-based assays only	Bio-Rad catalog #170-20100
Bio-Plex Pro flat bottom plates (40 x 96-well) For magnetic separation on the Bio-Plex Pro wash station	Bio-Rad catalog #171-025001
Titertube® micro test tubes For preparing replicate standards, samples, and controls prior to loading the plate	Bio-Rad catalog #223-9390
Microtiter plate shaker IKA MTS 2/4 shaker for 2 or 4 microplates or Barnstead/Lab-Line Model 4625 plate shaker (or equivalent capable of 300–1,100 rpm)	IKA catalog #320-8000 VWR catalog #57019-600
BR-2000 vortexer	Bio-Rad catalog #166-0610
Reagent reservoirs, 25 ml For capture beads and detection antibodies	VistaLab catalog #3054-1002 or VistaLab catalog #3054-1004
Reagent reservoir, 50 ml (for reagents and buffers)	VistaLab catalog #3054-1006
Pall Life Science Acrodisc: 25 mm PF syringe filter (0.8/0.2 µm Supor membrane)	Pall Life Sciences catalog #4187

Other: 5 or 15 ml polypropylene tubes for reagent dilutions, calibrated pipets, pipet tips, sterile distilled water, aluminum foil, absorbent paper towels, 1.5 or 2 ml microcentrifuge tubes, and standard flat bottom microplate (for calibrating vacuum manifold).

Assay Workflow



Notes on sample preparation: Once thawed, keep samples on ice. Prepare dilutions just prior to the start of the assay and equilibrate to room temperature before use.

Important Considerations

Instruments and Software

The Bio-Plex Pro™ assays described in this manual are compatible with all currently available Luminex-based life science research instruments. Assays can be read and analyzed with either Bio-Plex Manager™ software or Luminex xPONENT software (see the Run Assay section).

Assay Procedures

Please pay close attention to vortexing, shaking, and incubation times and to Bio-Plex® reader PMT (RP1) setting, as these have been optimized specifically for each assay panel.

Assay Quick Guide

Each assay kit comes complete with a printed Bio-Plex Pro™ Assay Quick Guide (bulletin #10044281), which can be used to prepare and run a full 1 x 96-well assay plate. Users can also download a copy at www.bio-rad.com/bio-plex.

Bead Regions and Multiplexing Compatibility

- Bead regions for all analytes are listed in the Read Plate section
- Do not mix analytes between different Bio-Plex panels or reagent kits. Resulting standard curves and sample values may be inaccurate. This kit uses Bio-Plex Pro reagent kit III.

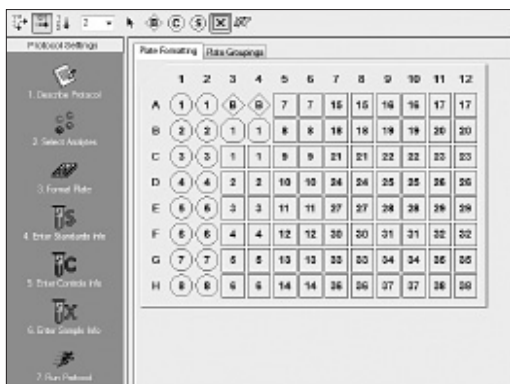
Detailed Instructions

The following pages provide detailed instructions for each step of the assay procedure, including preparation, running the assay, and reading the plate with Bio-Plex Manager™ and Luminex xPONENT software.

1. Plan Plate Layout

Determine the total number of wells in the experiment using the Plate Layout Template on page 34 or the Plate Formatting tab in Bio-Plex Manager™. A suggested plate layout is shown in Figure 2, with all conditions in duplicate.

1. Assign standards to columns 1 and 2, with the highest concentration in row A and the lowest concentration in row H.
2. Assign the blank to wells A3 and A4. The blank should consist of your chosen standard diluent HB. Note that Bio-Plex Manager automatically subtracts the blank (B) MFI value from all other assay wells.
3. User-specified controls, as well as the controls supplied in premixed kits, are assigned to wells in columns 3 and 4.
4. The remainder of the plate is available for samples.
5. Once the total number of wells is known, you can calculate the required volumes of beads, detection antibody, and streptavidin-PE. Use Tables 6–7, 9–10, and 11, respectively, or the Calculation Worksheet on pages 35–36.



Legend




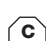
-  **Standard**
-  **Blank**
-  **Samples**
-  **Controls**

Fig. 2. Suggested plate layout. For detailed instructions on plate formatting in Bio-Plex Manager, see the Read Plate section.

2. Prepare Instrument



These directions are specific for the Bio-Plex® 100/200 reader. To prepare either a Bio-Plex 3D or Bio-Plex® MAGPIX™ reader, consult their respective user manuals.

Note: While the instrument is warming up, bring the 10x wash buffer, assay buffer, and diluents to room temperature. Keep other items on ice until needed. Also, begin to thaw frozen samples.


Start up and calibrate the Bio-Plex system with Bio-Plex Manager™ software prior to setting up the assay. The calibration kit should be run daily or before each use of the instrument to standardize the fluorescent signal. For instructions on using other xMAP system software packages, contact Bio-Rad Technical Support.


The validation kit should be run monthly to ensure optimal performance of fluidics and optics systems. Refer to either the software manual or online Help for directions on how to conduct validation.

Start Up System (Bio-Plex 100, 200, or similar)

1. Empty the waste bottle and fill the sheath fluid bottle before starting if high throughput fluidics (HTF) are not present. This will prevent fluidics system backup and potential data loss.
2. Turn on the reader, XY platform, and HTF (if included). Allow the system to warm up for 30 min (if not already done).
3. Select **Start up**  and follow the instructions. If the system is idle for 4 hr without acquiring data, the lasers will automatically turn off. To reset the 4-hr countdown, select **Warm up**  and wait for the lasers/optics to reach operational temperature.

Calibrate System

1. Select **Calibrate**  and confirm that the default values for CAL1 and CAL2 are the same as the values printed on the bottle of Bio-Plex calibration beads. Use the Bio-Plex system low RP1 target value.
2. Select **OK** and follow the software prompts for step-by-step instructions for CAL1 and CAL2 calibration.

Note: In Bio-Plex Manager version 6.1 and higher, startup, warm up, and calibration can be performed together by selecting the **Start up and calibrate** icon. 

3. Prepare Wash Method

Bio-Plex Pro™ assays are compatible with both magnetic separation and vacuum filtration methods. However, for best results, we recommend performing the assays in a flat bottom plate with magnetic separation.

Table 3. Summary of compatible wash stations and plate types.

Wash Method	Wash Station	Assay Plate
Magnetic separation	Bio-Plex Pro Bio-Plex® handheld magnetic washer	Flat bottom plate

Setting Up the Bio-Plex Pro Wash Station

The wash station should be primed before use. For more information, refer to the Bio-Plex Pro Wash Stations Quick Guide (bulletin #5826).

1. Install the appropriate plate carrier on the wash station.
2. Use the Prime procedure to prime channel 1 with 1x wash buffer.

Setting Up the Bio-Plex Handheld Magnetic Washer

Place an empty flat bottom plate on the magnetic washer by sliding it under the retaining clips. Push the clips inward to secure the plate. Make sure the plate is held securely. If needed, the clips can be adjusted for height and tension. For detailed instructions, refer to the user guide (bulletin #10023087).

4. Preparing Buffer and Diluent

Prepare Wash Buffer

1. Bring the 10x stock solution to room temperature.
2. If crystals are present, ensure that they are completely dissolved. Mix the 10x stock solution by inversion before preparing the 1x wash buffer.
3. To prepare 1x wash buffer, dilute 1 part 10x stock solution with 9 parts deionized water.

5. Prepare Standards and Controls

General Instructions

- It is essential to prepare standards and quality controls (if included) exactly as described in this section. Incorrect preparation may lead to low signal or variable measurements from plate to plate
- The product data sheet provided with the standards lists the most concentrated point on the standard curve (S1). Enter this information into Bio-Plex Manager™ software as instructed in section 9

Using the Quality Controls (optional)

A single vial of control is provided with the premixed panels only. Their use is intended for monitoring the day-to-day quality of assay results.

Selecting a Diluent for Standards and Controls

Refer to Table 4 for recommended diluents based on different sample types.

In order to meet the lot-specific control ranges provided on the product data sheet, both the standards and controls should be reconstituted in Bio-Plex® standard diluent HB. If reconstituting in a different diluent, users will need to establish/validate their own control ranges or acceptance criteria.

Table 4. Summary of recommended diluents for standards and controls.

Sample Type	Diluent for Standards and Controls*	Add BSA
Serum and plasma	Standard diluent HB	None
Culture media, with serum	Culture medium	None
Culture media, serum-free	Culture medium	To 0.5% final**
Lavage, sputum, other fluids	Sample diluent HB	To 0.5% final**

* If using diluents other than standard diluent HB, users must establish their own control ranges.

** At least 0.5% final BSA is recommended to stabilize analytes and reduce adsorption to labware.

Reconstitute Standards and Quality Controls

This procedure prepares enough standard to run each dilution in duplicate.

Note: The appearance of the lyophilized standards or control may vary from a white pellet to clear crystals. Regardless of appearance, the vials have passed QC specifications and perform accordingly.

1. Gently tap the vial containing the lyophilized standards on a solid surface to ensure the pellet is at the bottom of the vial.
2. Reconstitute a single vial of standards with **781 µl** of the appropriate diluent.

Optional: at the same time, reconstitute the control vial with **250 µl** of the appropriate diluent as summarized in Table 4. **The control does not require further dilution.**

3. **Vortex** the reconstituted standards and control at medium speed for **5 sec**, then incubate **on ice for 30 min**. It is important that reconstitution of standards and control is started and ended at the same time. Be consistent with this incubation time to ensure optimal assay performance and reproducibility.

Prepare the Standard Dilution Series

The following procedure produces an eight-point standard curve with a threefold dilution between each point. Pipet carefully using calibrated pipets and use a new pipet tip for every volume transfer.

1. Label eight 1.5 ml polypropylene tubes S2 through S8 and Blank. Alternatively, using Titertube® micro test tubes may prove to be more convenient if a multichannel pipet will be used to load the plate.

2. Add **150 μ l** of the appropriate diluent to tubes S2–S8 (Figure 3).
3. **Vortex** reconstituted standards at medium speed for **5 sec** before removing any volume. Transfer **75 μ l** to the S2 tube containing the chosen diluent. **Vortex** for **5 sec**.
4. Use a new pipet tip to transfer **75 μ l** from the S2 tube to the S3 tube. **Vortex** for **5 sec**.
5. Continue with 1:3 (threefold) serial dilutions as shown in Figure 3.
6. Use reconstituted and diluted standards and controls immediately. Do not freeze for future use.

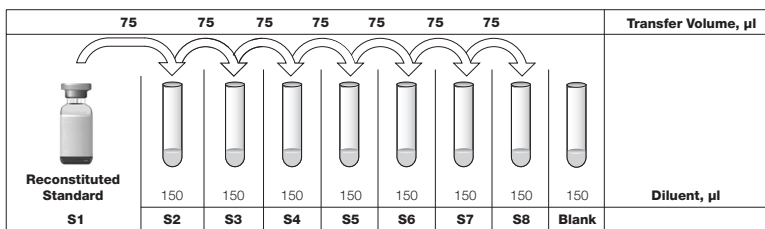


Fig. 3. Preparing a threefold dilution series with a single reconstituted standard.

Note: For samples with very low endogenous analytes, prepare one additional standard point (S9) to extend the bottom end of the standard curve.

6. Prepare Samples

General guidelines for preparing different sample types are provided here. For more information, consult publications listed in Bio-Rad bulletin #5297, available for download at www.bio-rad.com, or contact Bio-Rad Technical Support.

- Once thawed, keep samples on ice. Prepare dilutions just prior to the start of the assay and equilibrate to room temperature before use
- Prepare sample dilutions in microcentrifuge tubes. Alternatively, if a multichannel pipet will be used to load the plate, aliquot the required volumes into Titertube® micro test tubes
- Do not freeze diluted samples

Table 5. Summary of recommended sample diluents and dilution factors.

Sample Type	Dilution Factor	Diluent
Serum and plasma	1:4 dilution	Sample diluent HB
Fluids	1:4 dilution	Diluent + 0.5% BSA w/v

Serum and Plasma

Note: If using plasma, EDTA or citrate is preferred as an anticoagulant. Heparin-treated plasma, while compatible with Bio-Plex Pro™ assays, may absorb certain soluble proteins of interest. Avoid using hemolyzed samples, as this may lead to false positive results.

1. Draw whole blood into collection tubes containing anticoagulant. Invert tubes several times to mix.
2. For serum, allow blood to clot at room temperature for **30 to 45 min**. For plasma, proceed directly to the centrifugation steps.
3. Perform centrifugation at 1,000 x g for **15 min** at 4°C and transfer the serum or plasma to a clean polypropylene tube.
4. To completely remove platelets and precipitates, centrifuge again at 10,000 x g for **10 min** at 4°C. Alternatively, filter the samples with a 0.8/0.2 µm dual filter to prevent clogging.
5. Dilute samples four-fold (1:4) by adding 1 volume of sample to 3 volumes of Bio-Plex® sample diluent HB (for example, **50 µl** sample + **150 µl** sample diluent HB).
6. Assay samples immediately or aliquot into single-use tubes and store at -70°C. Avoid repeated freeze-thaw cycles.

Cell Culture Supernatant

1. Collect supernatants by pelleting cells at 1,000 x g for **15 min** at 4°C. For cell lines cultured in serum-free culture media, collect samples and add BSA as a carrier protein to a final concentration of at least 0.5% to stabilize protein analytes and to prevent adsorption to labware.
2. Transfer to a clean polypropylene tube. If cellular debris or precipitates are present, centrifuge again at 10,000 x g for **10 min** at 4°C.

3. We recommend testing undiluted samples first. If high levels of analyte are expected, samples can be further diluted in culture medium. Rarely would samples need to be diluted greater than 1:10.
4. Assay immediately or store samples in single-use aliquots at -70°C . Avoid repeated freeze-thaw cycles.

Cell Lysates

The Bio-Plex Pro™ cell signaling reagent kit (catalog #171-304006M) is required for preparing lysates derived from cell culture and tissue samples. Just before use, prepare an adequate volume of cell lysis buffer by adding PMSF and cell lysis factor QG.

- Prepare 500 mM PMSF by dissolving 0.436 g PMSF in 5 ml DMSO. (Store as aliquots at -20°C). Add PMSF to the cell lysis buffer at a final concentration of 2 mM
- Reconstitute cell lysis factor QG to 100x with 250 μl of dH_2O and vortex to mix. Add the reconstituted factor to the cell lysis buffer to a final 1x working concentration

Adherent Cells

1. Stop the treatment reaction by aspirating the culture medium and quickly rinsing the cells with ice-cold cell signaling **cell wash buffer** (bottle with the **blue cap**). The volume of buffer required is the same as the volume of aspirated cell culture medium. Keep the cells on ice during all steps when possible.
2. Completely remove the buffer before lysing the cells.
3. Immediately add the cell lysis buffer to the cells. The amount of lysing solution needed depends on the cell density in the culture vessel (for example, add 1.5–2 ml of lysis buffer to a 10 cm dish that is ~80% confluent).

Note: It may be necessary to lyse the samples with different volumes of cell lysis solution to obtain the specified protein concentration range.

4. Scrape the cells with a cell scraper, collect cell suspension into an appropriately sized tube and gently rock for 20 min at 4°C .

5. Perform either of the following to remove insoluble cellular particulates:
 - Centrifuge the cell lysate solution at 4,500 x g for 20 min at 4°C, and then filter the lysate using a 0.45 µm syringe filter
 - If the lysate volume is not adequate for filtration, centrifuge the lysate at 15,000 x g for 10 min at 4°C using a benchtop microcentrifuge
6. Collect the filtered lysate or supernatant after centrifugation.
7. Measure protein concentration using Bio-Rad's *DC*[™] protein assay kit and if needed, adjust protein concentration with cell lysis buffer containing PMSF and cell lysis factor QG.
8. The suggested working protein concentration range for these assays is 200–900 µg/ml (10–45 µg per assay well).
9. Store the aliquoted lysates at –70°C until ready to use

Suspension Cells

1. Collect cell suspension and pellet the cells by spinning at 1,000 x g for 5 min at 4°C.
2. Aspirate off cell culture medium completely.
3. Wash by resuspending the cells with ice-cold **cell wash buffer** (bottle with the **blue cap**).
4. Centrifuge the cells at 1,000 x g for 5 min at 4°C.
5. Completely remove the buffer.
6. Immediately add the proper volume of cell lysis buffer and gently rock for 20 min at 4°C.
7. Remove insoluble cellular particulates as described in Adherent Cells step 5 above.
8. Follow Adherent Cells steps 6–9 above.

Tissue Samples

1. Cut the tissue into small pieces (~3 x 3 mm) for ease of handling and blood removal. If necessary, wash the tissue with ice-cold **cell wash buffer** (bottle with the **blue cap**) to completely remove all blood. Then transfer the tissue to a 2 ml tissue grinder.

2. Add an adequate volume of cell lysis solution and grind the tissue sample on ice using approximately 20 strokes.

Note: It may be necessary to lyse the samples with different volumes of cell lysis solution to obtain the specified protein concentration range.

3. Transfer the ground tissue to a clean microcentrifuge tube and freeze sample at -70°C . Freezing and thawing samples helps increase cell lysis effects.
4. Thaw the sample and sonicate on ice (for example, with a Sonifier 450: Duty Cycle = 40, Output = 1, Pulse Sonicating = 18x).
5. Remove insoluble cellular matter as in Adherent Cells step 5 above.
6. Follow Adherent Cells steps 6–9 above.

Lavage, Sputum, and Other Biological Fluid Samples

Keep all samples on ice until ready for use. The appropriate sample dilution factor should be optimized by the user.

1. If required, dilute the sample in Bio-Plex sample diluent HB with BSA added to a final concentration of 0.5%.
2. Centrifugation at $10,000 \times g$ for **10 min** at 4°C may be required to clarify the sample.

7. Prepare Coupled Beads

1. Use Tables 6–7 or the Calculation Worksheet on pages 35–36 to calculate the volume of coupled beads and assay buffer needed to prepare a 1x stock.
2. Add the required volume of Bio-Plex[®] assay buffer to a 15 ml polypropylene tube.

3. **Vortex** the 10x stock of coupled beads at medium speed for **30 sec**. Carefully open the cap and pipet any liquid trapped in the cap back into the tube. This is important to ensure maximum bead recovery. **Do not centrifuge the vial**; doing so will cause the beads to pellet.
4. Dilute coupled beads to 1x by pipetting the required volume into the 15 ml tube. **Vortex**.

Each well of the assay requires 5 μ l of the 10x stock adjusted to a final volume of 50 μ l in assay buffer.

5. Protect the beads from light with aluminum foil. Equilibrate to room temperature prior to use.

Note: To minimize volume loss, use a 200–300 μ l capacity pipet to remove beads from the 10x stock tube. If necessary, perform the volume transfer in two steps. Do not use a 1,000 μ l capacity pipet and/or wide bore pipet tip.

Preparing 1x coupled beads from 10x stock (includes 20% excess volume)

Table 6. Premixed panel or one singleplex assay.

# of Wells	10x Beads, μ l	Assay Buffer, μ l	Total Volume, μ l
96	575	5,175	5,750
48	288	2,587	2,875

Table 7. Mixing singleplex assays.

# of Wells	Singleplex #1	Singleplex #2	Assay Buffer, μ l	Total Volume, μ l
	10x Beads, μ l	10x Beads, μ l		
96	575	575	4,600	5,750
48	288	288	2,300	2,876

8. Run Assay

Considerations

- Bring all assay components and samples to room temperature before use

- Use calibrated pipets and pipet carefully, avoiding bubbles
- Pay close attention to vortexing, shaking, and incubation instructions. Deviation from the protocol may result in low assay signal and assay variability
- Assay incubations are carried out on a shaker at **850 ± 50 rpm** at room temperature (RT). Cover the plate with sealing tape and **protect from light** with aluminum foil

Table 8. Summary of wash options and protocols. After each assay step, select the appropriate Bio-Plex Pro™ wash station program or perform the appropriate manual wash step as summarized below.

Assay Step	Bio-Plex Pro Wash Station	Handheld Magnet or Vacuum Manifold
	Magnetic Program	Manual Wash Steps
Add beads to plate	MAG x2	2 x 100 µl
Sample incubation		
Detection Ab incubation	MAG x3	3 x 100 µl
SA-PE incubation		

Add Coupled Beads, Samples, Standards, Blank, and Controls

1. Cover unused wells of the assay plate with sealing tape.
2. **Vortex** the diluted (1x) beads for **30 sec** at medium speed. Pour into a reagent reservoir and transfer **50 µl** to each well of the assay plate.

Tip: A multichannel pipet is highly recommended for ease of use and efficiency.

3. **Wash the plate two times** with **100 µl** Bio-Plex® wash buffer per well, using the wash method of choice.
4. **Vortex** the diluted samples, standards, blank, and controls at medium speed for **5 sec**. Transfer **50 µl** of each to the appropriate well of the assay plate, changing the pipet tip after every volume transfer.
5. **Cover** plate with a new sheet of sealing tape and protect from light with aluminum foil. **Incubate** on shaker at **850 ± 50 rpm** for **1 hr** at RT.
Note: Be consistent with this incubation time and shaker setting for optimal assay performance and reproducibility.

Prepare and Add Detection Antibodies

1. While the samples are incubating use Tables 9 and 10 or the Calculation Worksheet on pages 35–36 to calculate the volume of detection antibodies and Bio-Plex detection antibody diluent HB needed to prepare a 1x stock. Detection antibodies should be prepared **10 min before use**.
2. Add the required volume of Bio-Plex detection antibody diluent HB to a 5 ml polypropylene tube.
3. **Vortex** the 10x stock of detection antibodies for **15–20 sec** at medium speed, then perform a **30 sec** spin to collect the entire volume at the bottom of the tube.
4. Dilute detection antibodies to 1x by pipetting the required volume into the 5 ml tube. **Vortex**.

Each well of the assay requires 2.5 μ l of the 10x stock adjusted to a final volume of 25 μ l in detection antibody diluent HB.

Preparing 1x detection antibodies from 10x stock (includes 25% excess volume)

Table 9. Premixed panel or one singleplex assay.

# of Wells	10x Detection Antibodies, μ l	Detection Antibody Diluent, μ l	Total Volume, μ l
96	300	2,700	3,000
48	150	1,350	1,500

Table 10. Mixing singleplex assays.

# of Wells	Singleplex #1	Singleplex #2	Detection	Total Volume, μ l
	10x Detection Antibodies, μ l	10x Detection Antibodies, μ l	Antibody Diluent, μ l	
96	300	300	2,400	3,000
48	150	150	1,200	1,500

5. After incubating the beads, samples, standards, blank, and controls, slowly remove and discard the sealing tape.
6. **Wash the plate three times with 100 μ l wash buffer per well.**

- Vortex** the diluted (1x) detection antibodies at medium speed for **5 sec**. Transfer into a reagent reservoir and dispense **25 µl** to each well of the assay plate using a multichannel pipet.
- Cover** plate with a new sheet of sealing tape and protect from light with aluminum foil. **Incubate** on shaker at **850 ± 50 rpm** for **30 min** at RT.

Prepare and Add Streptavidin-PE (SA-PE)

- While detection antibodies are incubating, use Table 11 or the Calculation Worksheet on pages 35–36 to calculate the volume of SA-PE and assay buffer needed to prepare a 1x stock. SA-PE should be prepared **10 min before use**.
- Add the required volume of assay buffer to a 15 ml polypropylene tube.
- Vortex** the 100x stock of SA-PE for **5 sec** at medium speed. Perform a **30 sec** spin to collect the entire volume at the bottom of the tube.
- Dilute SA-PE to 1x by pipetting the required volume into the 15 ml tube. **Vortex** and protect from light until ready to use.

Each well of the assay requires 0.5 µl of the 100x stock adjusted to a final volume of 50 µl in assay buffer.

Table 11. Preparing 1x SA-PE from 100x stock (includes 25% excess volume).

# of Wells	100x SA-PE, µl	Assay Buffer, µl	Total Volume, µl
96	60	5,940	6,000
48	30	2,970	3,000

- After detection antibody incubation, slowly remove and discard the sealing tape.
- Wash the plate three times** with **100 µl** of wash buffer per well.
- Vortex** the diluted (1x) SA-PE at medium speed for **5 sec**. Pour into a reagent reservoir and transfer **50 µl** to each well using a multichannel pipet.

8. **Cover** plate with a new sheet of sealing tape and protect from light with aluminum foil. **Incubate** on shaker at **850 ± 50 rpm** for **10 min** at RT.
9. After the streptavidin-PE incubation step, slowly remove and discard the sealing tape.
10. **Wash the plate three times** with **100 µl** of wash buffer per well.
11. To resuspend beads for plate reading, add **125 µl** assay buffer to each well. Cover the plate with a new sheet of sealing tape. Shake at room temperature at **850 ± 50 rpm** for **30 sec**, slowly remove and discard the sealing tape. Ensure that the plate cover has been removed before placing the plate on the reader.

Table 12. Read the plate using the appropriate instrument settings.

Instrument	RP1 (PMT)	DD Gates	Bead Events
Bio-Plex 100, 200*	Low	5,000 (low), 25,000 (high)	50
Bio-Plex 3D*	Standard	Select MagPlex beads	50
Bio-Plex® MAGPIX™	N/A, use default instrument settings		

* Or similar Luminex-based system.

9. Read Plate

Bio-Plex Manager™ software is recommended for all Bio-Plex Pro™ assay data acquisition and analysis. Instructions for Luminex xPONENT software are also included. For instructions using other xMAP system software packages, contact Bio-Rad Technical Support or your regional Bio-Rad field applications specialist.

Prepare Protocol in Bio-Plex Manager Software Version 6.0 and Higher

The protocol should be prepared in advance so that the plate is read as soon as the experiment is complete.

A protocol file specifies the analytes in the assay, the plate wells to be read, sample information, the values of standards and controls, and instrument settings.

Bio-Plex Manager software versions 6.0 and higher contain protocols for most Bio-Plex® assays. Choose from available protocols or create a new protocol. To create a new protocol, select **File**, then **New** from the main menu. Locate and follow the steps under **Protocol Settings**.






1. Click **Describe Protocol** and enter information about the assay (optional).
2. Click **Select Analytes** and create a new panel. Visually confirm the selected analytes and proceed to step 3.
 - a. Click **Add Panel**  in the **Select Analytes** toolbar. Enter a new panel name. Select **Bio-Plex Pro Assay Magnetic** from the assay dropdown list. If using Bio-Plex Manager version 5.0 or lower, select MagPlex from the assay dropdown list.
 - b. Click **Add**. Enter the bead region number and name for the first analyte. Click **Add Continue** to repeat for each analyte in the assay. Refer to the bead regions in parentheses () listed on the peel-off label provided with the standards.
For reference, bead regions are shown in Table 13.
 - c. Click **Add** when the last analyte has been added and click **OK** to save the new panel.
 - d. Highlight analytes from the **Available** list (left) and move to the **Selected** list (right) using the **Add** button. To move all analytes at once, simply click **Add All**.
 - e. If some of the analytes need to be removed from the **Selected** list, highlight them and select **Remove**. If desired, it is possible to rename the panel by clicking **Rename Panel** and entering a new panel name.

Table 13. Bead regions for the human inflammation panel.

Target	Bead Region	Target	Bead Region	Target	Bead Region
APRIL/TNFSF13	42	IL-11	39	LIGHT/TNFSF14	51
BAFF/TNFSF13B	37	IL-12 (p40)	28	MMP-1	43
sCD30/TNFRSF8	53	IL-12 (p70)	75	MMP-2	26
sCD163	46	IL-19	29	MMP-3	45
Chitinase 3-like 1	72	IL-20	30	Osteocalcin	65
gp130/sIL-6R β	14	IL-22	18	Osteopontin (OPN)	77
IFN- α 2	20	IL-26	22	Pentraxin-3	48
IFN- β	44	IL-27 (p28)	13	sTNF-R1	73
IFN- γ	21	IL-28A/IFN- λ 2	66	sTNF-R2	67
IL-2	38	IL-29/IFN- λ 1	33	TSLP	52
IL-6R α	19	IL-32	35	TWEAK/TNFSF12	62
IL-8	54	IL-34	15		
IL-10	56	IL-35	34		

Note: Do not use preset panels found in Bio-Plex Manager software version 5.0 or earlier, as the bead regions are not up to date.

3. Click **Format Plate** and format the plate according to the plate layout created in section 1 (Plan Plate Layout). To modify the plate layout, follow the steps below (see Figure 4).
 - a. Select the **Plate Formatting** tab.
 - b. Select the standards icon  and drag the cursor over all the wells that contain standards. Repeat this process for Blanks , Controls , and Samples . Note that Bio-Plex Manager automatically subtracts the blank MFI value from all other assay wells.
4. Click **Enter Standards Info** in the Protocol Settings bar.
 - a. Enter the highest concentration of each analyte in the top row (labeled S1) of the table. S1 concentration information is included with each vial of standards.

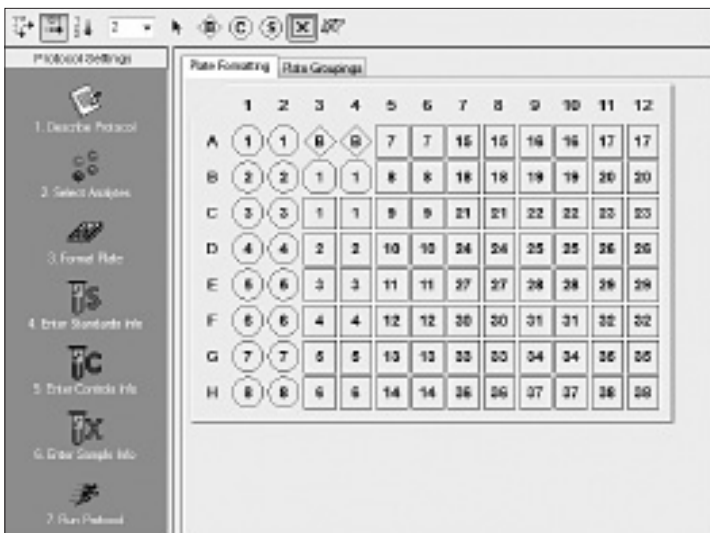




Fig. 4. Plate formatting.

- b. Enter a dilution factor of 3 and click **Calculate**. The concentrations for each standard point will be populated for all analytes in the table.
 - c. Optional: enter the lot number of the vial of standards into the **Standard Lot** box and click **Save**.
5. Click **Enter Controls Info**.
 - a. For user-specified controls, select an analyte from the dropdown menu, then enter a description and concentration. Repeat for each additional analyte in the assay.
 - b. **For the quality controls supplied with the premixed panel only**, format the appropriate wells as controls, enter descriptions but leave the concentrations blank. Alternatively, the quality controls can be formatted as samples with clear descriptions such as “quality control.” In any case, **the expected control ranges provided are not entered into Bio-Plex Manager software version 6.1 and earlier.**

6. Click **Enter Sample Info** and enter sample information and the appropriate dilution factor.
7. Click **Run Protocol** and confirm that the assay settings are correct.
 - a. Refer to Table 12 for the recommended RP1 (PMT) setting. Protocols using alternative PMT settings should be validated by the end user.
 - b. Confirm that data acquisition is set to **50 beads per region**. In Advanced Settings, confirm that the bead map is set to **100 region**, the sample size is set to **50 μ l**, and the doublet discriminator (DD) gates are set to **5,000 (Low)** and **25,000 (High)**. In Bio-Plex Manager software versions 4.0, 4.1, 4.1.1, and 5.0, check **Override Gates** and set the DD gate values as indicated. Select **Start**, name and save the .rbx file, and begin data acquisition. The Run Protocol pop-up screen will appear. Click **Eject/Retract** to eject the plate carrier.

Acquire Data

1. Shake the assay plate at **850 \pm 50 rpm** for **30 sec** and visually inspect the plate to ensure that the assay wells are filled with buffer. Slowly remove the sealing tape and any plate cover before placing the plate on the plate carrier.
2. Click **Run Protocol** and on the pop-up screen select **Load Plate** and click **OK** to start acquiring data.
3. Use the **Wash Between Plates**  command after every plate run to reduce the possibility of clogging the instrument.
4. If acquiring data from more than one plate, empty the waste bottle and refill the sheath bottle after each plate (if HTF are not present). Select **Wash Between Plates** and follow the instructions. Then repeat the Prepare Protocol and Acquire Data instructions.
5. When data acquisition is complete, select **Shut Down**  and follow the instructions.

Reacquire Data

It is possible to acquire data from a well or plate a second time using the **Rerun/Recovery** mode located below Start in the Run Protocol step. Any previous data will be overwritten.

1. Check the wells from which data will be reacquired.
2. Aspirate the buffer with the wash method of choice, but do not perform the wash step.
3. Add **100 µl** of assay buffer to each well. Cover the plate with a new sheet of sealing tape. Shake the plate at **850 ± 50 rpm** for **30 sec**. Slowly remove the sealing tape before placing the plate on the plate reader.
4. Repeat the **Acquire Data** steps to reacquire data. The data acquired should be similar to those acquired initially; however, the acquisition time will be extended because the wells have fewer beads.

Data Analysis

Controls

If the quality controls were run in the assay plate, open the results (.rbx) file, click on **Report Table**, and locate the control wells. Visually compare the observed concentrations of the control in the Report Table against the lot-specific control ranges shown in the product data sheet.

Note: Expected control ranges are provided for reference and should be used as general guidelines. Actual results may vary for some operators. If the controls do not fall within the expected ranges, please refer to the troubleshooting section for possible causes and solutions.

Removing Outliers

Outliers are identified as standard data points that do not meet accuracy or precision requirements and should be considered invalid when performing curve fitting. As such, they should be removed to generate a more realistic and accurate standard curve. This may result in an extended assay working range and allow quantitation of samples that might otherwise be considered out of range.

Removing Outliers

Outliers are identified as standard data points that do not meet accuracy or precision requirements and should be considered invalid when performing curve fitting. As such, they should be removed to generate a more realistic and accurate standard curve. This may result in an extended assay working range and allow quantitation of samples that might otherwise be considered out of range.

In Bio-Plex Manager software version 6.0 and higher, outliers can be automatically removed by selecting the **Optimize** button in the Standard Curve window. In Bio-Plex Manager software 5.0 and earlier versions, outliers also can be manually selected in the Report Table. Visit online Help to learn more about the standard curve optimizer feature and how outliers are determined.

Previous Versions of Bio-Plex Manager Software

For instructions on using previous versions of Bio-Plex Manager software, please contact Bio-Rad Technical Support.

Luminex xPONENT Software

Although guidelines are provided here, consult the xPONENT software manual for more details. Perform a system initialization with Luminex's calibration and performance verification kit, as directed by Luminex. Select **Batches** to set up the protocol and follow the information under **Settings**.

Note: The instrument settings described below apply to Luminex 100/200 and FLEXMAP 3D or Bio-Plex® 3D instruments. For the Bio-Plex® MAGPIX™ reader, use the default instrument settings.

1. Select **MagPlex** as the bead type for magnetic beads, which automatically sets the DD gates.
2. Volume = 50 µl.
3. Refer to Table 12 to select the appropriate PMT setting for your instrument.
4. Plate name: 96-well plate.

5. Analysis type: Quantitative, 5PL Curve Fit.
6. Number of standards: 8.

Select **Analytes** to set up the panel.

1. Enter **pg/ml** in the Units field.
2. Enter **50** in the Count field.
3. Select the bead region and enter the analyte name.
4. Click **Apply all** for Units and Count.

Select **Stds and Ctrls**.

1. Enter standard concentrations, lot number, dilution factor, and other information as applicable.

After the assay is complete, select **Results**, then select **Saved Batches**.

Troubleshooting Guide

This troubleshooting guide addresses problems that may be encountered with Bio-Plex Pro™ assays. If you experience any of the problems listed below, review the possible causes and solutions provided. Poor assay performance may also be due to the Bio-Plex® suspension array reader. To eliminate this possibility, use the validation kit to determine whether the array reader is functioning properly.

Possible Causes

High Inter-Assay CV

Standards and controls were not reconstituted consistently between assays

Reconstituted standards, controls, and diluted samples were not stored properly

Bottom of filter plate not dry

Possible Solutions

Incubate the reconstituted standards for 30 min on ice. Always be consistent with the incubation time and temperature.

Reconstituted standards and diluted samples should be prepared on ice as instructed. Prior to plating, the reconstituted standards and diluted samples should be equilibrated to room temperature.

Dry the bottom of the filter plate with absorbent paper towel (preferably lint-free) to prevent cross-well contamination.

Possible Causes

High Intra-Assay CV

Improper pipetting technique

Reagents and assay components not equilibrated to room temperature prior to pipetting

Contamination with wash buffer during wash steps

Slow pipetting of samples and reagents across the plate

Bio-Plex wash station: insufficient washing due to clogged pins

Possible Solutions

Pipet carefully when adding standards, controls, samples, detection antibodies, and streptavidin-PE, especially when using a multichannel pipet. Use a calibrated pipet. Change pipet tip after every volume transfer.

All reagents and assay components should be equilibrated to room temperature prior to pipetting.

During the wash steps, be careful not to splash wash buffer from one well to another. Be sure that the wells are filtered completely and that no residual volume remains. Ensure that the microplate shaker setting is not too high. Reduce the microplate shaker speed to minimize splashing.

Sample pipetting across the entire plate should take less than 4 min. Reagent pipetting across the entire plate should take less than 1 min.

Clean dispensing pins with the thicker of the two cleaning needles provided with washer. Perform regular rinses to minimize salt buildup.

Possible Causes

Low Bead Count

Miscalculation of bead dilution

Beads clumped in multiplex bead stock tube

Vacuum on for too long when aspirating buffer from wells

Assay plate not shaken enough during incubation steps and prior to reading

Reader is clogged

Incorrect needle height of the reader

Low Signal or Poor Sensitivity

Standards reconstituted incorrectly

Detection antibody or streptavidin-PE diluted incorrectly

Possible Solutions

Check your calculations and be careful to add the correct volumes.

Vortex for 30 sec at medium speed before aliquoting beads.

Do not apply vacuum to the filter plate for longer than 10 sec after the buffer is completely drained from each well.

Shake the plate at 850 ± 50 rpm during incubation steps and for 30 sec immediately before reading the plate.

Refer to the troubleshooting guide in the Bio-Plex System Hardware Instruction Manual (bulletin #10005042).

Adjust the needle height to coincide with the plate type provided in the kit.

Follow the standard preparation instructions carefully.

Check your calculations and be careful to add the correct volumes.

Possible Causes

High Background Signal

Incorrect buffer was used (for example, assay buffer used to dilute standards)

Accidentally spiked blank wells

Detection antibodies or streptavidin-PE incubated too long

Poor Recovery

Expired Bio-Plex reagents were used

Incorrect amounts of components were added

Microplate shaker set to an incorrect speed

High end saturation of the standard curve

Quality controls do not fall within expected ranges

Possible Solutions

Use standard diluent HB or diluent similar to final sample matrix to dilute standards.

Do not add any antigens to the blank wells.

Follow the procedure incubation time precisely.

Check that reagents have not expired. Use new or nonexpired components.

Check your calculations and be careful to add the correct volumes.

Check the microplate shaker speed and use the recommended setting. Setting the speed too high may cause splashing and contamination. Use the recommended plate shaker. Setting the speed too low may cause low assay signal and false plateau or high end saturation of standard curves.

Make sure that correct shaker speed and incubation times are used. Remove S1 from data analysis if needed.

Make sure that the controls are reconstituted at the same time as standards and in the same diluent (standard diluent HB). Incubate for precisely 30 min.

Possible Causes

Poor Recovery

Improper pipetting technique

Impact of Sample Matrix

Negative MFI values in samples or standards

Poor precision in serum and plasma sample measurements

Possible Solutions

Pipet carefully when adding standards, samples, detection antibodies, and streptavidin-PE, especially when using a multichannel pipet. Use a calibrated pipet. Change pipet tip after every volume transfer.

If samples contain little or no analyte, negative values observed may be due to statistical variation. If assay drift is suspected, retest the samples by positioning them next to the standards. If contamination of standards is suspected, check the standard replicate value and be careful when adding samples to the wells. Matrix effects could also produce negative sample values.

Bio-Plex Manager™ software automatically subtracts the Blank (B) MFI value from all other assay wells. While this has no impact on observed concentrations of samples within the assay working range, it may result in a negative MFI value if the Blank's MFI value is greater than either the standard or the sample value. If this is undesirable, then reformat the blank wells as Sample (X) or Control (C) in the protocol or results file.

Check if any interfering components, additives, or gel from separators were introduced into the samples. Avoid using hemolyzed and heavily lipemic samples. Remove visible particulate in samples by centrifugation. Avoid multiple freeze-thaw cycles of samples.

Plate Layout Template

12								
11								
10								
9								
8								
7								
6								
5								
4								
3								
2								
1								
	A	B	C	D	E	F	G	H

Calculation Worksheet

If using either a **premixed panel or one singleplex assay**, follow these directions.

Plan the plate layout and enter the number of wells to be used in the assay: _____
1

1. Determine the volume of 1x coupled beads needed.

- Each well requires 50 μl of coupled beads (1x): _____₁ x 50 μl = _____₂ μl
- Include 20% excess to ensure enough volume: _____₂ μl x 0.20 = _____₃ μl
- Total volume of 1x coupled beads: _____₂ μl + _____₃ μl = _____₄ μl
- Volume of **10x coupled beads** required: _____₄ μl /10 = _____₅ μl
- Volume of **assay buffer** required: _____₄ μl - _____₅ μl = _____₆ μl

2. Determine the volume of 1x detection antibody needed.

- Each well requires 25 μl detection antibodies (1x): _____₁ x 25 μl = _____₇ μl
- Include 25% excess to ensure enough volume: _____₇ μl x 0.25 = _____₈ μl
- Total volume of 1x detection antibodies: _____₇ μl + _____₈ μl = _____₉ μl
- Volume of **10x detection antibodies** required: _____₉ μl /10 = _____₁₀ μl
- Volume of **detection antibody diluent** required: _____₉ μl - _____₁₀ μl = _____₁₁ μl

3. Determine the volume of 1x streptavidin-PE needed.

- Each well requires 50 μl streptavidin-PE (1x): _____₁ x 50 μl = _____₁₂ μl
- Include 25% excess to ensure enough volume: _____₁₂ μl x 0.25 = _____₁₃ μl
- Total volume of 1x streptavidin-PE: _____₁₂ μl + _____₁₃ μl = _____₁₄ μl
- Volume of **100x streptavidin-PE** required: _____₁₄ μl /100 = _____₁₅ μl
- Volume of **assay buffer** required: _____₁₄ μl - _____₁₅ μl = _____₁₆ μl

If **mixing singleplex assays**, follow these directions.

Enter the number of wells to be used in the assay: _____
1

1. Determine the volume of 1x coupled beads needed.

- a. Each well requires 50 μl coupled beads (1x): _____ x 50 μl = _____ μl
1 2
- b. Include 20% excess to ensure enough volume: _____ μl x 0.20 = _____ μl
2 3
- c. Total volume of 1x coupled beads: _____ μl + _____ μl = _____ μl
2 3 4
- d. Enter the number of singleplex sets (or analytes) that will be multiplexed: _____
5
- e. Volume of **10x coupled beads** required from **each stock tube**:
_____ $\mu\text{l}/10$ = _____ μl
4 6
- f. Total volume of combined bead stocks: _____ x _____ μl = _____ μl
5 6 7
- g. Volume of **assay buffer** required: _____ μl - _____ μl = _____ μl
4 7 8

2. Determine the volume of 1x detection antibody needed.

- a. Each well requires 25 μl detection antibodies (1x): _____ x 25 μl = _____ μl
1 9
- b. Include 25% excess to ensure enough volume: _____ μl x 0.25 = _____ μl
9 10
- c. Total volume of 1x detection antibodies: _____ μl + _____ μl = _____ μl
9 10 11
- d. Enter the number of singleplex sets (or analytes) that will be multiplexed: _____
5
- e. Volume of **10x detection antibodies** required from **each stock tube**:
_____ $\mu\text{l}/10$ = _____ μl
11 12
- f. Total volume of combined detection antibody stock: _____ μl x _____ = _____ μl
12 5 13
- g. Volume of **detection antibody diluent HB** required: _____ μl - _____ μl = _____ μl
11 13 14

3. Determine the volume of 1x streptavidin-PE needed.

- a. Each well requires 50 μl streptavidin-PE (1x): _____ x 50 μl = _____ μl
1 15
- b. Include 25% excess to ensure enough volume: _____ μl x 0.25 = _____ μl
15 16
- c. Total volume of 1x streptavidin-PE: _____ μl + _____ μl = _____ μl
15 16 17
- d. Volume of **100x streptavidin-PE** required: _____ $\mu\text{l}/100$ = _____ μl
17 18
- e. Volume of **assay buffer** required: _____ μl - _____ μl = _____ μl
17 18 19

Safety Considerations

Eye protection and gloves are recommended when using these products. Consult the MSDS for additional information. Bio-Plex Pro™ assays contain components of animal origin. This material should be handled as if capable of transmitting infectious agents. Use universal precautions. These components should be handled at Biosafety Level 2 containment as defined by the U.S. government publication, *Biosafety in Microbiological and Biomedical Laboratories* (Centers for Disease Control 1999).

Legal Notices

Acrodisc and Supor are trademarks of Pall Corporation. MagPlex, xMAP, xPONENT, FLEXMAP 3D, MAGPIX, and Luminex are trademarks of Luminex Corporation. Barnstead, Lab-Line, and Microtiter are trademarks of Thermo Fisher Scientific, Inc. Sonifier is a trademark of Branson Ultrasonics Corporation.

The Bio-Plex® suspension array system includes fluorescently labeled microspheres and instrumentation licensed to Bio-Rad Laboratories, Inc. by the Luminex Corporation.

Ordering Information

Detailed ordering information can be found at www.bio-rad.com/bio-plex.

Catalog #	Premixed Multiplex Assay Panel
171-AL001M	Bio-Plex Pro Human Inflammation Panel 1 , 37-plex
171-AL002M	Bio-Plex Pro Human Inflammation Panel 1 , 24-plex
171-AL003M	Bio-Plex Pro Human Treg Cytokine Panel , 12-plex
	Singleplex Set
Various	Bio-Plex Pro Human Inflammation Singleplex Sets , 1 x 96-well (requires reagent kit III and inflammation panel 1 37-plex standard to run an assay)
	Individual Components and Accessories
171-304090M	Bio-Plex Pro Reagent Kit III with Flat Bottom Plate , 1 x 96-well
171-DL0001	Bio-Plex Pro Human Inflammation Panel 1 , 37-plex standard, pkg of 1 vial
171-DL0050	Bio-Plex Pro Human Inflammation Panel 1 , 37-plex standard, pkg of 50 vials

Bio-Plex Express Assays (You Mix)

Fast and economical custom assay service using the Bio-Plex Assay Builder (www.bio-rad.com/bio-plex/assaybuilder) to select analytes and plate type of interest. Assays are supplied as individual sets of coupled beads and detection antibodies in the all-in-one kit format. **Quality controls are not included in Express kits.**

Bio-Plex® x-Plex™ Assays (We mix)

Premium custom assay service using the Bio-Plex Assay Builder (www.bio-rad.com/bio-plex/assaybuilder) to select analytes of interests. These are custom blended and QC tested multiplex all-in-one kits. Controls are not included in x-Plex kits.

Other Components and Accessories

Bio-Plex software, wash buffer, Bio-Plex Pro flat bottom plates, and streptavidin-PE are also available individually.

Go to www.bio-rad.com/bio-plex for additional information.

BIO-RAD

**Bio-Rad
Laboratories, Inc.**



*Life Science
Group*

Web site www.bio-rad.com **USA** 800 424 6723
Australia 61 2 9914 2800 **Austria** 01 877 89 01 **Belgium** 09 385 55 11
Brazil 55 11 3065 7550 **Canada** 905 364 3435 **China** 86 21 6169 8500
Czech Republic 420 241 430 532 **Denmark** 44 52 10 00
Finland 09 804 22 00 **France** 01 47 95 69 65 **Germany** 089 31 884 0
Greece 30 210 9532 220 **Hong Kong** 852 2789 3300
Hungary 36 1 459 6100 **India** 91 124 4029300 **Israel** 03 963 6050
Italy 39 02 216091 **Japan** 81 3 6361 7000 **Korea** 82 2 3473 4460
Mexico 52 555 488 7670 **The Netherlands** 0318 540666
New Zealand 64 9 415 2280 **Norway** 23 38 41 30
Poland 48 22 331 99 99 **Portugal** 351 21 472 7700
Russia 7 495 721 14 04 **Singapore** 65 6415 3188
South Africa 27 861 246 723 **Spain** 34 91 590 5200
Sweden 08 555 12700 **Switzerland** 026674 55 05
Taiwan 886 2 2578 7189 **Thailand** 1800 88 22 88
United Kingdom 020 8328 2000