

ProLine™ Universal Calibration Beads

Catalog #	Description
145-1086	ProLine Universal Calibration Beads, 3 x 5 ml bottles

For research purposes only.

Intended Use

ProLine Universal Calibration Beads are optimized to verify the alignment and determine the drop delay on the 488, 488/561, and 488/640 nm system configurations of the S3™ and S3e™ Cell Sorters. With this ready-to-use solution, simply add ten drops into a 5 ml tube to start the quality control (QC) procedure. In less than 7 minutes, a pass/fail report will be generated for tracking purposes.

Contents

3 x 5 ml bottles.

Concentration

1 x 10⁶ beads/ml.

Bead Size

6 µm.

Storage Buffer Composition

Deionized water with 0.02% sodium azide and 0.01% NP-40.

Storage

Store at 2–8°C.

Important: Do not freeze. Protect from light.

Bead Lot Specifications

Go to bio-rad.com/prolineuniversal for the specifications for each bead lot and to download the associated bead lot file.

Directions for Use

Important: Do not dilute beads.

Note: If ProSort™ Software is not open, double click the **ProSort icon**, log in, and select **Start-Up** in the Setup and Maintenance toolbar.

Preparation of Beads

1. Vortex the 5 ml bottle containing the ProLine Beads vigorously.
2. Using the bottle dropper, release ten drops of solution (approximately 0.5 ml) into a 5 ml tube.

Quality Control Procedure

1. Place the 5 ml tube containing the ProLine Beads on the loading stage.
2. Move the loading stage to the run position.
3. Click **Run QC** in the Setup and Maintenance toolbar (Figure 1).

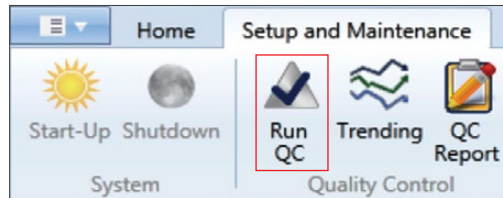


Fig. 1. Setup and Maintenance toolbar with Run QC selected.

4. Select your Bead Lot in the Quality Control Process window and click the **checkmark** (Figure 2). The software will perform both event-based alignment and drop delay setting.

Note: If your bead lot is not available in the dropdown menu, please see the New Bead Lot File section.

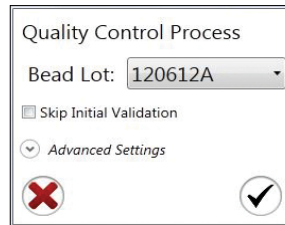


Fig. 2. Quality Control Process window with example bead lot file in the dropdown menu.

5. After the drop delay setting is completed, click the **checkmark** in the Quality Control Process status window (Figure 3).



Fig. 3. Quality Control Process status window with checkmark selected.

6. The Daily QC Report will appear with a passed/failed QC Status (Figure 4).

Passed QC Status: The S3 or S3e Cell Sorter is ready to use. Close the Daily QC Report and start your run.

Failed QC Status: Rerun the quality control procedure up to two more times. Contact your local technical support team at bio-rad.com if a failure continues.

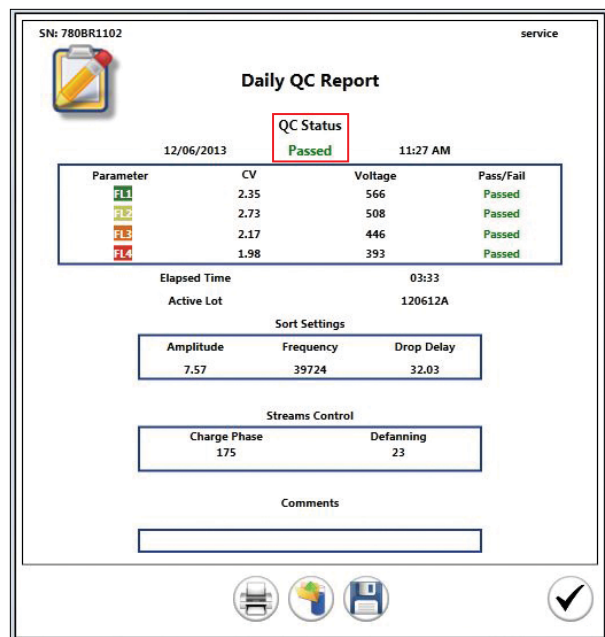


Fig. 4. Daily QC Report with passing QC Status.

Caution: This reagent is for research use only.

New Bead Lot File

Each lot of ProLine Universal Calibration Beads has an associated bead lot file. To upload a new bead lot file into ProSort Software follow the steps below.

To download a new bead lot file:

1. Go to bio-rad.com/prolineuniversal for instructions.
2. In the Description tab, double click the new bead lot file.
3. Save the file to the S3 or S3e Cell Sorter desktop or on a thumb drive.

To upload a new bead lot file:

1. Open ProSort Software and log in as an administrator user.
2. Select **Administrator** > **Edit QC Criteria** (Figure 5).
3. Click the **Bead Lot** add (+) button (Figure 6).
4. Select your bead lot file and click the **Save** button.
The new bead lot file is now saved and stored for future use in ProSort Software.

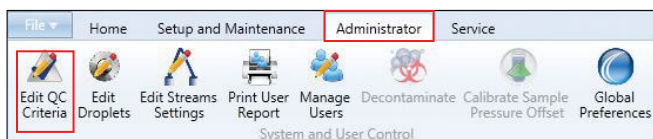


Fig. 5. ProSort Software window with Administrator > Edit QC Criteria selected.

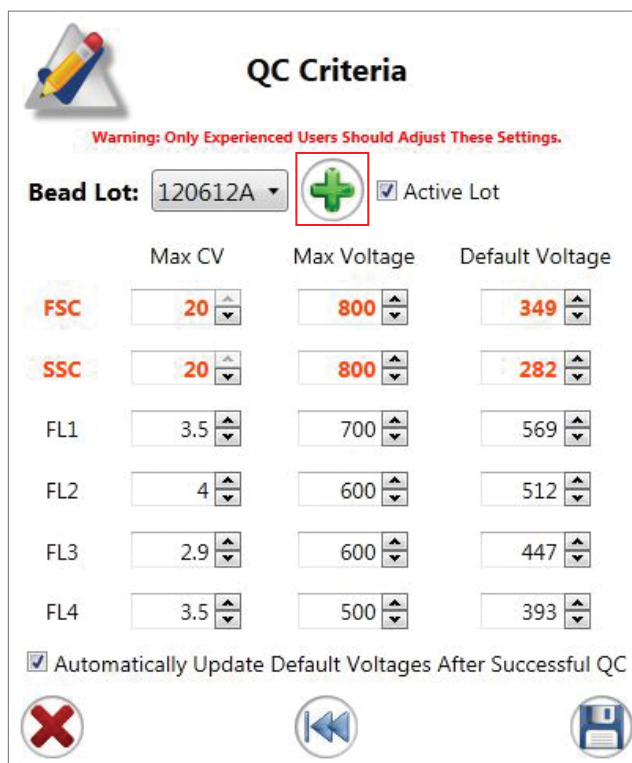


Fig. 6. QC Criteria window with Bead Lot add (+) button selected.

Visit bio-rad.com/web/calibrationbeads for more information.