

## AMPLIFICATION

# Checking Firmware and Software Updates for the C1000 Touch™ Thermal Cycler and the CFX96 Touch™, CFX96 Touch Deep Well, and CFX384 Touch™ Real-Time PCR Detection Systems Quick Guide

Bio-Rad Laboratories, Inc. periodically offers updates for C1000 Touch thermal cycler, CFX96 Touch system, CFX96 Touch deep well system, and CFX384 Touch system firmware and for CFX Manager™ software. We strongly recommend that you regularly check your system and install any available updates. Installing updates ensures optimal performance from your instrument and provides additional features as they become available.

To confirm that your system is up to date, check the version of firmware installed on the C1000 Touch thermal cycler and the CFX96 Touch, CFX96 Touch deep well, or CFX384 Touch system, and the version of CFX Manager software installed on your computer. Compare these to the latest versions posted on the Bio-Rad website at [www.bio-rad.com/pcr\\_updates](http://www.bio-rad.com/pcr_updates).

### Checking the Firmware Version Installed on the C1000 Touch Thermal Cycler and the CFX96 Touch, CFX96 Touch Deep Well, or CFX384 Touch System

1. Turn on the instrument; wait until the system is fully booted and shows the main menu screen.
2. On the main menu screen of the C1000 Touch thermal cycler, touch the **Tools** button (Figure 1).
3. Touch **About** in the User menu (Figure 2).
4. Compare the installed firmware version displayed on the instrument (Figure 3) with the most current firmware version available on the website.

**Note:** The 8051 and DSP firmware are used only for real-time PCR. If you are using a C1000 Touch thermal cycler for standard PCR, these firmware versions will not be visible.

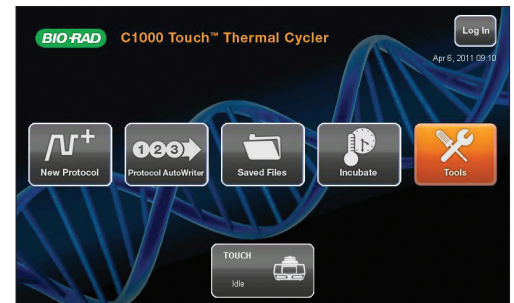


Fig. 1. Main menu of the C1000 Touch thermal cycler.

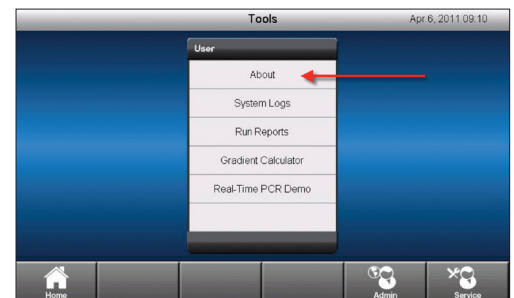


Fig. 2. User menu.

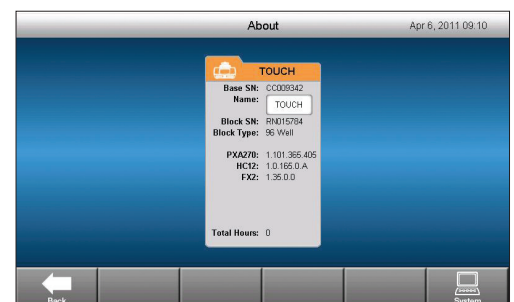


Fig. 3. Installed firmware versions displayed on the C1000 Touch thermal cycler.

5. If the version installed on your instrument does not match the current version listed on the website, download and install the update.

### Checking the CFX Manager Software Version Installed on Your Computer

1. Launch CFX Manager software.
2. Select **Help > About** from the main software window (Figure 4).
3. The About Bio-Rad CFX Manager window displays the installed software version (Figure 5).
4. If the version installed on your computer does not match the current version listed on the website, download and install the update.

**Note:** CFX Manager software version 3.1 can automatically check for updates if the computer is connected to the Internet. For more information, refer to the CFX96 Touch, CFX96 Touch deep well, CFX Connect™, and CFX384 Touch real-time PCR detection systems instruction manual.

Bio-Rad's real-time thermal cyclers are covered by one or more of the following U.S. patents or their foreign counterparts owned by Eppendorf AG: U.S. Patent Numbers 6,767,512 and 7,074,367.

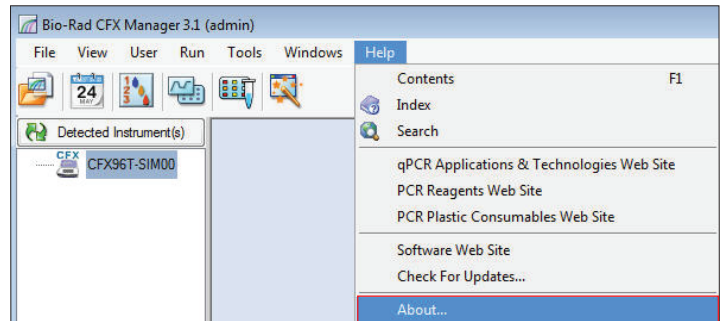


Fig. 4. Navigating in the main window of CFX Manager software.

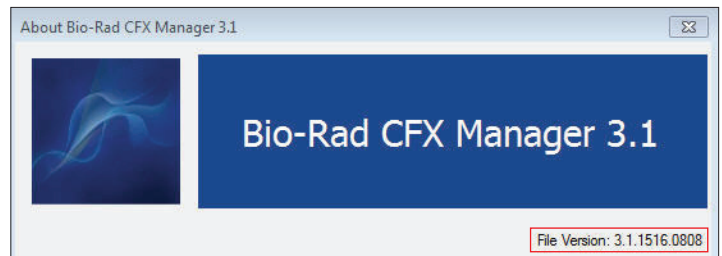


Fig. 5. Installed software version displayed in the About Bio-Rad CFX Manager 3.1 window.



**Bio-Rad  
Laboratories, Inc.**

Life Science  
Group

**Web site** [www.bio-rad.com](http://www.bio-rad.com) **USA** 800 424 6723 **Australia** 61 2 9914 2800 **Austria** 01 877 89 01 **Belgium** 09 385 55 11 **Brazil** 55 11 5044 5699  
**Canada** 905 364 3435 **China** 86 21 6169 8500 **Czech Republic** 420 241 430 532 **Denmark** 44 52 10 00 **Finland** 09 804 22 00  
**France** 01 47 95 69 65 **Germany** 089 31 884 0 **Greece** 30 210 9532 220 **Hong Kong** 852 2789 3300 **Hungary** 36 1 459 6100 **India** 91 124 4029300  
**Israel** 03 963 6050 **Italy** 39 02 216091 **Japan** 03 6361 7000 **Korea** 82 2 3473 4460 **Mexico** 52 555 488 7670 **The Netherlands** 0318 540666  
**New Zealand** 64 9 415 2280 **Norway** 23 38 41 30 **Poland** 48 22 331 99 99 **Portugal** 351 21 472 7700 **Russia** 7 495 721 14 04  
**Singapore** 65 6415 3188 **South Africa** 27 861 246 723 **Spain** 34 91 590 5200 **Sweden** 08 555 12700 **Switzerland** 026 674 55 05  
**Taiwan** 886 2 2578 7189 **Thailand** 800 88 22 88 **United Kingdom** 020 8328 2000