

AMPLIFICATION

Checking Firmware and Software Updates for the CFX Connect™ Real-Time PCR Detection System — A Quick Guide

Bio-Rad Laboratories, Inc. periodically offers updates for the CFX Connect real-time PCR detection system and CFX Manager™ software. We strongly recommend that you regularly check your system and install any available updates. Installing updates ensures optimal performance from your instrument and provides additional features as they become available.

To confirm that your system is up to date, check the version of firmware and software installed for the CFX Connect system on your computer. Compare these to the latest versions posted on the Bio-Rad website at www.bio-rad.com/pcr_updates.

To check the installed firmware and software versions, launch CFX Manager software, then follow the steps below.

Checking the Firmware Installed

1. In the Detected Instrument(s) pane window, right click on your CFX Connect instrument and select **Properties** (Figure 1).
2. The Instrument Properties window displays the installed firmware version (Figure 2).

Checking the CFX Manager Software Version Installed

1. Select **Help > About** from the main software window (Figure 3).
2. The About Bio-Rad CFX Manager window displays the installed software version (Figure 4).

If the firmware and software versions installed on your computer do not match the current versions listed on the website, download and install the updates.

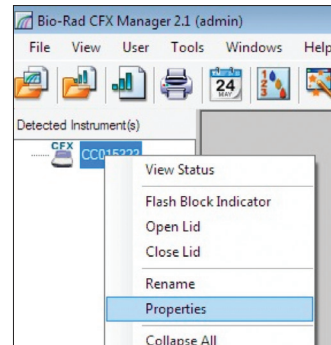


Fig. 1. Navigating in the Detected Instrument(s) pane window.

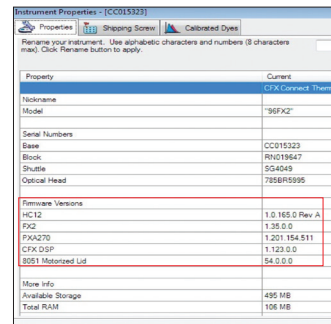


Fig. 2. Installed firmware version displayed in the Instrument Properties window.

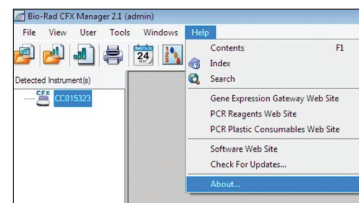


Fig. 3. Navigating in the main window of CFX Manager software.

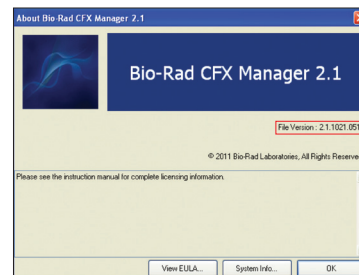


Fig. 4. Installed software version displayed in the About Bio-Rad CFX Manager 2.1 window.



Automatic Software and Instrument Updates

Software and instruments can be automatically updated using CFX Manager software. The software automatically checks for updates each time CFX Manager software is started and whenever a new instrument is connected to the computer while the software is running. An Updates window will appear when updates are available. To update your software and/or instrument:

1. In the Software and Instrument Updates window, click **Details** to view the new features in the update (Figure 5).
2. Select **CFX Manager Software** and/or **Instruments** (Figure 6).
3. Click **Update** (Figure 6).

When both software and instrument updates are selected, the software will update, restart, and then the instrument updates will begin. Instruments will need to be restarted once their updates have been completed.

For the latest updates to be downloaded, the computer running CFX Manager software must be connected to the Internet. If your computer is not connected to the Internet, confirm that your system is up to date by checking the version of firmware and software installed on your computer. Compare these to the latest versions posted on the Bio-Rad website at www.bio-rad.com/pcr_updates.

Bio-Rad's real-time thermal cyclers are licensed real-time thermal cyclers under Applera's U.S. Patent Number 6,814,934 B1 for use in research, human in vitro diagnostics, and all other fields except veterinary diagnostics.

Bio-Rad's real-time thermal cyclers are covered by one or more of the following U.S. patents or their foreign counterparts owned by Eppendorf AG: U.S. Patent Numbers 6,767,512 and 7,074,367.

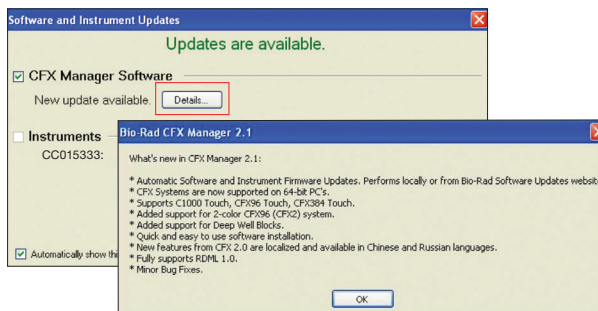


Fig. 5. Details window in Software and Instrument Updates.

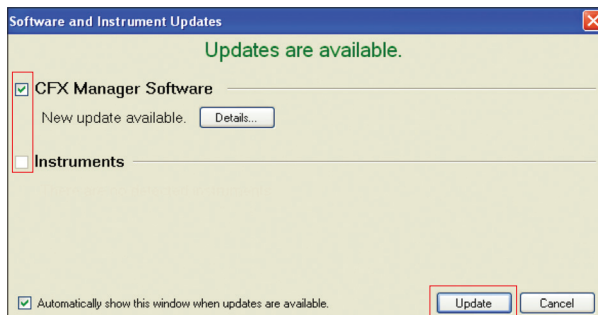


Fig. 6. Updating CFX Manager software in the Software and Instrument Updates window.



**Bio-Rad
Laboratories, Inc.**



Life Science
Group

Web site www.bio-rad.com **USA** 800 424 6723 **Australia** 61 2 9914 2800 **Austria** 01 877 89 01 **Belgium** 09 385 55 11 **Brazil** 55 31 3689 6600
Canada 905 364 3435 **China** 86 21 6169 8500 **Czech Republic** 420 241 430 532 **Denmark** 44 52 10 00 **Finland** 09 804 22 00
France 01 47 95 69 65 **Germany** 089 31 884 0 **Greece** 30 210 777 4396 **Hong Kong** 852 2789 3300 **Hungary** 36 1 459 6100 **India** 91 124 4029300
Israel 03 963 6050 **Italy** 39 02 216091 **Japan** 03 6361 7000 **Korea** 82 2 3473 4460 **Malaysia** 60 3 2117 5260 **Mexico** 52 555 488 7670
The Netherlands 0318 540666 **New Zealand** 64 9 415 2280 **Norway** 23 38 41 30 **Poland** 48 22 331 99 99 **Portugal** 351 21 472 7700
Russia 7 495 721 14 04 **Singapore** 65 6415 3170 **South Africa** 27 861 246 723 **Spain** 34 91 590 5200 **Sweden** 08 555 12700
Switzerland 061 717 95 55 **Taiwan** 886 2 2578 7189 **Thailand** 66 2 6518311 **United Kingdom** 020 8328 2000