



## IMAGING AND ANALYSIS SOFTWARE

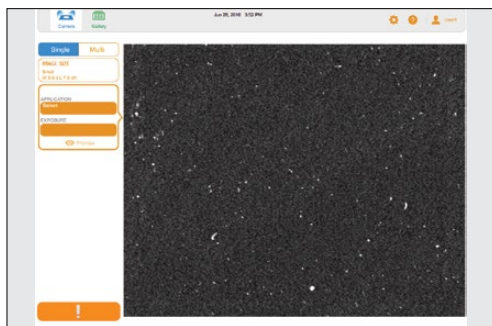
# Acquiring an Image with the ChemiDoc™ and ChemiDoc MP Imaging Systems

## Quick Guide

When the imaging system is turned on, Image Lab™ Touch Software starts.

### Log In

- 1 Tap anywhere on the touch screen and enter a user name in the New User box.
- 2 If you are prompted to choose whether you want to be an administrator, tap **No**.
- 3 Tap your user name. A Camera view of the imaging stage appears.



**Note:** In the following procedures, tap the tiles in the left pane to view and select image settings. When quick help screens appear, read and then close these screens.

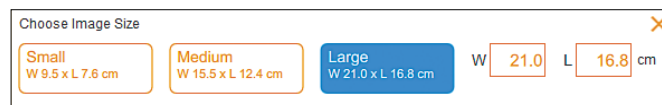
### Place a Sample in the Imager

- 1 Center a sample on the blot/UV/stain-free tray.
- 2 Place the tray on the imaging stage and close the transilluminator drawer.

### Choose an Image Size

**Tip:** For greatest sensitivity, specify an image size large enough for the sample to fill as much of the screen as possible.

- 1 In the left pane, tap **IMAGE SIZE** to display image size options.



- 2 Tap a standard size or enter the image width or length in centimeters. The software calculates the other dimension. The application name appears in the tile. Filter and illumination source settings appear under the application name.

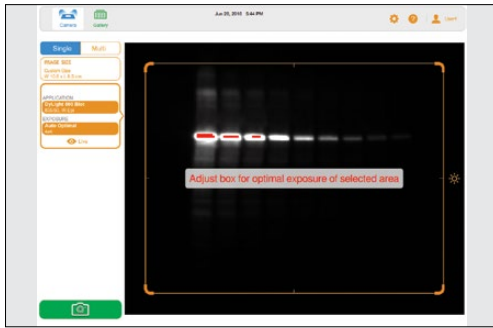
### Choose an Application

- 1 In the tile just below IMAGE SIZE, tap **Select** to display categories and applications.
- 2 In the screen that appears, tap an application category and then tap an application.

The application name appears in the tile. Filter and illumination source settings appear under the application name.

### Preview the Image

- 1 Near the bottom of the tile, tap **Preview**.  
The imager generates a low-resolution image of the sample and a selection rectangle you can adjust to surround an area of interest.



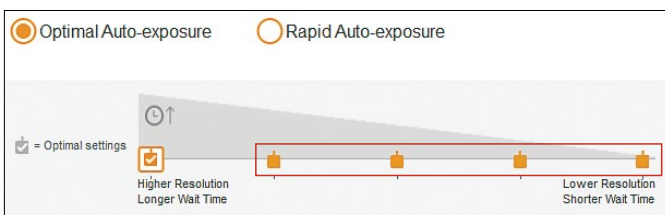
- 2 To resize the rectangle, drag a corner.
- 3 To move the rectangle, drag an edge.

## Choose an Auto-Exposure Type

- 1 In the channel tile, under EXPOSURE, tap **Auto Optimal**.  
The application category Auto is already selected in the dialog box that appears.
- 2 Tap **Optimal Auto-exposure** or **Rapid Auto-exposure**.  
**Optimal** — full dynamic range: exposure time is calculated to allow bright bands to be saturated, making faint bands visible.  
**Rapid** — exposure time is calculated more quickly without adjusting for faint or bright bands.

## Choose a Resolution Setting

**(Chemiluminescent and low-light applications only)** A checkmark indicates the binning setting that produces the optimal exposure without compromising resolution for the selected image size and application. Each orange box indicates a preset resolution.



- Tap the resolution setting you want. A white box surrounds the selected resolution setting.

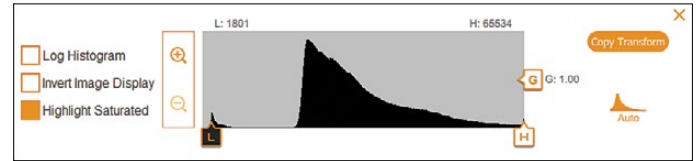
## Acquire the Image

- Tap the Camera icon at the bottom of the left pane.

## Change Image Appearance

You can adjust image transform settings to change the brightness and contrast of the image. The actual data are unaffected.

- 1 Tap **Transform** in the lower toolbar to display image transform settings.



- 2 Adjust image transform settings to your liking. The system automatically saves your changes with the image.

## Export the Image File

The system automatically saves and exports acquired image data as an .scn (single channel) or .mscn (multichannel) file, which can be opened and analyzed using Image Lab Software on a separate computer. You can also export image data in raw TIFF format (16 bit) for analysis using other software. Export image data in JPG or TIFF (8 bit) format for publication-quality images.

- 1 Tap **Send/Save**.
- 2 Under Export Options, tap a file type.
- 3 Above Export Options, tap a destination:
  - Save to Network — in the dialog box that appears, type the path name to a network folder
  - Save to USB Drive — saves the image data to the USB drive connected to the imager
- 4 Tap **OK** in the dialog box that appears.

## Find Out More

More information can be found in the following:

- ChemiDoc and ChemiDoc MP Imaging Systems with Image Lab Touch Software User Guide (#10000062126).
- Online help topics available on the touch screen. Tap the question mark in the top toolbar of any screen to view relevant help. Tap the **Help Topics** link at the bottom of any help screen to view a list of help topics
- The V3 Western Workflow™ Imaging Target, included in the imaging system accessory kit

**BIO-RAD**

**Bio-Rad  
Laboratories, Inc.**

Life Science  
Group

Web site [bio-rad.com](http://bio-rad.com) **USA** 1 800 424 6723 **Australia** 61 2 9914 2800 **Austria** 43 1 877 89 01 177 **Belgium** 32 (0)3 710 53 00 **Brazil** 55 11 3065 7550  
**Canada** 1 905 364 3435 **China** 86 21 6169 8500 **Czech Republic** 420 241 430 532 **Denmark** 45 44 52 10 00 **Finland** 358 09 804 22 00  
**France** 33 01 47 95 69 65 **Germany** 49 89 31 884 0 **Hong Kong** 852 2789 3300 **Hungary** 36 1 459 6100 **India** 91 124 4029300  
**Israel** 972 03 963 6050 **Italy** 39 02 216091 **Japan** 81 3 6361 7000 **Korea** 82 2 3473 4460 **Mexico** 52 555 488 7670 **The Netherlands** 31 (0)318 540 666  
**New Zealand** 64 9 415 2280 **Norway** 47 23 38 41 30 **Poland** 48 22 331 99 99 **Portugal** 351 21 472 7700 **Russia** 7 495 721 14 04  
**Singapore** 65 6415 3188 **South Africa** 27 (0) 861 246 723 **Spain** 34 91 590 5200 **Sweden** 46 08 555 12700 **Switzerland** 41 026674 55 05  
**Taiwan** 886 2 2578 7189 **Thailand** 66 662 651 8311 **United Arab Emirates** 971 4 8187300 **United Kingdom** 44 020 8328 2000

