



Multiplex Suspension Array System

Bio-Plex® Suspension Array System	256
Instruments, Software, and Tools	256
Bio-Plex Pro™ Cytokine, Chemokine, and Growth Factor Assays	261
Bio-Plex Signal Transduction Assays	262
Bio-Plex Pro Disease Research Assays	263
Bio-Plex Assay Tools	265
Ordering Information	267



Bio-Plex® Suspension Array System

The Bio-Plex suspension array platform is built on the most flexible multiplex technology available. Bio-Rad offers instruments to satisfy a variety of research needs and budgets for multiplex applications. These readers include the versatile Bio-Plex 200 system and the high-throughput capacity Bio-Plex 3D system.

Instruments, Software, and Tools

Bio-Rad offers a complete line of tools to help optimize multiplex assay-based research.

Bio-Plex System Selection Guide

	Bio-Plex 200	Bio-Plex 3D
		
Features	Versatile — accommodates multiple users Flexible — can read both magnetic and nonmagnetic assays User-friendly data management One acquisition and analysis software package	Optimal for labs with fewer budget restrictions Meets high-throughput needs Offers robotics interfacing
Read time (1 x 96-well plate)	~45 min	~20 min
Plate compatibilities	96-well	96- and 384-well
Number of measurable analytes/well	100	500
Assay compatibility (refer to table below)	All magnetic and nonmagnetic (polystyrene) bead-based assays	Most magnetic and all nonmagnetic (polystyrene) bead-based assays
Acquisition software	Bio-Plex Manager™	xPONENT
Analysis software	Bio-Plex Manager	Bio-Plex Manager
Robotics and LIMS/LIS compatible	—	Yes*
Onsite training	Included	Included
Investment	\$\$	\$\$\$
Footprint (W x D x H)	16.9 x 20.1 x 9.1" (43 x 51 x 23 cm)	23 x 25.7 x 18" (58.4 x 63.5 x 54.7 cm)

* Included in xPONENT automation module.

Bead and Assay Compatibility Table

Assay	Bio-Plex 200	Bio-Plex 3D
Bio-Plex Pro™ cytokine*	◆	◆
Bio-Plex Pro diabetes	◆	◆
Bio-Plex Pro TGF-β	◆	◆
NEW Bio-Plex Pro human cancer biomarker panel I	◆	◆
NEW Bio-Plex Pro Th17	◆	◆
Bio-Plex signal transduction (phosphoprotein/total target)	■	■
Bio-Plex Pro acute phase	▲	—
Bio-Plex® Precision Pro™ human cytokine	▲	—
Bio-Plex Pro isotyping	▲	—
Bio-Plex Pro angiogenesis	▲	—

* Except Bio-Plex Precision Pro human cytokine assay, catalog #171-A1001P.

◆, 6.5 μm magnetic bead; ■, 5.6 μm nonmagnetic bead; ▲, 8.0 μm magnetic bead.

Bio-Plex® 3D Suspension Array System

Order Info: Pg 267

The Bio-Plex 3D suspension array system is the next-generation multiplexing platform based on xMAP technology. Expanded multiplexing capability, faster time to results, and automation capability make it the platform of choice for high-throughput testing for nucleic acid and protein applications.

Features include:

- Rapid read times — twice as fast as with the Bio-Plex 200 system
- Measurement of up to 500 unique analytes in a single sample
- 96- and 384-well plate capability
- Laboratory information system (LIMS/LIS)-compatible software
- Automation-compatible tray design
- Robotics interfacing capabilities
- Compatibility with magnetic or nonmagnetic assays
- Bio-Plex Manager™ 6.1 software for data analysis
- Onsite training

For More Information

Web: www.bio-rad.com/bio-plex3D

Request or download bulletins: 5967 and 5980



Bio-Plex 3D Suspension Array System with Bio-Plex Manager 6.0 Software

System Throughput Capabilities

Test (50 µl well volume, 2,500 beads/well)	Read Time*	Tests/Hr
96-well (100-plex)	18 min	32,000
384-well (100-plex)	1 hr 15 min	30,700
96-well (500-plex)	45 min	64,000
384-well (500-plex)	2 hr 15 min	85,000

* Read times measured across four instruments. Actual results may vary.

Bio-Plex® 200 System

Order Info: Pg 267

The Bio-Plex 200 system integrates xMAP suspension array technology with a reliable instrument, dedicated software, and validation tools. The system includes the following components:

- **Array reader** — combines 2 lasers, fluidics, and real-time digital signal processing to distinguish up to 100 different color-coded bead sets, each representing a different assay
- **Microplate platform** — automates the reading of 96-well plates, yielding up to 9,600 data points in ~35 min
- **Optional high-throughput fluidics (HTF)** — delivers up to 20 L of sheath fluid (40 plates) without user intervention
- **Calibration and validation kits** — enable daily calibration of signal output and IQ/OQ, and monthly validation of primary performance parameters of the reader
- **Bio-Plex MCV plate IV** — customized for hands-free startup, shutdown, and performance testing



- **Bio-Plex Manager™ software** — controls the instrument, data acquisition, and analysis (standard edition and Security Edition)
- **PC and monitor** — includes PC, CD-RW, Windows XP operating system, Microsoft Office Professional and Adobe Acrobat Reader software, and a flat-screen monitor

The Bio-Plex 200 system offers many time-saving features, including:

- Simplified startup, shutdown, control, and pre- and post-run maintenance routines
- Sophisticated analysis and instrument control software in an integrated software package
- Automated IQ/OQ

- Integrated system validation and calibration logs for a record of system performance
- Superior curve fitting, statistics reporting, and charting features
- Calibration capabilities for both broad range and low range standard dilutions

For More Information

Web: www.bio-rad.com/bio-plex200
Request or download bulletin: 2900

Bio-Plex Pro™ Wash Stations Order Info: Pg 267

The Bio-Plex Pro and Bio-Plex Pro II wash stations streamline multiplex assays by eliminating manual wash steps. Bio-Plex Pro wash stations help decrease variability and increase consistency in results between experiments and are specifically designed to perform Bio-Plex assay wash steps. Benefits include:

- Reliable and reproducible results
- Optimized on-board protocols
- Simple ELISA-like workflow
- Custom protocol option for developing other xMAP applications

The Bio-Plex Pro wash station incorporates a magnetic plate carrier for simple and reliable hands-free washing of 96-well plates.

The Bio-Plex Pro II wash station includes both a magnetic plate carrier and an interchangeable vacuum manifold, providing the added flexibility of washing magnetic or nonmagnetic bead-based assays.

Both stations include preset wash programs that have been optimized for Bio-Plex assays.

For More Information

Web: www.bio-rad.com/washstation



Bio-Plex Pro Wash Station Selection Guide

Assay (Bead) Type	Bio-Plex Pro Wash Station	Bio-Plex Pro II Wash Station
Bio-Plex® assays (polystyrene)	—	•
xMAP microspheres (polystyrene)	—	•
Bio-Plex Pro assays (magnetic)	•	•
Bio-Plex® Precision Pro™ assays (magnetic)	•	•
MagPlex microspheres (magnetic)	•	•

Bio-Plex Manager™ 6.1 Software, Standard Edition Order Info: Pg 267

Bio-Plex Manager 6.1 software is a comprehensive, all-in-one software package that provides advanced data analysis for multiplex assays.

Simple Operation

- Ability to self train — just follow the steps outlined on the screen
- Familiar Windows interface — no new terms or menus to learn

Save Time

- Simplified input — values for standards are easy to enter; automatic addition of new lots reduces set-up time
- Automated data processing — proprietary algorithm automatically sets the appropriate dynamic range and identifies data points outside this range
- Immediate recalculation of results efficiently updates data when settings are changed

Use Tools that Meet Your Unique Needs

- Superior sensitivity and dynamic range with onboard Brendan Scientific StatLIA 4PL and 5PL weighted curve-fitting models
- Data normalization using multiple internal controls (housekeeping genes) for gene expression applications
- Gene Manager analysis module for presence and absence analysis, pathogen detection, and genotyping applications

Analyze Data with Easy-to-Use Reports

- Automated export of standard curve graphs
- View of all wells or summary (average) of replicate samples
- Data organized by sample type, group, or well
- One-click navigation between analytes
- Flexible data presentation

Data Export, Cross-Platform Capabilities, and System Compatibility

- Import and analyze data from xPONENT and other third-party software
- Use any commercial or custom xMAP assay built on any Luminex microsphere
- Copy and paste data into popular word processing and presentation software applications

- Export to text, XML, and Excel in column or 96-well format
- Analyze data in LIMS and other third-party software by customizing export options
- Request Bio-Plex Manager 4.1.1 software for installation on Luminex systems with IS software alongside xPONENT software

Bio-Plex Manager Software Licenses

License	Capabilities and Uses
Instrument control	Full-system, data acquisition and analysis; included with all Bio-Plex 200 systems
Desktop	Single-user license for protocol setup and data analysis; does not control the array reader
Network	Multiuser (5, 10, 25, or 50) licenses for data access from a server; does not control the array reader
Security edition	Enables U.S. FDA 21 CFR Part 11 compliance

System Requirements

CPU	Pentium 4 or higher, PC only
Operating system	Windows XP Professional, Windows 7

For More Information

Web: www.bio-rad.com/bio-plexsoftware

Request or download bulletin: 5613

Bio-Plex Manager™ 6.1 Software Conversions and Upgrades

Order Info: Pg 268

Bio-Plex Manager 6.1 software conversions and upgrades include all the functionality of the standard versions with added instrument controls for data acquisition, calibration, and validation.

- Preprogrammed routine processes automate startup, calibration, validation, run, and shutdown
- Unattended routine operations — program pre- and post-run maintenance operations to save time

Bio-Plex Manager™ 6.1 Software, Security Edition

Order Info: Pg 268

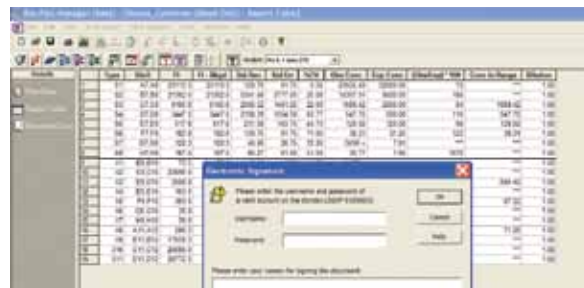
Includes all standard edition software features and has built-in security features for U.S. FDA 21 CFR Part 11 compliance:

- Includes Bio-Plex® Gene Manager data analysis utility
- Control user log-in, with different user levels for access to different functions
- Audit trails
- Secure protocol and data files
- Secure databases for reporting of calibration, validation, and instrument operations

For More Information

Web: www.bio-rad.com/bio-plexsoftware

Request or download bulletin: 5613



Electronic signature window allows you to bring documents into a secure environment.

New Bio-Plex Data Pro™ Software

Order Info: Pg 268

Bio-Plex Data Pro software simplifies the management and analysis of large data sets generated from multiplex assays. The software allows up to 10 data file imports per project; optional Bio-Plex Data Pro Plus software is available for projects with more than 10 data file imports.

Organize Data

- Merge, import, sort, and filter data from multiple data sets

Automate Calculations

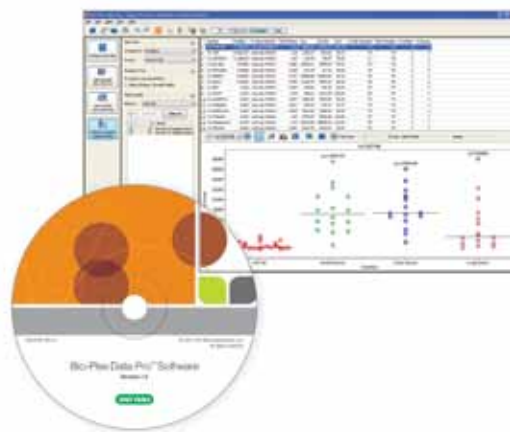
- Perform common calculations and statistical tests quickly and confidently

Visualize Results

- Clearly present data with customized graphs and tables

For More Information and to Download a Free Trial

Web: www.bio-rad.com/datapro



System Performance Validation and Calibration Tools

Order Info: Pg 268

System performance validation and calibration tools ensure reliable and consistent results. Validation and calibration protocols are automated and records are stored in a secure database. Procedures are performed using a maintenance, calibration, and validation (MCV) plate that holds the required solutions.

Bio-Plex® Validation Kit 4.0 and Bio-Plex MCV Plate IV

The Bio-Plex validation kit 4.0 includes reagents for validating instrument parameters (optics, reporter, classify, and fluidics validation) using Bio-Plex Manager™ software and the Bio-Plex MCV plate IV.

For More Information

Web: www.bio-rad.com/bio-plexvalidation

Request or download bulletins: 2879; instruction manual — 4110007

Bio-Plex Calibration Kit

The Bio-Plex calibration kit standardizes the signal output from day to day and from instrument to instrument. Bio-Plex Manager software calibrates at both high and low PMT settings in one simple procedure. Single calibration allows the use of whichever setting is appropriate for your experiment, without recalibration.

For More Information

Request or download bulletin: 2879



Bio-Plex Reservoir



Bio-Plex MCV Plate IV



Bio-Plex Validation Kit 4.0



Bio-Plex Calibration Kit

Bio-Plex Pro™ Cytokine, Chemokine, and Growth Factor Assays

Human, Mouse, and Rat Assays

Order Info: Pg 269

Bio-Plex Pro™ cytokine, chemokine, and growth factor assays are magnetic bead-based multiplex immunoassays offering accurate and reproducible measurements of multiple analytes simultaneously. These assays have been developed to provide reliable performance with the flexibility required to meet all of your research needs. Assays are available for human, mouse, or rat studies.

- **Magnetic beads** — automated plate washing and improved reproducibility across experiments
- **Increased productivity** — measure multiple analytes simultaneously, get results in about 3 hr

- **Flexible ordering options** — order either premixed all-in-one kits, singleplex sets, or customize your assay with the Bio-Plex® assay builder (www.bio-rad.com/assaybuilder)
- **Cross-platform compatibility** — can be used with all xMAP life science instruments supplied by any Luminex partner
- **Convenient pathway panels** — Th17, Th1/Th2, and TGF-β available

For More Information

Web: www.bio-rad.com/CCGFassays

Request or download bulletins: 5828, 6054, 6100, and 6110

Available Assays

Analytes	Human	Mouse	Rat
β-NGF	•	—	—
CD40L	—	NEW	—
CTACK	•	—	—
Eotaxin	•	•	—
EPO	—	—	NEW
FGF-basic	•	•	—
G-CSF	•	•	NEW
GM-CSF	•	•	NEW
GRO/KC	—	•	NEW
GRO-α	•	—	—
HGF	•	—	—
ICAM-1	•	NEW	—
IFN-α2	•	—	—
IFN-γ	•	•	NEW
IL-1α	•	•	NEW
IL-1β	•	•	NEW
IL-1ra	•	—	—
IL-2	•	•	NEW
IL-2Rα	•	—	—
IL-3	•	•	—
IL-4	•	•	NEW
IL-5	•	•	NEW
IL-6	•	•	NEW
IL-7	•	—	NEW
IL-8	•	—	—
IL-9	•	•	—
IL-10	•	•	NEW
IL-12 p40	•	•	NEW
IL-12 p70	•	•	NEW
IL-13	•	•	NEW
IL-15	•	•	—
IL-16	•	—	—
IL-17A	•	•	NEW
IL-17e (IL-25)	—	•	—
IL-17F	—	NEW	—
IL-18	•	•	NEW
IL-21	—	NEW	—
IL-22	—	NEW	—

Available Assays (cont.)

Analytes	Human	Mouse	Rat
IL-23p19	—	NEW	—
IL-27p28	—	NEW	—
IL-31	—	NEW	—
IL-33	—	NEW	—
IP-10	•	—	—
KC	—	•	NEW
LIF	•	•	—
MCP-1	•	•	•
MCP-3	•	—	—
M-CSF	•	•	NEW
MIF	•	—	—
MIG	•	•	—
MIP-1α	•	•	NEW
MIP-1β	•	•	—
MIP-2	—	•	NEW
MIP-3α	—	NEW	NEW
PDGF-BB	•	•	—
RANTES	•	•	NEW
SCF	•	—	—
SCGF-β	•	—	—
SDF-1α	•	—	—
TGF-β1	NEW	NEW	NEW
TGF-β2	NEW	NEW	NEW
TGF-β3	NEW	NEW	NEW
TNF-α	•	•	NEW
TNF-β	•	—	—
TRAIL	•	—	—
VCAM-1	•	—	—
VEGF	•	•	NEW

Bio-Plex® Signal Transduction Assays

Bio-Plex® Phosphoprotein and Total Target Assays

Order Info: Pg 272

Bio-Rad's selection of multiplexable phosphoprotein and total target assays includes 36 phosphoprotein and 14 total target assays. Bio-Plex phosphoprotein and total target assays (xMAP technology) are bead-based multiplexable assays that directly detect phosphorylated and total proteins in lysates derived from cell culture or tissue samples. These easy-to-use assays feature highly specific antibodies developed by Cell Signaling Technology, Inc. (CST).

Bio-Plex phosphoprotein and total target assays — includes coupled beads, detection antibodies, and lysates to test for specific proteins of interest in lysate samples.

Bio-Plex cell lysis kit — includes cell lysis buffer, cell wash buffer, factor 1, and factor 2; essential for optimal lysis of cell culture or tissue samples.

Bio-Plex phosphoprotein detection reagent kit — includes assay buffer, wash buffer, antibody diluent, resuspension buffer, streptavidin-PE, 96-well filter plate, sealing tape, and instructions required to prepare assays and acquire data.

Flexible ordering options — order either singleplex sets or customize your assay with the Bio-Plex assay builder (www.bio-rad.com/assaybuilder).

For More Information

Web: www.bio-rad.com/phosphoprotein

Request or download bulletins: 5405 and 5483

Available Nonmagnetic Assays

Assays	Phosphoprotein	Total
Akt Signaling		
Akt (Ser ⁴⁷³)	•	•
GSK-3α/β (Ser ²¹ /Ser ⁹)	•	—
Cell Cycle/Checkpoint Control		
p53 (Ser ¹⁵)	•	•
p53 (Ser ³⁷)	•	•
p53 (Ser ⁴⁶)	•	•
Chromatin Regulation/Acetylation		
Histone H3 (Ser ¹⁰)	•	—
Immunology/Inflammation		
IκB-α (Ser ³² /Ser ³⁶)	•	•
NF-κB p65 (Ser ⁵³⁶)	•	—
STAT2 (Tyr ⁶⁸⁹)	•	—
STAT3 (Ser ⁷²⁷)	•	—
STAT3 (Tyr ⁷⁰⁵)	•	—
STAT6 (Tyr ⁶⁴¹)	•	—
Tyk2 (Tyr ¹⁰⁵⁴ /Tyr ¹⁰⁵⁵)	•	—
Glucose/Energy Metabolism		
IGF-IR (Tyr ¹¹³¹)	•	—
IR-β (Tyr ¹¹⁴⁶)	•	—
IRS-1 (Ser ⁶³⁶ /Ser ⁶³⁹)	•	—
MAP Kinase Signaling		
ATF-2 (Thr ⁷¹)	•	•
c-Jun (Ser ⁶³)	•	•
ERK1 (Thr ²⁰² /Tyr ²⁰⁴)	•	—
ERK2 (Thr ¹⁸⁵ /Tyr ¹⁸⁷)	•	•
ERK1/2 (Thr ²⁰² /Tyr ²⁰⁴ , Thr ¹⁸⁵ /Tyr ¹⁸⁷)	•	•
HSP27 (Ser ⁷⁶)	•	•
JNK (Thr ¹⁸³ /Tyr ¹⁸⁵)	•	•
MEK1 (Ser ²¹⁷ /Ser ²²¹)	•	•
p38 MAPK (Thr ¹⁸⁰ /Tyr ¹⁸²)	•	•
p90RSK (Thr ³⁵⁹ /Ser ³⁶³)	•	•
Neuroscience		
CREB (Ser ¹³³)	•	•
TrkA (Tyr ⁴⁹⁰)	•	—
Translational Control		
p70 S6 kinase (Thr ⁴²¹ /Ser ⁴²⁴)	•	—
S6 ribosomal protein (Ser ²³⁵ /Ser ²³⁶)	•	—
Tyrosine Kinases		
Bcr-Abl (Tyr ²⁴⁵)	•	•
c-Abl (Tyr ²⁴⁵)	•	—
c-Abl (Tyr ⁴¹²)	•	—
EGFR (Tyr)	•	—
PDGF receptor-β (Tyr ⁷⁵¹)	•	—
Src (Tyr ⁴¹⁶)	•	—

Bio-Plex Pro™ Disease Research Assays

Bio-Plex Pro disease research assays are multiplex immunoassays designed on magnetic microspheres for the detection of multiple biomarkers involved in diabetes, cancer, angiogenesis, acute phase, immune response, and inflammation. The magnetic microspheres are classified into xMAP regions and work seamlessly with your Bio-Plex® system.

Benefits of Bio-Plex Pro assays include:

- Excellent sensitivity when using either an automated washing system or a standard vacuum manifold
- Automated washing to eliminate manual filtration steps, providing increased throughput and reproducibility

New Bio-Plex Pro™ Human Cancer Biomarker Panel 1

Order Info: Pg 273

Bio-Plex Pro human cancer biomarker panel 1 is a unique blend of magnetic bead-based assays designed to meet the needs of preclinical and clinical researchers. The multiplex format enables robust and reproducible measurement of 16 soluble proteins involved in disease processes such as angiogenesis, metastasis, cell proliferation, cell adhesion/migration, apoptosis, and inflammation. The assays incorporate several new features to enhance both quality and ease of use:

- **Magnetic beads** — simplified plate processing and improved reproducibility
- **Flexible ordering options** — available are the 16-plex premixed all-in-one kit, singleplex sets, or customized assays using the Bio-Plex® assay builder (www.bio-rad.com/assaybuilder)
- **Optimized protocols** — for high precision and broad assay working ranges
- **Assay quick guide** — to get started right away
- **Dual-level quality controls** — included with premixed kits
- **Robustness** — tested in serum, plasma, and other biological fluids
- **Convenience** — all-in-one kit format
- **Cross-platform compatibility** — can be used with all xMAP life science instruments supplied by any Luminex partner



Available Bio-Plex Pro Human Cancer Biomarker Assays

FGF-basic	PDGF-AB/BB	sHER2/neu
Follistatin	PECAM-1	sIL-6R α
G-CSF	Prolactin	sTIE-2
HGF	SCF	sVEGFR-1
Leptin	sEGFR	sVEGFR-2
Osteopontin		

For More Information

Web: www.bio-rad.com/bio-plexprocancer
Request or download bulletins: 6156 and 6159

Bio-Plex Pro™ Human Angiogenesis Assay Panel

Order Info: Pg 275

Angiogenesis research involves the measurement and monitoring of a host of protein targets that either induce or suppress the growth of blood vessels. The Bio-Plex Pro human angiogenesis assay panel allows the detection of 9 human angiogenesis biomarkers in just 3 hours with as little as 13 μ l of sample. The Bio-Plex Pro human angiogenesis assay panel is validated in serum, plasma, and culture supernatant and includes angiopoietin-2, follistatin, G-CSF, HGF, IL-8, leptin, PDGF-BB, PECAM-1, and VEGF.

- Compatible with the Bio-Plex 200 system and all Luminex 100- and 200-based readers (uses 25 bead map)

For More Information

Web: www.bio-rad.com/bio-plexproangiogenesis
Request or download bulletins: 5653

Bio-Plex Pro™ Diabetes Assays

Order Info: Pg 273

The Bio-Plex Pro diabetes assays are magnetic bead-based multiplex assays designed for enhanced assay sensitivity and assay working ranges. These assays detect human, mouse, and rat diabetes-related biomarkers, using as little as 12.5 µl of sample per well.

Benefits of these assays include:

- **Increased productivity** — measure up to 10 diabetes and obesity markers plus adiponectin and adipsin in only 3 hr
- **Expanded multiplexability** — mix diabetes assays with a host of compatible assays from our cytokine menu
- **Option to use a magnetic wash station** — simplify assay workflow and improve data consistency between experiments
- **Flexible ordering options** — order either premixed all-in-one kits, singleplex sets, or customize your assay with the Bio-Plex® assay builder (www.bio-rad.com/assaybuilder)
- **Robustness** — performance tested in serum and plasma matrices
- **Cross-platform compatibility** — can be used with all xMAP life science instruments supplied by any Luminex partner

For More Information

Web: www.bio-rad.com/bio-plexprodiabetes
Request or download bulletins: 5943, 5966, and 6119



Available Bio-Plex Pro Diabetes Assays

Human Diabetes	Mouse Diabetes	Rat Diabetes
Adiponectin	Adiponectin	Ghrelin
Adipsin	Ghrelin	GLP-1
C-peptide	GIP	Glucagon
Ghrelin	GLP-1	Leptin
GIP	Glucagon	PAI-1
GLP-1	Insulin	
Glucagon	Leptin	
Insulin	PAI-1	
Leptin	Resistin	
PAI-1		
Resistin		
Visfatin		

Bio-Plex Pro™ Human Acute Phase Assay Panel

Order Info: Pg 274

Inflammation in response to tissue injury, infection, sepsis, cardiovascular disease, and diabetes typically involves the production and release of multiple acute phase proteins from the liver. The Bio-Plex Pro human acute phase assay panels deliver accurate and reproducible measurement of 9 of the most commonly measured acute phase biomarkers in just 3 hours with as little as 13 µl of sample. Bio-Plex Pro human acute phase assays include:

- **Bio-Plex Pro human acute phase 5-plex assay panel** — includes ferritin, fibrinogen, procalcitonin, serum amyloid A, and tissue plasminogen activator
- **Bio-Plex Pro human acute phase 4-plex assay panel** — includes α-2-macroglobulin, CRP, haptoglobin, and serum amyloid P

Available Bio-Plex Pro™ Human Acute Phase Assays

α-2-macroglobulin	Procalcitonin
CRP	SAA
Ferritin	SAP
Fibrinogen	Tissue plasminogen activator
Haptoglobin	

- Validated in serum, plasma, and culture supernatant
- Compatible with the Bio-Plex 200 system and all Luminex 100- and 200-based readers (uses 25 bead map)

For optimal performance, the acute phase panel exists as separate 5-plex and 4-plex assays with distinct sample dilution requirements.

For More Information

Web: www.bio-rad.com/bio-plexproacutephase
Request or download bulletin: 5650

Bio-Plex Pro™ Human Isotyping Assays

Order Info: Pg 275

The Bio-Plex Pro human isotyping assay panel is validated in serum, plasma, and culture supernatant and allows detection of IgG₁, IgG₂, IgG₃, IgG₄, IgA, IgM, and IgE in only 10 µl of sample. A detailed profile of the immune response to infection, disease, vaccination, or drug therapy can be obtained in a single experiment.

- Compatible with the Bio-Plex 200 system and all Luminex 100- and 200-based readers (uses 25 bead map)

For More InformationWeb: www.bio-rad.com/bio-plexproisotyping

Request or download bulletin: 5521

Bio-Plex® Precision Pro™ Human Cytokine Assay Panel

Order Info: Pg 275

The Bio-Plex Precision Pro human cytokine assay panel provides accurate measurement of low levels of human cytokines with low intra- and inter-assay %CV. For the detection of IL-1β, IL-2, IL-4, IL-5, IL-6, IL-10, IL-12 p70, IL-13, IFN-γ, and TNF-α.

- Convenient all-in-one kit format that includes assay, reagent, and diluent components in a single box
- Includes standard diluents for both serum and plasma
- Contains controls for generating QC samples
- Robust performance in serum, plasma, and culture supernatant
- Compatible with the Bio-Plex 200 system and all Luminex 100- and 200-based readers (uses 25 bead map)

**For More Information**Web: www.bio-rad.com/bio-plexprecisionpro

Request or download bulletin: 5629

Bio-Plex® Assay Tools**Bio-Plex® Assay Standards**

Order Info: Pg 276

Bio-Plex assay standards are available in packages of 1 or 50 for all human cytokine (groups I and II); mouse cytokine (groups I, II, and III); rat cytokine; human, mouse, and rat diabetes; TGF-β; and human cancer biomarker assays. The standards are available in packages of 2 or 50 for all human acute phase, human angiogenesis, and human isotyping assays.

- Use as standards or controls in Bio-Plex and Bio-Plex Pro™ assays; convenient for longitudinal studies requiring a single lot of standards or controls
- Lot-specific standard values are provided

For More InformationWeb: www.bio-rad.com/bio-plexprodisease

Bio-Plex Pro™ Magnetic COOH Beads

Order Info: Pg 276

These are carboxylated beads that enable you to build your own magnetic assays for use with either magnetic- or vacuum-based separation protocols during assay preparation. The magnetic beads are available in 20 bead regions in 1 ml vials for immediate delivery (4 ml vials are available with a 30-day lead time). The Bio-Plex® amine coupling kit provides a complete set of reagents for coupling proteins to the beads. For nucleic acid coupling, refer to the instruction manual.

- Suitable for protein and nucleic acid multiplex assays
- Compatible with all xMAP readers and both Bio-Plex Pro and Bio-Plex Pro II wash stations

For More Information

Web: www.bio-rad.com/COOH



Bio-Plex® COOH Beads

Order Info: Pg 276

Develop your own Bio-Plex suspension array assays using these beads. The beads are internally labeled with two fluorescent dyes. Use the Bio-Plex amine coupling kit to attach nucleic acids, antibodies, or other proteins to polystyrene beads for multianalyte analysis of any sample in a 96-well format.

- **Flexible assays** — quickly add or remove analytes from your menu
- **Ready-to-use reagent kits** — optimized for Bio-Plex COOH beads
- **Complete solution** — one-stop source for all your assay needs

For More Information

Web: www.bio-rad.com/COOH



Bio-Plex® Amine Coupling Kit

Order Info: Pg 276

This kit was developed specifically for immobilizing antibodies or other proteins on Bio-Plex COOH beads.

- Sufficient reagents for 30 coupling reactions using 100 μ l of Bio-Plex COOH beads
- Each coupling reaction supports the analysis of 200 samples
- Tested on proteins from 6 to 150 kD
- For use with antibodies or other proteins

For More Information

Web: www.bio-rad.com/COOH



Bio-Plex Suspension Array System

Instruments, Software, and Tools

Catalog # Description

Bio-Plex 3D Suspension Array System		Pg 257
Bio-Plex3D	Bio-Plex 3D Suspension Array System , includes Bio-Plex 3D suspension array system, xPONENT 4.0 acquisition software, PC, calibration and verification reagents, Bio-Plex Manager 6.1 desktop license	
8920-18500001*	xPONENT CFR21 Part 11 Software Module , enables U.S. FDA 21 CFR Part 11 compliance	
8920-18700001*	xPONENT Automation Module , enables interfacing with robotics workstations	
171-022001*	Swivel Base , allows rotation of the instrument away from the robotics workstation for maintenance and sample loading	
8920-18600001*	xPONENT LIS Software Module , enables interfacing with LIMS/LIS databases	
8920-18200001*	xPONENT Extra Seat Licenses , 3 additional seats of xPONENT software	
* All additional accessories may be purchased through Bio-Rad Laboratories, Inc. at the time of system purchase. Post-system-purchase accessories must be purchased directly through Luminex Corporation.		
Bio-Plex 200 System		Pg 257
171-000201	Bio-Plex 200 System , 100–240 V, includes array reader, microplate platform, Bio-Plex Manager software with workstation license, PC, monitor, calibration kit, validation kit 4.0, MCV plate IV, Bio-Plex reservoir, 20 L sheath fluid, spare sample needle	
171-000205	Bio-Plex 200 System with HTF , same as 171-000201 with high-throughput fluidics (HTF)	
Bio-Plex Pro Wash Stations		Pg 258
300-34376	Bio-Plex Pro Wash Station , includes magnetic plate carrier, waste bottle, 2 buffer bottles	
300-34377	Bio-Plex Pro II Wash Station , includes magnetic plate carrier, vacuum manifold plate carrier, waste bottle, 2 buffer bottles	
Accessories		
171-025001	Bio-Plex Pro Flat-Bottom Plates , 40 x 96-well plates, for washing magnetic beads using the Bio-Plex Pro or Bio-Plex Pro II wash stations	
171-304500	Bio-Plex Wash Buffer , 1.5 L	
171-304502	Filter Plate , 1 x 96-well filter plate with clear plastic lid, plate holder tray, for washing nonmagnetic beads using the Bio-Plex Pro II wash station, optional vacuum manifold; sealing tape not included	
Bio-Plex Manager Software, Standard Edition*		Pg 258
171-STND01	Bio-Plex Manager 6.1 Software , includes 1-user desktop license, to analyze Bio-Plex data and generate protocols, does not operate the instrument	
171-STND05	Bio-Plex Manager 6.1 Software , 5-user desktop license, version 6.1, to analyze Bio-Plex data and generate protocols, does not operate the instrument	
171-STND10	Bio-Plex Manager 6.1 Software , 10-user desktop license, version 6.1, to analyze Bio-Plex data and generate protocols, does not operate the instrument 17,642.00	
171-STND25	Bio-Plex Manager 6.1 Software , 25-user desktop license, version 6.1, to analyze Bio-Plex data and generate protocols, does not operate the instrument 35,700.00	
171-STND50	Bio-Plex Manager 6.1 Software , 50-user desktop license, version 6.1, to analyze Bio-Plex data and generate protocols, does not operate the instrument 67,575.00	

Prices listed by catalog number on page 363.

* Contact Bio-Rad Technical Support to verify whether your current system is compatible with these software products.

Ordering Information

Multiplex Suspension Array System

www.bio-rad.com

Catalog #	Description	
Bio-Plex Manager Software Conversions and Upgrades		Pg 259
171-STND23	Bio-Plex Manager 6.1 Software for IS 2.3 System , system license, version 6.1, for converting Luminex IS and xPONENT systems	
171-SUPG30	Bio-Plex Manager 6.1 Software for 3.0 Instrument Control Software , system license for upgrading standard or security software version 3.0 to standard version 6.1 (Security Edition upgrade requires 171-SCRT00)	
171-SUPG40	Bio-Plex Manager 6.1 Software for 4.0 Instrument Control Software , system license for upgrading standard or security software version 4.0 to standard version 6.1 (Security Edition upgrade requires 171-SCRT00)	
171-SUPG41	Bio-Plex Manager 6.1 Software for 4.1 Instrument Control Software , system license for upgrading standard or security software version 4.1 to standard version 6.1 (Security Edition upgrade requires 171-SCRT00)	
171-SUPG50	Bio-Plex Manager 6.1 Software for 5.0 Instrument Control Software , system license for upgrading standard or security software version 5.0 to standard version 6.1 (Security Edition upgrade requires 171-SCRT00)	
Bio-Plex Manager Software, Security Edition*		Pg 259
171-SCRT00	Bio-Plex Manager 6.1 Instrument Control License , Security Edition, upgrades workstation with Bio-Plex Manager 6.1 software, allows compliance with U.S. FDA 21 CFR Part 11 regulations	
171-SCRT01	Bio-Plex Manager 6.1 Software , Security Edition, includes 1-user desktop license, allows compliance with U.S. FDA 21 CFR Part 11 regulations	
171-SCRT05	Bio-Plex Manager 6.1 Software , Security Edition, includes 5-user network license, allows compliance with U.S. FDA 21 CFR Part 11 regulations	
171-SCRT10	Bio-Plex Manager 6.1 Software , Security Edition, includes 10-user network license, allows compliance with U.S. FDA 21 CFR Part 11 regulations	
171-SCRT25	Bio-Plex Manager 6.1 Software , Security Edition, includes 25-user network license, allows compliance with U.S. FDA 21 CFR Part 11 regulations	
171-SCRT50	Bio-Plex Manager 6.1 Software , Security Edition, includes 50-user network license, allows compliance with U.S. FDA 21 CFR Part 11 regulations	
* Contact Bio-Rad Technical Support to verify whether your current system is compatible with these software products.		
Bio-Plex Data Pro Software		Pg 260
171-001510	Bio-Plex Data Pro with Bio-Plex Manager Software , includes 5 Bio-Plex Data Pro software licenses, 5-user desktop licenses for Bio-Plex Manager software	
171-001513	Bio-Plex Data Pro Software , includes 5 Bio-Plex Data Pro software licenses	
System Performance Validation and Calibration Tools		Pg 260
171-203001	Bio-Plex Validation Kit 4.0 , includes optics validation, reporter validation, classify validation, and fluidics validation bead sets for approximately 50 validation routines using Bio-Plex Manager 4.0, 4.1.1, 5.0, or 6.0 software (standard or Security Edition) and MCV plate IV	
171-203033	Bio-Plex MCV Plate IV , for use with Bio-Plex Manager 4.0, 4.1.1, 5.0, or 6.0 software (standard or Security Edition) and validation kit 4.0	
171-203060	Bio-Plex Calibration Kit , includes Cal1 and Cal2 calibration beads for approximately 50 daily calibration routines	
Bio-Plex Accessories and Replacement Parts		
171-203050	Bio-Plex Reservoir	
171-000055	Sheath Fluid , 1x, 20 L	
171-002001	Communication Cable , 5 ft DB9 cable, connects the microplate platform with the PC serial port	
171-002002	Communication Cable , 3 ft CAN BUS cable, connects the array reader with the HTF system	
171-002003	Communication Cable , 5 ft USB cable, connects the array reader with a PC USB port	
171-002010	Sheath Fluid Bottle , 1 L	
171-002012	Sheath Waste Bottle , 1 L	
171-002020	Sample Needle , 11.6 cm (4.6")	
171-002024	Alignment Guide , aligns the array reader on the microplate platform	
171-002026	Needle Adjustment Wrench	
171-002030	Protective Shield for Sample Needle	
171-002032	Air Intake Filter	
171-002033	Syringe Seal	
171-002034	Syringe Seal with Cylinder	
171-002038	Sheath Fluid Filter with Quick Connect Tubing , removes particles >5 µm in diameter	
171-002040	Sheath Cube Filter , 10 µm, removes particles >5 µm in diameter	
171-002056	Sheath Cube Filter , 10 µm, includes tubing, removes particles >10 µm in diameter	
171-002023	Needle Guide , allows sample needle access to microplates	

Prices listed by catalog number on page 363.

Bio-Plex Pro Cytokine, Chemokine, and Growth Factor Assays

Catalog # Description

Human, Mouse, and Rat Assays

Pg 261

Human Premixed All-in-One Kits*

M50-000007A	Bio-Plex Pro Human Cytokine 8-Plex Panel , 1 x 96-well, includes coupled magnetic beads, detection antibodies, standards, assay buffer, wash buffer, detection antibody diluent, streptavidin-PE, filter plate, flat-bottom plate, sealing tape, standard diluent, sample diluent for the detection of IL-2, IL-4, IL-6, IL-8, IL-10, GM-CSF, IFN- γ , TNF- α
M50-00031YV	Bio-Plex Pro Human Cytokine 17-Plex Panel , 1 x 96-well, includes coupled magnetic beads, detection antibodies, standards, assay buffer, wash buffer, detection antibody diluent, streptavidin-PE, filter plate, sealing tape, standard diluent, sample diluent for the detection of IL-1 β , IL-2, IL-4, IL-5, IL-6, IL-7, IL-8, IL-10, IL-12 (p70), IL-13, IL-17, G-CSF, GM-CSF, IFN- γ , MCP-1, MIP-1 β , TNF- α
MF0-005KMII	Bio-Plex Pro Human Cytokine 21-Plex Panel , 1 x 96-well, includes coupled magnetic beads, detection antibodies, standards, assay buffer, wash buffer, detection antibody diluent, streptavidin-PE, filter plate, flat-bottom plate, sealing tape, standard diluent, sample diluent for the detection of IL-1 α , IL-2R α , IL-3, IL-12 (p40), IL-16, IL-18, CTACK, GRO- α , HGF, IFN- α 2, LIF, MCP-3, M-CSF, MIF, MIG, β -NGF, SCF, SCGF- β , SDF-1 α , TNF- β , TRAIL
M50-0KCAF0Y	Bio-Plex Pro Human Cytokine 27-Plex Panel , 1 x 96-well, includes coupled magnetic beads, detection antibodies, standards, assay buffer, wash buffer, detection antibody diluent, streptavidin-PE, filter plate, sealing tape, standard diluent, sample diluent for the detection of IL-1 β , IL-1ra, IL-2, IL-4, IL-5, IL-6, IL-7, IL-8, IL-9, IL-10, IL-12 (p70), IL-13, IL-15, IL-17, basic FGF, eotaxin, G-CSF, GM-CSF, IFN- γ , IP-10, MCP-1, MIP-1 α , MIP-1 β , PDGF-BB, RANTES, TNF- α , VEGF
M50-00005L3	Bio-Plex Pro Human Cytokine Th1/Th2 Panel , 1 x 96-well, includes coupled magnetic beads, detection antibodies, standards, assay buffer, wash buffer, detection antibody diluent, streptavidin-PE, filter plate, flat-bottom plate, sealing tape, standard diluent, sample diluent for the detection of IL-2, IL-4, IL-5, IL-10, IL-12 (p70), IL-13, GM-CSF, IFN- γ , TNF- α

* Please contact your local Bio-Rad sales representative for pricing and availability of 10 x 96-well assay kits.

Catalog # Description Catalog # Description

Bio-Plex Pro Human Cytokine Singleplex Sets, Group I*, 1 x 96-Well

171-B5001M	IL-1β Set	171-B5015M	Eotaxin Set
171-B5002M	IL-1ra Set	171-B5016M	Basic FGF Set
171-B5003M	IL-2 Set	171-B5017M	G-CSF Set
171-B5004M	IL-4 Set	171-B5018M	GM-CSF Set
171-B5005M	IL-5 Set	171-B5019M	IFN-γ Set
171-B5006M	IL-6 Set	171-B5020M	IP-10 Set
171-B5007M	IL-7 Set	171-B5021M	MCP-1 Set
171-B5008M	IL-8 Set	171-B5022M	MIP-1α Set
171-B5009M	IL-9 Set	171-B5023M	MIP-1β Set
171-B5010M	IL-10 Set	171-B5024M	PDGF-BB Set
171-B5011M	IL-12 (p70) Set	171-B5025M	RANTES Set
171-B5012M	IL-13 Set	171-B5026M	TNF-α Set
171-B5013M	IL-15 Set	171-B5027M	VEGF Set
171-B5014M	IL-17A Set		

* Includes coupled magnetic beads and detection antibody. Requires reagent kit and standards.

Catalog # Description

Standards

171-D50001	Bio-Plex Pro Human Cytokine Standards Group I , 1 pack of 27 analytes
171-D10501	Bio-Plex Pro Human Cytokine Standards Group I , 50-pack of 27 analytes

Catalog # Description Catalog # Description

Bio-Plex Pro Human Cytokine Singleplex Sets, Group II*, 1 x 96-Well

171-B6001M	IL-1α Set	171-B6012M	MCP-3 Set
171-B6002M	IL-2Rα Set	171-B6013M	M-CSF Set
171-B6003M	IL-3 Set	171-B6014M	MIF Set
171-B6004M	IL-12 (p40) Set	171-B6015M	MIG Set
171-B6005M	IL-16 Set	171-B6016M	β-NGF Set
171-B6006M	CTACK Set	171-B6017M	SCF Set
171-B6007M	GRO-α Set	171-B6018M	SCGF-β Set
171-B6008M	HGF Set	171-B6019M	SDF-1α Set
171-B6009M	ICAM-1 Set	171-B6020M	TNF-β Set
171-B6010M	IFN-α2 Set	171-B6021M	TRAIL Set
171-B6011M	LIF Set	171-B6022M	VCAM-1 Set

* Includes coupled magnetic beads and detection antibody. Requires reagent kit and standards.

Prices listed by catalog number on page 363.

Ordering Information

Multiplex Suspension Array System

www.bio-rad.com

Catalog #	Description
Standards	
171-D60001	Bio-Plex Pro Human Cytokine Standards Group II , 1 pack of 23 analytes
171-D10502	Bio-Plex Pro Human Cytokine Standards Group II , 50-pack of 23 analytes

Catalog #	Description
Reagent Kits*	
171-304070	Bio-Plex Pro Reagent Kit , 1 x 96-well, includes assay buffer, wash buffer, detection antibody diluent, streptavidin-PE, filter plate, sealing tape, standard diluent, sample diluent
171-304070M	Bio-Plex Pro Reagent Kit with Flat-Bottom Plate , 1 x 96-well, includes flat-bottom plate, assay buffer, wash buffer, detection antibody diluent, streptavidin-PE, sealing tape, standard diluent, sample diluent, and instructions
171-304071	Bio-Plex Pro Reagent Kit , 10 x 96-well, includes assay buffer, wash buffer, detection antibody diluent, streptavidin-PE, filter plate, sealing tape, standard diluent, sample diluent

* Required only with singleplex sets.

Catalog #	Description
Mouse Premixed All-in-One Kits*	
M60-00007A	Bio-Plex Pro Mouse Cytokine 8-Plex Panel , 1 x 96-well, includes coupled magnetic beads, detection antibodies, standards, assay buffer, wash buffer, detection antibody diluent, streptavidin-PE, filter plate, flat-bottom plate, sealing tape, standard diluent, sample diluent for the detection of IL-1 β , IL-2, IL-4, IL-5, IL-10, GM-CSF, IFN- γ , TNF- α
MD0-00000EL	Bio-Plex Pro Mouse Cytokine 9-Plex Panel , 1 x 96-well, includes coupled magnetic beads, detection antibodies, standards, assay buffer, wash buffer, detection antibody diluent, streptavidin-PE, filter plate, sealing tape, standard diluent, sample diluent for the detection of IL-15, IL-18, basic FGF, LIF, M-CSF, MIG, MIP-2, PDGF-BB, VEGF
M60-009RDPD	Bio-Plex Pro Mouse Cytokine 23-Plex Panel , 1 x 96-well, includes coupled magnetic beads, detection antibodies, standards, assay buffer, wash buffer, detection antibody diluent, streptavidin-PE, filter plate, flat-bottom plate, sealing tape, standard diluent, sample diluent for the detection of IL-1 α , IL-1 β , IL-2, IL-3, IL-4, IL-5, IL-6, IL-9, IL-10, IL-12 (p40), IL-12 (p70), IL-13, IL-17, eotaxin, G-CSF, GM-CSF, IFN- γ , KC, MCP-1, MIP-1 α , MIP-1 β , RANTES, TNF- α
M60-00003J7	Bio-Plex Pro Mouse Cytokine Th1/Th2 Panel , 1 x 96-well, includes coupled magnetic beads, detection antibodies, standards, assay buffer, wash buffer, detection antibody diluent, streptavidin-PE, filter plate, flat-bottom plate, sealing tape, standard diluent, sample diluent for the detection of IL-2, IL-4, IL-5, IL-10, IL-12 (p70), GM-CSF, IFN- γ , TNF- α
171-FA001M	Bio-Plex Pro Mouse Cytokine Th17 Panel B 8-Plex Group III , 1 x 96-well, includes coupled magnetic beads, detection antibodies, standards, assay buffer, wash buffer, detection antibody diluent, streptavidin-PE, filter plate, sealing tape, standard diluent, sample diluent for the detection of CD40L, IL-17F, IL-21, IL-22, IL-23p19, IL-31, IL-33, MIP-3 α
M60-00007NY	Bio-Plex Pro Mouse Cytokine Th17 Panel A 6-Plex Group I , 1 x 96-well, includes coupled magnetic beads, detection antibodies, standard, assay buffer, wash buffer, detection antibody diluent, streptavidin-PE, filter plate, flat-bottom plate, sealing tape, standard diluent, sample diluent and instructions for the detection of IL-1 β , IL-6, IL-10, IL-17A, IFN- γ , TNF- α

* Please contact your local Bio-Rad sales representative for pricing and availability of 10 x 96-well assay kits.

Prices listed by catalog number on page 363.

Catalog #	Description	Catalog #	Description
Bio-Plex Pro Mouse Cytokine Singleplex Sets, Group I* , 1 x 96-Well			
171-G5001M	IL-1α Set	171-G5013M	IL-17A Set
171-G5002M	IL-1β Set	171-G5014M	Eotaxin Set
171-G5003M	IL-2 Set	171-G5015M	G-CSF Set
171-G5004M	IL-3 Set	171-G5016M	GM-CSF Set
171-G5005M	IL-4 Set	171-G5017M	IFN-γ Set
171-G5006M	IL-5 Set	171-G5018M	KC Set
171-G5007M	IL-6 Set	171-G5019M	MCP-1 Set
171-G5008M	IL-9 Set	171-G5020M	MIP-1α Set
171-G5009M	IL-10 Set	171-G5021M	MIP-1β Set
171-G5010M	IL-12 (p40) Set	171-G5022M	RANTES Set
171-G5011M	IL-12 (p70) Set	171-G5023M	TNF-α Set
171-G5012M	IL-13 Set		

* Includes coupled magnetic beads and detection antibody. Requires reagent kit and standards.

Catalog #	Description
Standards	
171-I50001	Bio-Plex Pro Mouse Cytokine Standards Group I , 1 pack of 23 analytes
171-I10501	Bio-Plex Pro Mouse Cytokine Standards Group I , 50-pack of 23 analytes

Catalog #	Description	Catalog #	Description
Bio-Plex Pro Mouse Cytokine Singleplex Sets, Group II* , 1 x 96-Well			
171-G6001M	IL-15 Set	171-G6005M	MIG Set
171-G6002M	Basic FGF Set	171-G6006M	MIP-2 Set
171-G6003M	LIF Set	171-G6007M	PDGF-BB Set
171-G6004M	M-CSF Set	171-G6008M	VEGF Set

* Includes coupled magnetic beads and detection antibody. Requires reagent kit and standards.

Catalog #	Description
-----------	-------------

Standards

- 171-I60001 **Bio-Plex Pro Mouse Cytokine Standards Group II**, 1 pack of 9 analytes
- 171-I10502 **Bio-Plex Pro Mouse Cytokine Standards Group II**, 50-pack of 9 analytes

Catalog #	Description	Catalog #	Description
-----------	-------------	-----------	-------------

Bio-Plex Pro Mouse Cytokine Singleplex Sets, Group III*, 1 x 96-Well

- | | | | |
|------------|---------------------|------------|-------------------------------------|
| 171-GA001M | CD40L Set | 171-GA007M | IL-27p28 Set |
| 171-GA002M | IL-17F Set | 171-GA008M | IL-31 Set |
| 171-GA003M | IL-21 Set | 171-GA009M | IL-33 Set |
| 171-GA004M | IL-22 Set | 171-GA010M | ICAM-1 Set** |
| 171-GA005M | IL-23p19 Set | 171-GA011M | MIP-3α Set |
| 171-GA006M | IL-25 Set | | |

* Includes coupled magnetic beads and detection antibody. Requires reagent kit and standards.

** Requires high dilution reagent kit.

Catalog #	Description
-----------	-------------

Standards

- 171-IA0001 **Bio-Plex Pro Mouse Cytokine Standards Group III**, 1 lot-matched vial, standard for detecting 11 analytes
- 171-IA0501 **Bio-Plex Pro Mouse Cytokine Standards Group III**, 50 lot-matched vials, standard for detecting 11 analytes

Reagent Kits*

- 171-304070 **Bio-Plex Pro Reagent Kit**, 1 x 96-well, includes assay buffer, wash buffer, detection antibody diluent, streptavidin-PE, filter plate, sealing tape, standard diluent, sample diluent
- 171-304070M **Bio-Plex Pro Reagent Kit with Flat-Bottom Plate**, 1 x 96-well, includes flat-bottom plate, assay buffer, wash buffer, detection antibody diluent, streptavidin-PE, sealing tape, standard diluent, sample diluent, and instructions
- 171-304071 **Bio-Plex Pro Reagent Kit**, 10 x 96-well, includes assay buffer, wash buffer, detection antibody diluent, streptavidin-PE, filter plate, sealing tape, standard diluent, sample diluent
- 171-304080M **Bio-Plex Pro High Dilution Reagent Kit**, 1 x 96-well, includes assay buffer, wash buffer, detection antibody diluent, streptavidin-PE, flat-bottom plate, filter plate, sealing tape, standard diluent, sample diluent

* Required only with singleplex sets.

Rat Premixed All-in-One Kits*

- 171-K1001M **Bio-Plex Pro Rat Cytokine 24-Plex Assay**, 1 x 96-well, includes coupled magnetic beads, detection antibodies, standards, assay buffer, wash buffer, detection antibody diluent, streptavidin-PE, filter plate, flat-bottom plate, sealing tape, standard diluent, sample diluent for the detection of EPO, G-CSF, GM-CSF, GRO/KC, IFN- γ , IL-1 α , IL-1 β , IL-2, IL-4, IL-5, IL-6, IL-7, IL-10, IL-12p70, IL-13, IL-17A, IL-18, MCP-1, M-CSF, MIP-1 α , MIP-3 α , RANTES, TNF- α , VEGF
- 171-K1002M **Bio-Plex Pro Rat Cytokine Th1/Th2 Panel**, 1 x 96-well, includes coupled magnetic beads, detection antibodies, standard, assay buffer, wash buffer, detection antibody diluent, streptavidin-PE, filter plate, flat-bottom plate, sealing tape, standard diluent, sample diluent and instructions for the detection of IL- α , IL-1 β , IL-2, IL-4, IL-5, IL-6, IL-10, IL-12p70, IL-13, GM-CSF, IFN- γ , TNF- α

* Please contact your local Bio-Rad sales representative for pricing and availability of 10 x 96-well assay kits.

Catalog #	Description	Catalog #	Description
-----------	-------------	-----------	-------------

Bio-Plex Pro Rat Cytokine Singleplex Sets*, 1 x 96-Well

- | | | | |
|------------|-------------------------------------|------------|-------------------------------------|
| 171-L1002M | EPO Set | 171-L1009M | IL-2 Set |
| 171-L1003M | G-CSF Set | 171-L1010M | IL-4 Set |
| 171-L1004M | GM-CSF Set | 171-L1011M | IL-5 Set |
| 171-L1005M | GRO/KC Set | 171-L1012M | IL-6 Set |
| 171-L1006M | IFN-γ Set | 171-L1013M | IL-7 Set |
| 171-L1007M | IL-1α Set | 171-L1014M | IL-10 Set |
| 171-L1008M | IL-1β Set | 171-L1015M | IL-12p40 Set |
| 171-L1016M | IL-12p70 Set | 171-L1022M | MIP-2 Set |
| 171-L1017M | IL-13 Set | 171-L1023M | MIP-3α Set |
| 171-L1018M | IL-17A Set | 171-L1024M | RANTES Set |
| 171-L1020M | M-CSF Set | 171-L1025M | TNF-α Set |
| 171-L1021M | MIP-1α Set | 171-L1026M | VEGF Set |

* Includes coupled magnetic beads and detection antibody. Requires reagent kit and standards.

Catalog #	Description
-----------	-------------

Standards

- 171-NZ0001 **Bio-Plex Pro Rat Cytokine Standards**, 1 pack of 30 analytes, compatible with rat cytokine and rat diabetes assays
- 171-NZ0501 **Bio-Plex Pro Rat Cytokine Standards**, 50-pack of 30 analytes, standard for detecting 30 rat targets. Compatible with rat cytokine and rat diabetes assays

Prices listed by catalog number on page 363.

Ordering Information

Multiplex Suspension Array System

www.bio-rad.com

Catalog #	Description
Reagent Kits*	
171-304070	Bio-Plex Pro Reagent Kit , 1 x 96-well, includes assay buffer, wash buffer, detection antibody diluent, streptavidin-PE, filter plate, sealing tape, standard diluent, sample diluent
171-304070M	Bio-Plex Pro Reagent Kit with Flat-Bottom Plate , 1 x 96-well, includes flat-bottom plate, assay buffer, wash buffer, detection antibody diluent, streptavidin-PE, sealing tape, standard diluent, sample diluent, and instructions
171-304071	Bio-Plex Pro Reagent Kit , 10 x 96-well, includes assay buffer, wash buffer, detection antibody diluent, streptavidin-PE, filter plate, sealing tape, standard diluent, sample diluent

* Required only with singleplex sets.

Bio-Plex TGF- β Premixed All-in-One Kits

171-W4001M	Bio-Plex Pro TGF-β 3-plex Assay , 1 x 96-well, includes coupled magnetic beads, detection antibodies, standards, assay buffer, wash buffer, detection antibody diluent, streptavidin-PE, filter plate, sealing tape, standard diluent, sample diluent for the detection of TGF- β 1, TGF- β 2, TGF- β 3
------------	---

Bio-Plex TGF- β Singleplex Sets*, 1 x 96-Well

171-W4001M	TGF-β 1 Set
171-V4002M	TGF-β 2 Set
171-V4003M	TGF-β 3 Set

* Includes coupled magnetic beads and detection antibody. Requires reagent kit and standards.

Standards

171-X40001	Bio-Plex Pro TGF-β Standard , 1 pack of 1 TGF- β standard for detecting TGF- β 1, TGF- β 2, and TGF- β 3 analytes
171-X40501	Bio-Plex Pro TGF-β Standard , 1 pack of 50 lot-matched vial, TGF- β standard for detecting TGF- β 1, TGF- β 2, and TGF- β 3 analytes

Bio-Plex Pro Assay Accessories

171-304500	Bio-Plex Wash Buffer , 1.5 L
171-025001**	Bio-Plex Pro Flat-Bottom Plates , 40 x 96-well plates
171-304502	Filter Plate , 1 x 96-well filter plate with clear plastic lid, plate holder-tray. Sealing tape not included.

** Required for washing Bio-Plex Pro assays or other magnetic bead-based assays using Bio-Plex Pro and Bio-Plex Pro II wash stations.

Note: x-Plex assay panels can be ordered with any combination of available assays. For more information, go to www.bio-rad.com/bio-plex/assaybuilder/.

Prices listed by catalog number on page 363.

Bio-Plex Signal Transduction Assays

Bio-Plex Phosphoprotein and Total Target Assays Pg 262

Catalog #	Phosphoprotein	Catalog #	Phosphoprotein
Bio-Plex Phosphoprotein Singleplex Assays*			
171-V21075	Akt (Ser⁴⁷³)	171-V24777	Histone H3 (Ser¹⁰)
171-V21620	ATF-2 (Thr⁷¹)	171-V24551	HSP27 (Ser⁷⁸)
171-V27145	Bcr-Abl (Tyr²⁴⁵)	171-V27343	IGF-IR (Tyr¹¹³¹)
171-V27545	c-Abl (Tyr²⁴⁵)	171-V20758	IκB-α (Ser³²/Ser³⁶)
171-V27745	c-Abl (Tyr⁴¹²)	171-V27943	IR-β (Tyr¹¹⁴⁶)
171-V24356	c-Jun (Ser⁶³)	171-V25576	IRS-1 (Ser⁶³⁶/Ser⁶³⁹)
171-V26119	CREB (Ser¹³³)	171-V28153	p53 (Ser⁶)
171-V23120**	EGFR (Tyr)	171-V24155	p70 S6 Kinase (Thr⁴²¹/Ser⁴²⁴)
171-V21938	ERK1 (Thr²⁰²/Tyr²⁰⁴)	171-V23535	p90RSK (Thr³⁵⁹/Ser³⁶³)
171-V20438	ERK2 (Thr¹⁸⁵/Tyr¹⁸⁷)	171-V25957	PDGF Receptor-β (Tyr⁷⁵¹)
171-V22238	ERK1/2 (Thr²⁰²/Tyr²⁰⁴, Thr¹⁸⁵/Tyr¹⁸⁷)	171-V25374**	S6 Ribosomal Protein (Ser²³⁵/Ser²³⁶)
171-V23318	GSK-3α/β (Ser²¹/Ser⁹)	171-V26741	Src (Tyr⁴¹⁹)
171-V21034	JNK (Thr¹⁸³/Tyr¹⁸⁵)	171-V23732	STAT2 (Tyr⁶⁸⁹)
171-V25340	MEK1 (Ser²¹⁷/Ser²²¹)	171-V26952	STAT3 (Ser⁷²⁷)
171-V24937	NF-κB p65 (Ser⁵³⁶)	171-V22552	STAT3 (Tyr⁷⁰⁵)
171-V21336	p38 MAPK (Thr¹⁸⁰/Tyr¹⁸²)	171-V25772	STAT6 (Tyr⁶⁴¹)
171-V25153	p53 (Ser¹⁵)	171-V23973	TrkA (Tyr⁴⁹⁰)
171-V28353	p53 (Ser³⁷)	171-V26533	Tyk2 (Tyr¹⁰⁵⁴/Tyr¹⁰⁵⁵)

* Requires cell lysis kit and phosphoprotein detection reagent kit.

** This assay cannot be multiplexed (EGFR (Tyr) and S6 ribosomal protein).

Catalog #	Total Target	Catalog #	Total Target
Bio-Plex Total Target Singleplex Assays*			
171-V31075	Akt	171-V34551	HSP27
171-V31620	ATF-2	171-V30758	IκB-α
171-V37145	Bcr-Abl	171-V31034	JNK
171-V34356	c-Jun	171-V35340	MEK1
171-V36119	CREB	171-V31336	p38 MAPK
171-V30438	ERK2	171-V35153	p53
171-V32238	ERK1/2	171-V33535	p90RSK

* Requires cell lysis kit and phosphoprotein detection reagent kit.

Catalog #	Description
Reagent Kits	
171-304004	Bio-Plex Phosphoprotein Detection Reagent Kit , 1 x 96-well, includes assay buffer, wash buffer, antibody diluent, resuspension buffer, streptavidin-PE, filter plate, sealing tape
171-304005	Bio-Plex Phosphoprotein Detection Reagent Kit , 10 x 96-well, includes assay buffer, wash buffer, antibody diluent, resuspension buffer, streptavidin-PE, filter plate, sealing tape

Sample Preparation Kits	
171-304011	Bio-Plex Cell Lysis Kit , 1 x 96-well, includes cell lysis and wash buffers, factor 1 and factor 2
171-304012	Bio-Plex Cell Lysis Kit , 10 x 96-well, includes cell lysis and wash buffers, factor 1 and factor 2

Note: Customized Bio-Plex assays can be ordered with any combination of available analytes. Request bulletin 5483 for multiplexing capabilities of specific assay combinations. For more information, see page 262, or go to www.bio-rad.com/bio-plex/assaybuilder/.

Bio-Plex Pro Disease Research Assays

Catalog #	Description	Pg 263
Bio-Plex Pro Human Cancer Biomarker Assays		

Human Premixed All-in-One Kit	
171-AC500M	Bio-Plex Pro Human Cancer Biomarker Panel 1 16-Plex , 1 x 96-well, includes coupled magnetic beads, detection antibodies, standard, 2-level controls, detection antibody diluent, standard diluent HB, sample diluent HB, assay buffer, wash buffer, streptavidin-PE, flat-bottom plate, sealing tape, and instructions for the detection of sEGFR, FGF-Basic, follistatin, G-CSF, HGF, sHER-2/neu, sIL-6R α , leptin, osteopontin, PECAM-1, PDGF-AB/BB, prolactin, SCF, sTIE-2, sVEGFR-1, and sVEGFR-2

Catalog #	Description	Catalog #	Description
Bio-Plex Pro Human Cancer Biomarker Panel 1 Singleplex Sets* , 1 x 96-Well			
171-BC501M	sEGFR Set	171-BC509M	Osteopontin Set
171-BC502M	FGF-basic Set	171-BC510M	PECAM-1 Set
171-BC503M	Follistatin Set	171-BC511M	PDGF-AB/BB
171-BC504M	G-CSF Set	171-BC512M	Prolactin Set
171-BC505M	HGF Set	171-BC513M	SCF Set
171-BC506M	sHER-2/neu Set	171-BC514M	sTIE-2 Set
171-BC507M	sIL-6Rα Set	171-BC515M	sVEGFR-1 Set
171-BC508M	Leptin Set	171-BC516M	sVEGFR-2 Set

* Requires reagent kit II and standards.

Catalog #	Description
Standards	
171-DC5000	Bio-Plex Pro Human Cancer Biomarker Panel 1 16-Plex Standards , pkg of 1 vial, lyophilized mixture of 16 standard antigens
171-DC5001	Bio-Plex Pro Human Cancer Biomarker Panel 1 16-Plex Standards , pkg of 50 lot-matched vials, lyophilized mixture of 16 standard antigens

Reagent Kits	
171-304055	Bio-Plex Pro Reagent Kit II with Filter Plate , 1 x 96-well, includes detection antibody diluent, standard diluent HB, sample diluent HB, assay buffer, wash buffer, streptavidin-PE, 96-well filter plate, sealing tape, and instructions for use with vacuum separation methods
171304055M	Bio-Plex Pro Reagent Kit II with Flat-Bottom Plate , 1 x 96-well, includes detection antibody diluent, standard diluent HB, sample diluent HB, assay buffer, wash buffer, streptavidin-PE, 96-well flat bottom plate, sealing tape, and instructions for use with magnetic separation methods

Catalog #	Description	Pg 264
Bio-Plex Pro Diabetes Assays		

Human Premixed All-in-One Kits	
171-A7001M	Bio-Plex Pro Human Diabetes 10-Plex Panel , 1 x 96-well, includes coupled magnetic beads, detection antibodies, standards, assay buffer, wash buffer, detection antibody diluent, streptavidin-PE, filter plate, sealing tape, standard diluent, sample diluent for the detection of C-peptide, ghrelin, GIP, GLP-1, glucagon, insulin, leptin, PAI-1, resistin, visfatin
171-A7002M	Bio-Plex Pro Human Diabetes Adipsin and Adiponectin Assays , 1 x 96-well, includes coupled magnetic beads, detection antibodies, standards, assay buffer, wash buffer, detection antibody diluent, streptavidin-PE, filter plate, sealing tape, serum-based diluent for the detection of adiponectin and adipsin
171-A7003M	Bio-Plex Pro Human Diabetes Adiponectin Assay , 1 x 96-well, includes coupled magnetic beads, detection antibodies, standards, assay buffer, wash buffer, detection antibody diluent, streptavidin-PE, filter plate, sealing tape, serum-based diluent for the detection of adiponectin
171-A7004M	Bio-Plex Pro Human Diabetes Adipsin Assay , 1 x 96-well, includes coupled magnetic beads, detection antibodies, standards, assay buffer, wash buffer, detection antibody diluent, streptavidin-PE, filter plate, sealing tape, serum-based diluent for the detection of adipsin

Catalog #	Description	Catalog #	Description
Bio-Plex Pro Human Diabetes Singleplex Sets* , 1 x 96-Well			
171-B7003M	C-Peptide Set	171-B7008M	Insulin Set
171-B7004M	Ghrelin Set	171-B7009M	Leptin Set
171-B7005M	GIP Set	171-B7010M	PAI-1 Set
171-B7006M	GLP-1 Set	171-B7011M	Resistin Set
171-B7007M	Glucagon Set	171-B7012M	Visfatin Set

* Requires reagent kit and standards.

Prices listed by catalog number on page 363.

Ordering Information

Multiplex Suspension Array System

www.bio-rad.com

Catalog #	Description
Standards	
171-D70001	Bio-Plex Pro Human Diabetes Standards , pkg of 1 vial, lyophilized mixture of 12 standard antigens, including adiponectin, adipsin, C-peptide, ghrelin, GIP, GLP-1, glucagon, insulin, leptin, PAI-1, resistin, and visfatin
171-D70050	Bio-Plex Pro Human Diabetes Standards , pkg of 50 lot-matched vials, lyophilized mixture of 12 standard antigens, including adiponectin, adipsin, C-peptide, ghrelin, GIP, GLP-1, glucagon, insulin, leptin, PAI-1, resistin, and visfatin

Mouse Premixed All-in-One Kits	
171-F7001M	Bio-Plex Pro Mouse Diabetes 8-Plex Panel , 1 x 96-well, includes coupled magnetic beads, detection antibodies, standards, assay buffer, wash buffer, detection antibody diluent, streptavidin-PE, filter plate, sealing tape, standard diluent, sample diluent for the detection of ghrelin, GIP, GLP-1, glucagon, insulin, leptin, PAI-1, resistin
171-F7002M	Bio-Plex Pro Mouse Diabetes Adiponectin Assay , 1 x 96-well, includes coupled magnetic beads, detection antibodies, standards, assay buffer, wash buffer, detection antibody diluent, streptavidin-PE, filter plate, sealing tape, serum-based diluent for the detection of adiponectin

Catalog #	Description	Catalog #	Description
Bio-Plex Pro Mouse Diabetes Singleplex Sets* , 1 x 96-Well			
171-G7002M	Ghrelin Set	171-G7006M	Insulin Set
171-G7003M	GIP Set	171-G7007M	Leptin Set
171-G7004M	GLP-1 Set	171-G7008M	PAI-1 Set
171-G7005M	Glucagon Set	171-G7009M	Resistin Set

Catalog #	Description
Standards	
171-I70001	Bio-Plex Pro Mouse Diabetes Standards , pkg of 1 vial, lyophilized mixture of 9 standard antigens, including adiponectin, ghrelin, GIP, GLP-1, glucagon, insulin, leptin, PAI-1, and resistin
171-I70050	Bio-Plex Pro Mouse Diabetes Standards , pkg of 50 lot-matched vials, lyophilized mixture of 9 standard antigens, including adiponectin, ghrelin, GIP, GLP-1, glucagon, insulin, leptin, PAI-1, and resistin

Catalog #	Description	Catalog #	Description
Bio-Plex Pro Rat Diabetes Singleplex Sets* , 1 x 96-Well			
171-L7001M	Ghrelin Set	171-L7006M	Leptin Set
171-L7001M	GLP-1 Set	171-L7007M	PAI-1 Set
171-L7004M	Glucagon Set		

Prices listed by catalog number on page 363.

* Singleplex sets include coupled beads and detection antibodies. Reagent kits and standards are required to run an assay. Due to the different dilution scheme, adiponectin is offered in an all-in-one format only.

Catalog #	Description
Standards	
171-NZ0001	Bio-Plex Pro Rat Standards , pkg of 1 vial, lyophilized mixture of 30 standard antigens. Compatible with rat cytokine and rat diabetes assays
171-NZ0501	Bio-Plex Pro Rat Standards , pkg of 50 lot-matched vials, lyophilized mixture of 30 standard antigens. Compatible with rat cytokine and rat diabetes assays

Reagent Kit*	
171-304070	Bio-Plex Pro Reagent Kit , 1 x 96-well, includes assay buffer, wash buffer, detection antibody diluent, streptavidin-PE, filter plate, sealing tape, standard diluent, sample diluent
171-304070M	Bio-Plex Pro Reagent Kit with Flat-Bottom Plate , 1 x 96-well, includes flat-bottom plate, assay buffer, wash buffer, detection antibody diluent, streptavidin-PE, sealing tape, standard diluent, sample diluent, and instructions
171-304071	Bio-Plex Pro Reagent Kit , 10 x 96-well, includes assay buffer, wash buffer, detection antibody diluent, streptavidin-PE, filter plates, sealing tape, standard diluent, sample diluent

* Same reagent kit can be used for both diabetes and cytokine assays.

Bio-Plex Pro Human Acute Phase Assay Panel Pg 264

Complete Kits*	
171-A4S07M	Bio-Plex Pro Human Acute Phase 5 + 4-Plex Panel Complete Kit , 1 x 96-well
171-A4C09M	Bio-Plex Pro Human Acute Phase 4-Plex Panel Complete Kit , 1 x 96-well
171-A4C07M	Bio-Plex Pro Human Acute Phase 5-Plex Panel Complete Kit , 1 x 96-well

Assay Kits**	
171-A4007M	Bio-Plex Pro Human Acute Phase 5-Plex Panel , 1 x 96-well, includes premixed coupled magnetic beads, detection antibodies, standards, and controls for the detection of ferritin, fibrinogen, procalcitonin, serum amyloid A, tissue plasminogen activator, requires acute phase reagent kit and acute phase diluent kit
171-A4008M	Bio-Plex Pro Human Acute Phase 5-Plex Panel , 10 x 96-well, requires acute phase reagent kit and 10 acute phase diluent kits
171-A4009M	Bio-Plex Pro Human Acute Phase 4-Plex Panel , 1 x 96-well, includes premixed coupled magnetic beads, detection antibodies, standards, and controls for the detection of α -2-macroglobulin, CRP, haptoglobin, serum amyloid P, requires acute phase reagent kit and acute phase diluent kit
171-A4010M	Bio-Plex Pro Human Acute Phase 4-Plex Panel , 10 x 96-well, requires acute phase reagent kit and 10 acute phase diluent kits

* For simplified ordering, the complete kits include the acute phase panel, acute phase reagent kit, and acute phase diluent kit.

** One acute phase reagent kit is required for use with each assay kit.

Catalog #	Description
Standards	
171-D40002	Bio-Plex Pro Human Acute Phase Standards , pkg of 2 vials, lyophilized mixture of 9 standard antigens
171-D40006	Bio-Plex Pro Human Acute Phase Standards , pkg of 50 lot-matched vials, lyophilized mixture of 9 standard antigens
Reagent Kit	
171-304050	Bio-Plex Pro Human Acute Phase Reagent Kit , 1 x 96-well, includes assay buffer, wash buffer, detection antibody diluent, streptavidin-PE, filter plate, sealing tape
Diluent Kit*	
171-305050	Bio-Plex Pro Human Acute Phase Diluent Kit , 1 x 96-well, includes 10 ml serum-based diluent and 300 ml serum-free diluent

* One acute phase diluent kit is sufficient to perform one 5-plex and one 4-plex assay.

Bio-Plex Pro Human Angiogenesis Assay Panel

Pg 263

Complete Kit*	
171-A4S11M	Bio-Plex Pro Human Angiogenesis 9-Plex Panel Complete Kit , 1 x 96-well
* For simplified ordering, the complete kit includes the angiogenesis panel, angiogenesis reagent kit, and human serum diluent kit.	
Assay Kit	
171-A4011M	Bio-Plex Pro Human Angiogenesis 9-Plex Panel , 1 x 96-well, includes premixed coupled magnetic beads, detection antibodies, standards, and controls for the detection of angiotensin-2, follistatin, G-CSF, HGF, IL-8, leptin, PDGF-BB, PECAM-1, and VEGF; requires angiogenesis reagent kit and human serum diluent kit
Reagent Kit	
171-304060	Bio-Plex Pro Angiogenesis Reagent Kit , 1 x 96-well
Diluent Kit	
171-305000	Bio-Plex Human Serum Diluent Kit , 1 x 96-well, includes 15 ml sample diluent, 10 ml standard diluent
Standards	
171-D40003	Bio-Plex Pro Human Angiogenesis Standards , pkg of 2 vials, lyophilized mixture of 9 standard antigens
171-D40004	Bio-Plex Pro Human Angiogenesis Standards , pkg of 50 lot-matched vials, lyophilized mixture of 9 standard antigens

Bio-Plex Pro Human Isotyping Assays

Pg 265

Complete Kit*	
171-A3S01M	Bio-Plex Pro Human Isotyping Panel Complete Kit , 1 x 96-well
* For simplified ordering, the complete kit includes the isotyping panel, isotyping reagent kit, and isotyping diluent kit.	
Assay Kit	
171-A3001M	Bio-Plex Pro Human Isotyping 7-Plex Panel , 1 x 96-well, includes premixed coupled magnetic beads, detection antibodies, standards, and controls for the detection of IgG ₁ , IgG ₂ , IgG ₃ , IgG ₄ , IgA, IgM, and IgE; requires isotyping reagent kit and isotyping diluent
Reagent Kit	
171-304020	Bio-Plex Pro Isotyping Reagent Kit , 1 x 96-well
Diluent Kit	
171-305030	Bio-Plex Pro Isotyping Diluent Kit , 1 x 96-well
Standards	
171-D30001	Bio-Plex Pro Human Isotyping Standards , pkg of 2 vials, lyophilized mixture of 7 standard antigens
171-D30501	Bio-Plex Pro Human Isotyping Standards , pkg of 50 lot-matched vials, lyophilized mixture of 7 standard antigens

Bio-Plex Precision Pro Human Cytokine Assay Panel

Pg 265

171-A1001P	Bio-Plex Precision Pro Human Cytokine 10-Plex Panel , 1 x 96-well, includes premixed coupled magnetic beads, detection antibodies, standards, controls, assay buffer, wash buffer, detection antibody diluent, streptavidin-PE, filter plate, sealing tape, serum standard diluent, plasma standard diluent, and sample diluent for the detection of IL-1 β , IL-2, IL-4, IL-5, IL-6, IL-10, IL-12 (p70), IL-13, IFN- γ , TNF- α
------------	---

Prices listed by catalog number on page 363.

Bio-Plex Assay Tools

Catalog # Description

Bio-Plex Assay Standards Pg 265

Bio-Plex Human Cytokine Standards

171-D50001	Bio-Plex Human Cytokine Standards Group I , pkg of 1 vial, lyophilized mixture of 27 standard antigens
171-D10501	Bio-Plex Human Cytokine Standards Group I , pkg of 50 vials, lyophilized mixture of 27 standard antigens
171-D60001	Bio-Plex Human Cytokine Standards Group II , pkg of 1 vial, lyophilized mixture of 23 standard antigens
171-D10502	Bio-Plex Human Cytokine Standards Group II , pkg of 50 vials, lyophilized mixture of 23 standard antigens
171-X40001	Bio-Plex Pro TGF-β Standard , pkg of 1 TGF- β standard for detecting TGF- β 1, TGF- β 2, and TGF- β 3 analytes
171-X40501	Bio-Plex Pro TGF-β Standard , pkg of 50 lot-matched vial, TGF- β standard for detecting TGF- β 1, TGF- β 2, and TGF- β 3 analytes

Bio-Plex Mouse Cytokine Standards

171-D50001	Bio-Plex Mouse Cytokine Standards Group I , pkg of 1 vial, lyophilized mixture of 23 standard antigens
171-I10501	Bio-Plex Mouse Cytokine Standards Group I , pkg of 50 vials, lyophilized mixture of 23 standard antigens
171-I60001	Bio-Plex Mouse Cytokine Standards Group II , pkg of 1 vial, lyophilized mixture of 9 standard antigens
171-I10502	Bio-Plex Mouse Cytokine Standards Group II , pkg of 50 vials, lyophilized mixture of 9 standard antigens

Bio-Plex Pro Rat Cytokine Standards

171-NZ0001	Bio-Plex Pro Rat Cytokine Standards , 1 pack of 30 analytes, compatible with rat cytokine and rat diabetes assays
171-NZ0501	Bio-Plex Pro Rat Cytokine Standards , 50-pack of 30 analytes, standard for detecting 30 rat targets. Compatible with rat cytokine and rat diabetes assays

Bio-Plex Human Cancer, Acute Phase, Angiogenesis, Diabetes, and Isotyping Standards

171-DC5000	Bio-Plex Pro Human Cancer Biomarker Panel 1 16-Plex Standards , pkg of 1 vial, lyophilized mixture of 16 standard antigens
171-DC5001	Bio-Plex Pro Human Cancer Biomarker Panel 1 16-Plex Standards , pkg of 50 lot-matched vials, lyophilized mixture of 16 standard antigens
171-D40002	Bio-Plex Human Acute Phase Standards , pkg of 2 vials, lyophilized mixture of 9 standard antigens
171-D40006	Bio-Plex Human Acute Phase Standards , pkg of 50 vials, lyophilized mixture of 9 standard antigens
171-D40003	Bio-Plex Human Angiogenesis Standards , pkg of 2 vials, lyophilized mixture of 9 standard antigens
171-D40004	Bio-Plex Human Angiogenesis Standards , pkg of 50 vials, lyophilized mixture of 9 standard antigens
171-D40001	Bio-Plex Human Diabetes Standards , pkg of 2 vials, lyophilized mixture of 14 standard antigens
171-D40005	Bio-Plex Human Diabetes Standards , pkg of 50 vials, lyophilized mixture of 14 standard antigens
171-D30001	Bio-Plex Human Isotyping Standards , pkg of 2 vials, lyophilized mixture of 7 standard antigens
171-D30501	Bio-Plex Human Isotyping Standards , pkg of 50 vials, lyophilized mixture of 7 standard antigens

Bio-Plex Pro COOH Magnetic Beads Pg 266

MC100xx-01*	Bio-Plex Pro Magnetic COOH Beads , 1 ml
MC100xx-04*	Bio-Plex Pro Magnetic COOH Beads , 4 ml

* xx = bead region. Bead regions available, 26–29, 34–37, 43–46, 52–55, 62–65.

Bio-Plex COOH Beads Pg 266

171-5060xx*	Bio-Plex COOH Beads , 1.25 x 10 ⁷ beads/ml, 1 ml
171-6060xx*	Bio-Plex COOH Beads , 16 ml

* xx = bead region. Bead regions available, 11, 16, 18, 20, 24–28, 30, 31, 33, 35, 38, 42–46, 50–53, 56, 66

Bio-Plex Amine Coupling Kit Pg 266

171-406001*	Bio-Plex Amine Coupling Kit , 30 reactions, includes bead wash buffer, bead activation buffer, storage buffer, staining buffer, coupling reaction tubes
-------------	--

* For protein coupling only.

Bio-Plex Streptavidin-PE*

171-304501	Bio-Plex Streptavidin-PE , streptavidin-phycoerythrin for 10 x 96-well reactions
------------	---

* Streptavidin-PE is a component of all reagent kits and is available separately.

Prices listed by catalog number on page 363.