

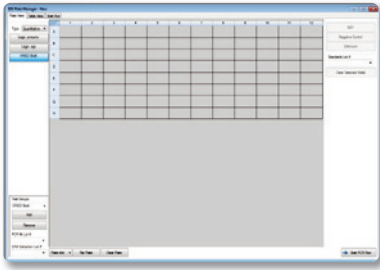


Quick Guide

CFX Manager™ Software

Industrial Diagnostic Edition

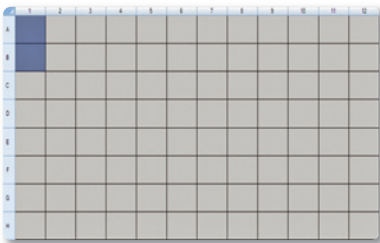
359-3893 • For VINEO™ *Brettanomyces* PCR Tests



- Open the software to get the **Plate Manager** window or select **View > Plate Manager** in the menu bar



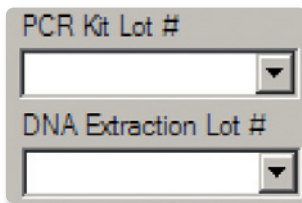
- Select the test type **Quantitative** from the drop-down menu
- Select the test you wish to perform from the list of tests on the left side of the screen



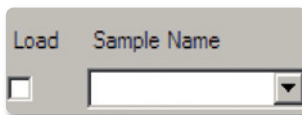
- Select two wells for that assay
- Apply the sample type **QS1** to that selection
- Select one well
- Apply the sample type **Negative Control** to that selection



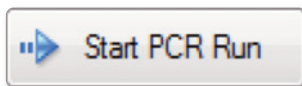
- Select the wells for your samples
- Apply the sample type **Unknown** to that selection



- Type or select **Lot Numbers** (for DNA Extraction Kit, PCR Kits and/or Standards)



- Type or select sample names: select a well to start
- Enter this well's name in the box **Sample Name** on the right
- Hit the **Enter key**
The cursor will move to the next well (going down by default)



- Click **Start PCR Run**

Please read the kit instruction manual and instrument user guide for complete and detailed instructions.





Example of report: VINEO™ *Brettanomyces* PCR Kit

2.0.746.0305. APF v1

Current date: 11/10/2010 17:46

User: BioRad\admin
 Base Serial Number: CC003234
 Optical Head Serial Number: 785BR2011
 PCR data file name: C:\Documents and Settings\VINEO Brett.pcrd
 PCR data file created: 09/12/2009 16:33
 PCR Kit lot number:
 DNA Extraction Lot Number:

Analysis Mode: Baseline Subtracted Curve Fit
 Baseline Calculation: Target: set automatically -- Internal control: set automatically
 Cq Determination: Single Threshold
 Threshold: Target: 512.85 (set automatically) -- Internal control: 239.128 (set automatically)
 Report Differs from Last Save: No
 Report Components Show Options: Cqs(Yes), Plate Table View(Yes), Charts(Yes)
 PCR Plate Barcode: N/A
 Processed through the iQ-Check Prep System: No

	1	2	3	4	5	6	7	8	9	10	11	12	
A	Neg Ctrl Valid control	vin neg 1 Negative											A
B	QS1 Valid control	vin pos 1 Positive											B
C	QS1 Valid control	vin neg 2 Negative											C
D		vin pos 2 Positive											D
E													E
F													F
G													G
H													H

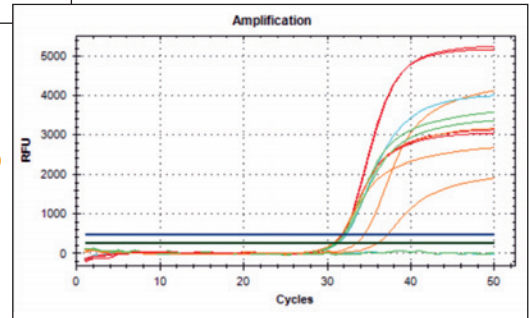
Negative Control	
Criteria	Calculated Cq
Target: Cq = N/A	N/A
Internal control: 25 ≤ Cq ≤ 40	31.33
Valid	

Sample Interpretation		
Target	Internal control	Interpretation
Cq ≥ 10		Positive
Cq = N/A	Cq ≥ 25	Negative
Cq = N/A	Cq = N/A	Inhibition

Standard	
Criteria	Calculated Cq
Target: 20 ≤ Cq ≤ 40	31.85 31.81
Internal control	30.96 31.05
Valid	

Z	V (ml)	Dil. Factor
24	1.8	1

Well	Sample Id	Cq Target	Cq Internal Control	Result	UFC/ml	Interpretation
A01	Neg Ctrl	N/A	31.33	Valid control	N/A	
B01	QS1	31.85	30.96	Valid control	N/A	
C01	QS1	31.81	31.05	Valid control	N/A	
A02	vin neg 1	N/A	31.21	Negative	0.00E+00	Negative
B02	vin pos 1	37.21	30.73	Positive	9.84E+01	Low population, controlled risk
C02	vin neg 2	N/A	31.05	Negative	0.00E+00	Negative
D02	vin pos 2	34.39	30.69	Positive	7.09E+02	Critical population to be monitored



- 1 - PCR run details
- 2 - Plate setup diagram with sample names
- 3 - Validation criteria for controls and samples
- 4 - Results summary
- 5 - Amplification curves



Bio-Rad
Laboratories, Inc.

Life Science
Group

Web site www.bio-rad.com USA 800 424 6723 Australia 61 2 9914 2800 Austria 01 877 89 01 Belgium 09 385 55 11 Brazil 55 31 3689 6600
 Canada 905 364 3435 China 86 21 6169 8500 Czech Republic 420 241 430 532 Denmark 44 52 10 00 Finland 09 804 22 00
 France 01 47 95 69 65 Germany 089 31 884 0 Greece 30 210 777 4396 Hong Kong 852 2789 3300 Hungary 36 1 459 6100 India 91 124 4029300
 Israel 03 963 6050 Italy 39 02 216091 Japan 03 6361 7000 Korea 82 2 3473 4460 Malaysia 60 3 2117 5260 Mexico 52 555 488 7670
 The Netherlands 0318 540666 New Zealand 64 9 415 2280 Norway 23 38 41 30 Poland 48 22 331 99 99 Portugal 351 21 472 7700
 Russia 7 495 721 14 04 Singapore 65 6415 3170 South Africa 27 861 246 723 Spain 34 91 590 5200 Sweden 08 555 12700
 Switzerland 061 717 95 55 Taiwan 886 2 2578 7189 Thailand 66 2 6518311 United Kingdom 020 8328 2000