



RAPID'Chromogenic Media

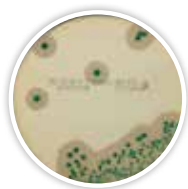
Culture media for the detection and enumeration
of food and environmental pathogens and quality indicators

BIO-RAD

RAPID'Chromogenic Media Technology and Applications

RAPID'Chromogenic Media are a complete range of highly selective chromogenic media designed to detect and enumerate a variety of microorganisms in food and environmental samples. They offer economical, labor-saving protocols and provide a shorter time to results than classical methods. In addition, the combination of the selected chromogenic mixture and high-quality raw material allows a high level of contrast, high selectivity, and high sensitivity, making the plates easy to read.

AL (Agar *Listeria* according to Ottaviani and Agosti)



Applications

- Detection of *L. monocytogenes* and *Listeria* spp.
- Enumeration of *L. monocytogenes*
- Approved for ISO 11290-1 and 11290-2 protocols
- Recommended in FDA BAM Chapter 10
- Approved for MFLP-74 protocol



L. monocytogenes



Listeria spp.



Non-*Listeria*

Enzymatic Activity	<i>L. monocytogenes</i>	<i>Listeria</i> spp.	Non- <i>Listeria</i>
PI-PLC detection	+	-	-
β-D-Glucosidase	+	+	-

RAPID'Campylobacter



Applications

- Detection of *Campylobacter* spp.
- Enumeration of *Campylobacter* spp.
- Approved as second media in ISO/TS 10272-1 protocol
- Inhibition of competing organisms



Thermophilic *Campylobacter* spp.

Enzymatic Activity	Thermophilic <i>Campylobacter</i> spp.
Chromogenic substrate	+

RAPID'E.coli 2



Applications

- Enumeration of *E. coli*
- Enumeration of other coliforms
- Differentiation by color, not gas formation
- Can be incorporated into a hygiene monitoring program



E. coli



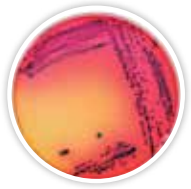
Other coliforms



Non-coliforms

Enzymatic Activity	<i>E. coli</i>	Other coliforms	Non-coliforms
Glucuronidase	+	-	-
Galactosidase	+	+	-

RAPID'E.coli O157:H7



Applications

- Detection of *E. coli* O157:H7
- Approved as second media in ISO 16654 protocol
- Confirmation of iQ-Check® *E. coli* O157:H7 real-time PCR results
- Detection of rare sorbitol-positive strains



E. coli O157:H7



Other *E. coli*



Other bacteria

Enzymatic Activity	<i>E. coli</i> O157:H7	Other <i>E. coli</i>	Other bacteria
Glucuronidase	-	+	-
Galactosidase	+	+	-
Sorbitol	-	+	+/-

RAPID'Enterobacteriaceae



Applications

- Enumeration of Enterobacteriaceae
- Differentiation of colonies by size
- Surface inoculation or pour plate method
- Can be incorporated into a hygiene monitoring program



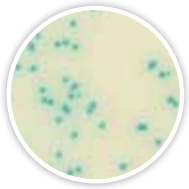
Enterobacteriaceae



Non-Enterobacteriaceae

Enzymatic Activity	Enterobacteriaceae	Non-Enterobacteriaceae
Glucose fermentation	+	-

RAPID[®] *Listeria* spp.



Applications

- Detection of *Listeria* spp.
- Confirmation of iQ-Check *Listeria* spp. real-time PCR results
- Can be part of an environmental monitoring program

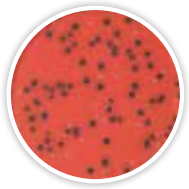


Listeria spp.

Enzymatic Activity

β-D-Glucosidase +

RAPID[®] *L.mono*



Applications

- Enumeration of *L. monocytogenes*
- Detection of *L. monocytogenes* and *Listeria* spp.
- Approved as second media in ISO 11290-1 protocol
- Recommended in FDA BAM Chapter 10
- Approved for MFHPB-30 and MFLP-74 protocols
- Confirmation of iQ-Check *Listeria monocytogenes* II real-time PCR results



L. monocytogenes



L. ivanovii



L. innocua

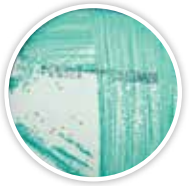


L. welshimeri

Enzymatic Activity

	<i>L. monocytogenes</i>	<i>L. ivanovii</i>	<i>L. innocua</i>	<i>L. welshimeri</i>
PI-PLC detection	+	+	-	-
Xylose fermentation	-	+	-	+

RAPID[®] *Sakazakii*



Applications

- Detection of *Cronobacter* spp.
- Approved for ISO/TS 22964:2006 protocol
- Confirmation of iQ-Check *Cronobacter* spp. real-time PCR results



Cronobacter spp.

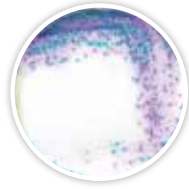


Other Enterobacteriaceae

Enzymatic Activity

α-D-Glucosidase + -

RAPID[®] *Salmonella*



Applications

- Detection of *Salmonella* spp.
- Single 24 hr enrichment protocol without subculturing
- Approved as second media in ISO 6579 protocol
- Confirmation of iQ-Check *Salmonella* II real-time PCR results



Salmonella spp.



Other Enterobacteriaceae



Proteus spp.

Enzymatic Activity

	<i>Salmonella</i> spp.	Other Enterobacteriaceae	<i>Proteus</i> spp.
C8 esterase	+	+	-
β-D-Glucosidase	-	+	-

RAPID[®] *Staph*



Applications

- Enumeration of coagulase-positive Staphylococci
- Final result in 24 hr



Staphylococcus coagulase-positive



Staphylococcus coagulase-negative

Enzymatic Activity

	<i>Staphylococcus</i> coagulase-positive	<i>Staphylococcus</i> coagulase-negative
Potassium tellurite reduction	+	+
Egg yolk proteolysis	+	-

Validations

Chromogenic Media	NF Validation by AFNOR Certification	AOAC	NordVal	Chromogenic Media	NF Validation by AFNOR Certification	AOAC	NordVal
AL	•			RAPID [®] <i>Listeria</i> spp.	•	•	
RAPID [®] <i>Campylobacter</i>	•			RAPID [®] <i>L.mono</i>	•	•	•
RAPID [®] <i>E.coli</i> 2	•	•	•	RAPID [®] <i>Sakazakii</i>	•		
RAPID [®] <i>E.coli</i> O157:H7	•	•		RAPID [®] <i>Salmonella</i>	•	•	•
RAPID [®] <i>Enterobacteriaceae</i>	•			RAPID [®] <i>Staph</i>	•	•	



“Microbiology laboratories face many challenges. By offering alternative food-testing methods with high added value, we help laboratories improve efficiency every day.”

YANNICK BICHOT
International Product Manager
Food Science Division
10 years at Bio-Rad

Ordering Information

Catalog # Description

Buffered Peptone Water Broth

3554179 **Ready to use**, 225 ml x 6 bottles
3555795 **Ready to use**, 3 L x 4 bags
3555790 **Ready to use**, 5 L x 2 bags
3564684 **Dehydrated base**, 500 g

Fraser 1/2 Broth

3564604 **Dehydrated base**, 500 g
3564616 **Supplement 1**, 1 box, 10 vials
3555797 **Complete medium**, 225 ml x 6 bottles
3555794 **Complete medium**, 3 L x 4 bags

AL

3563965 **Ready to use**, 90 mm x 120 plates
3563695 **Ready to use**, 90 mm x 20 plates
3564043 **Dehydrated base**, 500 g
3555200 **Base medium**, 6 x quantity for 250 ml
3564041 **Supplement 1**, 1 box, 10 vials
3564201 **Supplement 1**, 100 capsules
3564042 **Supplement 2**, 1 box, 10 vials

RAPID'*Campylobacter*

3564295 **Dehydrated base**, 500 g
3564296 **Supplement 1**, 1 box, 10 vials
3564297 **Campylobacter Confirm Latex Kit**, 50 tests (confirmation)

RAPID'*E.coli* 2

3555299 **Ready to use**, 100 ml x 6 bottles
3555297 **Ready to use**, 200 ml x 6 bottles
3564024 **Dehydrated base**, 500 g

RAPID'*E.coli* O157:H7

3564748 **Dehydrated base**, 100 g
3564610 **Novobiocin Supplement**, 1 g bottle

RAPID'*Enterobacteriaceae*

3554012 **Ready to use**, 200 ml x 6 bottles
3564004 **Dehydrated base**, 500 g

Catalog # Description

RAPID'*Listeria* spp.

3564744 **Dehydrated base**, 500 g
3564745 **Supplement 1**, 1 box, 10 vials
3564746 **Supplement 2**, 1 box, 10 vials

RAPID'*L.mono*

3563964 **Ready to use**, 90 mm x 120 plates
3563694 **Ready to use**, 90 mm x 20 plates
3555294 **Ready to use**, 190 ml + supplement
3564293 **Dehydrated base**, 500 g
3564294 **Supplement 1**, 1 box, 10 vials
3564746 **Supplement 2**, 1 box, 10 vials
3553669 **Rhamnose Test**, 1 ml x 28 tubes

RAPID'*Sakazakii*

3563971 **Ready to use**, 90 mm x 20 plates
3564976 **Dehydrated base**, 500 g

RAPID'*Salmonella*

3563961 **Ready to use**, 90 mm x 20 plates
3563963 **Ready to use**, 90 mm x 120 plates
3564705 **Dehydrated base**, 500 g
3564709 **Enrichment supplement capsules**, 10x, 100 capsules
3564710 **Enrichment supplement capsules**, 100 capsules
3564712 **Enrichment supplement**, 100 analyses
3553834 **Oxidase Test**, 2 x 50 disks (confirmation)
3553822 **ONPG Test**, 50 disks (confirmation)
3556710 **Salmonella Latex Kit**, 75 tests (confirmation)
3556711 **Salmonella Confirm Latex Kit**, 50 tests (confirmation)

RAPID'*Staph*

3563960 **Ready to use**, 90 mm x 20 plates
3564704 **Dehydrated base**, 500 g

For more information and to see how our products can be incorporated into food testing workflows, visit our website:

RAPID'Chromogenic Media — bio-rad.com/rapidmedia
iQ-Check Real-Time PCR Kits — bio-rad.com/iqcheck



Bio-Rad
Laboratories, Inc.

Life Science
Group

Web site www.bio-rad.com **USA** 800 424 6723 **Australia** 61 2 9914 2800 **Austria** 43 1 877 89 01 **Belgium** 03 710 53 00 **Brazil** 55 11 3065 7550
Canada 905 364 3435 **China** 86 21 6169 8500 **Czech Republic** 420 241 430 532 **Denmark** 44 52 10 00 **Finland** 09 804 22 00
France 01 47 95 69 65 **Germany** 49 89 31 884 0 **Greece** 30 210 9532 220 **Hong Kong** 852 2789 3300 **Hungary** 36 1 459 6100 **India** 91 124 4029300
Israel 03 963 6050 **Italy** 39 02 216091 **Japan** 81 3 6361 7000 **Korea** 82 2 3473 4460 **Mexico** 52 555 488 7670 **The Netherlands** 0318 540666
New Zealand 64 9 415 2280 **Norway** 23 38 41 30 **Poland** 48 22 331 99 99 **Portugal** 351 21 472 7700 **Russia** 7 495 721 14 04
Singapore 65 6415 3188 **South Africa** 27 (0) 861 246 723 **Spain** 34 91 590 5200 **Sweden** 08 555 12700 **Switzerland** 026674 55 05
Taiwan 886 2 2578 7189 **Thailand** 1800 88 22 88 **United Kingdom** 020 8328 2000