

BioPlex™ 2200 MMRV IgG

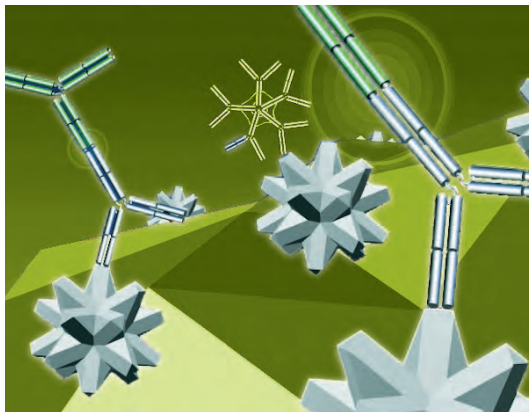
The first and only fully-automated, multiplexed solution for Measles, Mumps, Rubella and Varicella-zoster virus antibody testing





Efficiency

- Multiplex your workflow—offering four test results simultaneously
- Multiplex your inventory—dramatically reducing reagent and calibrator storage requirements
- Multiplex your samples—significantly reducing your sample volume requirements
- Multiplex your tubes—accommodating serum, heparinized plasma and EDTA to reduce laboratory costs



Throughput

- Market-leading throughput with up to 400 multiplexed test results per hour to meet heavy workload demands
- Random access processing ensures results are available when you need them
- Time to first result of 45 minutes maximizes speed and flexibility in result reporting



Confidence

- Market-leading precision with within-run and between-run %CV less than 10%
- Full automation from primary tube to final result, minimizing the chance of human error
- Internal Quality Control beads included with each sample to verify serum addition, standardize detector performance and detect non-specific sample binding
- One system with an expanding menu to meet your autoimmune and serology testing needs



Like No Other

The BioPlex™ 2200 MMRV IgG kit provides a fast, accurate and efficient method to determine serological status for Measles, Mumps, Rubella and Varicella-zoster virus simultaneously.

BioPlex™ 2200 MMRV IgG is a qualitative kit for the detection of IgG antibodies to:

- Measles (Rubeola)
- Mumps
- Rubella (German Measles)
- Varicella-zoster virus

Concordance with EIA Method

The test ordered population included samples for pre-employment evaluation. Clinical studies demonstrate excellent relative sensitivity for the BioPlex™ 2200 MMRV IgG kit.

Population	Pregnant Women (N=396)	Test ordered (N=1183)
Measles IgG Positive % Agreement	93.3% (362/388)	94.7% (1042/1100)
Mumps IgG Positive % Agreement	94.3% (349/370)	90.4% (1006/1113)
Rubella IgG Positive % Agreement	97.9% (369/377)	94.8% (1060/1118)
VZV IgG Positive % Agreement	95.1% (348/366)	94.0% (1047/1114)

Retrospective Negative Samples for Measles, Mumps, Rubella and Varicella-zoster virus

Performance of the MMRV IgG kit was evaluated against corresponding commercially available Measles, Mumps, Rubella and VZV microplate EIAs using retrospective serum samples negative for antibodies to Measles, Mumps, Rubella and VZV.

Assay	Negative % Agreement
Measles IgG (N = 93)	100% (93/93)
Mumps IgG (N = 96)	100% (83/83)
Rubella IgG (N = 268)	95.9% (257/268)
VZV IgG (N = 143)	100% (143/143)

Correlation with CDC Rubella Evaluation Panel

The Centers for Disease Control (CDC) provided an evaluation serum panel for Rubella IgG. This panel was tested to evaluate the performance of the Rubella IgG kit and does not imply an endorsement of the BioPlex™ 2200 MMRV IgG kit by the CDC.

CDC Samples	Reference Results	BioPlex™ 2200 Pos (+)	BioPlex™ 2200 Neg (-)
Rubella IgG	Pos (+)	81	1*
Rubella IgG	Neg (-)	0	18

* Panel consisted of 100 specimens (50 pairs). There are 9 negative sera, resulting in 18 negative samples and 41 positive sera resulting in 82 positive samples. The discrepant sample was near the cutoff.

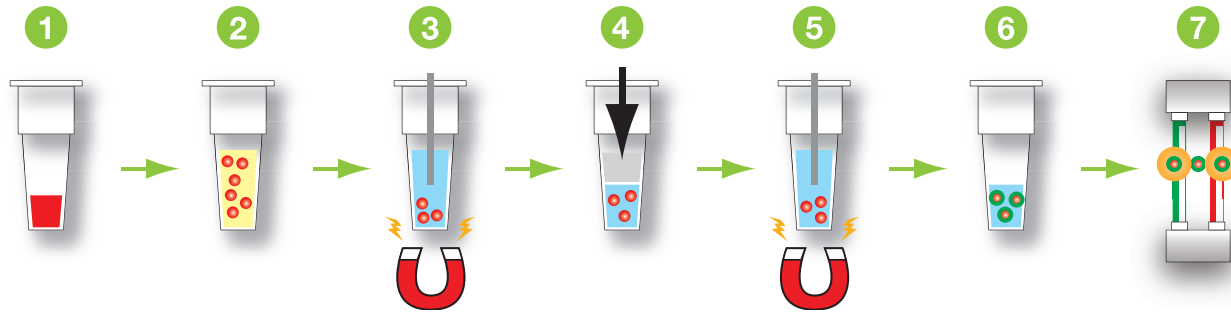
Overall Percent Agreement = 99%

Precision

Precision was assessed using serum, EDTA plasma and heparinized plasma samples according to the CLSI EP5-A2 guideline "Evaluation of Precision Performance of Clinical Chemistry Devices." In this study, 40 runs were performed on one BioPlex™ 2200 over 20 working days (N = 80) using a reproducibility panel of patient samples.

	Within-Run % CV	Between-Run % CV	Total Precision % CV
Measles IgG	3.2 – 10.1	0.0 – 6.3	3.2 – 10.3
Mumps IgG	1.9 – 6.4	0.0 – 3.9	1.8 – 7.5
Rubella IgG	2.9 – 7.2	0.0 – 4.5	3.9 – 7.6
VZV IgG	2.1 – 6.8	0.0 – 4.2	2.7 – 8.4

BioPlex™ 2200 MMRV IgG



- 1. Patient sample (5 µL) automatically added to reaction vessel
- 2. Sample diluent and beads (dilution 1:80) added and incubated at 37°C
- 3. Wash step
- 4. Conjugate added and incubated at 37°C
- 5. Wash step
- 6. Bead resuspended in wash buffer
- 7. Flow-based, dual laser detection



MMRV IgG Reagent Pack
The MMRV IgG Reagent Pack contains all the necessary reagents (sample diluent, beads and conjugate) to process 100 samples per pack.



MMRV IgG Calibrator Set
The tri-level MMRV IgG kit calibrators are multiplexed and ready-to-use offering 30 day calibration stability.



MMRV IgG Control Set
The bi-level positive and negative MMRV IgG controls are multiplexed and ready-to-use.

Ordering Information

Catalog No.	Description	
665-2450	BioPlex™ 2200 MMRV IgG Reagent Pack.....	1 pack
663-2400	BioPlex™ 2200 MMRV IgG Calibrator Set.....	1 set
663-2420	BioPlex™ 2200 MMRV Calibrator Set CD	1 CD
663-2430	BioPlex™ 2200 MMRV IgG Control Set.....	1 set
663-2440	BioPlex™ 2200 MMRV Control Set CD	1 CD



**Bio-Rad
Laboratories**

For further information, please contact the Bio-Rad office nearest you or visit our website at www.bio-rad.com/diagnostics

*Clinical
Diagnostics Group*

Website www.bio-rad.com/diagnostics U.S. 1-800-2BIO-RAD Australia 61-2-9914-2800 Austria 43-1-877-8901 Belgium 32-9-385-5511 Brazil 5521-3237-9400 Canada 1-514-334-4372 China 86-21-64260808 Czech Republic 420-241-430-532 Denmark +45-4452-1000 Finland 358-9-804-22-00 France 33-1-47-95-60-00 Germany +49-(0)89-318-840 Greece 30-210-7774396 Hong Kong 852-2789-3300 Hungary +36-1-459-6100 India 1-800-180-1224 Israel 972-3-9636050 Italy +39-02-216091 Japan 81-3-6361-7070 Korea 82-2-3473-4460 Mexico +52 (55) 5488-7670 The Netherlands +31-318-540666 New Zealand 64-9-415-2280 Norway 47-23-38-41-30 Poland 48-22-3319999 Portugal 351-21-472-7700 Russia 7-495-721-14-04 Singapore 65-6415-3188 South Africa 27-11-442-85-08 Spain 34-91-590-5200 Sweden 46-8-555-127-00 Switzerland 41-61-717-95-55 Thailand 662-651-8311 United Kingdom +44-(0)20-8328-2000