




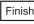
PR3100 TSC Quick Reference Guide

Refer to the PR3100 TSC User Manual and PR3100 TSC Microplate Assay Testing Reference Manual (MATRM) for more detailed instructions.


1 Daily Startup (Power on)



- a. Power on Reader with switch on the rear right.
(Stand clear minimum of 8 inches before powering on reader).
- b. Log in using User Name and Password. Touch [OK].
- c. Allow one minute to load assay files from the APF USB stick.

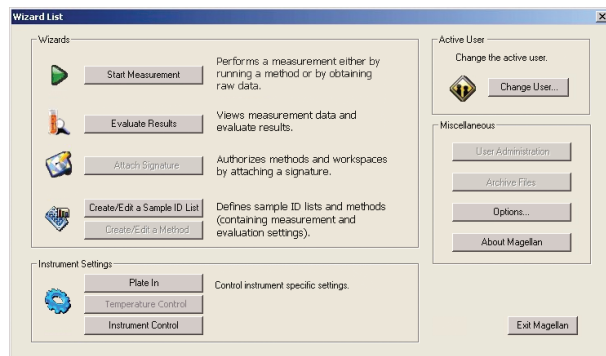
2 Read "Preprogrammed Assay Plate"

- a. Touch [Start Measurement] box.
- b. Touch radial button for User Predefined Method or Start Favorite.
- c. Select Assay File Name and touch .
- d. Enter Workspace Name incorporating Date, Lot #, and Kit Exp. Date. (Example: 071207, BB725, 122607).
- e. If Quantitative or Semi-quantitative Assay requires change in standard value, touch [Modify Layout] box.
- f. Place plate in the plate support tray.
- g. Touch .
- h. If assay requires any other input such as Min/Max control value or verification of valid BR Anti-HBs (0-400), an [Edit Prompt] box will appear. Otherwise, the PR3100 TSC will start shaking the plate for 20 seconds outside the reader before taking in the plate to read.
- i. Result will print automatically if the plate meets all the validation criteria.
- j. Verify that all validations have passed.
- k. Verify patient results are within defined specifications.
- l. If any validation is not met, the result report can be printed without the Interpretation.
 - Touch [Yes] button when the QC Validation Criteria Failed box appears with failed validation criteria asking to proceed or to stop evaluation.
 - Result will print automatically.

3 Read "Raw Absorbance of Plate"

- a. Touch [Start Measurement] box.
- b. Touch radial button for Obtain Raw Data and Touch .

- c. Touch [Measurement Parameters] to access the [Meas Params] folder.
 - d. Select single or dual wavelength(s) for reading by selecting the wavelength(s) to be read.
 - e. Touch [Shaking] box to input shake options.
 - f. Touch [OK] and .
 - g. At Start Measurement Screen, enter Workspace Name.
 - h. Place plate in the plate support tray.
 - i. Touch [Finish] box.
 - j. Result can be viewed by touching [View Data] box on or printing by touching [Print] box.
 - k. Touch  to save the ".wsp" file. Remarks can be entered in Remarks box.
 - l. Touch [Finish] to get back to Wizard List screen.
- ## 4 Daily Shutdown (Do not leave plate in Reader)
- a. Take plate off the Plate Support.
 - b. Inspect reader for any spills and clean as needed.
 - c. Touch [Exit Magellan] box.
 - d. When the Pop-up message "It is now ok to turn off Instrument" comes up, Power down Reader with switch on the rear right.



PR3100 TSC Quick Reference Guide

QC Pac2 – Reader Verification

1. Installing the QC Pac2 USB stick

- a. Power down Reader with switch on the rear right.
- b. Take the APF USB stick out from the back of the Touch screen compartment. There is a sliding door to the rear right of the Touch screen.
- c. Insert the QC Pac2 USB stick into the back of the Touch screen into the USB port compartment. (Make sure the small light hole on the USB stick is facing down).
- d. Power on Reader with switch on the rear right. (Stand clear minimum of eight inches before powering on reader).

2. Running the QC Pac2

- a. Touch [Q2] box on the top toolbar.
- b. Follow instructions on screen. Touch [X].
- c. Enter User Name.
- d. Enter QC Plate #.
 - Enter #, first time the plate is used.
 - Touch [▼] to show previous Plate # to be selected.
- e. Place the Verification Plate on the plate support with marking A1 on the plate in the top left corner.
- f. Touch [X]. Reader will start reading the plate.
- g. When the plate comes out and stays out, turn the plate 180° with marking A1 at the bottom right corner.
- h. Touch [X]. Reader will start reading the plate.
- i. When the plate comes out and stays out for the second time, **take the plate off** the plate support and place it back into the plastic bag before putting back into the case.
- j. Touch [Move...] box to access plate movement.
- k. Retract Plate Support by touching [In].
- l. Touch [Finish] to go to save result option (default filename contains the Date in the filename).
- m. Touch [OK] and Save.
- n. Review screen for any number other than "0" next to FAIL. "0" means all passed.
- o. Touch [Print] to print the complete report. (Select the printer driver. Default is PCL Compatible Printer (Color)).
- p. Touch [OK] to print complete report.
- q. Touch [File] on Toolbar followed with Exit.
- r. Power down Reader with switch on the rear right.
- s. Take out the QC Pac2 USB stick and replace with the APF USB stick.
- t. Ready for Daily Startup.

Software Navigation for Magellan Operators

Wizard List Screen

Start Measurement

- Obtain Raw Data
 - ♦ Measurement Parameters box (Required to be entered)
 - General Tab:
 - (1) General Information
 - Measurement Parameters:
 - (1) Measurement and Reference wavelength options
 - (2) Read Mode options (Normal, Accuracy or Center)
 - Shaking:
 - (1) Shaking options
- Use Predefined Method
 - ♦ All predefined methods
 - Enter Modify Layout for Quant and Semi-Quant assays (in Start Measurement screen)
- Start Favorite
 - ♦ 15 Selected methods
 - Enter Modify Layout for Quant and Semi-Quant assays (in Start Measurement screen)

Evaluate Results

- Select a file
 - ♦ View Data
 - ♦ Print (Reprint)

Create/Edit a Sample-ID List

(Not applicable to Bio-Rad Assays)

Plate In/Out

- Moves plate In or Out

Instrument Control

- Movements (Plate and Filter)
 - ♦ Moves plate In or Out
 - ♦ Moves Absorbance Filter slide In or Out

- PC Remote
(Not applicable to Bio-Rad Configuration)

Change User

- Allows to change User without rebooting PR3100 TSC

Options

- Touchscreen
 - ♦ Date, Time, Contrast and Keyboard (choice of regular or large keyboard)
- Printer
 - ♦ Printer driver selection
 - ♦ Font size
 - ♦ USB Port selection
 - ♦ Letter Paper Size selection
 - ♦ Portrait Orientation selection
- Plate View
(Not applicable to Bio-Rad Assays)
- Miscellaneous
 - ♦ Wizard screen options
 - ♦ Startup screen options
 - ♦ Audit Trail
 - ♦ Change password...
 - ♦ Language
(Do Not Change. Conflicts with Preprogrammed Bio-Rad Assays)
 - ♦ Add HUID
(Do Not Change. Conflicts with Preprogrammed Bio-Rad Assays)

About Magellan

- Information on this Instrument Software

Exit Magellan

- Allows to power down